

Converting Colors

Yxy(57.0871, 0.3401, 0.3294)

Have a look what the booklet for
Yxy(57.0871, 0.3401, 0.3294)
contains.

Yxy(56.8705, 0.3401, 0.3291)	3
<i>Conversions</i>	4
<i>Details</i>	6
<i>Harmonies</i>	12
<i>Previews</i>	24
<i>Color Blindness Simulation</i>	27
<i>CSS Examples</i>	30

Color

Yxy(56.8705, 0.3401, 0.3291)

Conversions

Conversions Part 1

Format	Color
Hex	E0BFBF
RGB	224, 191, 191
RGB Percent	88%, 75%, 75%
CMY	0.1216, 0.2509, 0.2510
CMYK	0.00, 0.15, 0.15, 0.12
HSL	0°, 35%, 81%
HSV	0°, 15%, 88%
XYZ	58.7714, 56.8705, 57.1643
YIQ	200.8670, 19.6680, 6.9960

Conversions

Conversions Part 2

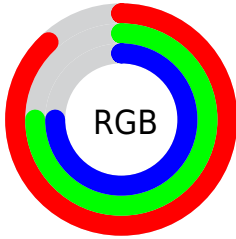
Format	Color
R _Y B	224, 191, 191
Decimal	14729151
CIE Lab	80.11, 11.72, 4.36
CIE LCh	80, 12.501, 20.401
Yxy	56.8705, 0.3401, 0.3291
Android (android.graphics.Color)	4292919231 (0xFFE0BFBF)
YUV	200.8670, -4.8644, 20.2876
Hunter-Lab	75.4125, 7.1388, 7.8457

Details

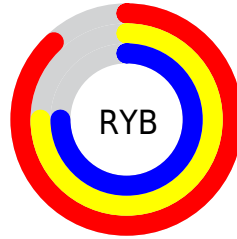
The Yxy color $56.8705, 0.3401, 0.3291$ is a light color, and the websafe version is hex `FFCCCC`. A complement of this color would be $69.7507, 0.2904, 0.3289$, and the grayscale version is $58.3440, 0.3127, 0.3290$.

A 20% lighter version of the original color is $94.4969, 0.3178, 0.3290$, and $28.3368, 0.3464, 0.3291$ is the 20% darker color. If you saturate the color by 10%, you get $46.9315, 0.3646, 0.3292$, and if you desaturate by 10%, it is $68.4577, 0.3205, 0.3290$.

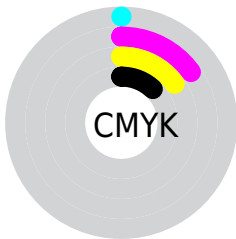
Distribution



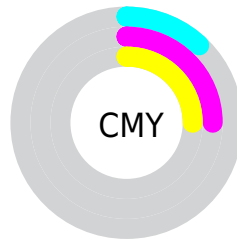
- Red (88%)
- Green (75%)
- Blue (75%)



- Red (88%)
- Yellow (75%)
- Blue (75%)



- Cyan (0%)
- Magenta (15%)
- Yellow (15%)
- Black (12%)





- Cyan (12%)
- Magenta (25%)
- Yellow (25%)

Brightness & Saturation Gradients


These gradients show how the Yxy color 56.8705, 0.3401, 0.3291 changes by changing the brightness by 10 percent. The first figure shows a shift by +10% for each color and the second figure -10%.

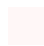
Similar to the brightness gradients but the following saturation gradients show a change of the Yxy color 56.8705, 0.3401, 0.3291 by changing the saturation by 10% instead.

 56.8705, 0.3401,
0.3291

 56.8705, 0.3401,
0.3291


412.9639, 0.3268,
0.3292

 40.9013, 0.3433,
0.3290


 100.2762, 0.3353,
0.3292

 28.2420, 0.3474,
0.3290


128.4815, 0.3335,
0.3292

 18.5081, 0.3527,
0.3288


161.5342, 0.3320,
0.3292

 11.3154, 0.3599,
0.3286

199.8188, 0.3307,
0.3292

 6.2794, 0.3703,
0.3281

243.7197, 0.3295,
0.3292

 3.0157, 0.3865,
0.3271

293.6213, 0.3285,

 1.1399, 0.4153,

0.3292

0.3246

349.9078, 0.3276,
0.3292

0.0118, 0.9618,
0.0382

0.0000, 0.0000,
0.0000

56.8705, 0.3401,
0.3291

56.8705, 0.3401,
0.3291

46.9315, 0.3646,
0.3292

68.4577, 0.3205,
0.3290

38.5585, 0.3950,
0.3293

81.7549, 0.3049,
0.3290

31.6742, 0.4321,
0.3294

94.5853, 0.2940,
0.3289

26.1913, 0.4757,
0.3296

■ 22.0138, 0.5235,
0.3297

■ 19.0332, 0.5704,
0.3298

■ 17.1239, 0.6090,
0.3299

■ 16.1325, 0.6327,
0.3300

■ 15.8482, 0.6400,
0.3300

Harmonies

Analogous

The Analogous color harmony consists of three colors that are next to each other on the color wheel.



56.8705, 0.3276, 0.3156



56.8705, 0.3401, 0.3291



56.8705, 0.3451, 0.3429

Triad

The Triadic color harmony groups three colors that are evenly spaced from another and form a triangle on the color wheel.



56.8705, 0.3401, 0.3291



56.8705, 0.3135, 0.3540



56.8705, 0.2849, 0.3043

Complementary

The Complementary color scheme is a pair of colors which are on the opposite of each other on the color wheel.



56.8705, 0.3401, 0.3291



69.7507, 0.2904, 0.3289

Split Complementary

Split-complementary colors differ from the complementary color scheme. The scheme consists of three colors, the original color and two neighbors of the complement color.



56.8705, 0.2814, 0.3138



56.8705, 0.3401, 0.3291



56.8705, 0.2977, 0.3429

Square

The Square scheme is like the rectangle color scheme, but the four colors are evenly spaced on the color wheel.



56.8705, 0.3401, 0.3291



56.8705, 0.3295, 0.3578



56.8705, 0.2860, 0.3280



56.8705, 0.2957, 0.3014

Rectangle

The Rectangle color scheme consists of four colors that form a rectangle on the color wheel.



56.8705, 0.3401, 0.3291



56.8705, 0.3434, 0.3506



56.8705, 0.2860, 0.3280



56.8705, 0.2828, 0.3068

Sweetspot

The Sweet Spot groups the original color and five complimentary colors.



56.8730, 0.3401, 0.3291



93.0278, 0.3193, 0.3290



58.4845, 0.3144, 0.2927



19.6401, 0.3206, 0.3290



0.0000, 0.0000, 0.0000



21.4041, 0.3127, 0.3290

Same Dimension

The Same Dimension uses a secret algorithm to generate beautiful new colors.



56.8730, 0.3401, 0.3291



71.5316, 0.3478, 0.3291



64.4699, 0.3374, 0.3476



13.7018, 0.3292, 0.3291



9.2265, 0.6400, 0.3300



0.6400, 0.6399, 0.3301

Inverse Universe

The Inverse Universe completely reimagines the original color for something new.



69.7507, 0.2904, 0.3289



92.2927, 0.2855, 0.3289



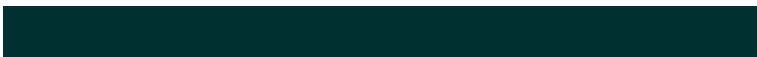
61.3198, 0.2897, 0.3097



15.5709, 0.2982, 0.3289



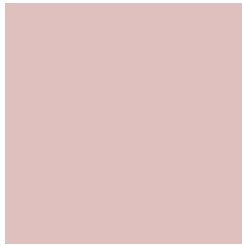
34.1232, 0.2246, 0.3286



2.3657, 0.2246, 0.3286

Previews

White Background



This preview shows how the Yxy color 56.8705, 0.3401, 0.3291 looks on a white background.

Color Contrast Check

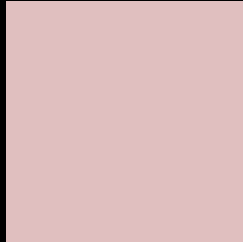
Large Text (above 18pt) WCAG AA × Fail

Any Text WCAG AA × Fail

Large Text (above 18pt) WCAG AAA × Fail

Any Text WCAG AAA × Fail

Black Background



This preview shows how the Yxy color 56.8705, 0.3401, 0.3291 looks on a black background.

Color Contrast Check

Large Text (above 18pt) WCAG AA ✓ Pass

Any Text WCAG AA ✓ Pass

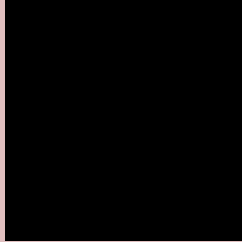
Large Text (above 18pt) WCAG AAA ✓ Pass

Any Text WCAG AAA ✓ Pass

If you want to check with other color combinations, try the [Color Contrast Checker](#).

Yxy 56.8705, 0.3401, 0.3291

Background



This preview shows how black text looks on a background with the Yxy color 56.8705, 0.3401, 0.3291.



This preview shows how white text looks on a background with the Yxy color 56.8705, 0.3401, 0.3291.

Color Blindness Simulation

Color vision deficiency is a very complex topic, and I could not describe the different causes any better than Wikipedia does, so if you want to learn more, you should check out their [article about color blindness](#).

Dichromacy



Original Color

56.8705, 0.3401, 0.3291

Protanopia

57.0248, 0.3189, 0.3326

Deuteranopia

56.8330, 0.3374, 0.3302



Tritanopia

56.9236, 0.3316, 0.3122

Trichromacy



Original Color

56.8705, 0.3401, 0.3291

Protanomaly

56.7741, 0.3264, 0.3302

Deuteranomaly

56.9905, 0.3383, 0.3302

Tritanomaly

56.9580, 0.3347, 0.3189

Monochromacy



Original Color

56.8705, 0.3401, 0.3291

Achromatopsia

58.4078, 0.3127, 0.3290

Achromatomaly

57.5190, 0.3223, 0.3290

CSS Examples

Text

The CSS property to change the color of the text to Yxy 56.8705, 0.3401, 0.3291 is called "color". The color property can be set on classes, ids or directly on the HTML element.

This example shows how text in the color `rgb(224, 191, 191)` looks like.

```
.text, #text, p{  
    color:rgb(224, 191, 191)  
}
```

If you want to add a text shadow in that color use the text-shadow property, you can generate a text shadow directly with our [CSS Text Shadow Generator](#).

Here you see how black text with a 4 pixel rgb(224, 191, 191) colored shadow looks like.

```
.shadow{ text-shadow: 4px 4px 2px rgb(224, 191, 191) }
```

Border

The CSS property to change the border of an element to Yxy 56.8705, 0.3401, 0.3291 is called "border". The border property can be set on classes, ids or directly on the HTML element.

This example shows the color as border, it can be applied via the CSS property "border" or "border-color".

```
.border, #border, table{ border:4px solid rgb(224, 191, 191) }
```

If only the border color should be changed use the property border-color.

```
.border{ border-color:rgb(224, 191, 191) }
```

If you want to add a box shadow in that color use:

Here you see how a box with a 4 pixel rgb(224, 191, 191) colored shadow looks like.

```
.boxshadow{ -moz-box-shadow:4px 4px 4px  
4px rgb(224, 191, 191); -webkit-box-  
shadow:4px 4px 4px 4px rgb(224, 191, 191);  
box-shadow:4px 4px 4px 4px rgb(224, 191,  
191) }
```


Background

The CSS property to change the background color of an element to Yxy 56.8705, 0.3401, 0.3291 is called "background". The background property can be set on classes, ids or directly on the HTML element.

```
.background, #background, body{  
background: rgb(224, 191, 191) }
```

If only the background color should be changed can be used:

```
.background{ background-color: rgb(224,  
191, 191) }
```

This example shows the color as background, it is applied via the CSS property "background".

To optimize and compress your CSS code, you can use our [online CSS compressor and optimizer](#) based on csstidy. If you want to create a linear or radial gradient as background or border, check our [CSS Gradient Generator](#).

Hey! You found this booklet interesting? Support Converting Colors with the new Membership Option!

The pro membership hides all ads, plus gives you double the colors in the color bucket, and more awesome pro features!

[Learn more, Memberships starting at \\$2.50/m!](#)

**Follow me
on Twitter!**

@ConvertingColor