

Converting Colors

Yxy(57.3510, 0.3238, 0.3240)

Have a look what the booklet for
Yxy(57.3510, 0.3238, 0.3240)
contains.

Yxy(57.2999, 0.3242, 0.3244)	3
Conversions	4
Details	6
Harmonies	12
Previews	24
Color Blindness Simulation	27
CSS Examples	30

Color

Yxy(57.2999, 0.3242, 0.3244)

Conversions

Conversions Part 1

Format	Color
Hex	D5C3C7
RGB	213, 195, 199
RGB Percent	84%, 76%, 78%
CMY	0.1647, 0.2353, 0.2196
CMYK	0.00, 0.08, 0.07, 0.16
HSL	347°, 18%, 80%
HSV	347°, 8%, 84%
XYZ	57.2646, 57.2999, 62.0690
YIQ	200.8380, 9.4440, 5.0600

Conversions

Conversions Part 2

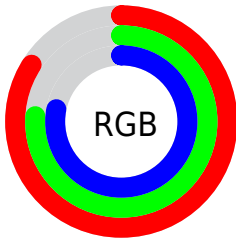
Format	Color
RYB	213, 195, 199
Decimal	14009287
CIELab	80.35, 7.01, 0.29
CIElCh	80, 7.011, 2.332
Yxy	57.2999, 0.3242, 0.3244
Android (android.graphics.Color)	4292199367 (0xFFD5C3C7)
YUV	200.8380, -0.9061, 10.6661
Hunter-Lab	75.6967, 2.5661, 4.3717

Details

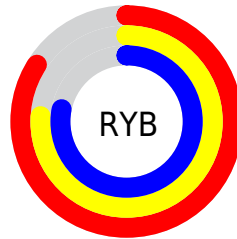
The Yxy color **57.2999, 0.3242, 0.3244** is a light color, and the websafe version is hex **CCCCCC**. A complement of this color would be **63.7983, 0.3024, 0.3337**, and the grayscale version is **58.3059, 0.3127, 0.3290**.

A 20% lighter version of the original color is **98.1008, 0.3128, 0.3261**, and **28.3632, 0.3271, 0.3229** is the 20% darker color. If you saturate the color by 10%, you get **47.6992, 0.3407, 0.3186**, and if you desaturate by 10%, it is **68.3511, 0.3108, 0.3298**.

Distribution



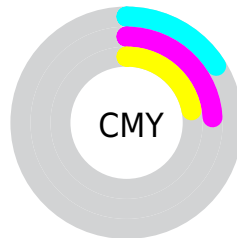
- Red (84%)
- Green (76%)
- Blue (78%)



- Red (84%)
- Yellow (76%)
- Blue (78%)



- Cyan (0%)
- Magenta (8%)
- Yellow (7%)
- Black (16%)



- Cyan (16%)
- Magenta (24%)
- Yellow (22%)

Brightness & Saturation Gradients

These gradients show how the Yxy color 57.2999, 0.3242, 0.3244 changes by changing the brightness by 10 percent. The first figure shows a shift by +10% for each color and the second figure -10%.

Similar to the brightness gradients but the following saturation gradients show a change of the Yxy color 57.2999, 0.3242, 0.3244 by changing the saturation by 10% instead.

■ 57.2999, 0.3242,
0.3244

■ 57.2999, 0.3242,
0.3244

414.5721, 0.3187,
0.3266

■ 41.2461, 0.3255,
0.3239

■ 100.9026, 0.3222,
0.3252

■ 28.5114, 0.3272,
0.3232

129.2204, 0.3215,
0.3255

■ 18.7115, 0.3294,
0.3223

162.3948, 0.3208,
0.3258

■ 11.4620, 0.3324,
0.3211

200.8104, 0.3203,
0.3260

■ 6.3785, 0.3366,
0.3194

244.8515, 0.3198,
0.3262

■ 3.0766, 0.3432,
0.3167

294.9026, 0.3194,

■ 1.1718, 0.3548,

0.3264

0.3119

351.3480, 0.3190,
0.3265

0.0385, 0.7743,
0.1437

0.0000, 0.0000,
0.0000

57.2999, 0.3242,
0.3244

57.2999, 0.3242,
0.3244

47.6992, 0.3407,
0.3186

68.3511, 0.3108,
0.3298

39.4815, 0.3611,
0.3126

80.9018, 0.3000,
0.3348

32.5850, 0.3860,
0.3066

92.4902, 0.2910,
0.3354

26.9404, 0.4159,
0.3012

92.8869, 0.2877,
0.3289

■ 22.4719, 0.4509,
0.2969

■ 19.0957, 0.4900,
0.2948

■ 16.7165, 0.5305,
0.2958

■ 15.2226, 0.5684,
0.3007

■ 14.4467, 0.5994,
0.3087

Harmonies

Analogous

The Analogous color harmony consists of three colors that are next to each other on the color wheel.



57.2999, 0.3157, 0.3177



57.2999, 0.3242, 0.3244



57.2999, 0.3296, 0.3324

Triad

The Triadic color harmony groups three colors that are evenly spaced from another and form a triangle on the color wheel.



57.2999, 0.3242, 0.3244



57.2999, 0.3188, 0.3447



57.2999, 0.2953, 0.3181

Complementary

The Complementary color scheme is a pair of colors which are on the opposite of each other on the color wheel.



57.2999, 0.3242, 0.3244



63.7983, 0.3024, 0.3337

Split Complementary

Split-complementary colors differ from the complementary color scheme. The scheme consists of three colors, the original color and two neighbors of the complement color.



57.2999, 0.2961, 0.3252



57.2999, 0.3242, 0.3244



57.2999, 0.3096, 0.3408

Square

The Square scheme is like the rectangle color scheme, but the four colors are evenly spaced on the color wheel.



57.2999, 0.3242, 0.3244



57.2999, 0.3265, 0.3442



57.2999, 0.3013, 0.3336



57.2999, 0.2990, 0.3140

Rectangle

The Rectangle color scheme consists of four colors that form a rectangle on the color wheel.



57.2999, 0.3242, 0.3244



57.2999, 0.3308, 0.3374



57.2999, 0.3013, 0.3336



57.2999, 0.2950, 0.3202

Sweetspot

The Sweet Spot groups the original color and five complimentary colors.



57.3024, 0.3242, 0.3244



94.8381, 0.3166, 0.3274



57.3636, 0.3104, 0.3082



20.0114, 0.3177, 0.3269



0.0000, 0.0000, 0.0000



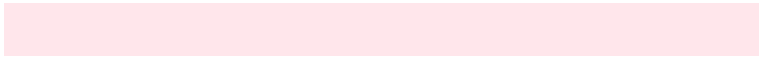
21.4041, 0.3127, 0.3290

Same Dimension

The Same Dimension uses a secret algorithm to generate beautiful new colors.



57.3024, 0.3242, 0.3244



83.5825, 0.3267, 0.3235



59.3055, 0.3267, 0.3346



12.4654, 0.3257, 0.3239



8.7800, 0.6003, 0.3080



0.5422, 0.5510, 0.2809

Inverse Universe

The Inverse Universe completely reimagines the original color for something new.



57.3024, 0.3242, 0.3244



83.5825, 0.3267, 0.3235



61.6190, 0.2997, 0.3233



12.4654, 0.3257, 0.3239



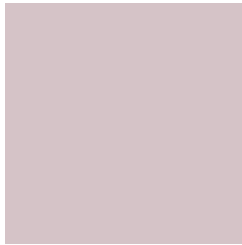
8.7800, 0.6003, 0.3080



0.5422, 0.5510, 0.2809

Previews

White Background



This preview shows how the Yxy color 57.2999, 0.3242, 0.3244 looks on a white background.

Color Contrast Check

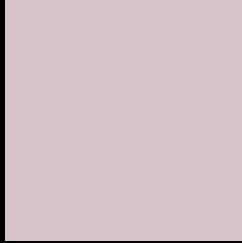
Large Text (above 18pt) WCAG AA × Fail

Any Text WCAG AA × Fail

Large Text (above 18pt) WCAG AAA × Fail

Any Text WCAG AAA × Fail

Black Background



This preview shows how the Yxy color 57.2999, 0.3242, 0.3244 looks on a black background.

Color Contrast Check

Large Text (above 18pt) WCAG AA ✓ Pass

Any Text WCAG AA ✓ Pass

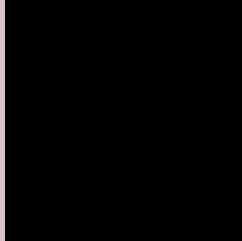
Large Text (above 18pt) WCAG AAA ✓ Pass

Any Text WCAG AAA ✓ Pass

If you want to check with other color combinations, try the [Color Contrast Checker](#).

Yxy 57.2999, 0.3242, 0.3244

Background



This preview shows how black text looks on a background with the Yxy color 57.2999, 0.3242, 0.3244.



This preview shows how white text looks on a background with the Yxy color 57.2999, 0.3242, 0.3244.

Color Blindness Simulation

Color vision deficiency is a very complex topic, and I could not describe the different causes any better than Wikipedia does, so if you want to learn more, you should check out their [article about color blindness](#).

Dichromacy



Original Color

57.2999, 0.3242, 0.3244

Protanopia

57.1618, 0.3137, 0.3254

Deuteranopia

57.1689, 0.3285, 0.3222



Tritanopia

57.0395, 0.3176, 0.3107

Trichromacy



Original Color

57.2999, 0.3242, 0.3244

Protanomaly

57.2244, 0.3176, 0.3255

Deuteranomaly

57.3060, 0.3267, 0.3233

Tritanomaly

57.2875, 0.3205, 0.3164

Monochromacy



Original Color

57.2999, 0.3242, 0.3244

Achromatopsia

58.4078, 0.3127, 0.3290

Achromatomaly

57.9961, 0.3167, 0.3278

CSS Examples

Text

The CSS property to change the color of the text to Yxy 57.2999, 0.3242, 0.3244 is called "color". The color property can be set on classes, ids or directly on the HTML element.

This example shows how text in the color `rgb(213, 195, 199)` looks like.

```
.text, #text, p{  
    color:rgb(213, 195, 199)  
}
```

If you want to add a text shadow in that color use the text-shadow property, you can generate a text shadow directly with our [CSS Text Shadow Generator](#).

Here you see how black text with a 4 pixel rgb(213, 195, 199) colored shadow looks like.

```
.shadow{ text-shadow: 4px 4px 2px rgb(213, 195, 199) }
```

Border

The CSS property to change the border of an element to Yxy 57.2999, 0.3242, 0.3244 is called "border". The border property can be set on classes, ids or directly on the HTML element.

This example shows the color as border, it can be applied via the CSS property "border" or "border-color".

```
.border, #border, table{ border:4px solid rgb(213, 195, 199) }
```

If only the border color should be changed use the property border-color.

```
.border{ border-color:rgb(213, 195, 199) }
```

If you want to add a box shadow in that color use:

Here you see how a box with a 4 pixel rgb(213, 195, 199) colored shadow looks like.

```
.boxshadow{ -moz-box-shadow:4px 4px 4px  
4px rgb(213, 195, 199); -webkit-box-  
shadow:4px 4px 4px 4px rgb(213, 195, 199);  
box-shadow:4px 4px 4px 4px rgb(213, 195,  
199) }
```


Background

The CSS property to change the background color of an element to Yxy 57.2999, 0.3242, 0.3244 is called "background". The background property can be set on classes, ids or directly on the HTML element.

```
.background, #background, body{  
background: rgb(213, 195, 199) }
```

If only the background color should be changed can be used:

```
.background{ background-color: rgb(213,  
195, 199) }
```

This example shows the color as background, it is applied via the CSS property "background".

To optimize and compress your CSS code, you can use our [online CSS compressor and optimizer](#) based on csstidy. If you want to create a linear or radial gradient as background or border, check our [CSS Gradient Generator](#).

Hey! You found this booklet interesting? Support Converting Colors with the new Membership Option!

The pro membership hides all ads, plus gives you double the colors in the color bucket, and more awesome pro features!

[Learn more, Memberships starting at \\$2.50/m!](#)

**Follow me
on Twitter!**

@ConvertingColor