

Converting Colors

Yxy(57.3765, 0.3199, 0.3160)

Have a look what the booklet for
Yxy(57.3765, 0.3199, 0.3160)
contains.

Yxy(57.3359, 0.3198, 0.3152)	3
Conversions	4
Details	6
Harmonies	12
Previews	24
Color Blindness Simulation	27
CSS Examples	30

Color

Yxy(57.3359, 0.3198, 0.3152)

Conversions

Conversions Part 1

Format	Color
Hex	D6C2CE
RGB	214, 194, 206
RGB Percent	84%, 76%, 81%
CMY	0.1606, 0.2392, 0.1921
CMYK	0.00, 0.09, 0.04, 0.16
HSL	324°, 20%, 80%
HSV	324°, 9%, 84%
XYZ	58.1727, 57.3359, 66.3947
YIQ	201.3480, 8.0680, 7.9720

Conversions

Conversions Part 2

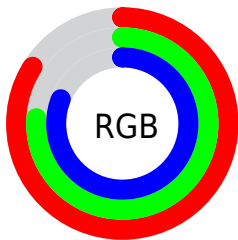
Format	Color
R_{YB}	214, 194, 206
Decimal	14074574
CIE _{Lab}	80.37, 9.14, -3.45
CIE _{LCh}	80, 9.767, 339.339
Yxy	57.3359, 0.3198, 0.3152
Android (android.graphics.Color)	4292264654 (0xFFD6C2CE)
YUV	201.3480, 2.2934, 11.0958
Hunter-Lab	75.7205, 4.6227, 1.0165

Details

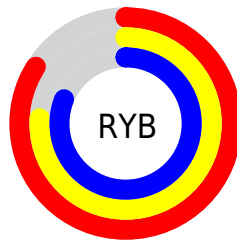
The Yxy color $57.3359, 0.3198, 0.3152$ is a light color, and the websafe version is hex `CCCCCC`. A complement of this color would be $63.8476, 0.3062, 0.3432$, and the grayscale version is $58.6216, 0.3127, 0.3290$.

A 20% lighter version of the original color is $97.4744, 0.3129, 0.3252$, and $28.3941, 0.3211, 0.3107$ is the 20% darker color. If you saturate the color by 10%, you get $48.0820, 0.3288, 0.2998$, and if you desaturate by 10%, it is $67.9897, 0.3123, 0.3299$.

Distribution



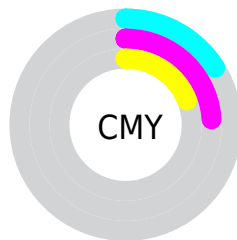
- Red (84%)
- Green (76%)
- Blue (81%)



- Red (84%)
- Yellow (76%)
- Blue (81%)



- Cyan (0%)
- Magenta (9%)
- Yellow (4%)
- Black (16%)





- Cyan (16%)
- Magenta (24%)
- Yellow (19%)

Brightness & Saturation Gradients

These gradients show how the Yxy color 57.3359, 0.3198, 0.3152 changes by changing the brightness by 10 percent. The first figure shows a shift by +10% for each color and the second figure -10%.


Similar to the brightness gradients but the following saturation gradients show a change of the Yxy color 57.3359, 0.3198, 0.3152 by changing the saturation by 10% instead.

 57.3359, 0.3198,
0.3152

 57.3359, 0.3198,
0.3152

414.7068, 0.3164,
0.3218

 41.2750, 0.3206,
0.3136

 100.9551, 0.3186,
0.3175

 28.5340, 0.3216,
0.3117

129.2823, 0.3181,
0.3184

 18.7286, 0.3229,
0.3091


162.4669, 0.3178,
0.3192

 11.4743, 0.3246,
0.3058

200.8935, 0.3174,
0.3199

 6.3868, 0.3271,
0.3010

244.9463, 0.3171,
0.3204

 3.0817, 0.3309,
0.2937

295.0099, 0.3169,

 1.1745, 0.3372,

0.3209

0.2813

351.4686, 0.3166,
0.3214

0.0408, 0.4454,
0.0693

0.0000, 0.0000,
0.0000

57.3359, 0.3198,
0.3152

57.3359, 0.3198,
0.3152

48.0820, 0.3288,
0.2998

67.9897, 0.3123,
0.3299

40.1618, 0.3394,
0.2839

80.0912, 0.3060,
0.3437

33.5148, 0.3518,
0.2682

91.6340, 0.3008,
0.3533

28.0730, 0.3661,
0.2534

92.1329, 0.2961,
0.3442

■ 23.7619, 0.3822,
0.2404

■ 92.6560, 0.2915,
0.3352

■ 20.4987, 0.3997,
0.2305

■ 93.0423, 0.2883,
0.3289

■ 18.1892, 0.4181,
0.2248

■ 16.7220, 0.4367,
0.2241

■ 15.9108, 0.4548,
0.2282

Harmonies

Analogous

The Analogous color harmony consists of three colors that are next to each other on the color wheel.



57.3359, 0.3069, 0.3089



57.3359, 0.3198, 0.3152



57.3359, 0.3310, 0.3251

Triad

The Triadic color harmony groups three colors that are evenly spaced from another and form a triangle on the color wheel.



57.3359, 0.3198, 0.3152



57.3359, 0.3297, 0.3509



57.3359, 0.2888, 0.3211

Complementary

The Complementary color scheme is a pair of colors which are on the opposite of each other on the color wheel.



57.3359, 0.3198, 0.3152



63.8476, 0.3062, 0.3432

Split Complementary

Split-complementary colors differ from the complementary color scheme. The scheme consists of three colors, the original color and two neighbors of the complement color.



57.3359, 0.2947, 0.3327



57.3359, 0.3198, 0.3152



57.3359, 0.3182, 0.3502

Square

The Square scheme is like the rectangle color scheme, but the four colors are evenly spaced on the color wheel.



57.3359, 0.3198, 0.3152



57.3359, 0.3368, 0.3456



57.3359, 0.3054, 0.3435



57.3359, 0.2892, 0.3120

Rectangle

The Rectangle color scheme consists of four colors that form a rectangle on the color wheel.



57.3359, 0.3198, 0.3152



57.3359, 0.3359, 0.3325



57.3359, 0.3054, 0.3435



57.3359, 0.2901, 0.3248

Sweetspot

The Sweet Spot groups the original color and five complimentary colors.



57.3384, 0.3198, 0.3152



95.0198, 0.3149, 0.3246



55.9950, 0.3044, 0.3055



20.0604, 0.3155, 0.3234



0.0000, 0.0000, 0.0000



21.4041, 0.3127, 0.3290

Same Dimension

The Same Dimension uses a secret algorithm to generate beautiful new colors.



57.3384, 0.3198, 0.3152



82.6876, 0.3213, 0.3126



56.8674, 0.3275, 0.3267



12.5445, 0.3198, 0.3151



9.6075, 0.4535, 0.2272



0.5956, 0.4245, 0.2112

Inverse Universe

The Inverse Universe completely reimagines the original color for something new.



57.3384, 0.3198, 0.3152



82.6876, 0.3213, 0.3126



64.3372, 0.2997, 0.3313



12.5445, 0.3198, 0.3151



9.6075, 0.4535, 0.2272



0.5956, 0.4245, 0.2112

Previews

White Background



This preview shows how the Yxy color 57.3359, 0.3198, 0.3152 looks on a white background.

Color Contrast Check

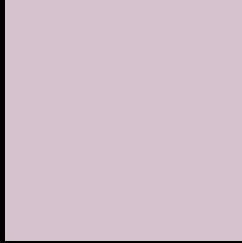
Large Text (above 18pt) WCAG AA × Fail

Any Text WCAG AA × Fail

Large Text (above 18pt) WCAG AAA × Fail

Any Text WCAG AAA × Fail

Black Background



This preview shows how the Yxy color 57.3359, 0.3198, 0.3152 looks on a black background.

Color Contrast Check

Large Text (above 18pt) WCAG AA ✓ Pass

Any Text WCAG AA ✓ Pass

Large Text (above 18pt) WCAG AAA ✓ Pass

Any Text WCAG AAA ✓ Pass

If you want to check with other color combinations, try the [Color Contrast Checker](#).

Yxy 57.3359, 0.3198, 0.3152

Background



This preview shows how black text looks on a background with the Yxy color 57.3359, 0.3198, 0.3152.



This preview shows how white text looks on a background with the Yxy color 57.3359, 0.3198, 0.3152.

Color Blindness Simulation

Color vision deficiency is a very complex topic, and I could not describe the different causes any better than Wikipedia does, so if you want to learn more, you should check out their [article about color blindness](#).

Dichromacy



Original Color

57.3359, 0.3198, 0.3152

Protanopia

57.2710, 0.3063, 0.3160

Deuteranopia

57.1951, 0.3215, 0.3141



Tritanopia

57.4832, 0.3175, 0.3118

Trichromacy



Original Color

57.3359, 0.3198, 0.3152

Protanomaly

57.4657, 0.3110, 0.3161

Deuteranomaly

57.0432, 0.3207, 0.3141

Tritanomaly

57.4338, 0.3183, 0.3129

Monochromacy



Original Color

57.3359, 0.3198, 0.3152

Achromatopsia

58.4078, 0.3127, 0.3290

Achromatomaly

57.8218, 0.3153, 0.3231

CSS Examples

Text

The CSS property to change the color of the text to Yxy 57.3359, 0.3198, 0.3152 is called "color". The color property can be set on classes, ids or directly on the HTML element.

This example shows how text in the color `rgb(214, 194, 206)` looks like.

```
.text, #text, p{  
    color:rgb(214, 194, 206)  
}
```

If you want to add a text shadow in that color use the text-shadow property, you can generate a text shadow directly with our [CSS Text Shadow Generator](#).

Here you see how black text with a 4 pixel rgb(214, 194, 206) colored shadow looks like.

```
.shadow{ text-shadow: 4px 4px 2px rgb(214, 194, 206) }
```

Border

The CSS property to change the border of an element to Yxy 57.3359, 0.3198, 0.3152 is called "border". The border property can be set on classes, ids or directly on the HTML element.

This example shows the color as border, it can be applied via the CSS property "border" or "border-color".

```
.border, #border, table{ border:4px solid rgb(214, 194, 206) }
```

If only the border color should be changed use the property `border-color`.

```
.border{ border-color:rgb(214, 194, 206) }
```

If you want to add a box shadow in that color use:

Here you see how a box with a 4 pixel `rgb(214, 194, 206)` colored shadow looks like.

```
.boxshadow{ -moz-box-shadow:4px 4px 4px  
4px rgb(214, 194, 206); -webkit-box-  
shadow:4px 4px 4px 4px rgb(214, 194, 206);  
box-shadow:4px 4px 4px 4px rgb(214, 194,  
206) }
```


Background

The CSS property to change the background color of an element to Yxy 57.3359, 0.3198, 0.3152 is called "background". The background property can be set on classes, ids or directly on the HTML element.

```
.background, #background, body{  
background: rgb(214, 194, 206) }
```

If only the background color should be changed can be used:

```
.background{ background-color: rgb(214,  
194, 206) }
```

This example shows the color as background, it is applied via the CSS property "background".

To optimize and compress your CSS code, you can use our [online CSS compressor and optimizer](#) based on csstidy. If you want to create a linear or radial gradient as background or border, check our [CSS Gradient Generator](#).

Hey! You found this booklet interesting? Support Converting Colors with the new Membership Option!

The pro membership hides all ads, plus gives you double the colors in the color bucket, and more awesome pro features!

[Learn more, Memberships starting at \\$2.50/m!](#)

**Follow me
on Twitter!**

@ConvertingColor