

Converting Colors

Yxy(57.4813, 0.3524, 0.3414)

Have a look what the booklet for
Yxy(57.4813, 0.3524, 0.3414)
contains.

| | |
|---|----|
| Yxy(57.6935, 0.3523, 0.3416) | 3 |
| Conversions | 4 |
| Details | 6 |
| Harmonies | 12 |
| Previews | 24 |
| Color Blindness Simulation | 27 |
| CSS Examples | 30 |

Color

Yxy(57.6935, 0.3523, 0.3416)

Conversions

Conversions Part 1

| Format | Color |
|-------------|---------------------------|
| Hex | E5C0B5 |
| RGB | 229, 192, 181 |
| RGB Percent | 90%, 75%, 71% |
| CMY | 0.1020, 0.2470, 0.2903 |
| CMYK | 0.00, 0.16, 0.21, 0.10 |
| HSL | 14°, 48%, 80% |
| HSV | 14°, 21%, 90% |
| XYZ | 59.5006, 57.6935, 51.6978 |
| YIQ | 201.8090, 25.5830, 4.4230 |

Conversions

Conversions Part 2

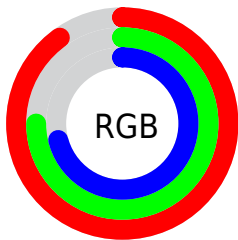
| Format | Color |
|-------------------------------------|--------------------------------|
| R _Y B | 229, 195, 181 |
| Decimal | 15057077 |
| CIE Lab | 80.57, 11.48, 10.47 |
| CIE LCh | 81, 15.539, 42.356 |
| Yxy | 57.6935, 0.3523, 0.3416 |
| Android (android.graphics.Color) | 4293247157 (0xFFE5C0B5) |
| YUV | 201.8090, -10.2588, 23.8465 |
| Hunter-Lab | 75.9562, 6.9053, 12.8150 |

Details

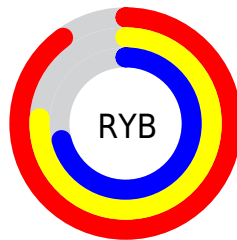
The Yxy color **57.6935, 0.3523, 0.3416** is a light color, and the websafe version is hex **FFCCCC**. A complement of this color would be **65.5994, 0.2806, 0.3160**, and the grayscale version is **58.9910, 0.3127, 0.3290**.

A 20% lighter version of the original color is **94.5092, 0.3238, 0.3397**, and **28.6197, 0.3632, 0.3440** is the 20% darker color. If you saturate the color by 10%, you get **49.5453, 0.3772, 0.3480**, and if you desaturate by 10%, it is **66.9296, 0.3315, 0.3354**.

Distribution



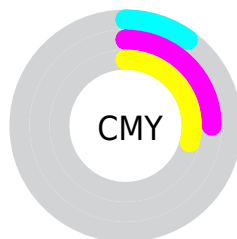
- Red (90%)
- Green (75%)
- Blue (71%)



- Red (90%)
- Yellow (76%)
- Blue (71%)



- Cyan (0%)
- Magenta (16%)
- Yellow (21%)
- Black (10%)





- Cyan (10%)
- Magenta (25%)
- Yellow (29%)

Brightness & Saturation Gradients


These gradients show how the Yxy color 57.6935, 0.3523, 0.3416 changes by changing the brightness by 10 percent. The first figure shows a shift by +10% for each color and the second figure -10%.

Similar to the brightness gradients but the following saturation gradients show a change of the Yxy color 57.6935, 0.3523, 0.3416 by changing the saturation by 10% instead.


 57.6935, 0.3523,
0.3416

 57.6935, 0.3523,
0.3416


416.0429, 0.3331,
0.3358

 41.5623, 0.3569,
0.3429


 101.4764, 0.3454,
0.3396

 28.7587, 0.3628,
0.3445


129.8969, 0.3428,
0.3388

 18.8984, 0.3704,
0.3464


163.1825, 0.3406,
0.3382

 11.5969, 0.3808,
0.3490

201.7178, 0.3387,
0.3376

 6.4698, 0.3956,
0.3522

245.8871, 0.3370,
0.3371

 3.1328, 0.4184,
0.3565

296.0748, 0.3355,

 1.2015, 0.4659,

0.3366

0.3680

352.6652, 0.3342,
0.3362

0.0629, 0.8439,
0.1561

0.0000, 0.0000,
0.0000

57.6935, 0.3523,
0.3416

57.6935, 0.3523,
0.3416

49.5453, 0.3772,
0.3480

66.9296, 0.3315,
0.3354

42.4368, 0.4068,
0.3544

77.2837, 0.3142,
0.3295

36.3281, 0.4410,
0.3600

88.7946, 0.2999,
0.3242

31.1732, 0.4794,
0.3642

95.3982, 0.2970,
0.3290

■ 26.9229, 0.5198,
0.3659

■ 23.5228, 0.5588,
0.3641

■ 20.9127, 0.5919,
0.3583

■ 19.1715, 0.6140,
0.3507

Harmonies

Analogous

The Analogous color harmony consists of three colors that are next to each other on the color wheel.



57.6935, 0.3432, 0.3243



57.6935, 0.3523, 0.3416



57.6935, 0.3503, 0.3563

Triad

The Triadic color harmony groups three colors that are evenly spaced from another and form a triangle on the color wheel.



57.6935, 0.3523, 0.3416



57.6935, 0.2990, 0.3507



57.6935, 0.2873, 0.2952

Complementary

The Complementary color scheme is a pair of colors which are on the opposite of each other on the color wheel.



57.6935, 0.3523, 0.3416



65.5994, 0.2806, 0.3160

Split Complementary

Split-complementary colors differ from the complementary color scheme. The scheme consists of three colors, the original color and two neighbors of the complement color.



57.6935, 0.2763, 0.3008



57.6935, 0.3523, 0.3416



57.6935, 0.2829, 0.3327

Square

The Square scheme is like the rectangle color scheme, but the four colors are evenly spaced on the color wheel.



57.6935, 0.3523, 0.3416



57.6935, 0.3191, 0.3624



57.6935, 0.2747, 0.3143



57.6935, 0.3053, 0.2981

Rectangle

The Rectangle color scheme consists of four colors that form a rectangle on the color wheel.



57.6935, 0.3523, 0.3416



57.6935, 0.3431, 0.3626



57.6935, 0.2747, 0.3143



57.6935, 0.2827, 0.2961

Sweetspot

The Sweet Spot groups the original color and five complimentary colors.



57.6961, 0.3523, 0.3416



91.7645, 0.3226, 0.3324



54.7859, 0.3233, 0.2877



19.4564, 0.3237, 0.3328



0.0000, 0.0000, 0.0000



21.4041, 0.3127, 0.3290

Same Dimension

The Same Dimension uses a secret algorithm to generate beautiful new colors.



57.6961, 0.3523, 0.3416



69.1287, 0.3622, 0.3443



68.7938, 0.3471, 0.3671



14.9028, 0.3287, 0.3345



11.1121, 0.6115, 0.3526



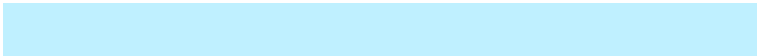
0.9601, 0.5833, 0.3750

Inverse Universe

The Inverse Universe completely reimagines the original color for something new.



65.5994, 0.2806, 0.3160



80.8533, 0.2744, 0.3131



54.3181, 0.2787, 0.2877



15.7451, 0.2981, 0.3235



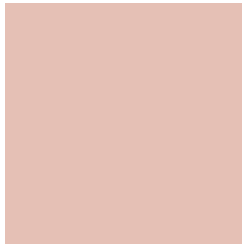
21.2599, 0.2037, 0.2533



1.7083, 0.2071, 0.2656

Previews

White Background



This preview shows how the Yxy color 57.6935, 0.3523, 0.3416 looks on a white background.

Color Contrast Check

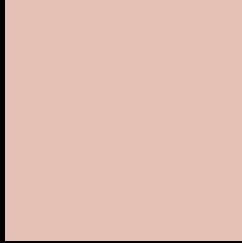
Large Text (above 18pt) WCAG AA × Fail

Any Text WCAG AA × Fail

Large Text (above 18pt) WCAG AAA × Fail

Any Text WCAG AAA × Fail

Black Background



This preview shows how the Yxy color 57.6935, 0.3523, 0.3416 looks on a black background.

Color Contrast Check

Large Text (above 18pt) WCAG AA ✓ Pass

Any Text WCAG AA ✓ Pass

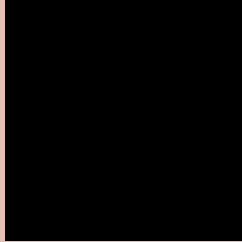
Large Text (above 18pt) WCAG AAA ✓ Pass

Any Text WCAG AAA ✓ Pass

If you want to check with other color combinations, try the [Color Contrast Checker](#).

Yxy 57.6935, 0.3523, 0.3416

Background



This preview shows how black text looks on a background with the Yxy color 57.6935, 0.3523, 0.3416.

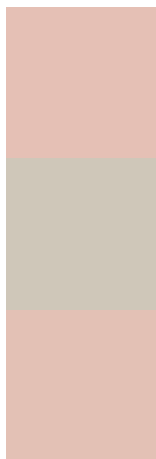


This preview shows how white text looks on a background with the Yxy color 57.6935, 0.3523, 0.3416.

Color Blindness Simulation

Color vision deficiency is a very complex topic, and I could not describe the different causes any better than Wikipedia does, so if you want to learn more, you should check out their [article about color blindness](#).

Dichromacy



Original Color

57.6935, 0.3523, 0.3416

Protanopia

57.6150, 0.3295, 0.3457

Deuteranopia

57.8070, 0.3504, 0.3428



Tritanopia

57.8628, 0.3374, 0.3136

Trichromacy



Original Color

57.6935, 0.3523, 0.3416

Protanomaly

57.3876, 0.3373, 0.3431

Deuteranomaly

57.9701, 0.3512, 0.3427

Tritanomaly

57.7560, 0.3429, 0.3235

Monochromacy



Original Color

57.6935, 0.3523, 0.3416

Achromatopsia

59.0619, 0.3127, 0.3290

Achromatomaly

58.2803, 0.3269, 0.3337

CSS Examples

Text

The CSS property to change the color of the text to Yxy 57.6935, 0.3523, 0.3416 is called "color". The color property can be set on classes, ids or directly on the HTML element.

This example shows how text in the color `rgb(229, 192, 181)` looks like.

```
.text, #text, p{  
    color:rgb(229, 192, 181)  
}
```

If you want to add a text shadow in that color use the text-shadow property, you can generate a text shadow directly with our [CSS Text Shadow Generator](#).

Here you see how black text with a 4 pixel rgb(229, 192, 181) colored shadow looks like.

```
.shadow{ text-shadow: 4px 4px 2px rgb(229, 192, 181) }
```

Border

The CSS property to change the border of an element to Yxy 57.6935, 0.3523, 0.3416 is called "border". The border property can be set on classes, ids or directly on the HTML element.

This example shows the color as border, it can be applied via the CSS property "border" or "border-color".

```
.border, #border, table{ border:4px solid rgb(229, 192, 181) }
```

If only the border color should be changed use the property `border-color`.

```
.border{ border-color:rgb(229, 192, 181) }
```

If you want to add a box shadow in that color use:

Here you see how a box with a 4 pixel `rgb(229, 192, 181)` colored shadow looks like.

```
.boxshadow{ -moz-box-shadow:4px 4px 4px  
4px rgb(229, 192, 181); -webkit-box-  
shadow:4px 4px 4px 4px rgb(229, 192, 181);  
box-shadow:4px 4px 4px 4px rgb(229, 192,  
181) }
```


Background

The CSS property to change the background color of an element to Yxy 57.6935, 0.3523, 0.3416 is called "background". The background property can be set on classes, ids or directly on the HTML element.

```
.background, #background, body{  
background: rgb(229, 192, 181) }
```

If only the background color should be changed can be used:

```
.background{ background-color: rgb(229,  
192, 181) }
```

This example shows the color as background, it is applied via the CSS property "background".

To optimize and compress your CSS code, you can use our [online CSS compressor and optimizer](#) based on csstidy. If you want to create a linear or radial gradient as background or border, check our [CSS Gradient Generator](#).

Hey! You found this booklet interesting? Support Converting Colors with the new Membership Option!

The pro membership hides all ads, plus gives you double the colors in the color bucket, and more awesome pro features!

[Learn more, Memberships starting at \\$2.50/m!](#)

**Follow me
on Twitter!**

@ConvertingColor