

Converting Colors

Yxy(57.5176, 0.3207, 0.3177)

Have a look what the booklet for
Yxy(57.5176, 0.3207, 0.3177)
contains.

Yxy(57.6860, 0.3212, 0.3187)	3
<i>Conversions</i>	4
<i>Details</i>	6
<i>Harmonies</i>	12
<i>Previews</i>	24
<i>Color Blindness Simulation</i>	27
<i>CSS Examples</i>	30

Color

Yxy(57.6860, 0.3212, 0.3187)

Conversions

Conversions Part 1

Format	Color
Hex	D6C3CC
RGB	214, 195, 204
RGB Percent	84%, 76%, 80%
CMY	0.1609, 0.2352, 0.2001
CMYK	0.00, 0.09, 0.05, 0.16
HSL	332°, 19%, 80%
HSV	332°, 9%, 84%
XYZ	58.1385, 57.6860, 65.1796
YIQ	201.7070, 8.4350, 6.8270

Conversions

Conversions Part 2

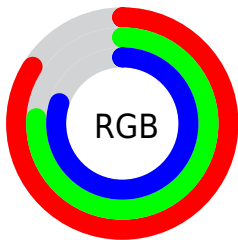
Format	Color
R _Y B	214, 195, 204
Decimal	14074828
CIE Lab	80.56, 8.21, -2.07
CIE LCh	81, 8.468, 345.867
Yxy	57.6860, 0.3212, 0.3187
Android (android.graphics.Color)	4292264908 (0xFFD6C3CC)
YUV	201.7070, 1.1304, 10.7810
Hunter-Lab	75.9513, 3.7218, 2.2847

Details

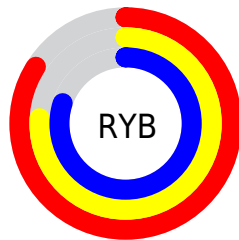
The Yxy color **57.6860, 0.3212, 0.3187** is a light color, and the websafe version is hex **CCCCCC**. A complement of this color would be **64.0960, 0.3050, 0.3395**, and the grayscale version is **58.8587, 0.3127, 0.3290**.

A 20% lighter version of the original color is **98.1008, 0.3128, 0.3261**, and **28.6227, 0.3231, 0.3153** is the 20% darker color. If you saturate the color by 10%, you get **48.2537, 0.3327, 0.3065**, and if you desaturate by 10%, it is **68.5367, 0.3117, 0.3303**.

Distribution



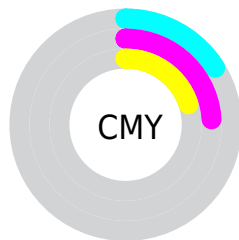
- Red (84%)
- Green (76%)
- Blue (80%)



- Red (84%)
- Yellow (76%)
- Blue (80%)



- Cyan (0%)
- Magenta (9%)
- Yellow (5%)
- Black (16%)



- Cyan (16%)
- Magenta (24%)
- Yellow (20%)

Brightness & Saturation Gradients

These gradients show how the Yxy color 57.6860, 0.3212, 0.3187 changes by changing the brightness by 10 percent. The first figure shows a shift by +10% for each color and the second figure -10%.

Similar to the brightness gradients but the following saturation gradients show a change of the Yxy color 57.6860, 0.3212, 0.3187 by changing the saturation by 10% instead.

■ 57.6860, 0.3212,
0.3187

■ 57.6860, 0.3212,
0.3187

416.0149, 0.3171,
0.3236

■ 41.5563, 0.3222,
0.3175

■ 101.4655, 0.3198,
0.3204

■ 28.7540, 0.3234,
0.3161

129.8840, 0.3192,
0.3211

■ 18.8948, 0.3250,
0.3142

163.1675, 0.3187,
0.3217

■ 11.5943, 0.3271,
0.3116

201.7005, 0.3183,
0.3222

■ 6.4681, 0.3301,
0.3080

245.8674, 0.3180,
0.3226

■ 3.1317, 0.3348,
0.3024

296.0525, 0.3177,

■ 1.2009, 0.3428,

0.3230

0.2930

352.6402, 0.3174,
0.3233

0.0624, 0.4858,
0.1167

0.0000, 0.0000,
0.0000

57.6860, 0.3212,
0.3187

57.6860, 0.3212,
0.3187

48.2537, 0.3327,
0.3065

68.5367, 0.3117,
0.3303

40.1732, 0.3465,
0.2938

80.8538, 0.3039,
0.3411

33.3839, 0.3629,
0.2812

91.9770, 0.2975,
0.3468

27.8176, 0.3822,
0.2693

92.6611, 0.2914,
0.3350

■ 23.3997, 0.4043,
0.2590

■ 93.0331, 0.2883,
0.3289

■ 20.0474, 0.4289,
0.2516

■ 17.6666, 0.4551,
0.2484

■ 16.1464, 0.4816,
0.2503

■ 15.3125, 0.5069,
0.2573

Harmonies

Analogous

The Analogous color harmony consists of three colors that are next to each other on the color wheel.



57.6860, 0.3101, 0.3124



57.6860, 0.3212, 0.3187



57.6860, 0.3301, 0.3277

Triad

The Triadic color harmony groups three colors that are evenly spaced from another and form a triangle on the color wheel.



57.6860, 0.3212, 0.3187



57.6860, 0.3255, 0.3483



57.6860, 0.2916, 0.3202

Complementary

The Complementary color scheme is a pair of colors which are on the opposite of each other on the color wheel.



57.6860, 0.3212, 0.3187



64.0960, 0.3050, 0.3395

Split Complementary

Split-complementary colors differ from the complementary color scheme. The scheme consists of three colors, the original color and two neighbors of the complement color.



57.6860, 0.2956, 0.3300



57.6860, 0.3212, 0.3187



57.6860, 0.3151, 0.3464

Square

The Square scheme is like the rectangle color scheme, but the four colors are evenly spaced on the color wheel.



57.6860, 0.3212, 0.3187



57.6860, 0.3326, 0.3448



57.6860, 0.3041, 0.3397



57.6860, 0.2931, 0.3130

Rectangle

The Rectangle color scheme consists of four colors that form a rectangle on the color wheel.



57.6860, 0.3212, 0.3187



57.6860, 0.3336, 0.3342



57.6860, 0.3041, 0.3397



57.6860, 0.2923, 0.3233

Sweetspot

The Sweet Spot groups the original color and five complimentary colors.



57.6885, 0.3212, 0.3187



94.9585, 0.3155, 0.3255



56.8437, 0.3066, 0.3069



20.0438, 0.3162, 0.3246



0.0000, 0.0000, 0.0000



21.4041, 0.3127, 0.3290

Same Dimension

The Same Dimension uses a secret algorithm to generate beautiful new colors.



57.6885, 0.3212, 0.3187



82.4740, 0.3236, 0.3160



57.4128, 0.3280, 0.3294



12.5175, 0.3218, 0.3180



9.2307, 0.5064, 0.2563



0.5734, 0.4660, 0.2341

Inverse Universe

The Inverse Universe completely reimagines the original color for something new.



57.6885, 0.3212, 0.3187



82.4740, 0.3236, 0.3160



64.3814, 0.2991, 0.3286



12.5175, 0.3218, 0.3180



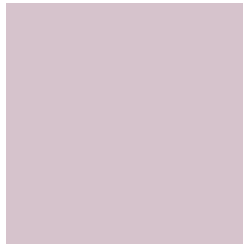
9.2307, 0.5064, 0.2563



0.5734, 0.4660, 0.2341

Previews

White Background



This preview shows how the Yxy color 57.6860, 0.3212, 0.3187 looks on a white background.

Color Contrast Check

Large Text (above 18pt) WCAG AA × Fail

Any Text WCAG AA × Fail

Large Text (above 18pt) WCAG AAA × Fail

Any Text WCAG AAA × Fail

Black Background



This preview shows how the Yxy color 57.6860, 0.3212, 0.3187 looks on a black background.

Color Contrast Check

Large Text (above 18pt) WCAG AA ✓ Pass

Any Text WCAG AA ✓ Pass

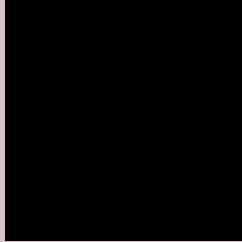
Large Text (above 18pt) WCAG AAA ✓ Pass

Any Text WCAG AAA ✓ Pass

If you want to check with other color combinations, try the [Color Contrast Checker](#).

Yxy 57.6860, 0.3212, 0.3187

Background



This preview shows how black text looks on a background with the Yxy color 57.6860, 0.3212, 0.3187.



This preview shows how white text looks on a background with the Yxy color 57.6860, 0.3212, 0.3187.

Color Blindness Simulation

Color vision deficiency is a very complex topic, and I could not describe the different causes any better than Wikipedia does, so if you want to learn more, you should check out their [article about color blindness](#).

Dichromacy



Original Color

57.6860, 0.3212, 0.3187

Protanopia

57.8596, 0.3100, 0.3207

Deuteranopia

57.6949, 0.3237, 0.3176



Tritanopia

57.6341, 0.3183, 0.3119

Trichromacy



Original Color

57.6860, 0.3212, 0.3187

Protanomaly

57.9178, 0.3139, 0.3208

Deuteranomaly

57.5421, 0.3229, 0.3176

Tritanomaly

57.5356, 0.3198, 0.3141

Monochromacy



Original Color

57.6860, 0.3212, 0.3187

Achromatopsia

59.0619, 0.3127, 0.3290

Achromatomaly

58.2805, 0.3153, 0.3243

CSS Examples

Text

The CSS property to change the color of the text to Yxy 57.6860, 0.3212, 0.3187 is called "color". The color property can be set on classes, ids or directly on the HTML element.

This example shows how text in the color `rgb(214, 195, 204)` looks like.

```
.text, #text, p{  
    color:rgb(214, 195, 204)  
}
```

If you want to add a text shadow in that color use the text-shadow property, you can generate a text shadow directly with our [CSS Text Shadow Generator](#).

Here you see how black text with a 4 pixel rgb(214, 195, 204) colored shadow looks like.

```
.shadow{ text-shadow: 4px 4px 2px rgb(214, 195, 204) }
```

Border

The CSS property to change the border of an element to Yxy 57.6860, 0.3212, 0.3187 is called "border". The border property can be set on classes, ids or directly on the HTML element.

This example shows the color as border, it can be applied via the CSS property "border" or "border-color".

```
.border, #border, table{ border:4px solid rgb(214, 195, 204) }
```

If only the border color should be changed use the property `border-color`.

```
.border{ border-color:rgb(214, 195, 204) }
```

If you want to add a box shadow in that color use:

Here you see how a box with a 4 pixel `rgb(214, 195, 204)` colored shadow looks like.

```
.boxshadow{ -moz-box-shadow:4px 4px 4px  
4px rgb(214, 195, 204); -webkit-box-  
shadow:4px 4px 4px 4px rgb(214, 195, 204);  
box-shadow:4px 4px 4px 4px rgb(214, 195,  
204) }
```


Background

The CSS property to change the background color of an element to Yxy 57.6860, 0.3212, 0.3187 is called "background". The background property can be set on classes, ids or directly on the HTML element.

```
.background, #background, body{  
background: rgb(214, 195, 204) }
```

If only the background color should be changed can be used:

```
.background{ background-color: rgb(214,  
195, 204) }
```

This example shows the color as background, it is applied via the CSS property "background".

To optimize and compress your CSS code, you can use our [online CSS compressor and optimizer](#) based on csstidy. If you want to create a linear or radial gradient as background or border, check our [CSS Gradient Generator](#).

Hey! You found this booklet interesting? Support Converting Colors with the new Membership Option!

The pro membership hides all ads, plus gives you double the colors in the color bucket, and more awesome pro features!

[Learn more, Memberships starting at \\$2.50/m!](#)

**Follow me
on Twitter!**

@ConvertingColor