

Converting Colors

Yxy(57.5430, 0.3377, 0.3293)

Have a look what the booklet for
Yxy(57.5430, 0.3377, 0.3293)
contains.

Yxy(57.6782, 0.3373, 0.3291)	3
Conversions	4
Details	6
Harmonies	12
Previews	24
Color Blindness Simulation	27
CSS Examples	30

Color

Yxy(57.6782, 0.3373, 0.3291)

Conversions

Conversions Part 1

Format	Color
Hex	DFC1C1
RGB	223, 193, 193
RGB Percent	87%, 76%, 76%
CMY	0.1257, 0.2430, 0.2431
CMYK	0.00, 0.13, 0.13, 0.13
HSL	0°, 32%, 82%
HSV	0°, 13%, 87%
XYZ	59.1153, 57.6782, 58.4669
YIQ	201.9700, 17.8800, 6.3600

Conversions

Conversions Part 2

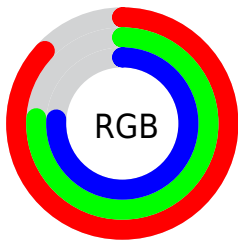
Format	Color
RYB	223, 193, 193
Decimal	14664129
CIELab	80.56, 10.59, 3.92
CIElCh	81, 11.297, 20.315
Yxy	57.6782, 0.3373, 0.3291
Android (android.graphics.Color)	4292854209 (0xFFDFC1C1)
YUV	201.9700, -4.4222, 18.4433
Hunter-Lab	75.9462, 6.0359, 7.5181

Details

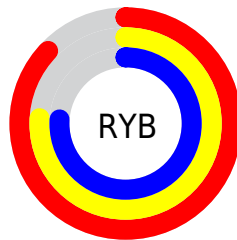
The Yxy color $57.6782, 0.3373, 0.3291$ is a light color, and the websafe version is hex `FFCCCC`. A complement of this color would be $69.3973, 0.2923, 0.3289$, and the grayscale version is $59.0613, 0.3127, 0.3290$.

A 20% lighter version of the original color is $95.8509, 0.3165, 0.3290$, and $28.6835, 0.3439, 0.3276$ is the 20% darker color. If you saturate the color by 10%, you get $47.6400, 0.3611, 0.3292$, and if you desaturate by 10%, it is $69.3549, 0.3183, 0.3290$.

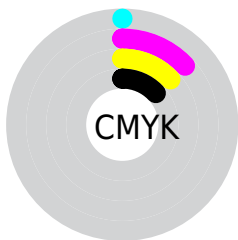
Distribution



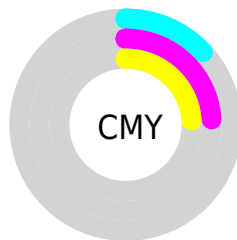
- Red (87%)
- Green (76%)
- Blue (76%)



- Red (87%)
- Yellow (76%)
- Blue (76%)



- Cyan (0%)
- Magenta (13%)
- Yellow (13%)
- Black (13%)




- Cyan (13%)
- Magenta (24%)
- Yellow (24%)

Brightness & Saturation Gradients


These gradients show how the Yxy color 57.6782, 0.3373, 0.3291 changes by changing the brightness by 10 percent. The first figure shows a shift by +10% for each color and the second figure -10%.

Similar to the brightness gradients but the following saturation gradients show a change of the Yxy color 57.6782, 0.3373, 0.3291 by changing the saturation by 10% instead.

 57.6782, 0.3373,
0.3291

 57.6782, 0.3373,
0.3291


415.9858, 0.3254,
0.3292

 41.5500, 0.3402,
0.3291


 101.4541, 0.3331,
0.3291

 28.7491, 0.3438,
0.3290


129.8706, 0.3314,
0.3292

 18.8911, 0.3485,
0.3289


163.1519, 0.3301,
0.3292

 11.5916, 0.3549,
0.3287

201.6826, 0.3289,
0.3292

 6.4662, 0.3641,
0.3283

245.8469, 0.3278,
0.3292

 3.1306, 0.3784,
0.3275

296.0293, 0.3269,

 1.2003, 0.4035,

0.3292

352.6141, 0.3261,
0.3292

0.3255

0.0619, 0.8368,
0.1632

0.0000, 0.0000,
0.0000

57.6782, 0.3373,
0.3291

57.6782, 0.3373,
0.3291

47.6400, 0.3611,
0.3292

69.3549, 0.3183,
0.3290

39.1598, 0.3907,
0.3293

82.7306, 0.3031,
0.3290

32.1618, 0.4269,
0.3294

94.4202, 0.2934,
0.3289

26.5610, 0.4696,
0.3296

■ 22.2637, 0.5171,
0.3297

■ 19.1646, 0.5645,
0.3299

■ 17.1425, 0.6046,
0.3300

■ 16.0503, 0.6305,
0.3300

■ 15.6845, 0.6400,
0.3300

Harmonies

Analogous

The Analogous color harmony consists of three colors that are next to each other on the color wheel.



57.6782, 0.3261, 0.3169



57.6782, 0.3373, 0.3291



57.6782, 0.3418, 0.3416

Triad

The Triadic color harmony groups three colors that are evenly spaced from another and form a triangle on the color wheel.



57.6782, 0.3373, 0.3291



57.6782, 0.3135, 0.3514



57.6782, 0.2876, 0.3068

Complementary

The Complementary color scheme is a pair of colors which are on the opposite of each other on the color wheel.



57.6782, 0.3373, 0.3291



69.3973, 0.2923, 0.3289

Split Complementary

Split-complementary colors differ from the complementary color scheme. The scheme consists of three colors, the original color and two neighbors of the complement color.



57.6782, 0.2845, 0.3154



57.6782, 0.3373, 0.3291



57.6782, 0.2992, 0.3415

Square

The Square scheme is like the rectangle color scheme, but the four colors are evenly spaced on the color wheel.



57.6782, 0.3373, 0.3291



57.6782, 0.3279, 0.3549



57.6782, 0.2887, 0.3282



57.6782, 0.2973, 0.3042

Rectangle

The Rectangle color scheme consists of four colors that form a rectangle on the color wheel.



57.6782, 0.3373, 0.3291



57.6782, 0.3403, 0.3484



57.6782, 0.2887, 0.3282



57.6782, 0.2858, 0.3090

Sweetspot

The Sweet Spot groups the original color and five complimentary colors.



57.6808, 0.3373, 0.3291



93.0297, 0.3193, 0.3290



59.1440, 0.3143, 0.2960



19.6406, 0.3206, 0.3290



0.0000, 0.0000, 0.0000



21.4041, 0.3127, 0.3290

Same Dimension

The Same Dimension uses a secret algorithm to generate beautiful new colors.



57.6808, 0.3373, 0.3291



74.3381, 0.3432, 0.3291



64.6295, 0.3350, 0.3459



13.7025, 0.3292, 0.3291



9.2277, 0.6400, 0.3300



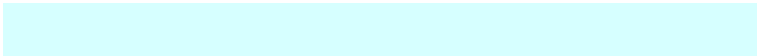
0.6403, 0.6398, 0.3302

Inverse Universe

The Inverse Universe completely reimagines the original color for something new.



69.3973, 0.2923, 0.3289



93.0431, 0.2884, 0.3289



61.7613, 0.2918, 0.3115



15.5702, 0.2982, 0.3289



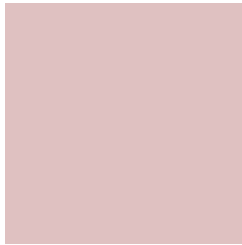
34.1025, 0.2246, 0.3285



2.3645, 0.2246, 0.3285

Previews

White Background



This preview shows how the Yxy color 57.6782, 0.3373, 0.3291 looks on a white background.

Color Contrast Check

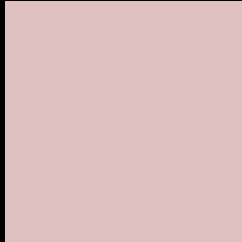
Large Text (above 18pt) WCAG AA × Fail

Any Text WCAG AA × Fail

Large Text (above 18pt) WCAG AAA × Fail

Any Text WCAG AAA × Fail

Black Background



This preview shows how the Yxy color 57.6782, 0.3373, 0.3291 looks on a black background.

Color Contrast Check

Large Text (above 18pt) WCAG AA ✓ Pass

Any Text WCAG AA ✓ Pass

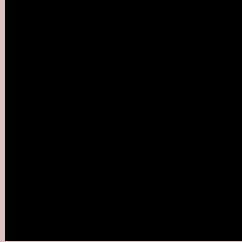
Large Text (above 18pt) WCAG AAA ✓ Pass

Any Text WCAG AAA ✓ Pass

If you want to check with other color combinations, try the [Color Contrast Checker](#).

Yxy 57.6782, 0.3373, 0.3291

Background



This preview shows how black text looks on a background with the Yxy color 57.6782, 0.3373, 0.3291.



This preview shows how white text looks on a background with the Yxy color 57.6782, 0.3373, 0.3291.

Color Blindness Simulation

Color vision deficiency is a very complex topic, and I could not describe the different causes any better than Wikipedia does, so if you want to learn more, you should check out their [article about color blindness](#).

Dichromacy



Original Color

57.6782, 0.3373, 0.3291

Protanopia

57.6697, 0.3189, 0.3326

Deuteranopia

57.5198, 0.3365, 0.3291



Tritanopia

57.7254, 0.3290, 0.3122

Trichromacy



Original Color

57.6782, 0.3373, 0.3291

Protanomaly

57.7215, 0.3254, 0.3314

Deuteranomaly

57.5198, 0.3365, 0.3291

Tritanomaly

57.7636, 0.3320, 0.3189

Monochromacy



Original Color

57.6782, 0.3373, 0.3291

Achromatopsia

59.0619, 0.3127, 0.3290

Achromatomaly

58.6720, 0.3214, 0.3290

CSS Examples

Text

The CSS property to change the color of the text to Yxy 57.6782, 0.3373, 0.3291 is called "color". The color property can be set on classes, ids or directly on the HTML element.

This example shows how text in the color `rgb(223, 193, 193)` looks like.

```
.text, #text, p{  
    color:rgb(223, 193, 193)  
}
```

If you want to add a text shadow in that color use the text-shadow property, you can generate a text shadow directly with our [CSS Text Shadow Generator](#).

Here you see how black text with a 4 pixel rgb(223, 193, 193) colored shadow looks like.

```
.shadow{ text-shadow: 4px 4px 2px rgb(223, 193, 193) }
```

Border

The CSS property to change the border of an element to Yxy 57.6782, 0.3373, 0.3291 is called "border". The border property can be set on classes, ids or directly on the HTML element.

This example shows the color as border, it can be applied via the CSS property "border" or "border-color".

```
.border, #border, table{ border:4px solid rgb(223, 193, 193) }
```

If only the border color should be changed use the property `border-color`.

```
.border{ border-color:rgb(223, 193, 193) }
```

If you want to add a box shadow in that color use:

Here you see how a box with a 4 pixel `rgb(223, 193, 193)` colored shadow looks like.

```
.boxshadow{ -moz-box-shadow:4px 4px 4px  
4px rgb(223, 193, 193); -webkit-box-  
shadow:4px 4px 4px 4px rgb(223, 193, 193);  
box-shadow:4px 4px 4px 4px rgb(223, 193,  
193) }
```


Background

The CSS property to change the background color of an element to Yxy 57.6782, 0.3373, 0.3291 is called "background". The background property can be set on classes, ids or directly on the HTML element.

```
.background, #background, body{  
background: rgb(223, 193, 193) }
```

If only the background color should be changed can be used:

```
.background{ background-color: rgb(223,  
193, 193) }
```

This example shows the color as background, it is applied via the CSS property "background".

To optimize and compress your CSS code, you can use our [online CSS compressor and optimizer](#) based on csstidy. If you want to create a linear or radial gradient as background or border, check our [CSS Gradient Generator](#).

Hey! You found this booklet interesting? Support Converting Colors with the new Membership Option!

The pro membership hides all ads, plus gives you double the colors in the color bucket, and more awesome pro features!

[Learn more, Memberships starting at \\$2.50/m!](#)

**Follow me
on Twitter!**

@ConvertingColor