

Converting Colors

Yxy(57.5629, 0.3903, 0.3462)

Have a look what the booklet for
Yxy(57.5629, 0.3903, 0.3462)
contains.

Yxy(57.4691, 0.3905, 0.3461)	3
Conversions	4
Details	6
Harmonies	12
Previews	24
Color Blindness Simulation	27
CSS Examples	30

Color

Yxy(57.4691, 0.3905, 0.3461)

Conversions

Conversions Part 1

Format	Color
Hex	FFB6A6
RGB	255, 182, 166
RGB Percent	100%, 71%, 65%
CMY	0.0001, 0.2862, 0.3491
CMYK	0.00, 0.29, 0.35, 0.00
HSL	11°, 100%, 83%
HSV	11°, 35%, 100%
XYZ	64.8416, 57.4691, 43.7370
YIQ	202.0030, 48.6440, 10.5000

Conversions

Conversions Part 2

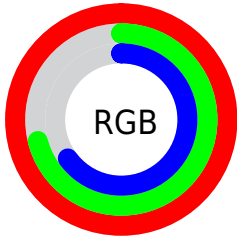
Format	Color
R _Y B	255, 186, 166
Decimal	16758438
CIE Lab	80.44, 24.46, 18.71
CIE LCh	80, 30.794, 37.421
Yxy	57.4691, 0.3905, 0.3461
Android (android.graphics.Color)	4294948518 (0xFFFFB6A6)
YUV	202.0030, -17.7495, 46.4784
Hunter-Lab	75.8084, 20.0128, 18.8590

Details

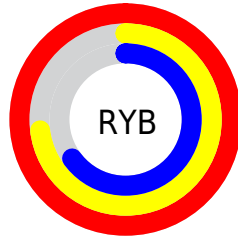
The Yxy color **57.4691, 0.3905, 0.3461** is a light color, and the websafe version is hex **FFCCCC**. A complement of this color would be **77.0108, 0.2609, 0.3109**, and the grayscale version is **59.1549, 0.3127, 0.3290**.

A 20% lighter version of the original color is **87.6295, 0.3350, 0.3459**, and **28.6512, 0.4105, 0.3495** is the 20% darker color. If you saturate the color by 10%, you get **48.6949, 0.4235, 0.3509**, and if you desaturate by 10%, it is **67.7118, 0.3627, 0.3410**.

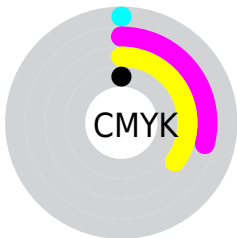
Distribution



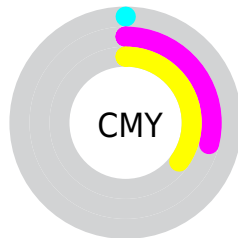
- Red (100%)
- Green (71%)
- Blue (65%)



- Red (100%)
- Yellow (73%)
- Blue (65%)



- Cyan (0%)
- Magenta (29%)
- Yellow (35%)
- Black (0%)




- Cyan (0%)
- Magenta (29%)
- Yellow (35%)

Brightness & Saturation Gradients

These gradients show how the Yxy color 57.4691, 0.3905, 0.3461 changes by changing the brightness by 10 percent. The first figure shows a shift by +10% for each color and the second figure -10%.

Similar to the brightness gradients but the following saturation gradients show a change of the Yxy color 57.4691, 0.3905, 0.3461 by changing the saturation by 10% instead.

 57.4691, 0.3905,
0.3461


 57.4691, 0.3905,
0.3461


415.2048, 0.3526,
0.3390

 41.3820, 0.3996,
0.3474


 101.1493, 0.3770,
0.3439

 28.6177, 0.4111,
0.3489


 129.5113, 0.3718,
0.3429

 18.7918, 0.4260,
0.3505

162.7336, 0.3674,
0.3421

 11.5199, 0.4460,
0.3520

201.2007, 0.3636,
0.3414

 6.4177, 0.4741,
0.3530

245.2969, 0.3603,
0.3407

 3.1007, 0.5158,
0.3516

295.4068, 0.3574,

 1.1845, 0.6300,

0.3401

0.3700

351.9146, 0.3549,
0.3395

0.0490, 0.9292,
0.0708

0.0000, 0.0000,
0.0000

57.4691, 0.3905,
0.3461

57.4691, 0.3905,
0.3461

48.6949, 0.4235,
0.3509

67.7118, 0.3627,
0.3410

41.3136, 0.4616,
0.3549

79.4778, 0.3397,
0.3360

35.2551, 0.5035,
0.3572

92.8290, 0.3207,
0.3312

30.4399, 0.5461,
0.3570

99.9951, 0.3127,
0.3290

■ 26.7796, 0.5844,
0.3534

■ 24.1734, 0.6132,
0.3467

■ 23.2075, 0.6237,
0.3430

Harmonies

Analogous

The Analogous color harmony consists of three colors that are next to each other on the color wheel.



57.4691, 0.3688, 0.3137



57.4691, 0.3905, 0.3461



57.4691, 0.3895, 0.3768

Triad

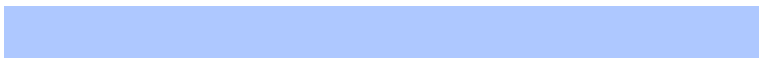
The Triadic color harmony groups three colors that are evenly spaced from another and form a triangle on the color wheel.



57.4691, 0.3905, 0.3461



57.4691, 0.2910, 0.3786



57.4691, 0.2585, 0.2643

Complementary

The Complementary color scheme is a pair of colors which are on the opposite of each other on the color wheel.



57.4691, 0.3905, 0.3461



77.0108, 0.2609, 0.3109

Split Complementary

Split-complementary colors differ from the complementary color scheme. The scheme consists of three colors, the original color and two neighbors of the complement color.



57.4691, 0.2408, 0.2762



57.4691, 0.3905, 0.3461



57.4691, 0.2585, 0.3419

Square

The Square scheme is like the rectangle color scheme, but the four colors are evenly spaced on the color wheel.



57.4691, 0.3905, 0.3461



57.4691, 0.3307, 0.3995



57.4691, 0.2407, 0.3038



57.4691, 0.2910, 0.2682

Rectangle

The Rectangle color scheme consists of four colors that form a rectangle on the color wheel.



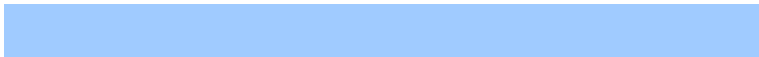
57.4691, 0.3905, 0.3461



57.4691, 0.3766, 0.3922



57.4691, 0.2407, 0.3038



57.4691, 0.2507, 0.2665

Sweetspot

The Sweet Spot groups the original color and five complimentary colors.



57.4718, 0.3905, 0.3461



85.8468, 0.3299, 0.3336



54.8167, 0.3287, 0.2552



17.9770, 0.3326, 0.3343



0.0000, 0.0000, 0.0000



21.4041, 0.3127, 0.3290

Same Dimension

The Same Dimension uses a secret algorithm to generate beautiful new colors.



57.4718, 0.3905, 0.3461



51.1107, 0.4134, 0.3496



78.0235, 0.3750, 0.3895



18.5166, 0.3290, 0.3334



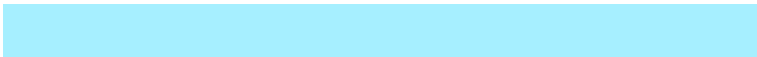
12.2810, 0.6214, 0.3448



1.3325, 0.6016, 0.3605

Inverse Universe

The Inverse Universe completely reimagines the original color for something new.



77.0108, 0.2609, 0.3109



73.3171, 0.2516, 0.3067



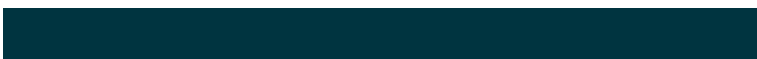
54.6393, 0.2539, 0.2597



19.8914, 0.2980, 0.3246



27.8059, 0.2084, 0.2702



2.8460, 0.2105, 0.2776

Previews

White Background



This preview shows how the Yxy color 57.4691, 0.3905, 0.3461 looks on a white background.

Color Contrast Check

Large Text (above 18pt) WCAG AA × Fail

Any Text WCAG AA × Fail

Large Text (above 18pt) WCAG AAA × Fail

Any Text WCAG AAA × Fail

Black Background



This preview shows how the Yxy color 57.4691, 0.3905, 0.3461 looks on a black background.

Color Contrast Check

Large Text (above 18pt) WCAG AA ✓ Pass

Any Text WCAG AA ✓ Pass

Large Text (above 18pt) WCAG AAA ✓ Pass

Any Text WCAG AAA ✓ Pass

If you want to check with other color combinations, try the [Color Contrast Checker](#).

Yxy 57.4691, 0.3905, 0.3461

Background



This preview shows how black text looks on a background with the Yxy color 57.4691, 0.3905, 0.3461.



This preview shows how white text looks on a background with the Yxy color 57.4691, 0.3905, 0.3461.

Color Blindness Simulation

Color vision deficiency is a very complex topic, and I could not describe the different causes any better than Wikipedia does, so if you want to learn more, you should check out their [article about color blindness](#).

Dichromacy



Original Color

57.4691, 0.3905, 0.3461

Protanopia

57.4973, 0.3388, 0.3577

Deuteranopia

57.5354, 0.3689, 0.3607



Tritanopia

57.3060, 0.3683, 0.3156

Trichromacy



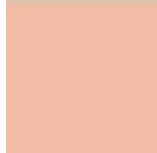
Original Color

57.4691, 0.3905, 0.3461



Protanomaly

57.2872, 0.3568, 0.3532



Deuteranomaly

57.2083, 0.3762, 0.3545



Tritanomaly

57.3214, 0.3760, 0.3260

Monochromacy



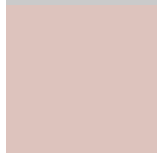
Original Color

57.4691, 0.3905, 0.3461



Achromatopsia

59.0619, 0.3127, 0.3290



Achromatomaly

58.0765, 0.3385, 0.3360

CSS Examples

Text

The CSS property to change the color of the text to Yxy 57.4691, 0.3905, 0.3461 is called "color". The color property can be set on classes, ids or directly on the HTML element.

This example shows how text in the color `rgb(255, 182, 166)` looks like.

```
.text, #text, p{  
    color:rgb(255, 182, 166)  
}
```

If you want to add a text shadow in that color use the text-shadow property, you can generate a text shadow directly with our [CSS Text Shadow Generator](#).

Here you see how black text with a 4 pixel rgb(255, 182, 166) colored shadow looks like.

```
.shadow{ text-shadow: 4px 4px 2px rgb(255, 182, 166) }
```

Border

The CSS property to change the border of an element to Yxy 57.4691, 0.3905, 0.3461 is called "border". The border property can be set on classes, ids or directly on the HTML element.

This example shows the color as border, it can be applied via the CSS property "border" or "border-color".

```
.border, #border, table{ border:4px solid rgb(255, 182, 166) }
```

If only the border color should be changed use the property border-color.

```
.border{ border-color:rgb(255, 182, 166) }
```

If you want to add a box shadow in that color use:

Here you see how a box with a 4 pixel rgb(255, 182, 166) colored shadow looks like.

```
.boxshadow{ -moz-box-shadow:4px 4px 4px  
4px rgb(255, 182, 166); -webkit-box-  
shadow:4px 4px 4px 4px rgb(255, 182, 166);  
box-shadow:4px 4px 4px 4px rgb(255, 182,  
166) }
```


Background

The CSS property to change the background color of an element to Yxy 57.4691, 0.3905, 0.3461 is called "background". The background property can be set on classes, ids or directly on the HTML element.

```
.background, #background, body{  
background: rgb(255, 182, 166) }
```

If only the background color should be changed can be used:

```
.background{ background-color: rgb(255,  
182, 166) }
```

This example shows the color as background, it is applied via the CSS property "background".

To optimize and compress your CSS code, you can use our [online CSS compressor and optimizer](#) based on csstidy. If you want to create a linear or radial gradient as background or border, check our [CSS Gradient Generator](#).

Hey! You found this booklet interesting? Support Converting Colors with the new Membership Option!

The pro membership hides all ads, plus gives you double the colors in the color bucket, and more awesome pro features!

[Learn more, Memberships starting at \\$2.50/m!](#)

**Follow me
on Twitter!**

@ConvertingColor