

Converting Colors

$Yxy(57.5895, 0.3389, 0.3314)$

Have a look what the booklet for
Yxy(57.5895, 0.3389, 0.3314)
contains.

Yxy(57.5895, 0.3389, 0.3314)	3
Conversions	4
Details	6
Harmonies	12
Previews	24
Color Blindness Simulation	27
CSS Examples	30

Color

Yxy(57.5895, 0.3389, 0.3314)

Conversions

Conversions Part 1

Format	Color
Hex	DFC1BF
RGB	223, 193, 191
RGB Percent	87%, 76%, 75%
CMY	0.1257, 0.2430, 0.2510
CMYK	0.00, 0.13, 0.14, 0.13
HSL	4°, 33%, 81%
HSV	4°, 14%, 87%
XYZ	58.8928, 57.5895, 57.2941
YIQ	201.7420, 18.5220, 5.7380

Conversions

Conversions Part 2

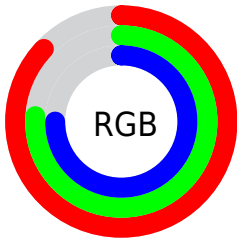
Format	Color
R _Y B	223, 193, 191
Decimal	14664127
CIE Lab	80.51, 10.27, 4.93
CIE LCh	81, 11.394, 25.643
Yxy	57.5895, 0.3389, 0.3314
Android (android.graphics.Color)	4292854207 (0xFFDFC1BF)
YUV	201.7420, -5.2958, 18.6433
Hunter-Lab	75.8877, 5.7217, 8.3584

Details

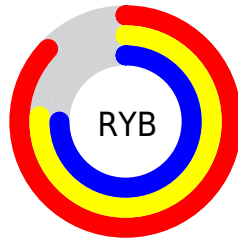
The Yxy color $57.5895, 0.3389, 0.3314$ is a light color, and the websafe version is hex `FFCCCC`. A complement of this color would be $68.0674, 0.2909, 0.3266$, and the grayscale version is $58.9167, 0.3127, 0.3290$.

A 20% lighter version of the original color is $95.7268, 0.3177, 0.3309$, and $28.6250, 0.3461, 0.3306$ is the 20% darker color. If you saturate the color by 10%, you get $48.0956, 0.3626, 0.3332$, and if you desaturate by 10%, it is $68.5406, 0.3198, 0.3297$.

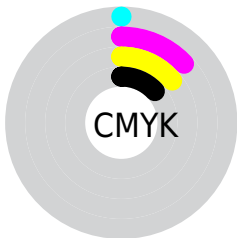
Distribution



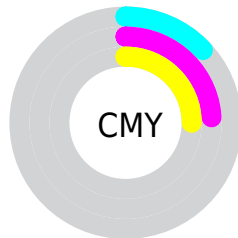
- Red (87%)
- Green (76%)
- Blue (75%)



- Red (87%)
- Yellow (76%)
- Blue (75%)



- Cyan (0%)
- Magenta (13%)
- Yellow (14%)
- Black (13%)





- Cyan (13%)
- Magenta (24%)
- Yellow (25%)

Brightness & Saturation Gradients


These gradients show how the Yxy color 57.5895, 0.3389, 0.3314 changes by changing the brightness by 10 percent. The first figure shows a shift by +10% for each color and the second figure -10%.


Similar to the brightness gradients but the following saturation gradients show a change of the Yxy color 57.5895, 0.3389, 0.3314 by changing the saturation by 10% instead.


 57.5895, 0.3389,
0.3314

 57.5895, 0.3389,
0.3314


415.6546, 0.3262,
0.3304

 41.4787, 0.3420,
0.3316


 101.3248, 0.3344,
0.3311

 28.6933, 0.3458,
0.3319


129.7182, 0.3326,
0.3309

 18.8490, 0.3509,
0.3322


162.9745, 0.3312,
0.3308

 11.5612, 0.3577,
0.3325

201.4782, 0.3299,
0.3307

 6.4456, 0.3675,
0.3329

245.6137, 0.3288,
0.3306

 3.1179, 0.3828,
0.3332

295.7653, 0.3278,

 1.1936, 0.4098,

0.3305

352.3175, 0.3270,
0.3304

0.3330

0.0565, 0.8435,
0.1565

0.0000, 0.0000,
0.0000

57.5895, 0.3389,
0.3314

57.5895, 0.3389,
0.3314

48.0956, 0.3626,
0.3332

68.5406, 0.3198,
0.3297

39.9901, 0.3917,
0.3351

80.9986, 0.3044,
0.3281

33.2105, 0.4269,
0.3368

94.4202, 0.2934,
0.3289

27.6859, 0.4682,
0.3382

■ 23.3394, 0.5139,
0.3389

■ 20.0854, 0.5599,
0.3386

■ 17.8266, 0.5997,
0.3369

■ 16.4485, 0.6269,
0.3342

■ 16.0000, 0.6363,
0.3330

Harmonies

Analogous

The Analogous color harmony consists of three colors that are next to each other on the color wheel.



57.5895, 0.3286, 0.3188



57.5895, 0.3389, 0.3314



57.5895, 0.3420, 0.3437

Triad

The Triadic color harmony groups three colors that are evenly spaced from another and form a triangle on the color wheel.



57.5895, 0.3389, 0.3314



57.5895, 0.3109, 0.3503



57.5895, 0.2887, 0.3056

Complementary

The Complementary color scheme is a pair of colors which are on the opposite of each other on the color wheel.



57.5895, 0.3389, 0.3314



68.0674, 0.2909, 0.3266

Split Complementary

Split-complementary colors differ from the complementary color scheme. The scheme consists of three colors, the original color and two neighbors of the complement color.



57.5895, 0.2842, 0.3134



57.5895, 0.3389, 0.3314



57.5895, 0.2968, 0.3394

Square

The Square scheme is like the rectangle color scheme, but the four colors are evenly spaced on the color wheel.



57.5895, 0.3389, 0.3314



57.5895, 0.3256, 0.3551



57.5895, 0.2872, 0.3257



57.5895, 0.2995, 0.3042

Rectangle

The Rectangle color scheme consists of four colors that form a rectangle on the color wheel.



57.5895, 0.3389, 0.3314



57.5895, 0.3396, 0.3501



57.5895, 0.2872, 0.3257



57.5895, 0.2864, 0.3076

Sweetspot

The Sweet Spot groups the original color and five complimentary colors.



57.5921, 0.3389, 0.3314



93.4178, 0.3193, 0.3296



58.1757, 0.3156, 0.2954



19.7383, 0.3206, 0.3298



0.0000, 0.0000, 0.0000



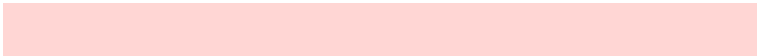
21.4041, 0.3127, 0.3290

Same Dimension

The Same Dimension uses a secret algorithm to generate beautiful new colors.



57.5921, 0.3389, 0.3314



74.2982, 0.3450, 0.3319



64.8303, 0.3364, 0.3488



13.8400, 0.3291, 0.3306



9.4686, 0.6352, 0.3338



0.7064, 0.6215, 0.3447

Inverse Universe

The Inverse Universe completely reimagines the original color for something new.



68.0674, 0.2909, 0.3266



90.9350, 0.2868, 0.3261



60.2403, 0.2903, 0.3083



15.4149, 0.2982, 0.3274



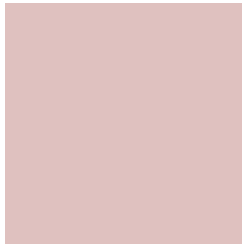
29.9479, 0.2192, 0.3091



2.1217, 0.2201, 0.3123

Previews

White Background



This preview shows how the Yxy color 57.5895, 0.3389, 0.3314 looks on a white background.

Color Contrast Check

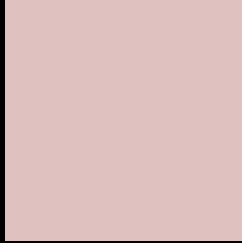
Large Text (above 18pt) WCAG AA × Fail

Any Text WCAG AA × Fail

Large Text (above 18pt) WCAG AAA × Fail

Any Text WCAG AAA × Fail

Black Background



This preview shows how the Yxy color 57.5895, 0.3389, 0.3314 looks on a black background.

Color Contrast Check

Large Text (above 18pt) WCAG AA ✓ Pass

Any Text WCAG AA ✓ Pass

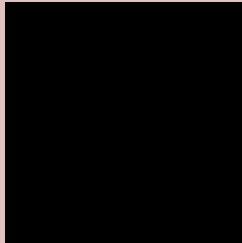
Large Text (above 18pt) WCAG AAA ✓ Pass

Any Text WCAG AAA ✓ Pass

If you want to check with other color combinations, try the [Color Contrast Checker](#).

Yxy 57.5895, 0.3389, 0.3314

Background



This preview shows how black text looks on a background with the Yxy color 57.5895, 0.3389, 0.3314.

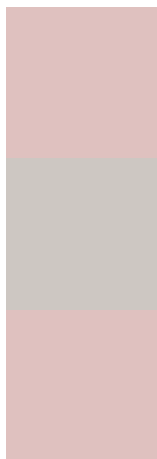


This preview shows how white text looks on a background with the Yxy color 57.5895, 0.3389, 0.3314.

Color Blindness Simulation

Color vision deficiency is a very complex topic, and I could not describe the different causes any better than Wikipedia does, so if you want to learn more, you should check out their [article about color blindness](#).

Dichromacy



Original Color

57.5895, 0.3389, 0.3314

Protanopia

57.7210, 0.3211, 0.3350

Deuteranopia

57.5895, 0.3389, 0.3314



Tritanopia

57.7254, 0.3290, 0.3122

Trichromacy



Original Color

57.5895, 0.3389, 0.3314

Protanomaly

57.7798, 0.3277, 0.3337

Deuteranomaly

57.5895, 0.3389, 0.3314

Tritanomaly

57.7636, 0.3320, 0.3189

Monochromacy



Original Color

57.5895, 0.3389, 0.3314

Achromatopsia

59.0619, 0.3127, 0.3290

Achromatomaly

58.6257, 0.3221, 0.3302

CSS Examples

Text

The CSS property to change the color of the text to Yxy 57.5895, 0.3389, 0.3314 is called "color". The color property can be set on classes, ids or directly on the HTML element.

This example shows how text in the color `rgb(223, 193, 191)` looks like.

```
.text, #text, p{  
    color:rgb(223, 193, 191)  
}
```

If you want to add a text shadow in that color use the text-shadow property, you can generate a text shadow directly with our [CSS Text Shadow Generator](#).

Here you see how black text with a 4 pixel rgb(223, 193, 191) colored shadow looks like.

```
.shadow{ text-shadow: 4px 4px 2px rgb(223, 193, 191) }
```

Border

The CSS property to change the border of an element to Yxy 57.5895, 0.3389, 0.3314 is called "border". The border property can be set on classes, ids or directly on the HTML element.

This example shows the color as border, it can be applied via the CSS property "border" or "border-color".

```
.border, #border, table{ border:4px solid rgb(223, 193, 191) }
```

If only the border color should be changed use the property `border-color`.

```
.border{ border-color:rgb(223, 193, 191) }
```

If you want to add a box shadow in that color use:

Here you see how a box with a 4 pixel `rgb(223, 193, 191)` colored shadow looks like.

```
.boxshadow{ -moz-box-shadow:4px 4px 4px  
4px rgb(223, 193, 191); -webkit-box-  
shadow:4px 4px 4px 4px rgb(223, 193, 191);  
box-shadow:4px 4px 4px 4px rgb(223, 193,  
191) }
```


Background

The CSS property to change the background color of an element to Yxy 57.5895, 0.3389, 0.3314 is called "background". The background property can be set on classes, ids or directly on the HTML element.

```
.background, #background, body{  
background: rgb(223, 193, 191) }
```

If only the background color should be changed can be used:

```
.background{ background-color: rgb(223,  
193, 191) }
```

This example shows the color as background, it is applied via the CSS property "background".

To optimize and compress your CSS code, you can use our [online CSS compressor and optimizer](#) based on csstidy. If you want to create a linear or radial gradient as background or border, check our [CSS Gradient Generator](#).

Hey! You found this booklet interesting? Support Converting Colors with the new Membership Option!

The pro membership hides all ads, plus gives you double the colors in the color bucket, and more awesome pro features!

[Learn more, Memberships starting at \\$2.50/m!](#)

**Follow me
on Twitter!**

@ConvertingColor