

Converting Colors

Yxy(57.5969, 0.3268, 0.3264)

Have a look what the booklet for
Yxy(57.5969, 0.3268, 0.3264)
contains.

Yxy(57.5085, 0.3273, 0.3267)	3
Conversions	4
Details	6
Harmonies	12
Previews	24
Color Blindness Simulation	27
CSS Examples	30

Color

Yxy(57.5085, 0.3273, 0.3267)

Conversions

Conversions Part 1

Format	Color
Hex	D7C3C5
RGB	215, 195, 197
RGB Percent	84%, 76%, 77%
CMY	0.1570, 0.2352, 0.2273
CMYK	0.00, 0.09, 0.08, 0.16
HSL	354°, 20%, 80%
HSV	354°, 9%, 84%
XYZ	57.6141, 57.5085, 60.9058
YIQ	201.2080, 11.2780, 4.8620

Conversions

Conversions Part 2

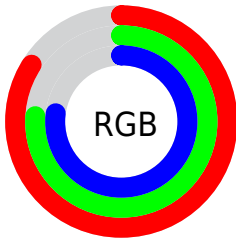
Format	Color
R _Y B	215, 195, 197
Decimal	14140357
CIE Lab	80.46, 7.36, 1.53
CIE LCh	80, 7.516, 11.737
Yxy	57.5085, 0.3273, 0.3267
Android (android.graphics.Color)	4292330437 (0xFFD7C3C5)
YUV	201.2080, -2.0745, 12.0956
Hunter-Lab	75.8344, 2.9028, 5.4657

Details

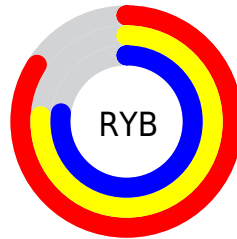
The Yxy color **57.5085, 0.3273, 0.3267** is a light color, and the websafe version is hex **CCCCCC**. A complement of this color would be **64.9921, 0.2998, 0.3313**, and the grayscale version is **58.5528, 0.3127, 0.3290**.

A 20% lighter version of the original color is **98.0366, 0.3134, 0.3271**, and **28.5065, 0.3314, 0.3260** is the 20% darker color. If you saturate the color by 10%, you get **47.7305, 0.3467, 0.3241**, and if you desaturate by 10%, it is **68.7919, 0.3117, 0.3292**.

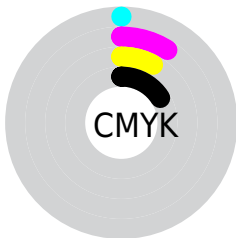
Distribution



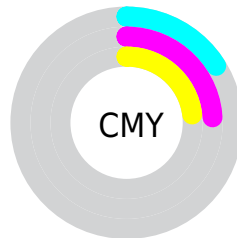
- Red (84%)
- Green (76%)
- Blue (77%)



- Red (84%)
- Yellow (76%)
- Blue (77%)



- Cyan (0%)
- Magenta (9%)
- Yellow (8%)
- Black (16%)




- Cyan (16%)
- Magenta (24%)
- Yellow (23%)

Brightness & Saturation Gradients


These gradients show how the Yxy color 57.5085, 0.3273, 0.3267 changes by changing the brightness by 10 percent. The first figure shows a shift by +10% for each color and the second figure -10%.


Similar to the brightness gradients but the following saturation gradients show a change of the Yxy color 57.5085, 0.3273, 0.3267 by changing the saturation by 10% instead.


 57.5085, 0.3273,
0.3267

 57.5085, 0.3273,
0.3267


415.3520, 0.3202,
0.3278

 41.4136, 0.3290,
0.3264


 101.2068, 0.3248,
0.3271

 28.6424, 0.3311,
0.3261


129.5790, 0.3238,
0.3273

 18.8105, 0.3339,
0.3256


162.8124, 0.3230,
0.3274

 11.5334, 0.3377,
0.3249

201.2915, 0.3223,
0.3275

 6.4268, 0.3431,
0.3240

245.4006, 0.3217,
0.3276

 3.1063, 0.3515,
0.3224

295.5241, 0.3212,

 1.1875, 0.3664,

0.3277

0.3195

352.0465, 0.3207,
0.3278

0.0515, 0.8163,
0.1837

0.0000, 0.0000,
0.0000

57.5085, 0.3273,
0.3267

57.5085, 0.3273,
0.3267

47.7305, 0.3467,
0.3241

68.7919, 0.3117,
0.3292

39.3871, 0.3708,
0.3213

81.6327, 0.2992,
0.3314

32.4130, 0.4005,
0.3187

93.1825, 0.2888,
0.3289

26.7350, 0.4362,
0.3164

93.1829, 0.2888,
0.3289

■ 22.2731, 0.4776,
0.3148

■ 18.9383, 0.5225,
0.3146

■ 16.6296, 0.5666,
0.3162

■ 15.2276, 0.6035,
0.3197

■ 14.5387, 0.6283,
0.3240

Harmonies

Analogous

The Analogous color harmony consists of three colors that are next to each other on the color wheel.



57.5085, 0.3190, 0.3189



57.5085, 0.3273, 0.3267



57.5085, 0.3317, 0.3352

Triad

The Triadic color harmony groups three colors that are evenly spaced from another and form a triangle on the color wheel.



57.5085, 0.3273, 0.3267



57.5085, 0.3162, 0.3450



57.5085, 0.2948, 0.3155

Complementary

The Complementary color scheme is a pair of colors which are on the opposite of each other on the color wheel.



57.5085, 0.3273, 0.3267



64.9921, 0.2998, 0.3313

Split Complementary

Split-complementary colors differ from the complementary color scheme. The scheme consists of three colors, the original color and two neighbors of the complement color.



57.5085, 0.2941, 0.3223



57.5085, 0.3273, 0.3267



57.5085, 0.3063, 0.3395

Square

The Square scheme is like the rectangle color scheme, but the four colors are evenly spaced on the color wheel.



57.5085, 0.3273, 0.3267



57.5085, 0.3252, 0.3459



57.5085, 0.2983, 0.3311



57.5085, 0.3002, 0.3124

Rectangle

The Rectangle color scheme consists of four colors that form a rectangle on the color wheel.



57.5085, 0.3273, 0.3267



57.5085, 0.3318, 0.3403



57.5085, 0.2983, 0.3311



57.5085, 0.2940, 0.3174

Sweetspot

The Sweet Spot groups the original color and five complimentary colors.



57.5110, 0.3273, 0.3267



94.7809, 0.3172, 0.3283



58.0332, 0.3120, 0.3062



19.9960, 0.3184, 0.3281



0.0000, 0.0000, 0.0000



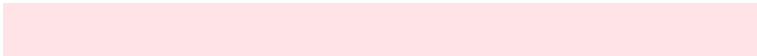
21.4041, 0.3127, 0.3290

Same Dimension

The Same Dimension uses a secret algorithm to generate beautiful new colors.



57.5110, 0.3273, 0.3267



81.8722, 0.3305, 0.3262



60.9365, 0.3279, 0.3379



12.4410, 0.3275, 0.3267



8.6825, 0.6275, 0.3230



0.5308, 0.5949, 0.3051

Inverse Universe

The Inverse Universe completely reimagines the original color for something new.



57.5110, 0.3273, 0.3267



81.8722, 0.3305, 0.3262



61.2898, 0.2984, 0.3200



12.4410, 0.3275, 0.3267



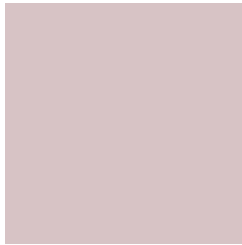
8.6825, 0.6275, 0.3230



0.5308, 0.5949, 0.3051

Previews

White Background



This preview shows how the Yxy color 57.5085, 0.3273, 0.3267 looks on a white background.

Color Contrast Check

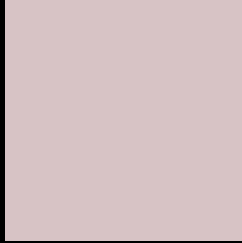
Large Text (above 18pt) WCAG AA × Fail

Any Text WCAG AA × Fail

Large Text (above 18pt) WCAG AAA × Fail

Any Text WCAG AAA × Fail

Black Background



This preview shows how the Yxy color 57.5085, 0.3273, 0.3267 looks on a black background.

Color Contrast Check

Large Text (above 18pt) WCAG AA ✓ Pass

Any Text WCAG AA ✓ Pass

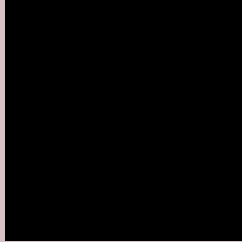
Large Text (above 18pt) WCAG AAA ✓ Pass

Any Text WCAG AAA ✓ Pass

If you want to check with other color combinations, try the [Color Contrast Checker](#).

Yxy 57.5085, 0.3273, 0.3267

Background



This preview shows how black text looks on a background with the Yxy color 57.5085, 0.3273, 0.3267.



This preview shows how white text looks on a background with the Yxy color 57.5085, 0.3273, 0.3267.

Color Blindness Simulation

Color vision deficiency is a very complex topic, and I could not describe the different causes any better than Wikipedia does, so if you want to learn more, you should check out their [article about color blindness](#).

Dichromacy



Original Color

57.5085, 0.3273, 0.3267

Protanopia

57.6669, 0.3159, 0.3290

Deuteranopia

57.3868, 0.3317, 0.3245



Tritanopia

57.4457, 0.3207, 0.3119

Trichromacy



Original Color

57.5085, 0.3273, 0.3267

Protanomaly

57.7308, 0.3198, 0.3290

Deuteranomaly

57.5202, 0.3299, 0.3256

Tritanomaly

57.5421, 0.3229, 0.3176

Monochromacy



Original Color

57.5085, 0.3273, 0.3267

Achromatopsia

58.4078, 0.3127, 0.3290

Achromatomaly

58.1388, 0.3175, 0.3278

CSS Examples

Text

The CSS property to change the color of the text to Yxy 57.5085, 0.3273, 0.3267 is called "color". The color property can be set on classes, ids or directly on the HTML element.

This example shows how text in the color `rgb(215, 195, 197)` looks like.

```
.text, #text, p{  
    color:rgb(215, 195, 197)  
}
```

If you want to add a text shadow in that color use the text-shadow property, you can generate a text shadow directly with our [CSS Text Shadow Generator](#).

Here you see how black text with a 4 pixel rgb(215, 195, 197) colored shadow looks like.

```
.shadow{ text-shadow: 4px 4px 2px rgb(215, 195, 197) }
```

Border

The CSS property to change the border of an element to Yxy 57.5085, 0.3273, 0.3267 is called "border". The border property can be set on classes, ids or directly on the HTML element.

This example shows the color as border, it can be applied via the CSS property "border" or "border-color".

```
.border, #border, table{ border:4px solid rgb(215, 195, 197) }
```

If only the border color should be changed use the property `border-color`.

```
.border{ border-color:rgb(215, 195, 197) }
```

If you want to add a box shadow in that color use:

Here you see how a box with a 4 pixel `rgb(215, 195, 197)` colored shadow looks like.

```
.boxshadow{ -moz-box-shadow:4px 4px 4px  
4px rgb(215, 195, 197); -webkit-box-  
shadow:4px 4px 4px 4px rgb(215, 195, 197);  
box-shadow:4px 4px 4px 4px rgb(215, 195,  
197) }
```


Background

The CSS property to change the background color of an element to Yxy 57.5085, 0.3273, 0.3267 is called "background". The background property can be set on classes, ids or directly on the HTML element.

```
.background, #background, body{  
background: rgb(215, 195, 197) }
```

If only the background color should be changed can be used:

```
.background{ background-color: rgb(215,  
195, 197) }
```

This example shows the color as background, it is applied via the CSS property "background".

To optimize and compress your CSS code, you can use our [online CSS compressor and optimizer](#) based on csstidy. If you want to create a linear or radial gradient as background or border, check our [CSS Gradient Generator](#).

Hey! You found this booklet interesting? Support Converting Colors with the new Membership Option!

The pro membership hides all ads, plus gives you double the colors in the color bucket, and more awesome pro features!

[Learn more, Memberships starting at \\$2.50/m!](#)

**Follow me
on Twitter!**

@ConvertingColor