

Converting Colors

Yxy(57.6061, 0.4335, 0.3555)

Have a look what the booklet for
Yxy(57.6061, 0.4335, 0.3555)
contains.

Yxy(52.8094, 0.4138, 0.3576)	3
<i>Conversions</i>	4
<i>Details</i>	6
<i>Harmonies</i>	12
<i>Previews</i>	24
<i>Color Blindness Simulation</i>	27
<i>CSS Examples</i>	30

Color

Yxy(52.8094, 0.4138, 0.3576)

Conversions

Conversions Part 1

Format	Color
Hex	FFAC91
RGB	255, 172, 145
RGB Percent	100%, 67%, 57%
CMY	0.0000, 0.3255, 0.4314
CMYK	0.00, 0.33, 0.43, 0.00
HSL	15°, 100%, 78%
HSV	15°, 43%, 100%
XYZ	61.1089, 52.8094, 33.7590
YIQ	193.7390, 58.1350, 9.1990

Conversions

Conversions Part 2

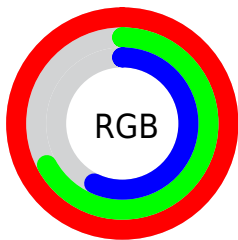
Format	Color
R _Y B	255, 181, 145
Decimal	16755857
CIE Lab	77.76, 27.40, 26.29
CIE LCh	78, 37.973, 43.824
Yxy	52.8094, 0.4138, 0.3576
Android (android.graphics.Color)	4294945937 (0xFFFFAC91)
YUV	193.7390, -24.0283, 53.7259
Hunter-Lab	72.6701, 22.9295, 23.3258

Details

The Yxy color **52.8094, 0.4138, 0.3576** is a light color, and the websafe version is hex **FF9999**. A complement of this color would be **68.7270, 0.2487, 0.2975**, and the grayscale version is **53.9030, 0.3127, 0.3290**.

A 20% lighter version of the original color is **80.8703, 0.3514, 0.3584**, and **25.7376, 0.4419, 0.3624** is the 20% darker color. If you saturate the color by 10%, you get **45.3064, 0.4488, 0.3634**, and if you desaturate by 10%, it is **61.5466, 0.3833, 0.3509**.

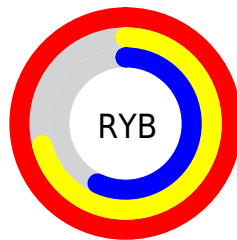
Distribution



Red (100%)

Green (67%)

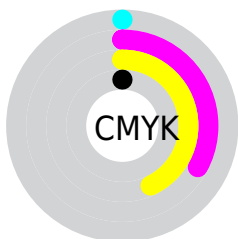
Blue (57%)



Red (100%)

Yellow (71%)

Blue (57%)

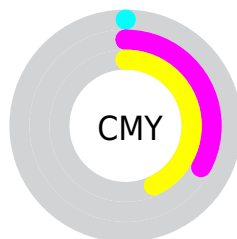


Cyan (0%)

Magenta (33%)

Yellow (43%)

Black (0%)



Cyan (0%)


Magenta (33%)


Yellow (43%)

Brightness & Saturation Gradients

These gradients show how the Yxy color 52.8094, 0.4138, 0.3576 changes by changing the brightness by 10 percent. The first figure shows a shift by +10% for each color and the second figure -10%.

Similar to the brightness gradients but the following saturation gradients show a change of the Yxy color 52.8094, 0.4138, 0.3576 by changing the saturation by 10% instead.


 52.8094, 0.4138,
0.3576

 52.8094, 0.4138,
0.3576


397.5534, 0.3639,
0.3458

 37.6506, 0.4259,
0.3598


 94.3238, 0.3959,
0.3539

 25.7117, 0.4411,
0.3621


 121.4483, 0.3891,
0.3523

 16.6080, 0.4607,
0.3645


153.3301, 0.3834,
0.3509

 9.9554, 0.4870,
0.3664

190.3537, 0.3784,
0.3497

 5.3694, 0.5232,
0.3665

232.9034, 0.3741,
0.3485

 2.4656, 0.5868,
0.3680

281.3637, 0.3703,

 0.8593, 0.6594,

0.3475

0.3406

336.1189, 0.3669,
0.3466

0.0000, 1.0000,
0.0000

0.0000, 0.0000,
0.0000

52.8094, 0.4138,
0.3576

52.8094, 0.4138,
0.3576

45.3064, 0.4488,
0.3634

61.5466, 0.3833,
0.3509

38.9843, 0.4875,
0.3675

71.5756, 0.3574,
0.3440

33.7797, 0.5275,
0.3686

82.9453, 0.3358,
0.3373

29.6245, 0.5652,
0.3658

95.7031, 0.3177,
0.3309

■ 26.4421, 0.5959,
0.3588

100.0000, 0.3127,
0.3290

■ 24.7694, 0.6118,
0.3524

Harmonies

Analogous

The Analogous color harmony consists of three colors that are next to each other on the color wheel.



52.8094, 0.3920, 0.3174



52.8094, 0.4138, 0.3576



52.8094, 0.4055, 0.3948

Triad

The Triadic color harmony groups three colors that are evenly spaced from another and form a triangle on the color wheel.



52.8094, 0.4138, 0.3576



52.8094, 0.2748, 0.3840



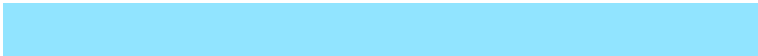
52.8094, 0.2519, 0.2480

Complementary

The Complementary color scheme is a pair of colors which are on the opposite of each other on the color wheel.



52.8094, 0.4138, 0.3576



68.7270, 0.2487, 0.2975

Split Complementary

Split-complementary colors differ from the complementary color scheme. The scheme consists of three colors, the original color and two neighbors of the complement color.



52.8094, 0.2261, 0.2576



52.8094, 0.4138, 0.3576



52.8094, 0.2381, 0.3338

Square

The Square scheme is like the rectangle color scheme, but the four colors are evenly spaced on the color wheel.



52.8094, 0.4138, 0.3576



52.8094, 0.3236, 0.4166



52.8094, 0.2212, 0.2873



52.8094, 0.2952, 0.2571

Rectangle

The Rectangle color scheme consists of four colors that form a rectangle on the color wheel.



52.8094, 0.4138, 0.3576



52.8094, 0.3852, 0.4130



52.8094, 0.2212, 0.2873



52.8094, 0.2411, 0.2490

Sweetspot

The Sweet Spot groups the original color and five complimentary colors.



52.8081, 0.4138, 0.3576



83.1119, 0.3355, 0.3372



47.1859, 0.3401, 0.2448



17.2261, 0.3399, 0.3386



0.0000, 0.0000, 0.0000



21.4041, 0.3127, 0.3290

Same Dimension

The Same Dimension uses a secret algorithm to generate beautiful new colors.



52.8081, 0.4138, 0.3576



46.0996, 0.4446, 0.3628



77.5155, 0.3890, 0.4105



18.7110, 0.3288, 0.3349



13.1371, 0.6090, 0.3546



1.4418, 0.5874, 0.3718

Inverse Universe

The Inverse Universe completely reimagines the original color for something new.



68.7270, 0.2487, 0.2975



63.8713, 0.2376, 0.2898



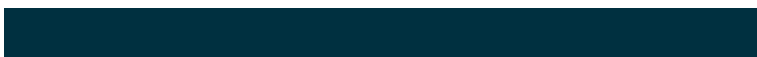
43.6400, 0.2374, 0.2306



19.6817, 0.2980, 0.3230



23.8131, 0.2021, 0.2474



2.4897, 0.2049, 0.2578

Previews

White Background



This preview shows how the Yxy color 52.8094, 0.4138, 0.3576 looks on a white background.

Color Contrast Check

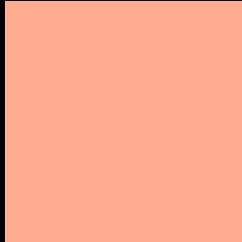
Large Text (above 18pt) WCAG AA × Fail

Any Text WCAG AA × Fail

Large Text (above 18pt) WCAG AAA × Fail

Any Text WCAG AAA × Fail

Black Background



This preview shows how the Yxy color 52.8094, 0.4138, 0.3576 looks on a black background.

Color Contrast Check

Large Text (above 18pt) WCAG AA ✓ Pass

Any Text WCAG AA ✓ Pass

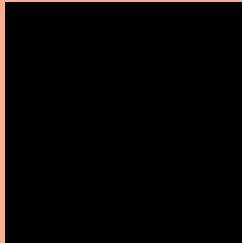
Large Text (above 18pt) WCAG AAA ✓ Pass

Any Text WCAG AAA ✓ Pass

If you want to check with other color combinations, try the [Color Contrast Checker](#).

Yxy 52.8094, 0.4138, 0.3576

Background



This preview shows how black text looks on a background with the Yxy color 52.8094, 0.4138, 0.3576.



This preview shows how white text looks on a background with the Yxy color 52.8094, 0.4138, 0.3576.

Color Blindness Simulation

Color vision deficiency is a very complex topic, and I could not describe the different causes any better than Wikipedia does, so if you want to learn more, you should check out their [article about color blindness](#).

Dichromacy



Original Color

52.8094, 0.4138, 0.3576

Protanopia

52.8697, 0.3526, 0.3760

Deuteranopia

53.0120, 0.3846, 0.3777



Tritanopia

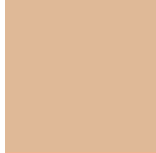
52.9312, 0.3821, 0.3176

Trichromacy



Original Color

52.8094, 0.4138, 0.3576



Protanomaly

52.6203, 0.3742, 0.3690



Deuteranomaly

52.6607, 0.3949, 0.3695



Tritanomaly

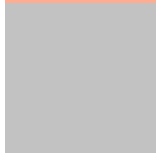
52.7995, 0.3940, 0.3324

Monochromacy



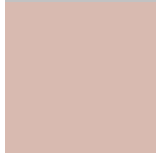
Original Color

52.8094, 0.4138, 0.3576



Achromatopsia

53.9479, 0.3127, 0.3290



Achromatomaly

52.8513, 0.3465, 0.3410

CSS Examples

Text

The CSS property to change the color of the text to Yxy 52.8094, 0.4138, 0.3576 is called "color". The color property can be set on classes, ids or directly on the HTML element.

This example shows how text in the color `rgb(255, 172, 145)` looks like.

```
.text, #text, p{  
    color:rgb(255, 172, 145)  
}
```

If you want to add a text shadow in that color use the text-shadow property, you can generate a text shadow directly with our [CSS Text Shadow Generator](#).

Here you see how black text with a 4 pixel rgb(255, 172, 145) colored shadow looks like.

```
.shadow{ text-shadow: 4px 4px 2px rgb(255, 172, 145) }
```

Border

The CSS property to change the border of an element to Yxy 52.8094, 0.4138, 0.3576 is called "border". The border property can be set on classes, ids or directly on the HTML element.

This example shows the color as border, it can be applied via the CSS property "border" or "border-color".

```
.border, #border, table{ border:4px solid rgb(255, 172, 145) }
```

If only the border color should be changed use the property border-color.

```
.border{ border-color:rgb(255, 172, 145) }
```

If you want to add a box shadow in that color use:

Here you see how a box with a 4 pixel rgb(255, 172, 145) colored shadow looks like.

```
.boxshadow{ -moz-box-shadow:4px 4px 4px  
4px rgb(255, 172, 145); -webkit-box-  
shadow:4px 4px 4px 4px rgb(255, 172, 145);  
box-shadow:4px 4px 4px 4px rgb(255, 172,  
145) }
```


Background

The CSS property to change the background color of an element to Yxy 52.8094, 0.4138, 0.3576 is called "background". The background property can be set on classes, ids or directly on the HTML element.

```
.background, #background, body{  
background: rgb(255, 172, 145) }
```

If only the background color should be changed can be used:

```
.background{ background-color: rgb(255,  
172, 145) }
```

This example shows the color as background, it is applied via the CSS property "background".

To optimize and compress your CSS code, you can use our [online CSS compressor and optimizer](#) based on csstidy. If you want to create a linear or radial gradient as background or border, check our [CSS Gradient Generator](#).

Hey! You found this booklet interesting? Support Converting Colors with the new Membership Option!

The pro membership hides all ads, plus gives you double the colors in the color bucket, and more awesome pro features!

[Learn more, Memberships starting at \\$2.50/m!](#)

**Follow me
on Twitter!**

@ConvertingColor