

Converting Colors

Yxy(57.7299, 0.3217, 0.3251)

Have a look what the booklet for
Yxy(57.7299, 0.3217, 0.3251)
contains.

Yxy(57.9515, 0.3216, 0.3255)	3
<i>Conversions</i>	4
<i>Details</i>	6
<i>Harmonies</i>	12
<i>Previews</i>	24
<i>Color Blindness Simulation</i>	27
<i>CSS Examples</i>	30

Color

Yxy(57.9515, 0.3216, 0.3255)

Conversions

Conversions Part 1

Format	Color
Hex	D3C5C8
RGB	211, 197, 200
RGB Percent	83%, 77%, 78%
CMY	0.1726, 0.2274, 0.2156
CMYK	0.00, 0.07, 0.05, 0.17
HSL	347°, 14%, 80%
HSV	347°, 7%, 83%
XYZ	57.2572, 57.9515, 62.8298
YIQ	201.5280, 7.3810, 3.9010

Conversions

Conversions Part 2

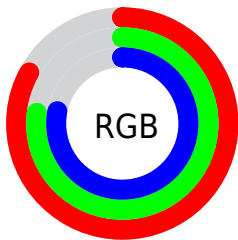
Format	Color
R _Y B	211, 197, 200
Decimal	13878728
CIE Lab	80.71, 5.42, 0.24
CIE LCh	81, 5.424, 2.513
Yxy	57.9515, 0.3216, 0.3255
Android (android.graphics.Color)	4292068808 (0xFFD3C5C8)
YUV	201.5280, -0.7533, 8.3069
Hunter-Lab	76.1259, 1.0363, 4.3537

Details

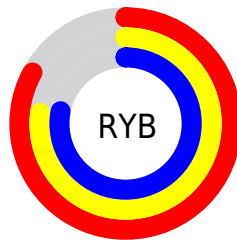
The Yxy color **57.9515, 0.3216, 0.3255** is a light color, and the websafe version is hex **CCCCCC**. A complement of this color would be **63.0097, 0.3045, 0.3325**, and the grayscale version is **58.7568, 0.3127, 0.3290**.

A 20% lighter version of the original color is **99.3636, 0.3128, 0.3281**, and **28.7882, 0.3236, 0.3244** is the 20% darker color. If you saturate the color by 10%, you get **48.3010, 0.3376, 0.3199**, and if you desaturate by 10%, it is **69.0318, 0.3087, 0.3307**.

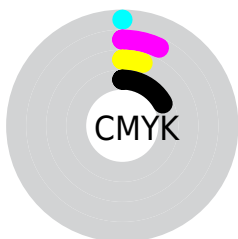
Distribution



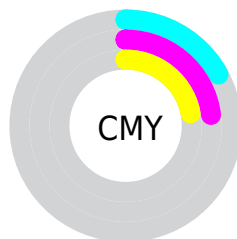
- Red (83%)
- Green (77%)
- Blue (78%)



- Red (83%)
- Yellow (77%)
- Blue (78%)



- Cyan (0%)
- Magenta (7%)
- Yellow (5%)
- Black (17%)



- Cyan (17%)
- Magenta (23%)
- Yellow (22%)

Brightness & Saturation Gradients

These gradients show how the Yxy color 57.9515, 0.3216, 0.3255 changes by changing the brightness by 10 percent. The first figure shows a shift by +10% for each color and the second figure -10%.

Similar to the brightness gradients but the following saturation gradients show a change of the Yxy color 57.9515, 0.3216, 0.3255 by changing the saturation by 10% instead.

■ 57.9515, 0.3216,
0.3255

■ 57.9515, 0.3216,
0.3255

417.0052, 0.3173,
0.3272

■ 41.7697, 0.3226,
0.3251

101.8522, 0.3201,
0.3261

■ 28.9210, 0.3239,
0.3246

130.3399, 0.3195,
0.3263

■ 19.0210, 0.3256,
0.3239

163.6983, 0.3190,
0.3265

■ 11.6855, 0.3279,
0.3230

202.3119, 0.3186,
0.3267

■ 6.5299, 0.3311,
0.3217

246.5649, 0.3182,
0.3269

■ 3.1699, 0.3361,
0.3197

296.8419, 0.3179,

■ 1.2211, 0.3449,

0.3270

0.3161

353.5272, 0.3176,
0.3271

0.0788, 0.5833,
0.2219

0.0000, 0.0000,
0.0000

57.9515, 0.3216,
0.3255

57.9515, 0.3216,
0.3255

48.3010, 0.3376,
0.3199

69.0318, 0.3087,
0.3307

40.0146, 0.3573,
0.3141

81.5890, 0.2982,
0.3355

33.0328, 0.3815,
0.3082

92.2475, 0.2894,
0.3345

27.2889, 0.4107,
0.3027

92.5882, 0.2866,
0.3289

■ 22.7100, 0.4450,
0.2983

■ 19.2157, 0.4837,
0.2958

■ 16.7153, 0.5244,
0.2963

■ 15.1030, 0.5633,
0.3004

■ 14.2435, 0.5956,
0.3080

Harmonies

Analogous

The Analogous color harmony consists of three colors that are next to each other on the color wheel.



57.9515, 0.3151, 0.3203



57.9515, 0.3216, 0.3255



57.9515, 0.3258, 0.3317

Triad

The Triadic color harmony groups three colors that are evenly spaced from another and form a triangle on the color wheel.



57.9515, 0.3216, 0.3255



57.9515, 0.3174, 0.3410



57.9515, 0.2993, 0.3206

Complementary

The Complementary color scheme is a pair of colors which are on the opposite of each other on the color wheel.



57.9515, 0.3216, 0.3255



63.0097, 0.3045, 0.3325

Split Complementary

Split-complementary colors differ from the complementary color scheme. The scheme consists of three colors, the original color and two neighbors of the complement color.



57.9515, 0.2999, 0.3261



57.9515, 0.3216, 0.3255



57.9515, 0.3103, 0.3380

Square

The Square scheme is like the rectangle color scheme, but the four colors are evenly spaced on the color wheel.



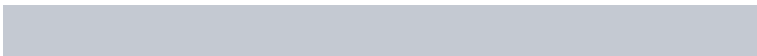
57.9515, 0.3216, 0.3255



57.9515, 0.3233, 0.3407



57.9515, 0.3039, 0.3325



57.9515, 0.3022, 0.3174

Rectangle

The Rectangle color scheme consists of four colors that form a rectangle on the color wheel.



57.9515, 0.3216, 0.3255



57.9515, 0.3266, 0.3356



57.9515, 0.3039, 0.3325



57.9515, 0.2990, 0.3222

Sweetspot

The Sweet Spot groups the original color and five complimentary colors.



57.9540, 0.3216, 0.3255



96.5343, 0.3153, 0.3280



58.0418, 0.3111, 0.3128



20.6986, 0.3152, 0.3280



0.0000, 0.0000, 0.0000



21.4041, 0.3127, 0.3290

Same Dimension

The Same Dimension uses a secret algorithm to generate beautiful new colors.



57.9540, 0.3216, 0.3255



86.6807, 0.3237, 0.3247



59.6381, 0.3235, 0.3336



11.8495, 0.3257, 0.3240



8.4877, 0.6015, 0.3087



0.4867, 0.5492, 0.2799

Inverse Universe

The Inverse Universe completely reimagines the original color for something new.



57.9540, 0.3216, 0.3255



86.6807, 0.3237, 0.3247



61.2146, 0.3025, 0.3243



11.8495, 0.3257, 0.3240



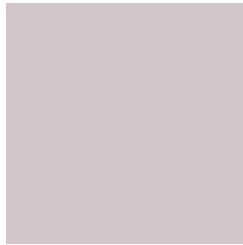
8.4877, 0.6015, 0.3087



0.4867, 0.5492, 0.2799

Previews

White Background



This preview shows how the Yxy color 57.9515, 0.3216, 0.3255 looks on a white background.

Color Contrast Check

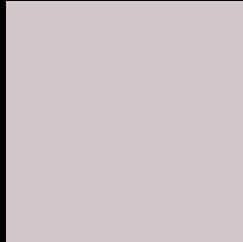
Large Text (above 18pt) WCAG AA × Fail

Any Text WCAG AA × Fail

Large Text (above 18pt) WCAG AAA × Fail

Any Text WCAG AAA × Fail

Black Background



This preview shows how the Yxy color 57.9515, 0.3216, 0.3255 looks on a black background.

Color Contrast Check

Large Text (above 18pt) WCAG AA ✓ Pass

Any Text WCAG AA ✓ Pass

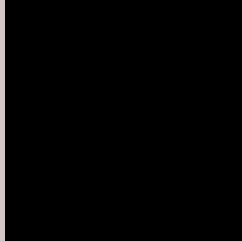
Large Text (above 18pt) WCAG AAA ✓ Pass

Any Text WCAG AAA ✓ Pass

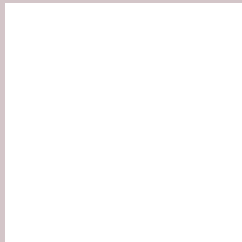
If you want to check with other color combinations, try the [Color Contrast Checker](#).

Yxy 57.9515, 0.3216, 0.3255

Background



This preview shows how black text looks on a background with the Yxy color 57.9515, 0.3216, 0.3255.



This preview shows how white text looks on a background with the Yxy color 57.9515, 0.3216, 0.3255.

Color Blindness Simulation

Color vision deficiency is a very complex topic, and I could not describe the different causes any better than Wikipedia does, so if you want to learn more, you should check out their [article about color blindness](#).

Dichromacy



Original Color

57.9515, 0.3216, 0.3255

Protanopia

57.7604, 0.3144, 0.3266

Deuteranopia

57.8607, 0.3276, 0.3211



Tritanopia

57.8795, 0.3152, 0.3107

Trichromacy



Original Color

57.9515, 0.3216, 0.3255

Protanomaly

57.7270, 0.3168, 0.3255

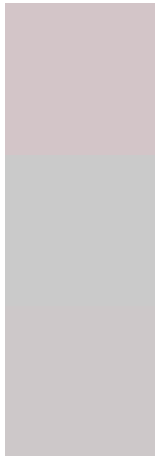
Deuteranomaly

57.8462, 0.3251, 0.3221

Tritanomaly

57.9819, 0.3173, 0.3163

Monochromacy



Original Color

57.9515, 0.3216, 0.3255

Achromatopsia

59.0619, 0.3127, 0.3290

Achromatomaly

58.5047, 0.3159, 0.3278

CSS Examples

Text

The CSS property to change the color of the text to Yxy 57.9515, 0.3216, 0.3255 is called "color". The color property can be set on classes, ids or directly on the HTML element.

This example shows how text in the color `rgb(211, 197, 200)` looks like.

```
.text, #text, p{  
    color:rgb(211, 197, 200)  
}
```

If you want to add a text shadow in that color use the text-shadow property, you can generate a text shadow directly with our [CSS Text Shadow Generator](#).

Here you see how black text with a 4 pixel rgb(211, 197, 200) colored shadow looks like.

```
.shadow{ text-shadow: 4px 4px 2px rgb(211, 197, 200) }
```

Border

The CSS property to change the border of an element to Yxy 57.9515, 0.3216, 0.3255 is called "border". The border property can be set on classes, ids or directly on the HTML element.

This example shows the color as border, it can be applied via the CSS property "border" or "border-color".

```
.border, #border, table{ border:4px solid rgb(211, 197, 200) }
```

If only the border color should be changed use the property `border-color`.

```
.border{ border-color:rgb(211, 197, 200) }
```

If you want to add a box shadow in that color use:

Here you see how a box with a 4 pixel `rgb(211, 197, 200)` colored shadow looks like.

```
.boxshadow{ -moz-box-shadow:4px 4px 4px  
4px rgb(211, 197, 200); -webkit-box-  
shadow:4px 4px 4px 4px rgb(211, 197, 200);  
box-shadow:4px 4px 4px 4px rgb(211, 197,  
200) }
```


Background

The CSS property to change the background color of an element to Yxy 57.9515, 0.3216, 0.3255 is called "background". The background property can be set on classes, ids or directly on the HTML element.

```
.background, #background, body{  
background: rgb(211, 197, 200) }
```

If only the background color should be changed can be used:

```
.background{ background-color: rgb(211,  
197, 200) }
```

This example shows the color as background, it is applied via the CSS property "background".

To optimize and compress your CSS code, you can use our [online CSS compressor and optimizer](#) based on csstidy. If you want to create a linear or radial gradient as background or border, check our [CSS Gradient Generator](#).

Hey! You found this booklet interesting? Support Converting Colors with the new Membership Option!

The pro membership hides all ads, plus gives you double the colors in the color bucket, and more awesome pro features!

[Learn more, Memberships starting at \\$2.50/m!](#)

**Follow me
on Twitter!**

@ConvertingColor