

Converting Colors

Yxy(57.7580, 0.3399, 0.3375)

Have a look what the booklet for
Yxy(57.7580, 0.3399, 0.3375)
contains.

Yxy(57.9902, 0.3401, 0.3383)	3
<i>Conversions</i>	4
<i>Details</i>	6
<i>Harmonies</i>	12
<i>Previews</i>	24
<i>Color Blindness Simulation</i>	27
<i>CSS Examples</i>	30

Color

Yxy(57.9902, 0.3401, 0.3383)

Conversions

Conversions Part 1

Format	Color
Hex	DDC3BB
RGB	221, 195, 187
RGB Percent	87%, 76%, 73%
CMY	0.1334, 0.2352, 0.2667
CMYK	0.00, 0.12, 0.15, 0.13
HSL	14°, 33%, 80%
HSV	14°, 15%, 87%
XYZ	58.2987, 57.9902, 55.1275
YIQ	201.8620, 18.0640, 3.0240

Conversions

Conversions Part 2

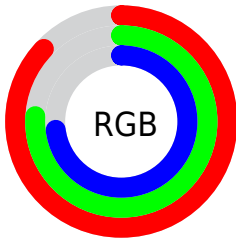
Format	Color
R _Y B	221, 197, 187
Decimal	14533563
CIE Lab	80.73, 7.87, 7.38
CIE LCh	81, 10.788, 43.146
Yxy	57.9902, 0.3401, 0.3383
Android (android.graphics.Color)	4292723643 (0xFFDDC3BB)
YUV	201.8620, -7.3270, 16.7840
Hunter-Lab	76.1513, 3.3885, 10.3846

Details

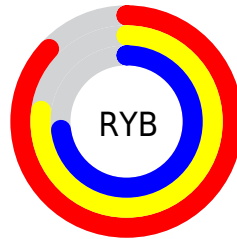
The Yxy color $57.9902, 0.3401, 0.3383$ is a light color, and the websafe version is hex `CCCCCC`. A complement of this color would be $63.3521, 0.2891, 0.3195$, and the grayscale version is $59.0103, 0.3127, 0.3290$.

A 20% lighter version of the original color is $97.3519, 0.3199, 0.3377$, and $28.8780, 0.3477, 0.3397$ is the 20% darker color. If you saturate the color by 10%, you get $49.9745, 0.3625, 0.3448$, and if you desaturate by 10%, it is $67.0122, 0.3214, 0.3321$.

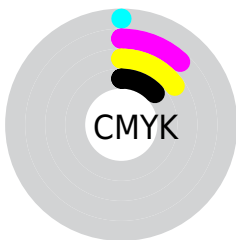
Distribution



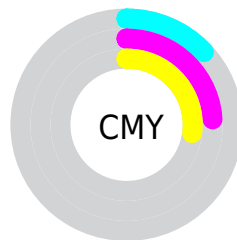
- Red (87%)
- Green (76%)
- Blue (73%)



- Red (87%)
- Yellow (77%)
- Blue (73%)



- Cyan (0%)
- Magenta (12%)
- Yellow (15%)
- Black (13%)




- Cyan (13%)
- Magenta (24%)
- Yellow (27%)

Brightness & Saturation Gradients

These gradients show how the Yxy color 57.9902, 0.3401, 0.3383 changes by changing the brightness by 10 percent. The first figure shows a shift by +10% for each color and the second figure -10%.


Similar to the brightness gradients but the following saturation gradients show a change of the Yxy color 57.9902, 0.3401, 0.3383 by changing the saturation by 10% instead.

 57.9902, 0.3401,
0.3383

 57.9902, 0.3401,
0.3383


417.1494, 0.3268,
0.3340

 41.8008, 0.3433,
0.3393


 101.9086, 0.3354,
0.3368

 28.9453, 0.3473,
0.3405


130.4063, 0.3336,
0.3362

 19.0395, 0.3526,
0.3421


163.7756, 0.3320,
0.3357

 11.6988, 0.3597,
0.3441

202.4009, 0.3307,
0.3353

 6.5389, 0.3699,
0.3469

246.6665, 0.3295,
0.3349

 3.1755, 0.3857,
0.3508

296.9569, 0.3285,

 1.2240, 0.4147,

0.3345

0.3578

353.6564, 0.3276,
0.3342

0.0812, 0.7684,
0.2316

0.0000, 0.0000,
0.0000

57.9902, 0.3401,
0.3383

57.9902, 0.3401,
0.3383

49.9745, 0.3625,
0.3448

67.0122, 0.3214,
0.3321

42.9224, 0.3892,
0.3514

77.0659, 0.3059,
0.3264

36.7993, 0.4206,
0.3577

88.1856, 0.2930,
0.3212

31.5658, 0.4565,
0.3630

94.1097, 0.2923,
0.3289

■ 27.1795, 0.4957,
0.3663

■ 23.5943, 0.5357,
0.3667

■ 20.7596, 0.5725,
0.3632

■ 18.6182, 0.6016,
0.3558

■ 17.8393, 0.6125,
0.3519

Harmonies

Analogous

The Analogous color harmony consists of three colors that are next to each other on the color wheel.



57.9902, 0.3341, 0.3262



57.9902, 0.3401, 0.3383



57.9902, 0.3386, 0.3483

Triad

The Triadic color harmony groups three colors that are evenly spaced from another and form a triangle on the color wheel.



57.9902, 0.3401, 0.3383



57.9902, 0.3029, 0.3436



57.9902, 0.2954, 0.3053

Complementary

The Complementary color scheme is a pair of colors which are on the opposite of each other on the color wheel.



57.9902, 0.3401, 0.3383



63.3521, 0.2891, 0.3195

Split Complementary

Split-complementary colors differ from the complementary color scheme. The scheme consists of three colors, the original color and two neighbors of the complement color.



57.9902, 0.2874, 0.3093



57.9902, 0.3401, 0.3383



57.9902, 0.2917, 0.3313

Square

The Square scheme is like the rectangle color scheme, but the four colors are evenly spaced on the color wheel.



57.9902, 0.3401, 0.3383



57.9902, 0.3169, 0.3518



57.9902, 0.2861, 0.3187



57.9902, 0.3080, 0.3075

Rectangle

The Rectangle color scheme consists of four colors that form a rectangle on the color wheel.



57.9902, 0.3401, 0.3383



57.9902, 0.3335, 0.3524



57.9902, 0.2861, 0.3187



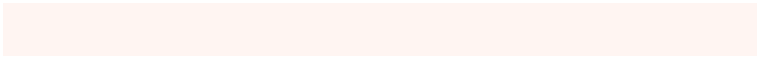
57.9902, 0.2921, 0.3060

Sweetspot

The Sweet Spot groups the original color and five complimentary colors.



57.9928, 0.3401, 0.3383



93.1475, 0.3208, 0.3319



55.7126, 0.3206, 0.2997



19.7375, 0.3221, 0.3324



0.0000, 0.0000, 0.0000



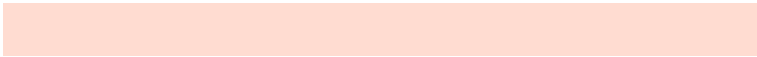
21.4041, 0.3127, 0.3290

Same Dimension

The Same Dimension uses a secret algorithm to generate beautiful new colors.



57.9928, 0.3401, 0.3383



77.0194, 0.3459, 0.3401



66.0035, 0.3372, 0.3572



13.5478, 0.3286, 0.3346



10.5105, 0.6099, 0.3539



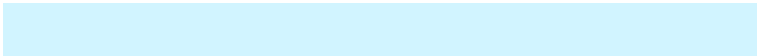
0.8140, 0.5779, 0.3794

Inverse Universe

The Inverse Universe completely reimagines the original color for something new.



63.3521, 0.2891, 0.3195



85.5921, 0.2849, 0.3177



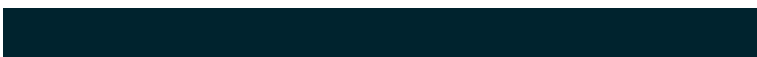
55.2876, 0.2883, 0.2991



14.2815, 0.2982, 0.3234



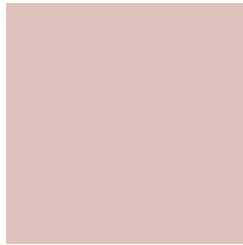
19.6649, 0.2031, 0.2513



1.4025, 0.2071, 0.2654

Previews

White Background



This preview shows how the Yxy color 57.9902, 0.3401, 0.3383 looks on a white background.

Color Contrast Check

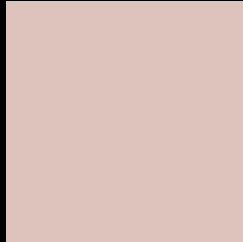
Large Text (above 18pt) WCAG AA × Fail

Any Text WCAG AA × Fail

Large Text (above 18pt) WCAG AAA × Fail

Any Text WCAG AAA × Fail

Black Background



This preview shows how the Yxy color 57.9902, 0.3401, 0.3383 looks on a black background.

Color Contrast Check

Large Text (above 18pt) WCAG AA ✓ Pass

Any Text WCAG AA ✓ Pass

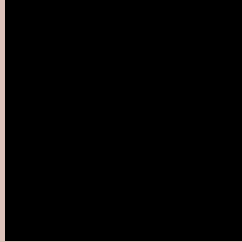
Large Text (above 18pt) WCAG AAA ✓ Pass

Any Text WCAG AAA ✓ Pass

If you want to check with other color combinations, try the [Color Contrast Checker](#).

Yxy 57.9902, 0.3401, 0.3383

Background



This preview shows how black text looks on a background with the Yxy color 57.9902, 0.3401, 0.3383.



This preview shows how white text looks on a background with the Yxy color 57.9902, 0.3401, 0.3383.

Color Blindness Simulation

Color vision deficiency is a very complex topic, and I could not describe the different causes any better than Wikipedia does, so if you want to learn more, you should check out their [article about color blindness](#).

Dichromacy



Original Color

57.9902, 0.3401, 0.3383

Protanopia

58.2917, 0.3256, 0.3409

Deuteranopia

58.1790, 0.3436, 0.3371



Tritanopia

58.0516, 0.3273, 0.3122

Trichromacy



Original Color

57.9902, 0.3401, 0.3383

Protanomaly

58.0593, 0.3307, 0.3396

Deuteranomaly

58.0187, 0.3428, 0.3371

Tritanomaly

57.9980, 0.3318, 0.3211

Monochromacy



Original Color

57.9902, 0.3401, 0.3383

Achromatopsia

59.0619, 0.3127, 0.3290

Achromatomaly

58.4334, 0.3221, 0.3314

CSS Examples

Text

The CSS property to change the color of the text to Yxy 57.9902, 0.3401, 0.3383 is called "color". The color property can be set on classes, ids or directly on the HTML element.

This example shows how text in the color `rgb(221, 195, 187)` looks like.

```
.text, #text, p{  
    color:rgb(221, 195, 187)  
}
```

If you want to add a text shadow in that color use the text-shadow property, you can generate a text shadow directly with our [CSS Text Shadow Generator](#).

Here you see how black text with a 4 pixel rgb(221, 195, 187) colored shadow looks like.

```
.shadow{ text-shadow: 4px 4px 2px rgb(221, 195, 187) }
```

Border

The CSS property to change the border of an element to Yxy 57.9902, 0.3401, 0.3383 is called "border". The border property can be set on classes, ids or directly on the HTML element.

This example shows the color as border, it can be applied via the CSS property "border" or "border-color".

```
.border, #border, table{ border:4px solid rgb(221, 195, 187) }
```

If only the border color should be changed use the property `border-color`.

```
.border{ border-color:rgb(221, 195, 187) }
```

If you want to add a box shadow in that color use:

Here you see how a box with a 4 pixel `rgb(221, 195, 187)` colored shadow looks like.

```
.boxshadow{ -moz-box-shadow:4px 4px 4px  
4px rgb(221, 195, 187); -webkit-box-  
shadow:4px 4px 4px 4px rgb(221, 195, 187);  
box-shadow:4px 4px 4px 4px rgb(221, 195,  
187) }
```


Background

The CSS property to change the background color of an element to Yxy 57.9902, 0.3401, 0.3383 is called "background". The background property can be set on classes, ids or directly on the HTML element.

```
.background, #background, body{  
background: rgb(221, 195, 187) }
```

If only the background color should be changed can be used:

```
.background{ background-color: rgb(221,  
195, 187) }
```

This example shows the color as background, it is applied via the CSS property "background".

To optimize and compress your CSS code, you can use our [online CSS compressor and optimizer](#) based on csstidy. If you want to create a linear or radial gradient as background or border, check our [CSS Gradient Generator](#).

Hey! You found this booklet interesting? Support Converting Colors with the new Membership Option!

The pro membership hides all ads, plus gives you double the colors in the color bucket, and more awesome pro features!

[Learn more, Memberships starting at \\$2.50/m!](#)

**Follow me
on Twitter!**

@ConvertingColor