

Converting Colors

$Y_{xy}(57.7965, 0.3335, 0.3360)$

Have a look what the booklet for
Yxy(57.7965, 0.3335, 0.3360)
contains.

Yxy(57.7965, 0.3335, 0.3360)	3
Conversions	4
Details	6
Harmonies	12
Previews	24
Color Blindness Simulation	27
CSS Examples	30

Color

Yxy(57.7965, 0.3335, 0.3360)

Conversions

Conversions Part 1

Format	Color
Hex	D8C4BE
RGB	216, 196, 190
RGB Percent	85%, 77%, 75%
CMY	0.1527, 0.2314, 0.2549
CMYK	0.00, 0.09, 0.12, 0.15
HSL	14°, 25%, 80%
HSV	14°, 12%, 85%
XYZ	57.3665, 57.7965, 56.8504
YIQ	201.2960, 13.8460, 2.3740

Conversions

Conversions Part 2

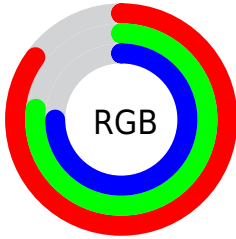
Format	Color
R _Y B	216, 198, 190
Decimal	14206142
CIE Lab	80.63, 6.06, 5.55
CIE LCh	81, 8.215, 42.478
Yxy	57.7965, 0.3335, 0.3360
Android (android.graphics.Color)	4292396222 (0xFFD8C4BE)
YUV	201.2960, -5.5689, 12.8954
Hunter-Lab	76.0240, 1.6511, 8.8800

Details

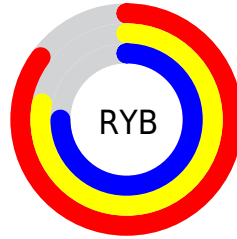
The Yxy color $57.7965, 0.3335, 0.3360$ is a light color, and the websafe version is hex `CCCCCC`. A complement of this color would be $62.0424, 0.2942, 0.3219$, and the grayscale version is $58.6361, 0.3127, 0.3290$.

A 20% lighter version of the original color is $98.1644, 0.3181, 0.3357$, and $28.7292, 0.3386, 0.3368$ is the 20% darker color. If you saturate the color by 10%, you get $49.8255, 0.3546, 0.3422$, and if you desaturate by 10%, it is $66.7461, 0.3159, 0.3302$.

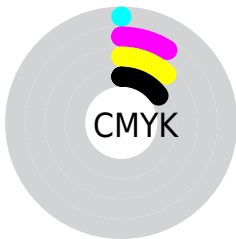
Distribution



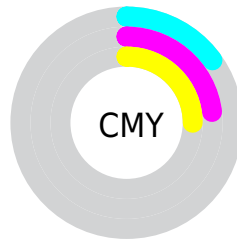
- Red (85%)
- Green (77%)
- Blue (75%)



- Red (85%)
- Yellow (78%)
- Blue (75%)



- Cyan (0%)
- Magenta (9%)
- Yellow (12%)
- Black (15%)





- Cyan (15%)
- Magenta (23%)
- Yellow (25%)

Brightness & Saturation Gradients


These gradients show how the Yxy color 57.7965, 0.3335, 0.3360 changes by changing the brightness by 10 percent. The first figure shows a shift by +10% for each color and the second figure -10%.

Similar to the brightness gradients but the following saturation gradients show a change of the Yxy color 57.7965, 0.3335, 0.3360 by changing the saturation by 10% instead.


 57.7965, 0.3335,
0.3360

 57.7965, 0.3335,
0.3360

416.4272, 0.3234,
0.3327

 41.6451, 0.3359,
0.3368


 101.6265, 0.3299,
0.3348

 28.8235, 0.3390,
0.3377


130.0738, 0.3285,
0.3344

 18.9473, 0.3430,
0.3389


163.3885, 0.3274,
0.3340

 11.6322, 0.3484,
0.3405

201.9550, 0.3264,
0.3337

 6.4938, 0.3561,
0.3427

246.1578, 0.3255,
0.3334

 3.1476, 0.3682,
0.3460

296.3811, 0.3247,

 1.2093, 0.3895,

0.3331

353.0095, 0.3240,
0.3329

0.3512

0.0692, 0.7553,
0.2447

0.0000, 0.0000,
0.0000

57.7965, 0.3335,
0.3360

57.7965, 0.3335,
0.3360

49.8255, 0.3546,
0.3422

66.7461, 0.3159,
0.3302

42.7921, 0.3799,
0.3486

76.6981, 0.3014,
0.3247

36.6638, 0.4098,
0.3549

87.6853, 0.2892,
0.3198

31.4031, 0.4444,
0.3604

93.3480, 0.2895,
0.3289

■ 26.9701, 0.4829,
0.3644

■ 23.3215, 0.5232,
0.3659

■ 20.4098, 0.5618,
0.3637

■ 18.1819, 0.5941,
0.3576

■ 16.8534, 0.6136,
0.3510

Harmonies

Analogous

The Analogous color harmony consists of three colors that are next to each other on the color wheel.



57.7965, 0.3288, 0.3267



57.7965, 0.3335, 0.3360



57.7965, 0.3325, 0.3437

Triad

The Triadic color harmony groups three colors that are evenly spaced from another and form a triangle on the color wheel.



57.7965, 0.3335, 0.3360



57.7965, 0.3055, 0.3403



57.7965, 0.2993, 0.3109

Complementary

The Complementary color scheme is a pair of colors which are on the opposite of each other on the color wheel.



57.7965, 0.3335, 0.3360



62.0424, 0.2942, 0.3219

Split Complementary

Split-complementary colors differ from the complementary color scheme. The scheme consists of three colors, the original color and two neighbors of the complement color.



57.7965, 0.2933, 0.3141



57.7965, 0.3335, 0.3360



57.7965, 0.2968, 0.3311

Square

The Square scheme is like the rectangle color scheme, but the four colors are evenly spaced on the color wheel.



57.7965, 0.3335, 0.3360



57.7965, 0.3162, 0.3463



57.7965, 0.2924, 0.3215



57.7965, 0.3090, 0.3124

Rectangle

The Rectangle color scheme consists of four colors that form a rectangle on the color wheel.



57.7965, 0.3335, 0.3360



57.7965, 0.3288, 0.3468



57.7965, 0.2924, 0.3215



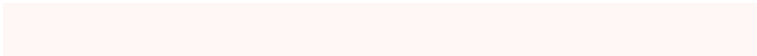
57.7965, 0.2968, 0.3115

Sweetspot

The Sweet Spot groups the original color and five complimentary colors.



57.7991, 0.3335, 0.3360



94.4479, 0.3192, 0.3313



56.1116, 0.3184, 0.3057



19.9979, 0.3204, 0.3317



0.0000, 0.0000, 0.0000



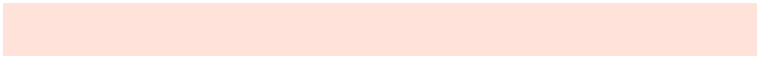
21.4041, 0.3127, 0.3290

Same Dimension

The Same Dimension uses a secret algorithm to generate beautiful new colors.



57.7991, 0.3335, 0.3360



81.5980, 0.3376, 0.3373



63.7691, 0.3317, 0.3504



12.8786, 0.3285, 0.3344



10.1056, 0.6111, 0.3530



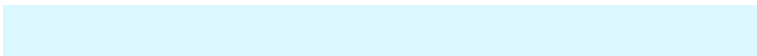
0.7371, 0.5770, 0.3801

Inverse Universe

The Inverse Universe completely reimagines the original color for something new.



62.0424, 0.2942, 0.3219



88.7308, 0.2911, 0.3206



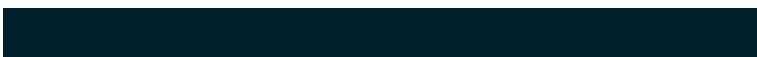
56.0180, 0.2939, 0.3066



13.6021, 0.2982, 0.3235



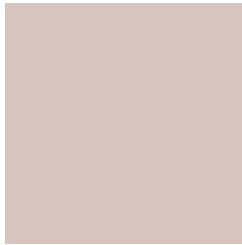
19.3412, 0.2038, 0.2537



1.2872, 0.2078, 0.2682

Previews

White Background



This preview shows how the Yxy color 57.7965, 0.3335, 0.3360 looks on a white background.

Color Contrast Check

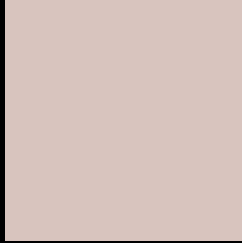
Large Text (above 18pt) WCAG AA × Fail

Any Text WCAG AA × Fail

Large Text (above 18pt) WCAG AAA × Fail

Any Text WCAG AAA × Fail

Black Background



This preview shows how the Yxy color 57.7965, 0.3335, 0.3360 looks on a black background.

Color Contrast Check

Large Text (above 18pt) WCAG AA ✓ Pass

Any Text WCAG AA ✓ Pass

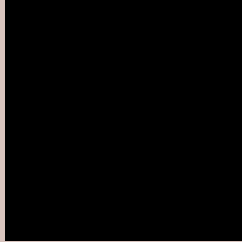
Large Text (above 18pt) WCAG AAA ✓ Pass

Any Text WCAG AAA ✓ Pass

If you want to check with other color combinations, try the [Color Contrast Checker](#).

Yxy 57.7965, 0.3335, 0.3360

Background



This preview shows how black text looks on a background with the Yxy color 57.7965, 0.3335, 0.3360.



This preview shows how white text looks on a background with the Yxy color 57.7965, 0.3335, 0.3360.

Color Blindness Simulation

Color vision deficiency is a very complex topic, and I could not describe the different causes any better than Wikipedia does, so if you want to learn more, you should check out their [article about color blindness](#).

Dichromacy



Original Color

57.7965, 0.3335, 0.3360

Protanopia

57.7744, 0.3234, 0.3373

Deuteranopia

57.5895, 0.3389, 0.3314



Tritanopia

57.7541, 0.3224, 0.3120

Trichromacy



Original Color

57.7965, 0.3335, 0.3360

Protanomaly

57.8514, 0.3275, 0.3373

Deuteranomaly

57.5608, 0.3363, 0.3325

Tritanomaly

57.7060, 0.3268, 0.3210

Monochromacy



Original Color

57.7965, 0.3335, 0.3360

Achromatopsia

58.4078, 0.3127, 0.3290

Achromatomaly

57.9999, 0.3197, 0.3314

CSS Examples

Text

The CSS property to change the color of the text to Yxy 57.7965, 0.3335, 0.3360 is called "color". The color property can be set on classes, ids or directly on the HTML element.

This example shows how text in the color `rgb(216, 196, 190)` looks like.

```
.text, #text, p{  
    color:rgb(216, 196, 190)  
}
```

If you want to add a text shadow in that color use the text-shadow property, you can generate a text shadow directly with our [CSS Text Shadow Generator](#).

Here you see how black text with a 4 pixel rgb(216, 196, 190) colored shadow looks like.

```
.shadow{ text-shadow: 4px 4px 2px rgb(216, 196, 190) }
```

Border

The CSS property to change the border of an element to Yxy 57.7965, 0.3335, 0.3360 is called "border". The border property can be set on classes, ids or directly on the HTML element.

This example shows the color as border, it can be applied via the CSS property "border" or "border-color".

```
.border, #border, table{ border:4px solid rgb(216, 196, 190) }
```

If only the border color should be changed use the property border-color.

```
.border{ border-color:rgb(216, 196, 190) }
```

If you want to add a box shadow in that color use:

Here you see how a box with a 4 pixel rgb(216, 196, 190) colored shadow looks like.

```
.boxshadow{ -moz-box-shadow:4px 4px 4px  
4px rgb(216, 196, 190); -webkit-box-  
shadow:4px 4px 4px 4px rgb(216, 196, 190);  
box-shadow:4px 4px 4px 4px rgb(216, 196,  
190) }
```


Background

The CSS property to change the background color of an element to Yxy 57.7965, 0.3335, 0.3360 is called "background". The background property can be set on classes, ids or directly on the HTML element.

```
.background, #background, body{  
background: rgb(216, 196, 190) }
```

If only the background color should be changed can be used:

```
.background{ background-color: rgb(216,  
196, 190) }
```

This example shows the color as background, it is applied via the CSS property "background".

To optimize and compress your CSS code, you can use our [online CSS compressor and optimizer](#) based on csstidy. If you want to create a linear or radial gradient as background or border, check our [CSS Gradient Generator](#).

Hey! You found this booklet interesting? Support Converting Colors with the new Membership Option!

The pro membership hides all ads, plus gives you double the colors in the color bucket, and more awesome pro features!

[Learn more, Memberships starting at \\$2.50/m!](#)

**Follow me
on Twitter!**

@ConvertingColor