

Converting Colors

$Y_{xy}(57.7977, 0.3299, 0.3324)$

Have a look what the booklet for
Yxy(57.7977, 0.3299, 0.3324)
contains.

Yxy(57.7772, 0.3303, 0.3325)	3
Conversions	4
Details	6
Harmonies	12
Previews	24
Color Blindness Simulation	27
CSS Examples	30

Color

Yxy(57.7772, 0.3303, 0.3325)

Conversions

Conversions Part 1

Format	Color
Hex	D7C4C1
RGB	215, 196, 193
RGB Percent	84%, 77%, 76%
CMY	0.1568, 0.2314, 0.2430
CMYK	0.00, 0.09, 0.10, 0.16
HSL	8°, 22%, 80%
HSV	8°, 10%, 84%
XYZ	57.3949, 57.7772, 58.5939
YIQ	201.3390, 12.2870, 3.0950

Conversions

Conversions Part 2

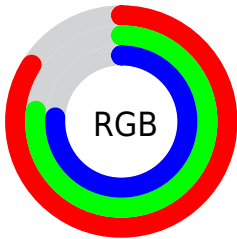
Format	Color
R _Y B	215, 196, 193
Decimal	14140609
CIE Lab	80.61, 6.18, 3.90
CIE LCh	81, 7.304, 32.272
Yxy	57.7772, 0.3303, 0.3325
Android (android.graphics.Color)	4292330689 (0xFFD7C4C1)
YUV	201.3390, -4.1111, 11.9807
Hunter-Lab	76.0113, 1.7627, 7.5038

Details

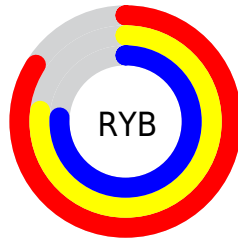
The Yxy color $57.7772, 0.3303, 0.3325$ is a light color, and the websafe version is hex `CCCCCC`. A complement of this color would be $63.3558, 0.2970, 0.3255$, and the grayscale version is $58.6533, 0.3127, 0.3290$.

A 20% lighter version of the original color is $98.3501, 0.3163, 0.3328$, and $28.7130, 0.3344, 0.3321$ is the 20% darker color. If you saturate the color by 10%, you get $49.0133, 0.3514, 0.3362$, and if you desaturate by 10%, it is $67.7254, 0.3131, 0.3291$.

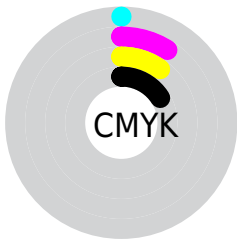
Distribution



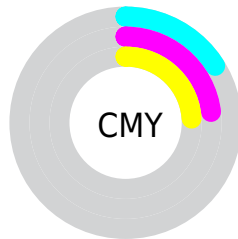
- Red (84%)
- Green (77%)
- Blue (76%)



- Red (84%)
- Yellow (77%)
- Blue (76%)



- Cyan (0%)
- Magenta (9%)
- Yellow (10%)
- Black (16%)



- Cyan (16%)
- Magenta (23%)
- Yellow (24%)

Brightness & Saturation Gradients


These gradients show how the Yxy color 57.7772, 0.3303, 0.3325 changes by changing the brightness by 10 percent. The first figure shows a shift by +10% for each color and the second figure -10%.


Similar to the brightness gradients but the following saturation gradients show a change of the Yxy color 57.7772, 0.3303, 0.3325 by changing the saturation by 10% instead.


 57.7772, 0.3303,
0.3325

 57.7772, 0.3303,
0.3325


416.3552, 0.3218,
0.3309

 41.6296, 0.3323,
0.3329


 101.5983, 0.3273,
0.3319

 28.8113, 0.3349,
0.3333


130.0406, 0.3261,
0.3317

 18.9381, 0.3383,
0.3339


163.3499, 0.3251,
0.3315

 11.6256, 0.3429,
0.3347

201.9106, 0.3243,
0.3314

 6.4893, 0.3494,
0.3357

246.1071, 0.3235,
0.3312

 3.1448, 0.3596,
0.3372

296.3237, 0.3229,

 1.2078, 0.3775,

0.3311

352.9450, 0.3223,
0.3310

0.3394

0.0681, 0.7599,
0.2401

0.0000, 0.0000,
0.0000

57.7772, 0.3303,
0.3325

57.7772, 0.3303,
0.3325

49.0133, 0.3514,
0.3362

67.7254, 0.3131,
0.3291

41.3823, 0.3771,
0.3400

78.8917, 0.2990,
0.3259

34.8399, 0.4082,
0.3437

91.1543, 0.2887,
0.3256

29.3365, 0.4448,
0.3471

93.1891, 0.2889,
0.3289

■ 24.8183, 0.4863,
0.3494

■ 21.2268, 0.5303,
0.3500

■ 18.4969, 0.5724,
0.3484

■ 16.5554, 0.6067,
0.3441

■ 15.3309, 0.6290,
0.3387

Harmonies

Analogous

The Analogous color harmony consists of three colors that are next to each other on the color wheel.



57.7772, 0.3246, 0.3242



57.7772, 0.3303, 0.3325



57.7772, 0.3312, 0.3400

Triad

The Triadic color harmony groups three colors that are evenly spaced from another and form a triangle on the color wheel.



57.7772, 0.3303, 0.3325



57.7772, 0.3095, 0.3412



57.7772, 0.2985, 0.3134

Complementary

The Complementary color scheme is a pair of colors which are on the opposite of each other on the color wheel.



57.7772, 0.3303, 0.3325



63.3558, 0.2970, 0.3255

Split Complementary

Split-complementary colors differ from the complementary color scheme. The scheme consists of three colors, the original color and two neighbors of the complement color.



57.7772, 0.2946, 0.3177



57.7772, 0.3303, 0.3325



57.7772, 0.3009, 0.3338

Square

The Square scheme is like the rectangle color scheme, but the four colors are evenly spaced on the color wheel.



57.7772, 0.3303, 0.3325



57.7772, 0.3190, 0.3453



57.7772, 0.2955, 0.3251



57.7772, 0.3062, 0.3133

Rectangle

The Rectangle color scheme consists of four colors that form a rectangle on the color wheel.



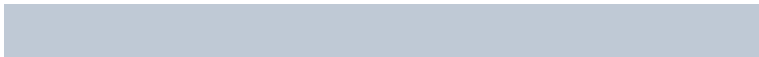
57.7772, 0.3303, 0.3325



57.7772, 0.3289, 0.3436



57.7772, 0.2955, 0.3251



57.7772, 0.2967, 0.3144

Sweetspot

The Sweet Spot groups the original color and five complimentary colors.



57.7797, 0.3303, 0.3325



95.3682, 0.3176, 0.3300



57.3584, 0.3161, 0.3073



20.1537, 0.3189, 0.3303



0.0000, 0.0000, 0.0000



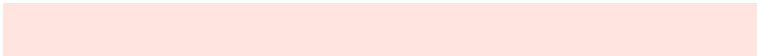
21.4041, 0.3127, 0.3290

Same Dimension

The Same Dimension uses a secret algorithm to generate beautiful new colors.



57.7797, 0.3303, 0.3325



82.4458, 0.3340, 0.3332



62.9028, 0.3289, 0.3450



12.6887, 0.3288, 0.3322



9.2576, 0.6272, 0.3402



0.6484, 0.5998, 0.3619

Inverse Universe

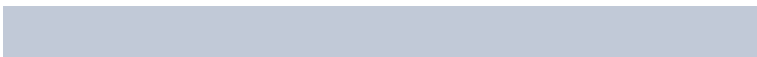
The Inverse Universe completely reimagines the original color for something new.



63.3558, 0.2970, 0.3255



92.0407, 0.2942, 0.3248



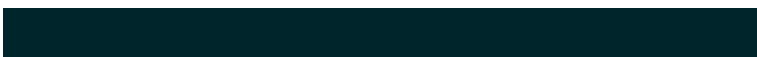
58.0625, 0.2969, 0.3124



13.8082, 0.2983, 0.3258



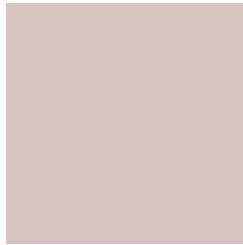
24.0382, 0.2128, 0.2859



1.5309, 0.2150, 0.2941

Previews

White Background



This preview shows how the Yxy color 57.7772, 0.3303, 0.3325 looks on a white background.

Color Contrast Check

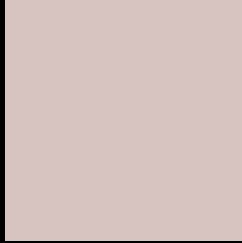
Large Text (above 18pt) WCAG AA × Fail

Any Text WCAG AA × Fail

Large Text (above 18pt) WCAG AAA × Fail

Any Text WCAG AAA × Fail

Black Background



This preview shows how the Yxy color 57.7772, 0.3303, 0.3325 looks on a black background.

Color Contrast Check

Large Text (above 18pt) WCAG AA ✓ Pass

Any Text WCAG AA ✓ Pass

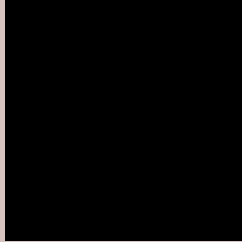
Large Text (above 18pt) WCAG AAA ✓ Pass

Any Text WCAG AAA ✓ Pass

If you want to check with other color combinations, try the [Color Contrast Checker](#).

Yxy 57.7772, 0.3303, 0.3325

Background



This preview shows how black text looks on a background with the Yxy color 57.7772, 0.3303, 0.3325.



This preview shows how white text looks on a background with the Yxy color 57.7772, 0.3303, 0.3325.

Color Blindness Simulation

Color vision deficiency is a very complex topic, and I could not describe the different causes any better than Wikipedia does, so if you want to learn more, you should check out their [article about color blindness](#).

Dichromacy



Original Color

57.7772, 0.3303, 0.3325

Protanopia

57.7661, 0.3204, 0.3338

Deuteranopia

57.5646, 0.3357, 0.3279



Tritanopia

57.9387, 0.3199, 0.3120

Trichromacy



Original Color

57.7772, 0.3303, 0.3325

Protanomaly

57.8385, 0.3244, 0.3337

Deuteranomaly

57.5387, 0.3331, 0.3291

Tritanomaly

57.9409, 0.3236, 0.3199

Monochromacy



Original Color

57.7772, 0.3303, 0.3325

Achromatopsia

58.4078, 0.3127, 0.3290

Achromatomaly

58.0459, 0.3190, 0.3302

CSS Examples

Text

The CSS property to change the color of the text to Yxy 57.7772, 0.3303, 0.3325 is called "color". The color property can be set on classes, ids or directly on the HTML element.

This example shows how text in the color `rgb(215, 196, 193)` looks like.

```
.text, #text, p{  
    color:rgb(215, 196, 193)  
}
```

If you want to add a text shadow in that color use the text-shadow property, you can generate a text shadow directly with our [CSS Text Shadow Generator](#).

Here you see how black text with a 4 pixel rgb(215, 196, 193) colored shadow looks like.

```
.shadow{ text-shadow: 4px 4px 2px rgb(215, 196, 193) }
```

Border

The CSS property to change the border of an element to Yxy 57.7772, 0.3303, 0.3325 is called "border". The border property can be set on classes, ids or directly on the HTML element.

This example shows the color as border, it can be applied via the CSS property "border" or "border-color".

```
.border, #border, table{ border:4px solid rgb(215, 196, 193) }
```

If only the border color should be changed use the property border-color.

```
.border{ border-color:rgb(215, 196, 193) }
```

If you want to add a box shadow in that color use:

Here you see how a box with a 4 pixel rgb(215, 196, 193) colored shadow looks like.

```
.boxshadow{ -moz-box-shadow:4px 4px 4px  
4px rgb(215, 196, 193); -webkit-box-  
shadow:4px 4px 4px 4px rgb(215, 196, 193);  
box-shadow:4px 4px 4px 4px rgb(215, 196,  
193) }
```


Background

The CSS property to change the background color of an element to Yxy 57.7772, 0.3303, 0.3325 is called "background". The background property can be set on classes, ids or directly on the HTML element.

```
.background, #background, body{  
background: rgb(215, 196, 193) }
```

If only the background color should be changed can be used:

```
.background{ background-color: rgb(215,  
196, 193) }
```

This example shows the color as background, it is applied via the CSS property "background".

To optimize and compress your CSS code, you can use our [online CSS compressor and optimizer](#) based on csstidy. If you want to create a linear or radial gradient as background or border, check our [CSS Gradient Generator](#).

Hey! You found this booklet interesting? Support Converting Colors with the new Membership Option!

The pro membership hides all ads, plus gives you double the colors in the color bucket, and more awesome pro features!

[Learn more, Memberships starting at \\$2.50/m!](#)

**Follow me
on Twitter!**

@ConvertingColor