

Converting Colors

Yxy(57.8725, 0.3398, 0.3439)

Have a look what the booklet for
Yxy(57.8725, 0.3398, 0.3439)
contains.

Yxy(57.8042, 0.3406, 0.3442)	3
Conversions	4
Details	6
Harmonies	12
Previews	24
Color Blindness Simulation	27
CSS Examples	30

Color

Yxy(57.8042, 0.3406, 0.3442)

Conversions

Conversions Part 1

Format	Color
Hex	DAC4B7
RGB	218, 196, 183
RGB Percent	85%, 77%, 72%
CMY	0.1451, 0.2313, 0.2824
CMYK	0.00, 0.10, 0.16, 0.15
HSL	22°, 32%, 79%
HSV	22°, 16%, 85%
XYZ	57.1996, 57.8042, 52.9340
YIQ	201.0960, 17.2850, 0.6210

Conversions

Conversions Part 2

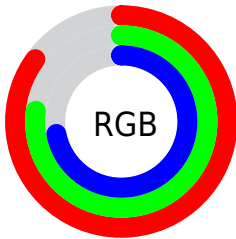
Format	Color
R _Y B	218, 204, 183
Decimal	14337207
CIE Lab	80.63, 5.63, 9.34
CIE LCh	81, 10.908, 58.921
Yxy	57.8042, 0.3406, 0.3442
Android (android.graphics.Color)	4292527287 (0xFFDAC4B7)
YUV	201.0960, -8.9213, 14.8248
Hunter-Lab	76.0291, 1.2416, 11.9407

Details

The Yxy color **57.8042, 0.3406, 0.3442** is a light color, and the websafe version is hex **CCCCCC**. A complement of this color would be **58.7816, 0.2879, 0.3133**, and the grayscale version is **58.5206, 0.3127, 0.3290**.

A 20% lighter version of the original color is **97.7426, 0.3222, 0.3425**, and **28.7442, 0.3483, 0.3476** is the 20% darker color. If you saturate the color by 10%, you get **51.0695, 0.3618, 0.3543**, and if you desaturate by 10%, it is **65.2486, 0.3224, 0.3346**.

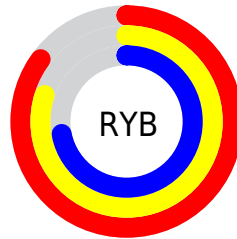
Distribution



Red (85%)

Green (77%)

Blue (72%)



Red (85%)

Yellow (80%)

Blue (72%)

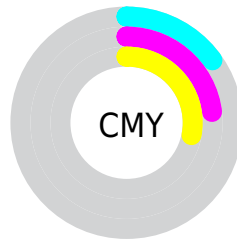


Cyan (0%)

Magenta (10%)

Yellow (16%)

Black (15%)



Cyan (15%)


Magenta (23%)

Yellow (28%)

Brightness & Saturation Gradients


These gradients show how the Yxy color 57.8042, 0.3406, 0.3442 changes by changing the brightness by 10 percent. The first figure shows a shift by +10% for each color and the second figure -10%.

Similar to the brightness gradients but the following saturation gradients show a change of the Yxy color 57.8042, 0.3406, 0.3442 by changing the saturation by 10% instead.


 57.8042, 0.3406,
0.3442

 57.8042, 0.3406,
0.3442


416.4559, 0.3271,
0.3370

 41.6513, 0.3438,
0.3459


 101.6377, 0.3358,
0.3417

 28.8283, 0.3480,
0.3480


130.0870, 0.3339,
0.3407

 18.9510, 0.3533,
0.3507


163.4039, 0.3324,
0.3399

 11.6349, 0.3605,
0.3542

201.9728, 0.3310,
0.3391

 6.4956, 0.3709,
0.3592

246.1780, 0.3299,
0.3385

 3.1487, 0.3868,
0.3664

296.4040, 0.3288,

 1.2098, 0.4194,

0.3379

353.0352, 0.3279,
0.3375

0.3822

0.0697, 0.7450,
0.2550

0.0000, 0.0000,
0.0000

57.8042, 0.3406,
0.3442

57.8042, 0.3406,
0.3442

51.0695, 0.3618,
0.3543

65.2486, 0.3224,
0.3346

45.0152, 0.3864,
0.3645

73.4154, 0.3069,
0.3255

39.6214, 0.4145,
0.3744

82.3267, 0.2937,
0.3172

34.8640, 0.4457,
0.3829

90.9844, 0.2904,
0.3246

■ 30.7175, 0.4790,
0.3891

■ 93.6457, 0.2906,
0.3289

■ 27.1543, 0.5126,
0.3917

■ 24.1442, 0.5439,
0.3894

■ 21.6528, 0.5701,
0.3819

■ 20.7997, 0.5793,
0.3782

Harmonies

Analogous

The Analogous color harmony consists of three colors that are next to each other on the color wheel.



57.8042, 0.3384, 0.3327



57.8042, 0.3406, 0.3442



57.8042, 0.3351, 0.3520

Triad

The Triadic color harmony groups three colors that are evenly spaced from another and form a triangle on the color wheel.



57.8042, 0.3406, 0.3442



57.8042, 0.2963, 0.3375



57.8042, 0.3015, 0.3054

Complementary

The Complementary color scheme is a pair of colors which are on the opposite of each other on the color wheel.



57.8042, 0.3406, 0.3442



58.7816, 0.2879, 0.3133

Split Complementary

Split-complementary colors differ from the complementary color scheme. The scheme consists of three colors, the original color and two neighbors of the complement color.



57.8042, 0.2906, 0.3062



57.8042, 0.3406, 0.3442



57.8042, 0.2877, 0.3244

Square

The Square scheme is like the rectangle color scheme, but the four colors are evenly spaced on the color wheel.



57.8042, 0.3406, 0.3442



57.8042, 0.3094, 0.3484



57.8042, 0.2856, 0.3130



57.8042, 0.3156, 0.3107

Rectangle

The Rectangle color scheme consists of four colors that form a rectangle on the color wheel.



57.8042, 0.3406, 0.3442



57.8042, 0.3279, 0.3539



57.8042, 0.2856, 0.3130



57.8042, 0.2973, 0.3050

Sweetspot

The Sweet Spot groups the original color and five complimentary colors.



57.8068, 0.3406, 0.3442



94.2018, 0.3207, 0.3336



53.1827, 0.3247, 0.3036



19.9932, 0.3219, 0.3343



0.0000, 0.0000, 0.0000



21.4041, 0.3127, 0.3290

Same Dimension

The Same Dimension uses a secret algorithm to generate beautiful new colors.



57.8068, 0.3406, 0.3442



79.3588, 0.3469, 0.3473



66.0803, 0.3375, 0.3636



13.8407, 0.3282, 0.3377



12.6507, 0.5767, 0.3803



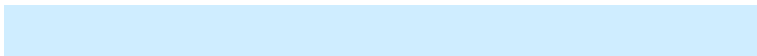
0.9815, 0.5459, 0.4048

Inverse Universe

The Inverse Universe completely reimagines the original color for something new.



58.7816, 0.2879, 0.3133



80.9801, 0.2830, 0.3100



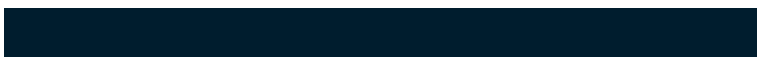
50.9468, 0.2869, 0.2919



13.9734, 0.2982, 0.3201



13.9536, 0.1897, 0.2030



1.0670, 0.1961, 0.2258

Previews

White Background



This preview shows how the Yxy color 57.8042, 0.3406, 0.3442 looks on a white background.

Color Contrast Check

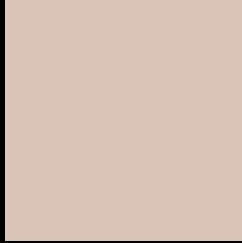
Large Text (above 18pt) WCAG AA × Fail

Any Text WCAG AA × Fail

Large Text (above 18pt) WCAG AAA × Fail

Any Text WCAG AAA × Fail

Black Background



This preview shows how the Yxy color 57.8042, 0.3406, 0.3442 looks on a black background.

Color Contrast Check

Large Text (above 18pt) WCAG AA ✓ Pass

Any Text WCAG AA ✓ Pass

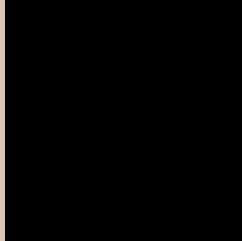
Large Text (above 18pt) WCAG AAA ✓ Pass

Any Text WCAG AAA ✓ Pass

If you want to check with other color combinations, try the [Color Contrast Checker](#).

Yxy 57.8042, 0.3406, 0.3442

Background



This preview shows how black text looks on a background with the Yxy color 57.8042, 0.3406, 0.3442.



This preview shows how white text looks on a background with the Yxy color 57.8042, 0.3406, 0.3442.

Color Blindness Simulation

Color vision deficiency is a very complex topic, and I could not describe the different causes any better than Wikipedia does, so if you want to learn more, you should check out their [article about color blindness](#).

Dichromacy



Original Color

57.8042, 0.3406, 0.3442

Protanopia

57.6150, 0.3295, 0.3457

Deuteranopia

57.7694, 0.3471, 0.3393



Tritanopia

57.5764, 0.3248, 0.3121

Trichromacy



Original Color

57.8042, 0.3406, 0.3442

Protanomaly

57.6977, 0.3337, 0.3456

Deuteranomaly

57.7322, 0.3444, 0.3406

Tritanomaly

57.4328, 0.3309, 0.3233

Monochromacy



Original Color

57.8042, 0.3406, 0.3442

Achromatopsia

58.4078, 0.3127, 0.3290

Achromatomaly

58.0073, 0.3227, 0.3349

CSS Examples

Text

The CSS property to change the color of the text to Yxy 57.8042, 0.3406, 0.3442 is called "color". The color property can be set on classes, ids or directly on the HTML element.

This example shows how text in the color `rgb(218, 196, 183)` looks like.

```
.text, #text, p{  
    color:rgb(218, 196, 183)  
}
```

If you want to add a text shadow in that color use the text-shadow property, you can generate a text shadow directly with our [CSS Text Shadow Generator](#).

Here you see how black text with a 4 pixel rgb(218, 196, 183) colored shadow looks like.

```
.shadow{ text-shadow: 4px 4px 2px rgb(218, 196, 183) }
```

Border

The CSS property to change the border of an element to Yxy 57.8042, 0.3406, 0.3442 is called "border". The border property can be set on classes, ids or directly on the HTML element.

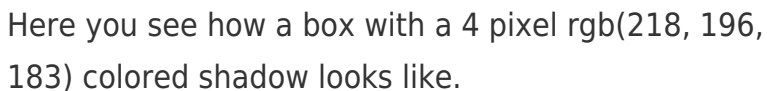
This example shows the color as border, it can be applied via the CSS property "border" or "border-color".

```
.border, #border, table{ border:4px solid rgb(218, 196, 183) }
```

If only the border color should be changed use the property border-color.

```
.border{ border-color:rgb(218, 196, 183) }
```

If you want to add a box shadow in that color use:



Here you see how a box with a 4 pixel rgb(218, 196, 183) colored shadow looks like.

```
.boxshadow{ -moz-box-shadow:4px 4px 4px 4px rgb(218, 196, 183); -webkit-box-shadow:4px 4px 4px 4px rgb(218, 196, 183); box-shadow:4px 4px 4px 4px rgb(218, 196, 183) }
```


Background

The CSS property to change the background color of an element to Yxy 57.8042, 0.3406, 0.3442 is called "background". The background property can be set on classes, ids or directly on the HTML element.

```
.background, #background, body{  
background: rgb(218, 196, 183) }
```

If only the background color should be changed can be used:

```
.background{ background-color: rgb(218,  
196, 183) }
```

This example shows the color as background, it is applied via the CSS property "background".

To optimize and compress your CSS code, you can use our [online CSS compressor and optimizer](#) based on csstidy. If you want to create a linear or radial gradient as background or border, check our [CSS Gradient Generator](#).

Hey! You found this booklet interesting? Support Converting Colors with the new Membership Option!

The pro membership hides all ads, plus gives you double the colors in the color bucket, and more awesome pro features!

[Learn more, Memberships starting at \\$2.50/m!](#)

**Follow me
on Twitter!**

@ConvertingColor