

Converting Colors

Yxy(57.9080, 0.3502, 0.3546)

Have a look what the booklet for
Yxy(57.9080, 0.3502, 0.3546)
contains.

Yxy(57.9080, 0.3502, 0.3546)	3
Conversions	4
Details	6
Harmonies	12
Previews	24
Color Blindness Simulation	27
CSS Examples	30

Color

Yxy(57.9080, 0.3502, 0.3546)

Conversions

Conversions Part 1

Format	Color
Hex	DDC4AE
RGB	221, 196, 174
RGB Percent	87%, 77%, 68%
CMY	0.1335, 0.2313, 0.3176
CMYK	0.00, 0.11, 0.21, 0.13
HSL	28°, 41%, 77%
HSV	28°, 21%, 87%
XYZ	57.1895, 57.9080, 48.2077
YIQ	200.9670, 21.9620, -1.5420

Conversions

Conversions Part 2

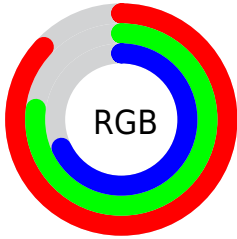
Format	Color
RYB	221, 215, 174
Decimal	14533806
CIELab	80.69, 5.36, 14.27
CIELCh	81, 15.241, 69.424
Yxy	57.9080, 0.3502, 0.3546
Android (android.graphics.Color)	4292723886 (0xFFDDC4AE)
YUV	200.9670, -13.2947, 17.5689
Hunter-Lab	76.0973, 0.9779, 15.7079

Details

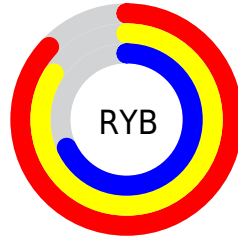
The Yxy color $57.9080, 0.3502, 0.3546$ is a light color, and the websafe version is hex `CCCCCC`. A complement of this color would be $55.0372, 0.2793, 0.3020$, and the grayscale version is $58.4598, 0.3127, 0.3290$.

A 20% lighter version of the original color is $97.2237, 0.3276, 0.3513$, and $28.7505, 0.3592, 0.3598$ is the 20% darker color. If you saturate the color by 10%, you get $52.0289, 0.3719, 0.3674$, and if you desaturate by 10%, it is $64.3482, 0.3312, 0.3422$.

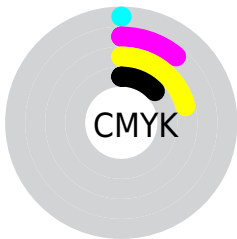
Distribution



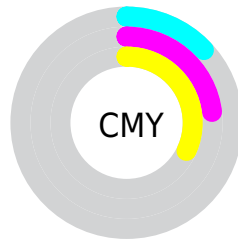
- Red (87%)
- Green (77%)
- Blue (68%)



- Red (87%)
- Yellow (84%)
- Blue (68%)



- Cyan (0%)
- Magenta (11%)
- Yellow (21%)
- Black (13%)





- Cyan (13%)
- Magenta (23%)
- Yellow (32%)

Brightness & Saturation Gradients

These gradients show how the Yxy color 57.9080, 0.3502, 0.3546 changes by changing the brightness by 10 percent. The first figure shows a shift by +10% for each color and the second figure -10%.


Similar to the brightness gradients but the following saturation gradients show a change of the Yxy color 57.9080, 0.3502, 0.3546 by changing the saturation by 10% instead.

 57.9080, 0.3502,
0.3546

 57.9080, 0.3502,
0.3546


416.8430, 0.3321,
0.3425

 41.7347, 0.3545,
0.3574


 101.7889, 0.3437,
0.3503

 28.8936, 0.3600,
0.3610


130.2652, 0.3413,
0.3487

 19.0003, 0.3671,
0.3655


163.6114, 0.3392,
0.3473

 11.6705, 0.3767,
0.3714

202.2117, 0.3374,
0.3461

 6.5198, 0.3903,
0.3795

246.4507, 0.3358,
0.3450

 3.1636, 0.4109,
0.3912

296.7126, 0.3344,

 1.2177, 0.4680,

0.3441

0.4295

353.3819, 0.3332,
0.3432

0.0761, 0.7274,
0.2726

0.0000, 0.0000,
0.0000

57.9080, 0.3502,
0.3546

57.9080, 0.3502,
0.3546

52.0289, 0.3719,
0.3674

64.3482, 0.3312,
0.3422

46.6868, 0.3962,
0.3800

71.3573, 0.3146,
0.3304

41.8670, 0.4230,
0.3917

78.9527, 0.3003,
0.3194

37.5511, 0.4515,
0.4015

86.6639, 0.2919,
0.3167

■ 33.7194, 0.4806,
0.4081

■ 93.9125, 0.2923,
0.3286

■ 30.3503, 0.5085,
0.4102

■ 94.1058, 0.2923,
0.3289

■ 27.4197, 0.5332,
0.4069

■ 25.1872, 0.5516,
0.4002

Harmonies

Analogous

The Analogous color harmony consists of three colors that are next to each other on the color wheel.



57.9080, 0.3511, 0.3398



57.9080, 0.3502, 0.3546



57.9080, 0.3390, 0.3632

Triad

The Triadic color harmony groups three colors that are evenly spaced from another and form a triangle on the color wheel.



57.9080, 0.3502, 0.3546



57.9080, 0.2847, 0.3345



57.9080, 0.3036, 0.2981

Complementary

The Complementary color scheme is a pair of colors which are on the opposite of each other on the color wheel.



57.9080, 0.3502, 0.3546



55.0372, 0.2793, 0.3020

Split Complementary

Split-complementary colors differ from the complementary color scheme. The scheme consists of three colors, the original color and two neighbors of the complement color.



57.9080, 0.2864, 0.2960



57.9080, 0.3502, 0.3546



57.9080, 0.2758, 0.3163

Square

The Square scheme is like the rectangle color scheme, but the four colors are evenly spaced on the color wheel.



57.9080, 0.3502, 0.3546



57.9080, 0.3011, 0.3517



57.9080, 0.2764, 0.3024



57.9080, 0.3237, 0.3078

Rectangle

The Rectangle color scheme consists of four colors that form a rectangle on the color wheel.



57.9080, 0.3502, 0.3546



57.9080, 0.3274, 0.3638



57.9080, 0.2764, 0.3024



57.9080, 0.2973, 0.2965

Sweetspot

The Sweet Spot groups the original color and five complimentary colors.



57.9106, 0.3502, 0.3546



93.9779, 0.3223, 0.3360



49.7642, 0.3333, 0.3002



19.9786, 0.3234, 0.3368



0.0000, 0.0000, 0.0000



21.4041, 0.3127, 0.3290

Same Dimension

The Same Dimension uses a secret algorithm to generate beautiful new colors.



57.9106, 0.3502, 0.3546



75.9959, 0.3606, 0.3609



69.2909, 0.3450, 0.3801



14.0531, 0.3280, 0.3400



14.8602, 0.5491, 0.4022



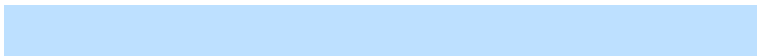
1.1342, 0.5225, 0.4233

Inverse Universe

The Inverse Universe completely reimagines the original color for something new.



55.0372, 0.2793, 0.3020



71.2649, 0.2713, 0.2948



45.0983, 0.2773, 0.2722



13.7565, 0.2982, 0.3178



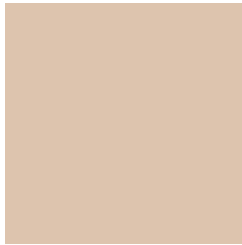
10.7034, 0.1803, 0.1690



0.8654, 0.1881, 0.1972

Previews

White Background



This preview shows how the Yxy color 57.9080, 0.3502, 0.3546 looks on a white background.

Color Contrast Check

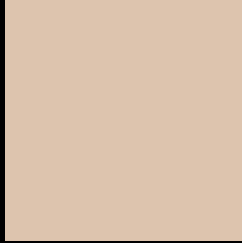
Large Text (above 18pt) WCAG AA × Fail

Any Text WCAG AA × Fail

Large Text (above 18pt) WCAG AAA × Fail

Any Text WCAG AAA × Fail

Black Background



This preview shows how the Yxy color 57.9080, 0.3502, 0.3546 looks on a black background.

Color Contrast Check

Large Text (above 18pt) WCAG AA ✓ Pass

Any Text WCAG AA ✓ Pass

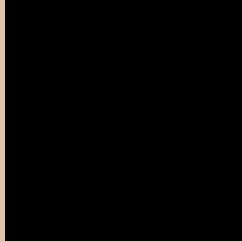
Large Text (above 18pt) WCAG AAA ✓ Pass

Any Text WCAG AAA ✓ Pass

If you want to check with other color combinations, try the [Color Contrast Checker](#).

Yxy 57.9080, 0.3502, 0.3546

Background



This preview shows how black text looks on a background with the Yxy color 57.9080, 0.3502, 0.3546.



This preview shows how white text looks on a background with the Yxy color 57.9080, 0.3502, 0.3546.

Color Blindness Simulation

Color vision deficiency is a very complex topic, and I could not describe the different causes any better than Wikipedia does, so if you want to learn more, you should check out their [article about color blindness](#).

Dichromacy



Original Color

57.9080, 0.3502, 0.3546

Protanopia

58.1448, 0.3387, 0.3576

Deuteranopia

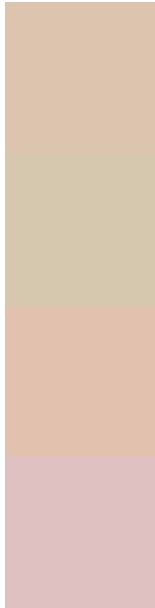
57.8931, 0.3569, 0.3495



Tritanopia

57.7254, 0.3290, 0.3122

Trichromacy



Original Color

57.9080, 0.3502, 0.3546

Protanomaly

58.2381, 0.3429, 0.3573

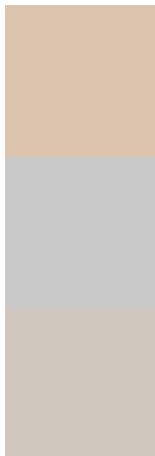
Deuteranomaly

57.8475, 0.3541, 0.3508

Tritanomaly

57.8823, 0.3374, 0.3279

Monochromacy



Original Color

57.9080, 0.3502, 0.3546

Achromatopsia

58.4078, 0.3127, 0.3290

Achromatomaly

58.0183, 0.3258, 0.3385

CSS Examples

Text

The CSS property to change the color of the text to Yxy 57.9080, 0.3502, 0.3546 is called "color". The color property can be set on classes, ids or directly on the HTML element.

This example shows how text in the color `rgb(221, 196, 174)` looks like.

```
.text, #text, p{  
    color:rgb(221, 196, 174)  
}
```

If you want to add a text shadow in that color use the text-shadow property, you can generate a text shadow directly with our [CSS Text Shadow Generator](#).

Here you see how black text with a 4 pixel rgb(221, 196, 174) colored shadow looks like.

```
.shadow{ text-shadow: 4px 4px 2px rgb(221, 196, 174) }
```

Border

The CSS property to change the border of an element to Yxy 57.9080, 0.3502, 0.3546 is called "border". The border property can be set on classes, ids or directly on the HTML element.

This example shows the color as border, it can be applied via the CSS property "border" or "border-color".

```
.border, #border, table{ border:4px solid rgb(221, 196, 174) }
```

If only the border color should be changed use the property `border-color`.

```
.border{ border-color:rgb(221, 196, 174) }
```

If you want to add a box shadow in that color use:

Here you see how a box with a 4 pixel `rgb(221, 196, 174)` colored shadow looks like.

```
.boxshadow{ -moz-box-shadow:4px 4px 4px  
4px rgb(221, 196, 174); -webkit-box-  
shadow:4px 4px 4px 4px rgb(221, 196, 174);  
box-shadow:4px 4px 4px 4px rgb(221, 196,  
174) }
```


Background

The CSS property to change the background color of an element to Yxy 57.9080, 0.3502, 0.3546 is called "background". The background property can be set on classes, ids or directly on the HTML element.

```
.background, #background, body{  
background: rgb(221, 196, 174) }
```

If only the background color should be changed can be used:

```
.background{ background-color: rgb(221,  
196, 174) }
```

This example shows the color as background, it is applied via the CSS property "background".

To optimize and compress your CSS code, you can use our [online CSS compressor and optimizer](#) based on csstidy. If you want to create a linear or radial gradient as background or border, check our [CSS Gradient Generator](#).

Hey! You found this booklet interesting? Support Converting Colors with the new Membership Option!

The pro membership hides all ads, plus gives you double the colors in the color bucket, and more awesome pro features!

[Learn more, Memberships starting at \\$2.50/m!](#)

**Follow me
on Twitter!**

@ConvertingColor