

Converting Colors

Yxy(57.9119, 0.3581, 0.3465)

Have a look what the booklet for
Yxy(57.9119, 0.3581, 0.3465)
contains.

Yxy(58.0294, 0.3581, 0.3460)	3
Conversions	4
Details	6
Harmonies	12
Previews	24
Color Blindness Simulation	27
CSS Examples	30

Color

Yxy(58.0294, 0.3581, 0.3460)

Conversions

Conversions Part 1

Format	Color
Hex	E8C0B1
RGB	232, 192, 177
RGB Percent	91%, 75%, 69%
CMY	0.0903, 0.2470, 0.3059
CMYK	0.00, 0.17, 0.24, 0.09
HSL	16°, 54%, 80%
HSV	16°, 24%, 91%
XYZ	60.0588, 58.0294, 49.6269
YIQ	202.2500, 28.6550, 3.8150

Conversions

Conversions Part 2

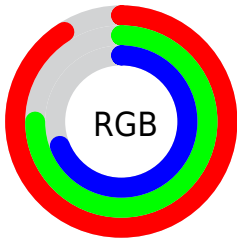
Format	Color
R _Y B	232, 198, 177
Decimal	15253681
CIE Lab	80.76, 12.01, 12.90
CIE LCh	81, 17.628, 47.055
Yxy	58.0294, 0.3581, 0.3460
Android (android.graphics.Color)	4293443761 (0xFFE8C0B1)
YUV	202.2500, -12.4482, 26.0907
Hunter-Lab	76.1770, 7.4214, 14.6984

Details

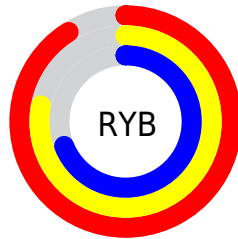
The Yxy color **58.0294, 0.3581, 0.3460** is a light color, and the websafe version is hex **FFCCCC**. A complement of this color would be **64.7772, 0.2763, 0.3113**, and the grayscale version is **59.2930, 0.3127, 0.3290**.

A 20% lighter version of the original color is **94.2780, 0.3263, 0.3436**, and **28.8623, 0.3712, 0.3498** is the 20% darker color. If you saturate the color by 10%, you get **50.1982, 0.3836, 0.3536**, and if you desaturate by 10%, it is **66.8715, 0.3366, 0.3385**.

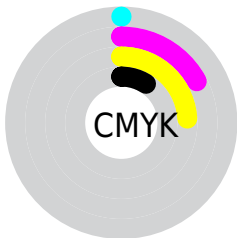
Distribution



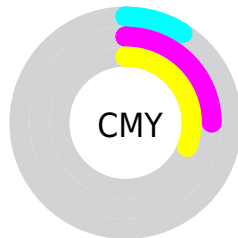
- Red (91%)
- Green (75%)
- Blue (69%)



- Red (91%)
- Yellow (78%)
- Blue (69%)



- Cyan (0%)
- Magenta (17%)
- Yellow (24%)
- Black (9%)





- Cyan (9%)
- Magenta (25%)
- Yellow (31%)

Brightness & Saturation Gradients


These gradients show how the Yxy color 58.0294, 0.3581, 0.3460 changes by changing the brightness by 10 percent. The first figure shows a shift by +10% for each color and the second figure -10%.

Similar to the brightness gradients but the following saturation gradients show a change of the Yxy color 58.0294, 0.3581, 0.3460 by changing the saturation by 10% instead.


 58.0294, 0.3581,
0.3460

 58.0294, 0.3581,
0.3460


417.2955, 0.3361,
0.3382

 41.8323, 0.3634,
0.3477

 101.9657, 0.3502,
0.3433

 28.9700, 0.3701,
0.3499


130.4736, 0.3472,
0.3423

 19.0581, 0.3788,
0.3525


163.8540, 0.3447,
0.3414

 11.7123, 0.3906,
0.3559

202.4911, 0.3425,
0.3406

 6.5481, 0.4073,
0.3602

246.7694, 0.3406,
0.3399

 3.1811, 0.4330,
0.3658

297.0733, 0.3389,

 1.2270, 0.4919,

0.3393

0.3845

353.7872, 0.3374,
0.3387

0.0836, 0.8168,
0.1832

0.0000, 0.0000,
0.0000

58.0294, 0.3581,
0.3460

58.0294, 0.3581,
0.3460

50.1982, 0.3836,
0.3536

66.8715, 0.3366,
0.3385

43.3335, 0.4134,
0.3610

76.7511, 0.3186,
0.3315

37.3992, 0.4474,
0.3675

87.7037, 0.3035,
0.3249

32.3539, 0.4848,
0.3720

95.8925, 0.2987,
0.3290

■ 28.1528, 0.5234,
0.3735

■ 24.7469, 0.5598,
0.3709

■ 22.0812, 0.5899,
0.3638

■ 20.7481, 0.6049,
0.3579

Harmonies

Analogous

The Analogous color harmony consists of three colors that are next to each other on the color wheel.



58.0294, 0.3497, 0.3267



58.0294, 0.3581, 0.3460



58.0294, 0.3538, 0.3618

Triad

The Triadic color harmony groups three colors that are evenly spaced from another and form a triangle on the color wheel.



58.0294, 0.3581, 0.3460



58.0294, 0.2938, 0.3507



58.0294, 0.2867, 0.2907

Complementary

The Complementary color scheme is a pair of colors which are on the opposite of each other on the color wheel.



58.0294, 0.3581, 0.3460



64.7772, 0.2763, 0.3113

Split Complementary

Split-complementary colors differ from the complementary color scheme. The scheme consists of three colors, the original color and two neighbors of the complement color.



58.0294, 0.2729, 0.2954



58.0294, 0.3581, 0.3460



58.0294, 0.2769, 0.3297

Square

The Square scheme is like the rectangle color scheme, but the four colors are evenly spaced on the color wheel.



58.0294, 0.3581, 0.3460



58.0294, 0.3162, 0.3656



58.0294, 0.2694, 0.3094



58.0294, 0.3079, 0.2956

Rectangle

The Rectangle color scheme consists of four colors that form a rectangle on the color wheel.



58.0294, 0.3581, 0.3460



58.0294, 0.3444, 0.3681



58.0294, 0.2694, 0.3094



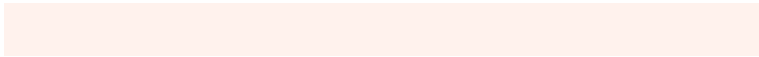
58.0294, 0.2811, 0.2912

Sweetspot

The Sweet Spot groups the original color and five complimentary colors.



58.0321, 0.3581, 0.3460



90.9028, 0.3243, 0.3338



53.6210, 0.3272, 0.2850



19.2956, 0.3253, 0.3342



0.0000, 0.0000, 0.0000



21.4041, 0.3127, 0.3290

Same Dimension

The Same Dimension uses a secret algorithm to generate beautiful new colors.



58.0321, 0.3581, 0.3460



67.4644, 0.3689, 0.3494



71.0681, 0.3514, 0.3751



15.0054, 0.3286, 0.3355



11.7006, 0.6021, 0.3601



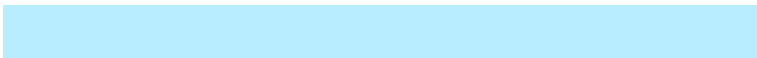
1.0160, 0.5734, 0.3829

Inverse Universe

The Inverse Universe completely reimagines the original color for something new.



64.7772, 0.2763, 0.3113



77.0628, 0.2697, 0.3076



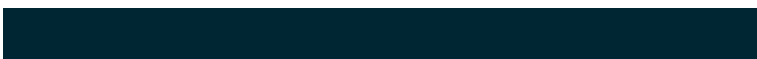
51.9226, 0.2736, 0.2782



15.6356, 0.2981, 0.3224



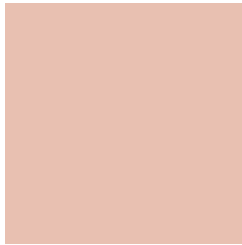
19.1314, 0.1994, 0.2380



1.5665, 0.2036, 0.2528

Previews

White Background



This preview shows how the Yxy color 58.0294, 0.3581, 0.3460 looks on a white background.

Color Contrast Check

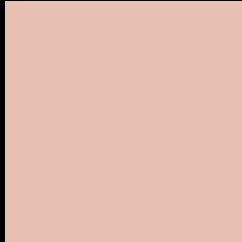
Large Text (above 18pt) WCAG AA × Fail

Any Text WCAG AA × Fail

Large Text (above 18pt) WCAG AAA × Fail

Any Text WCAG AAA × Fail

Black Background



This preview shows how the Yxy color 58.0294, 0.3581, 0.3460 looks on a black background.

Color Contrast Check

Large Text (above 18pt) WCAG AA ✓ Pass

Any Text WCAG AA ✓ Pass

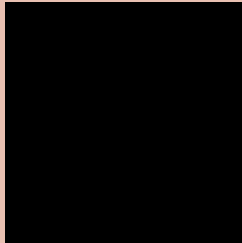
Large Text (above 18pt) WCAG AAA ✓ Pass

Any Text WCAG AAA ✓ Pass

If you want to check with other color combinations, try the [Color Contrast Checker](#).

Yxy 58.0294, 0.3581, 0.3460

Background



This preview shows how black text looks on a background with the Yxy color 58.0294, 0.3581, 0.3460.



This preview shows how white text looks on a background with the Yxy color 58.0294, 0.3581, 0.3460.

Color Blindness Simulation

Color vision deficiency is a very complex topic, and I could not describe the different causes any better than Wikipedia does, so if you want to learn more, you should check out their [article about color blindness](#).

Dichromacy



Original Color

58.0294, 0.3581, 0.3460

Protanopia

58.2001, 0.3340, 0.3516

Deuteranopia

57.9723, 0.3553, 0.3472



Tritanopia

57.9404, 0.3401, 0.3126

Trichromacy



Original Color

58.0294, 0.3581, 0.3460

Protanomaly

57.9795, 0.3419, 0.3489

Deuteranomaly

58.1372, 0.3562, 0.3472

Tritanomaly

57.7827, 0.3464, 0.3236

Monochromacy



Original Color

58.0294, 0.3581, 0.3460

Achromatopsia

59.0619, 0.3127, 0.3290

Achromatomaly

58.3846, 0.3284, 0.3349

CSS Examples

Text

The CSS property to change the color of the text to Yxy 58.0294, 0.3581, 0.3460 is called "color". The color property can be set on classes, ids or directly on the HTML element.

This example shows how text in the color `rgb(232, 192, 177)` looks like.

```
.text, #text, p{  
    color:rgb(232, 192, 177)  
}
```

If you want to add a text shadow in that color use the text-shadow property, you can generate a text shadow directly with our [CSS Text Shadow Generator](#).

Here you see how black text with a 4 pixel rgb(232, 192, 177) colored shadow looks like.

```
.shadow{ text-shadow: 4px 4px 2px rgb(232, 192, 177) }
```

Border

The CSS property to change the border of an element to Yxy 58.0294, 0.3581, 0.3460 is called "border". The border property can be set on classes, ids or directly on the HTML element.

This example shows the color as border, it can be applied via the CSS property "border" or "border-color".

```
.border, #border, table{ border:4px solid rgb(232, 192, 177) }
```

If only the border color should be changed use the property `border-color`.

```
.border{ border-color:rgb(232, 192, 177) }
```

If you want to add a box shadow in that color use:

Here you see how a box with a 4 pixel `rgb(232, 192, 177)` colored shadow looks like.

```
.boxshadow{ -moz-box-shadow:4px 4px 4px  
4px rgb(232, 192, 177); -webkit-box-  
shadow:4px 4px 4px 4px rgb(232, 192, 177);  
box-shadow:4px 4px 4px 4px rgb(232, 192,  
177) }
```


Background

The CSS property to change the background color of an element to Yxy 58.0294, 0.3581, 0.3460 is called "background". The background property can be set on classes, ids or directly on the HTML element.

```
.background, #background, body{  
background: rgb(232, 192, 177) }
```

If only the background color should be changed can be used:

```
.background{ background-color: rgb(232,  
192, 177) }
```

This example shows the color as background, it is applied via the CSS property "background".

To optimize and compress your CSS code, you can use our [online CSS compressor and optimizer](#) based on csstidy. If you want to create a linear or radial gradient as background or border, check our [CSS Gradient Generator](#).

Hey! You found this booklet interesting? Support Converting Colors with the new Membership Option!

The pro membership hides all ads, plus gives you double the colors in the color bucket, and more awesome pro features!

[Learn more, Memberships starting at \\$2.50/m!](#)

**Follow me
on Twitter!**

@ConvertingColor