

Converting Colors

$Y_{xy}(58.0376, 0.3207, 0.3206)$

Have a look what the booklet for
Yxy(58.0376, 0.3207, 0.3206)
contains.

Yxy(57.9378, 0.3211, 0.3209)	3
Conversions	4
Details	6
Harmonies	12
Previews	24
Color Blindness Simulation	27
CSS Examples	30

Color

Yxy(57.9378, 0.3211, 0.3209)

Conversions

Conversions Part 1

Format	Color
Hex	D5C4CB
RGB	213, 196, 203
RGB Percent	84%, 77%, 80%
CMY	0.1645, 0.2314, 0.2039
CMYK	0.00, 0.08, 0.05, 0.16
HSL	335°, 17%, 80%
HSV	335°, 8%, 84%
XYZ	57.9739, 57.9378, 64.6361
YIQ	201.8810, 7.8850, 5.7810

Conversions

Conversions Part 2

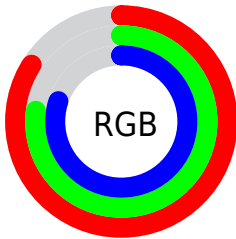
Format	Color
R _Y B	213, 196, 203
Decimal	14009547
CIE Lab	80.70, 7.21, -1.36
CIE LCh	81, 7.333, 349.343
Yxy	57.9378, 0.3211, 0.3209
Android (android.graphics.Color)	4292199627 (0xFFD5C4CB)
YUV	201.8810, 0.5517, 9.7514
Hunter-Lab	76.1169, 2.7488, 2.9346

Details

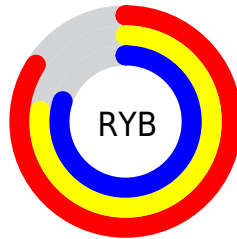
The Yxy color **57.9378, 0.3211, 0.3209** is a light color, and the websafe version is hex **CCCCCC**. A complement of this color would be **63.8098, 0.3050, 0.3372**, and the grayscale version is **58.9834, 0.3127, 0.3290**.

A 20% lighter version of the original color is **98.7306, 0.3128, 0.3271**, and **28.7850, 0.3229, 0.3183** is the 20% darker color. If you saturate the color by 10%, you get **48.4287, 0.3336, 0.3102**, and if you desaturate by 10%, it is **68.8650, 0.3108, 0.3309**.

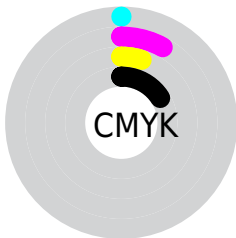
Distribution



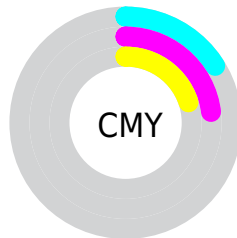
- Red (84%)
- Green (77%)
- Blue (80%)



- Red (84%)
- Yellow (77%)
- Blue (80%)



- Cyan (0%)
- Magenta (8%)
- Yellow (5%)
- Black (16%)



- Cyan (16%)
- Magenta (23%)
- Yellow (20%)

Brightness & Saturation Gradients

These gradients show how the Yxy color 57.9378, 0.3211, 0.3209 changes by changing the brightness by 10 percent. The first figure shows a shift by +10% for each color and the second figure -10%.

Similar to the brightness gradients but the following saturation gradients show a change of the Yxy color 57.9378, 0.3211, 0.3209 by changing the saturation by 10% instead.

■ 57.9378, 0.3211,
0.3209

■ 57.9378, 0.3211,
0.3209

416.9541, 0.3171,
0.3248

■ 41.7586, 0.3221,
0.3200

101.8323, 0.3197,
0.3223

■ 28.9124, 0.3233,
0.3188

130.3164, 0.3191,
0.3228

■ 19.0145, 0.3248,
0.3173

163.6709, 0.3187,
0.3233

■ 11.6808, 0.3270,
0.3153

202.2803, 0.3183,
0.3236

■ 6.5267, 0.3300,
0.3124

246.5289, 0.3179,
0.3240

■ 3.1679, 0.3346,
0.3080

296.8012, 0.3176,

■ 1.2200, 0.3426,

0.3243

353.4814, 0.3173,
0.3246

0.3005

0.0780, 0.4925,
0.1536

0.0000, 0.0000,
0.0000

57.9378, 0.3211,
0.3209

57.9378, 0.3211,
0.3209

48.4287, 0.3336,
0.3102

68.8650, 0.3108,
0.3309

40.2719, 0.3487,
0.2992

81.2578, 0.3024,
0.3403

33.4074, 0.3669,
0.2881

92.0029, 0.2954,
0.3439

27.7678, 0.3885,
0.2776

92.7763, 0.2887,
0.3308

■ 23.2795, 0.4134,
0.2686

■ 92.8951, 0.2878,
0.3289

■ 19.8610, 0.4414,
0.2623

■ 17.4199, 0.4713,
0.2600

■ 15.8478, 0.5014,
0.2627

■ 14.9888, 0.5298,
0.2705

Harmonies

Analogous

The Analogous color harmony consists of three colors that are next to each other on the color wheel.



57.9378, 0.3116, 0.3150



57.9378, 0.3211, 0.3209



57.9378, 0.3284, 0.3289

Triad

The Triadic color harmony groups three colors that are evenly spaced from another and form a triangle on the color wheel.



57.9378, 0.3211, 0.3209



57.9378, 0.3229, 0.3457



57.9378, 0.2943, 0.3205

Complementary

The Complementary color scheme is a pair of colors which are on the opposite of each other on the color wheel.



57.9378, 0.3211, 0.3209



63.8098, 0.3050, 0.3372

Split Complementary

Split-complementary colors differ from the complementary color scheme. The scheme consists of three colors, the original color and two neighbors of the complement color.



57.9378, 0.2972, 0.3288



57.9378, 0.3211, 0.3209



57.9378, 0.3136, 0.3435

Square

The Square scheme is like the rectangle color scheme, but the four colors are evenly spaced on the color wheel.



57.9378, 0.3211, 0.3209



57.9378, 0.3294, 0.3432



57.9378, 0.3043, 0.3373



57.9378, 0.2962, 0.3147

Rectangle

The Rectangle color scheme consists of four colors that form a rectangle on the color wheel.



57.9378, 0.3211, 0.3209



57.9378, 0.3310, 0.3344



57.9378, 0.3043, 0.3373



57.9378, 0.2948, 0.3231

Sweetspot

The Sweet Spot groups the original color and five complimentary colors.



57.9403, 0.3211, 0.3209



96.5974, 0.3147, 0.3270



57.3938, 0.3081, 0.3092



20.7114, 0.3146, 0.3271



0.0000, 0.0000, 0.0000



21.4041, 0.3127, 0.3290

Same Dimension

The Same Dimension uses a secret algorithm to generate beautiful new colors.



57.9403, 0.3211, 0.3209



83.8670, 0.3235, 0.3187



58.2575, 0.3263, 0.3307



12.5048, 0.3227, 0.3194



9.0877, 0.5316, 0.2702



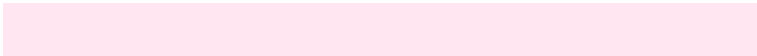
0.5644, 0.4867, 0.2455

Inverse Universe

The Inverse Universe completely reimagines the original color for something new.



57.9403, 0.3211, 0.3209



83.8670, 0.3235, 0.3187



63.4463, 0.3004, 0.3273



12.5048, 0.3227, 0.3194



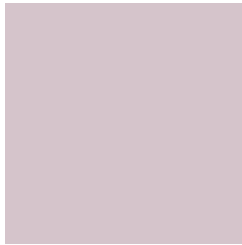
9.0877, 0.5316, 0.2702



0.5644, 0.4867, 0.2455

Previews

White Background



This preview shows how the Yxy color 57.9378, 0.3211, 0.3209 looks on a white background.

Color Contrast Check

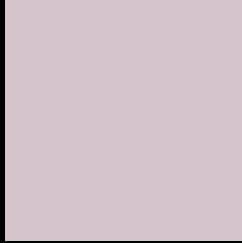
Large Text (above 18pt) WCAG AA × Fail

Any Text WCAG AA × Fail

Large Text (above 18pt) WCAG AAA × Fail

Any Text WCAG AAA × Fail

Black Background



This preview shows how the Yxy color 57.9378, 0.3211, 0.3209 looks on a black background.

Color Contrast Check

Large Text (above 18pt) WCAG AA ✓ Pass

Any Text WCAG AA ✓ Pass

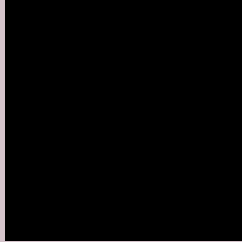
Large Text (above 18pt) WCAG AAA ✓ Pass

Any Text WCAG AAA ✓ Pass

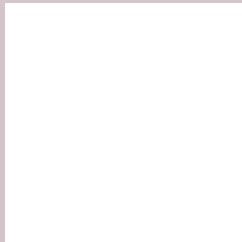
If you want to check with other color combinations, try the [Color Contrast Checker](#).

Yxy 57.9378, 0.3211, 0.3209

Background



This preview shows how black text looks on a background with the Yxy color 57.9378, 0.3211, 0.3209.



This preview shows how white text looks on a background with the Yxy color 57.9378, 0.3211, 0.3209.

Color Blindness Simulation

Color vision deficiency is a very complex topic, and I could not describe the different causes any better than Wikipedia does, so if you want to learn more, you should check out their [article about color blindness](#).

Dichromacy



Original Color

57.9378, 0.3211, 0.3209

Protanopia

57.9511, 0.3115, 0.3219

Deuteranopia

57.8008, 0.3253, 0.3188



Tritanopia

57.9795, 0.3167, 0.3119

Trichromacy



Original Color

57.9378, 0.3211, 0.3209

Protanomaly

58.0132, 0.3154, 0.3220

Deuteranomaly

57.9409, 0.3236, 0.3199

Tritanomaly

57.8313, 0.3189, 0.3152

Monochromacy



Original Color

57.9378, 0.3211, 0.3209

Achromatopsia

59.0619, 0.3127, 0.3290

Achromatomaly

58.6946, 0.3159, 0.3267

CSS Examples

Text

The CSS property to change the color of the text to Yxy 57.9378, 0.3211, 0.3209 is called "color". The color property can be set on classes, ids or directly on the HTML element.

This example shows how text in the color `rgb(213, 196, 203)` looks like.

```
.text, #text, p{  
    color:rgb(213, 196, 203)  
}
```

If you want to add a text shadow in that color use the text-shadow property, you can generate a text shadow directly with our [CSS Text Shadow Generator](#).

Here you see how black text with a 4 pixel rgb(213, 196, 203) colored shadow looks like.

```
.shadow{ text-shadow: 4px 4px 2px rgb(213, 196, 203) }
```

Border

The CSS property to change the border of an element to Yxy 57.9378, 0.3211, 0.3209 is called "border". The border property can be set on classes, ids or directly on the HTML element.

This example shows the color as border, it can be applied via the CSS property "border" or "border-color".

```
.border, #border, table{ border:4px solid rgb(213, 196, 203) }
```

If only the border color should be changed use the property `border-color`.

```
.border{ border-color:rgb(213, 196, 203) }
```

If you want to add a box shadow in that color use:

Here you see how a box with a 4 pixel `rgb(213, 196, 203)` colored shadow looks like.

```
.boxshadow{ -moz-box-shadow:4px 4px 4px 4px rgb(213, 196, 203); -webkit-box-shadow:4px 4px 4px 4px rgb(213, 196, 203); box-shadow:4px 4px 4px 4px rgb(213, 196, 203) }
```


Background

The CSS property to change the background color of an element to Yxy 57.9378, 0.3211, 0.3209 is called "background". The background property can be set on classes, ids or directly on the HTML element.

```
.background, #background, body{  
background: rgb(213, 196, 203) }
```

If only the background color should be changed can be used:

```
.background{ background-color: rgb(213,  
196, 203) }
```

This example shows the color as background, it is applied via the CSS property "background".

To optimize and compress your CSS code, you can use our [online CSS compressor and optimizer](#) based on csstidy. If you want to create a linear or radial gradient as background or border, check our [CSS Gradient Generator](#).

Hey! You found this booklet interesting? Support Converting Colors with the new Membership Option!

The pro membership hides all ads, plus gives you double the colors in the color bucket, and more awesome pro features!

[Learn more, Memberships starting at \\$2.50/m!](#)

**Follow me
on Twitter!**

@ConvertingColor