

Converting Colors

$Yxy(58.0729, 0.3486, 0.3484)$

Have a look what the booklet for
Yxy(58.0729, 0.3486, 0.3484)
contains.

Yxy(57.9325, 0.3490, 0.3487)	3
Conversions	4
Details	6
Harmonies	12
Previews	24
Color Blindness Simulation	27
CSS Examples	30

Color

Yxy(57.9325, 0.3490, 0.3487)

Conversions

Conversions Part 1

Format	Color
Hex	DFC3B2
RGB	223, 195, 178
RGB Percent	87%, 76%, 70%
CMY	0.1254, 0.2353, 0.3021
CMYK	0.00, 0.13, 0.20, 0.13
HSL	23°, 41%, 79%
HSV	23°, 20%, 87%
XYZ	57.9823, 57.9325, 50.2237
YIQ	201.4340, 22.1450, 0.6490

Conversions

Conversions Part 2

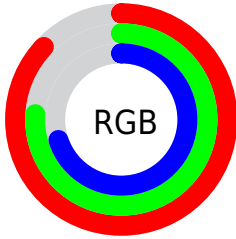
Format	Color
R _Y B	223, 205, 178
Decimal	14664626
CIE Lab	80.70, 7.24, 12.20
CIE LCh	81, 14.183, 59.307
Yxy	57.9325, 0.3490, 0.3487
Android (android.graphics.Color)	4292854706 (0xFFDFC3B2)
YUV	201.4340, -11.5530, 18.9134
Hunter-Lab	76.1134, 2.7809, 14.1567

Details

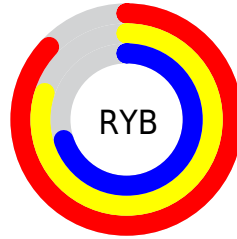
The Yxy color $57.9325, 0.3490, 0.3487$ is a light color, and the websafe version is hex `FFCCCC`. A complement of this color would be $58.9173, 0.2813, 0.3084$, and the grayscale version is $58.7556, 0.3127, 0.3290$.

A 20% lighter version of the original color is $96.8213, 0.3253, 0.3465$, and $28.7459, 0.3586, 0.3535$ is the 20% darker color. If you saturate the color by 10%, you get $51.1834, 0.3716, 0.3591$, and if you desaturate by 10%, it is $65.4094, 0.3296, 0.3387$.

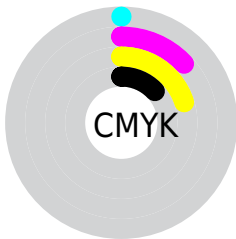
Distribution



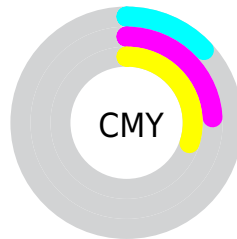
- Red (87%)
- Green (76%)
- Blue (70%)



- Red (87%)
- Yellow (80%)
- Blue (70%)



- Cyan (0%)
- Magenta (13%)
- Yellow (20%)
- Black (13%)





- Cyan (13%)
- Magenta (24%)
- Yellow (30%)

Brightness & Saturation Gradients

These gradients show how the Yxy color 57.9325, 0.3490, 0.3487 changes by changing the brightness by 10 percent. The first figure shows a shift by +10% for each color and the second figure -10%.

Similar to the brightness gradients but the following saturation gradients show a change of the Yxy color 57.9325, 0.3490, 0.3487 by changing the saturation by 10% instead.


 57.9325, 0.3490,
0.3487

 57.9325, 0.3490,
0.3487


416.9344, 0.3314,
0.3394

 41.7544, 0.3532,
0.3508


 101.8246, 0.3427,
0.3455

 28.9090, 0.3586,
0.3535


130.3073, 0.3403,
0.3442

 19.0120, 0.3655,
0.3569


163.6603, 0.3383,
0.3431

 11.6790, 0.3749,
0.3613

202.2681, 0.3365,
0.3422

 6.5255, 0.3882,
0.3674

246.5150, 0.3350,
0.3414

 3.1671, 0.4087,
0.3760

296.7854, 0.3337,

 1.2196, 0.4566,

0.3407

0.4000

353.4638, 0.3325,
0.3400

0.0776, 0.7634,
0.2366

0.0000, 0.0000,
0.0000

57.9325, 0.3490,
0.3487

57.9325, 0.3490,
0.3487

51.1834, 0.3716,
0.3591

65.4094, 0.3296,
0.3387

45.1317, 0.3975,
0.3694

73.6278, 0.3130,
0.3292

39.7559, 0.4268,
0.3790

82.6110, 0.2989,
0.3204

35.0308, 0.4588,
0.3869

91.5702, 0.2934,
0.3244

■ 30.9289, 0.4923,
0.3919

■ 94.4304, 0.2935,
0.3289

■ 27.4208, 0.5250,
0.3926

■ 24.4736, 0.5542,
0.3882

■ 22.0879, 0.5778,
0.3794

Harmonies

Analogous

The Analogous color harmony consists of three colors that are next to each other on the color wheel.



57.9325, 0.3463, 0.3338



57.9325, 0.3490, 0.3487



57.9325, 0.3416, 0.3590

Triad

The Triadic color harmony groups three colors that are evenly spaced from another and form a triangle on the color wheel.



57.9325, 0.3490, 0.3487



57.9325, 0.2912, 0.3399



57.9325, 0.2983, 0.2987

Complementary

The Complementary color scheme is a pair of colors which are on the opposite of each other on the color wheel.



57.9325, 0.3490, 0.3487



58.9173, 0.2813, 0.3084

Split Complementary

Split-complementary colors differ from the complementary color scheme. The scheme consists of three colors, the original color and two neighbors of the complement color.



57.9325, 0.2842, 0.2994



57.9325, 0.3490, 0.3487



57.9325, 0.2802, 0.3227

Square

The Square scheme is like the rectangle color scheme, but the four colors are evenly spaced on the color wheel.



57.9325, 0.3490, 0.3487



57.9325, 0.3080, 0.3543



57.9325, 0.2777, 0.3079



57.9325, 0.3166, 0.3055

Rectangle

The Rectangle color scheme consists of four colors that form a rectangle on the color wheel.



57.9325, 0.3490, 0.3487



57.9325, 0.3322, 0.3616



57.9325, 0.2777, 0.3079



57.9325, 0.2929, 0.2980

Sweetspot

The Sweet Spot groups the original color and five complimentary colors.



57.9351, 0.3490, 0.3487



93.1339, 0.3224, 0.3346



51.9955, 0.3284, 0.2967



19.7793, 0.3235, 0.3353



0.0000, 0.0000, 0.0000



21.4041, 0.3127, 0.3290

Same Dimension

The Same Dimension uses a secret algorithm to generate beautiful new colors.



57.9351, 0.3490, 0.3487



74.7469, 0.3576, 0.3528



68.5327, 0.3443, 0.3729



14.5460, 0.3283, 0.3379



13.1866, 0.5751, 0.3816



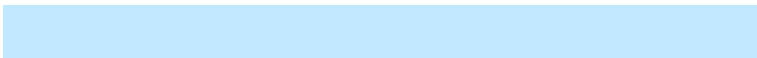
1.0827, 0.5462, 0.4045

Inverse Universe

The Inverse Universe completely reimagines the original color for something new.



58.9173, 0.2813, 0.3084



76.2907, 0.2751, 0.3039



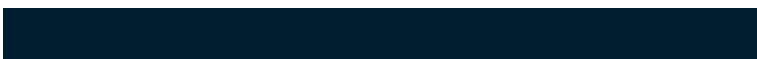
49.0561, 0.2796, 0.2810



14.6556, 0.2981, 0.3199



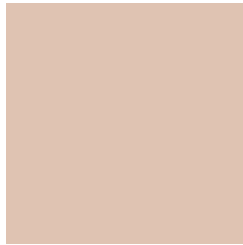
14.1530, 0.1891, 0.2005



1.1518, 0.1952, 0.2225

Previews

White Background



This preview shows how the Yxy color 57.9325, 0.3490, 0.3487 looks on a white background.

Color Contrast Check

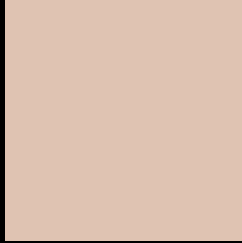
Large Text (above 18pt) WCAG AA × Fail

Any Text WCAG AA × Fail

Large Text (above 18pt) WCAG AAA × Fail

Any Text WCAG AAA × Fail

Black Background



This preview shows how the Yxy color 57.9325, 0.3490, 0.3487 looks on a black background.

Color Contrast Check

Large Text (above 18pt) WCAG AA ✓ Pass

Any Text WCAG AA ✓ Pass

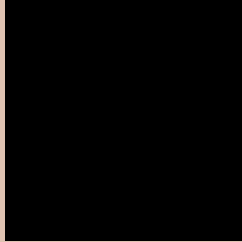
Large Text (above 18pt) WCAG AAA ✓ Pass

Any Text WCAG AAA ✓ Pass

If you want to check with other color combinations, try the [Color Contrast Checker](#).

Yxy 57.9325, 0.3490, 0.3487

Background



This preview shows how black text looks on a background with the Yxy color 57.9325, 0.3490, 0.3487.



This preview shows how white text looks on a background with the Yxy color 57.9325, 0.3490, 0.3487.

Color Blindness Simulation

Color vision deficiency is a very complex topic, and I could not describe the different causes any better than Wikipedia does, so if you want to learn more, you should check out their [article about color blindness](#).

Dichromacy



Original Color

57.9325, 0.3490, 0.3487

Protanopia

58.1592, 0.3348, 0.3528

Deuteranopia

57.8483, 0.3536, 0.3461



Tritanopia

57.8866, 0.3298, 0.3123

Trichromacy



Original Color

57.9325, 0.3490, 0.3487

Protanomaly

57.9390, 0.3400, 0.3514

Deuteranomaly

57.9667, 0.3517, 0.3474

Tritanomaly

57.6923, 0.3368, 0.3245

Monochromacy



Original Color

57.9325, 0.3490, 0.3487

Achromatopsia

58.4078, 0.3127, 0.3290

Achromatomaly

58.2524, 0.3251, 0.3361

CSS Examples

Text

The CSS property to change the color of the text to Yxy 57.9325, 0.3490, 0.3487 is called "color". The color property can be set on classes, ids or directly on the HTML element.

This example shows how text in the color `rgb(223, 195, 178)` looks like.

```
.text, #text, p{  
    color:rgb(223, 195, 178)  
}
```

If you want to add a text shadow in that color use the text-shadow property, you can generate a text shadow directly with our [CSS Text Shadow Generator](#).

Here you see how black text with a 4 pixel rgb(223, 195, 178) colored shadow looks like.

```
.shadow{ text-shadow: 4px 4px 2px rgb(223, 195, 178) }
```

Border

The CSS property to change the border of an element to Yxy 57.9325, 0.3490, 0.3487 is called "border". The border property can be set on classes, ids or directly on the HTML element.

This example shows the color as border, it can be applied via the CSS property "border" or "border-color".

```
.border, #border, table{ border:4px solid rgb(223, 195, 178) }
```

If only the border color should be changed use the property `border-color`.

```
.border{ border-color:rgb(223, 195, 178) }
```

If you want to add a box shadow in that color use:

Here you see how a box with a 4 pixel `rgb(223, 195, 178)` colored shadow looks like.

```
.boxshadow{ -moz-box-shadow:4px 4px 4px  
4px rgb(223, 195, 178); -webkit-box-  
shadow:4px 4px 4px 4px rgb(223, 195, 178);  
box-shadow:4px 4px 4px 4px rgb(223, 195,  
178) }
```


Background

The CSS property to change the background color of an element to Yxy 57.9325, 0.3490, 0.3487 is called "background". The background property can be set on classes, ids or directly on the HTML element.

```
.background, #background, body{  
background: rgb(223, 195, 178) }
```

If only the background color should be changed can be used:

```
.background{ background-color: rgb(223,  
195, 178) }
```

This example shows the color as background, it is applied via the CSS property "background".

To optimize and compress your CSS code, you can use our [online CSS compressor and optimizer](#) based on csstidy. If you want to create a linear or radial gradient as background or border, check our [CSS Gradient Generator](#).

Hey! You found this booklet interesting? Support Converting Colors with the new Membership Option!

The pro membership hides all ads, plus gives you double the colors in the color bucket, and more awesome pro features!

[Learn more, Memberships starting at \\$2.50/m!](#)

**Follow me
on Twitter!**

@ConvertingColor