

Converting Colors

$Yxy(58.2696, 0.3381, 0.3395)$

Have a look what the booklet for
Yxy(58.2696, 0.3381, 0.3395)
contains.

Yxy(58.1278, 0.3383, 0.3395)	3
Conversions	4
Details	6
Harmonies	12
Previews	24
Color Blindness Simulation	27
CSS Examples	30

Color

Yxy(58.1278, 0.3383, 0.3395)

Conversions

Conversions Part 1

Format	Color
Hex	DBC4BB
RGB	219, 196, 187
RGB Percent	86%, 77%, 73%
CMY	0.1411, 0.2314, 0.2668
CMYK	0.00, 0.11, 0.15, 0.14
HSL	17°, 31%, 80%
HSV	17°, 15%, 86%
XYZ	57.9223, 58.1278, 55.1658
YIQ	201.8510, 16.5970, 2.0770

Conversions

Conversions Part 2

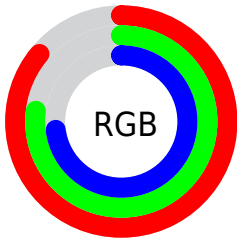
Format	Color
R _Y B	219, 200, 187
Decimal	14402747
CIE Lab	80.81, 6.63, 7.47
CIE LCh	81, 9.987, 48.439
Yxy	58.1278, 0.3383, 0.3395
Android (android.graphics.Color)	4292592827 (0xFFDBC4BB)
YUV	201.8510, -7.3215, 15.0397
Hunter-Lab	76.2416, 2.1874, 10.4689

Details

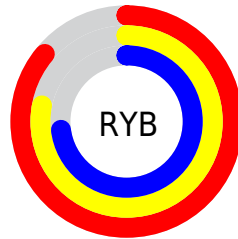
The Yxy color **58.1278, 0.3383, 0.3395** is a light color, and the websafe version is hex **CCCCCC**. A complement of this color would be **61.7586, 0.2902, 0.3183**, and the grayscale version is **59.0047, 0.3127, 0.3290**.

A 20% lighter version of the original color is **97.9816, 0.3198, 0.3386**, and **28.9597, 0.3452, 0.3413** is the 20% darker color. If you saturate the color by 10%, you get **50.5358, 0.3599, 0.3472**, and if you desaturate by 10%, it is **66.6118, 0.3201, 0.3322**.

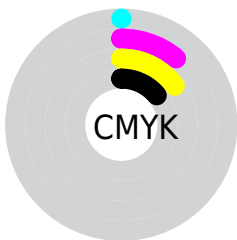
Distribution



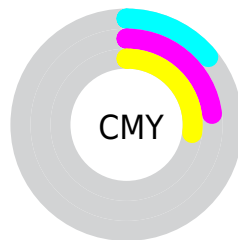
- Red (86%)
- Green (77%)
- Blue (73%)



- Red (86%)
- Yellow (78%)
- Blue (73%)



- Cyan (0%)
- Magenta (11%)
- Yellow (15%)
- Black (14%)



- Cyan (14%)
- Magenta (23%)
- Yellow (27%)

Brightness & Saturation Gradients


These gradients show how the Yxy color 58.1278, 0.3383, 0.3395 changes by changing the brightness by 10 percent. The first figure shows a shift by +10% for each color and the second figure -10%.


Similar to the brightness gradients but the following saturation gradients show a change of the Yxy color 58.1278, 0.3383, 0.3395 by changing the saturation by 10% instead.


 58.1278, 0.3383,
0.3395

 58.1278, 0.3383,
0.3395


417.6620, 0.3259,
0.3346

 41.9114, 0.3413,
0.3406

 102.1089, 0.3339,
0.3378

 29.0319, 0.3450,
0.3421


130.6425, 0.3322,
0.3371

 19.1050, 0.3499,
0.3439


164.0505, 0.3308,
0.3365

 11.7462, 0.3566,
0.3463

202.7174, 0.3295,
0.3360

 6.5711, 0.3661,
0.3496

247.0276, 0.3285,
0.3356

 3.1953, 0.3807,
0.3543

297.3655, 0.3275,

 1.2345, 0.4077,

0.3352

0.3629

354.1155, 0.3267,
0.3349

0.0896, 0.7337,
0.2663

0.0000, 0.0000,
0.0000

58.1278, 0.3383,
0.3395

58.1278, 0.3383,
0.3395

50.5358, 0.3599,
0.3472

66.6118, 0.3201,
0.3322

43.7987, 0.3855,
0.3550

76.0077, 0.3049,
0.3254

37.8881, 0.4154,
0.3626

86.3449, 0.2920,
0.3192

32.7713, 0.4493,
0.3691

93.8013, 0.2912,
0.3289

■ 28.4132, 0.4863,
0.3737

■ 24.7758, 0.5243,
0.3751

■ 21.8175, 0.5600,
0.3723

■ 19.4916, 0.5894,
0.3649

■ 18.4784, 0.6023,
0.3599

Harmonies

Analogous

The Analogous color harmony consists of three colors that are next to each other on the color wheel.



58.1278, 0.3339, 0.3284



58.1278, 0.3383, 0.3395



58.1278, 0.3357, 0.3481

Triad

The Triadic color harmony groups three colors that are evenly spaced from another and form a triangle on the color wheel.



58.1278, 0.3383, 0.3395



58.1278, 0.3016, 0.3407



58.1278, 0.2985, 0.3070

Complementary

The Complementary color scheme is a pair of colors which are on the opposite of each other on the color wheel.



58.1278, 0.3383, 0.3395



61.7586, 0.2902, 0.3183

Split Complementary

Split-complementary colors differ from the complementary color scheme. The scheme consists of three colors, the original color and two neighbors of the complement color.



58.1278, 0.2902, 0.3097



58.1278, 0.3383, 0.3395



58.1278, 0.2919, 0.3291

Square

The Square scheme is like the rectangle color scheme, but the four colors are evenly spaced on the color wheel.



58.1278, 0.3383, 0.3395



58.1278, 0.3143, 0.3491



58.1278, 0.2878, 0.3177



58.1278, 0.3107, 0.3100

Rectangle

The Rectangle color scheme consists of four colors that form a rectangle on the color wheel.



58.1278, 0.3383, 0.3395



58.1278, 0.3303, 0.3512



58.1278, 0.2878, 0.3177



58.1278, 0.2952, 0.3073

Sweetspot

The Sweet Spot groups the original color and five complimentary colors.



58.1304, 0.3383, 0.3395



94.7758, 0.3191, 0.3318



55.2677, 0.3210, 0.3024



20.0807, 0.3204, 0.3323



0.0000, 0.0000, 0.0000



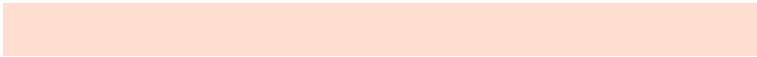
21.4041, 0.3127, 0.3290

Same Dimension

The Same Dimension uses a secret algorithm to generate beautiful new colors.



58.1304, 0.3383, 0.3395



78.1321, 0.3455, 0.3422



65.5022, 0.3357, 0.3569



13.6462, 0.3285, 0.3357



11.1168, 0.5997, 0.3620



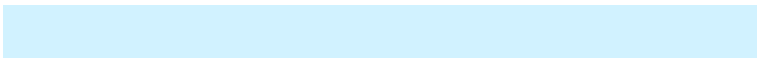
0.8648, 0.5673, 0.3877

Inverse Universe

The Inverse Universe completely reimagines the original color for something new.



61.7586, 0.2902, 0.3183



84.3300, 0.2848, 0.3154



54.4604, 0.2896, 0.2994



14.1768, 0.2982, 0.3223



17.5778, 0.1986, 0.2351



1.2820, 0.2034, 0.2522

Previews

White Background



This preview shows how the Yxy color 58.1278, 0.3383, 0.3395 looks on a white background.

Color Contrast Check

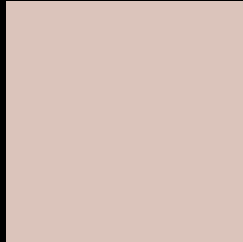
Large Text (above 18pt) WCAG AA × Fail

Any Text WCAG AA × Fail

Large Text (above 18pt) WCAG AAA × Fail

Any Text WCAG AAA × Fail

Black Background



This preview shows how the Yxy color 58.1278, 0.3383, 0.3395 looks on a black background.

Color Contrast Check

Large Text (above 18pt) WCAG AA ✓ Pass

Any Text WCAG AA ✓ Pass

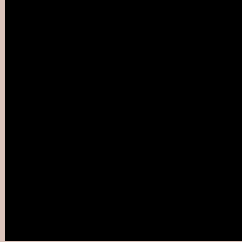
Large Text (above 18pt) WCAG AAA ✓ Pass

Any Text WCAG AAA ✓ Pass

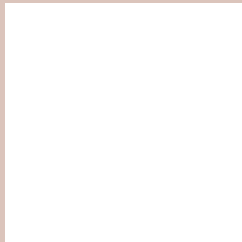
If you want to check with other color combinations, try the [Color Contrast Checker](#).

Yxy 58.1278, 0.3383, 0.3395

Background



This preview shows how black text looks on a background with the Yxy color 58.1278, 0.3383, 0.3395.



This preview shows how white text looks on a background with the Yxy color 58.1278, 0.3383, 0.3395.

Color Blindness Simulation

Color vision deficiency is a very complex topic, and I could not describe the different causes any better than Wikipedia does, so if you want to learn more, you should check out their [article about color blindness](#).

Dichromacy



Original Color

58.1278, 0.3383, 0.3395

Protanopia

58.2481, 0.3264, 0.3421

Deuteranopia

58.1790, 0.3436, 0.3371



Tritanopia

58.2236, 0.3248, 0.3122

Trichromacy



Original Color

58.1278, 0.3383, 0.3395

Protanomaly

58.3266, 0.3305, 0.3420

Deuteranomaly

58.3060, 0.3418, 0.3382

Tritanomaly

58.1259, 0.3300, 0.3222

Monochromacy



Original Color

58.1278, 0.3383, 0.3395

Achromatopsia

59.0619, 0.3127, 0.3290

Achromatomaly

58.7497, 0.3212, 0.3325

CSS Examples

Text

The CSS property to change the color of the text to Yxy 58.1278, 0.3383, 0.3395 is called "color". The color property can be set on classes, ids or directly on the HTML element.

This example shows how text in the color `rgb(219, 196, 187)` looks like.

```
.text, #text, p{  
    color:rgb(219, 196, 187)  
}
```

If you want to add a text shadow in that color use the text-shadow property, you can generate a text shadow directly with our [CSS Text Shadow Generator](#).

Here you see how black text with a 4 pixel rgb(219, 196, 187) colored shadow looks like.

```
.shadow{ text-shadow: 4px 4px 2px rgb(219, 196, 187) }
```

Border

The CSS property to change the border of an element to Yxy 58.1278, 0.3383, 0.3395 is called "border". The border property can be set on classes, ids or directly on the HTML element.

This example shows the color as border, it can be applied via the CSS property "border" or "border-color".

```
.border, #border, table{ border:4px solid rgb(219, 196, 187) }
```

If only the border color should be changed use the property `border-color`.

```
.border{ border-color:rgb(219, 196, 187) }
```

If you want to add a box shadow in that color use:

Here you see how a box with a 4 pixel `rgb(219, 196, 187)` colored shadow looks like.

```
.boxshadow{ -moz-box-shadow:4px 4px 4px  
4px rgb(219, 196, 187); -webkit-box-  
shadow:4px 4px 4px 4px rgb(219, 196, 187);  
box-shadow:4px 4px 4px 4px rgb(219, 196,  
187) }
```


Background

The CSS property to change the background color of an element to Yxy 58.1278, 0.3383, 0.3395 is called "background". The background property can be set on classes, ids or directly on the HTML element.

```
.background, #background, body{  
background: rgb(219, 196, 187) }
```

If only the background color should be changed can be used:

```
.background{ background-color: rgb(219,  
196, 187) }
```

This example shows the color as background, it is applied via the CSS property "background".

To optimize and compress your CSS code, you can use our [online CSS compressor and optimizer](#) based on csstidy. If you want to create a linear or radial gradient as background or border, check our [CSS Gradient Generator](#).

Hey! You found this booklet interesting? Support Converting Colors with the new Membership Option!

The pro membership hides all ads, plus gives you double the colors in the color bucket, and more awesome pro features!

[Learn more, Memberships starting at \\$2.50/m!](#)

**Follow me
on Twitter!**

@ConvertingColor