

Converting Colors

$Y_{xy}(58.2921, 0.3599, 0.3550)$

Have a look what the booklet for
Yxy(58.2921, 0.3599, 0.3550)
contains.

Yxy(58.1819, 0.3599, 0.3552)	3
Conversions	4
Details	6
Harmonies	12
Previews	24
Color Blindness Simulation	27
CSS Examples	30

Color

Yxy(58.1819, 0.3599, 0.3552)

Conversions

Conversions Part 1

Format	Color
Hex	E5C2AB
RGB	229, 194, 171
RGB Percent	90%, 76%, 67%
CMY	0.1021, 0.2392, 0.3293
CMYK	0.00, 0.15, 0.25, 0.10
HSL	24°, 53%, 78%
HSV	24°, 25%, 90%
XYZ	58.9518, 58.1819, 46.6667
YIQ	201.8430, 28.2430, 0.2670

Conversions

Conversions Part 2

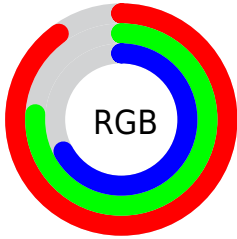
Format	Color
R _Y B	229, 209, 171
Decimal	15057579
CIE Lab	80.84, 8.99, 16.17
CIE LCh	81, 18.505, 60.925
Yxy	58.1819, 0.3599, 0.3552
Android (android.graphics.Color)	4293247659 (0xFFE5C2AB)
YUV	201.8430, -15.2056, 23.8167
Hunter-Lab	76.2771, 4.4713, 17.1200

Details

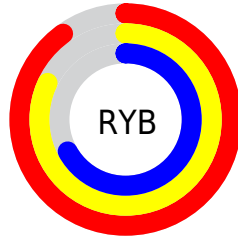
The Yxy color **58.1819, 0.3599, 0.3552** is a light color, and the websafe version is hex **FFCCCC**. A complement of this color would be **58.4570, 0.2732, 0.3012**, and the grayscale version is **59.0444, 0.3127, 0.3290**.

A 20% lighter version of the original color is **95.1222, 0.3303, 0.3525**, and **28.9723, 0.3725, 0.3604** is the 20% darker color. If you saturate the color by 10%, you get **51.5182, 0.3839, 0.3661**, and if you desaturate by 10%, it is **65.5740, 0.3391, 0.3444**.

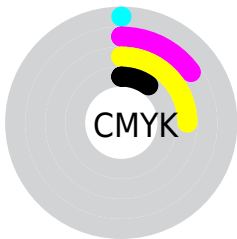
Distribution



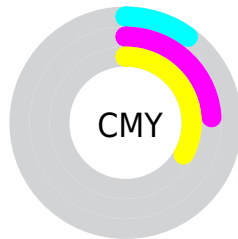
- Red (90%)
- Green (76%)
- Blue (67%)



- Red (90%)
- Yellow (82%)
- Blue (67%)



- Cyan (0%)
- Magenta (15%)
- Yellow (25%)
- Black (10%)





- Cyan (10%)
- Magenta (24%)
- Yellow (33%)

Brightness & Saturation Gradients


These gradients show how the Yxy color 58.1819, 0.3599, 0.3552 changes by changing the brightness by 10 percent. The first figure shows a shift by +10% for each color and the second figure -10%.


Similar to the brightness gradients but the following saturation gradients show a change of the Yxy color 58.1819, 0.3599, 0.3552 by changing the saturation by 10% instead.

 58.1819, 0.3599,
0.3552

 58.1819, 0.3599,
0.3552


417.8634, 0.3370,
0.3430

 41.9549, 0.3654,
0.3580

 102.1877, 0.3518,
0.3510

 29.0660, 0.3723,
0.3614


130.7353, 0.3487,
0.3493

 19.1307, 0.3812,
0.3658


164.1585, 0.3460,
0.3479

 11.7648, 0.3933,
0.3714

202.8418, 0.3437,
0.3466

 6.5837, 0.4103,
0.3788

247.1696, 0.3417,
0.3456

 3.2032, 0.4359,
0.3888

297.5261, 0.3400,

 1.2387, 0.5102,

0.3446

0.4289

354.2960, 0.3384,
0.3437

0.0930, 0.7681,
0.2319

0.0000, 0.0000,
0.0000

58.1819, 0.3599,
0.3552

58.1819, 0.3599,
0.3552

51.5182, 0.3839,
0.3661

65.5740, 0.3391,
0.3444

45.5516, 0.4112,
0.3767

73.7087, 0.3211,
0.3342

40.2600, 0.4414,
0.3860

82.6097, 0.3058,
0.3246

35.6172, 0.4736,
0.3930

91.7966, 0.2969,
0.3232

■ 31.5948, 0.5061,
0.3962

■ 95.3938, 0.2970,
0.3290

■ 28.1615, 0.5366,
0.3947

■ 25.2823, 0.5623,
0.3877

■ 24.1041, 0.5729,
0.3833

Harmonies

Analogous

The Analogous color harmony consists of three colors that are next to each other on the color wheel.



58.1819, 0.3572, 0.3360



58.1819, 0.3599, 0.3552



58.1819, 0.3495, 0.3685

Triad

The Triadic color harmony groups three colors that are evenly spaced from another and form a triangle on the color wheel.



58.1819, 0.3599, 0.3552



58.1819, 0.2837, 0.3420



58.1819, 0.2950, 0.2901

Complementary

The Complementary color scheme is a pair of colors which are on the opposite of each other on the color wheel.



58.1819, 0.3599, 0.3552



58.4570, 0.2732, 0.3012

Split Complementary

Split-complementary colors differ from the complementary color scheme. The scheme consists of three colors, the original color and two neighbors of the complement color.



58.1819, 0.2765, 0.2903



58.1819, 0.3599, 0.3552



58.1819, 0.2702, 0.3193

Square

The Square scheme is like the rectangle color scheme, but the four colors are evenly spaced on the color wheel.



58.1819, 0.3599, 0.3552



58.1819, 0.3052, 0.3615



58.1819, 0.2676, 0.3006



58.1819, 0.3190, 0.2994

Rectangle

The Rectangle color scheme consists of four colors that form a rectangle on the color wheel.



58.1819, 0.3599, 0.3552



58.1819, 0.3368, 0.3717



58.1819, 0.2676, 0.3006



58.1819, 0.2880, 0.2891

Sweetspot

The Sweet Spot groups the original color and five complimentary colors.



58.1846, 0.3599, 0.3552



91.1514, 0.3258, 0.3369



50.2853, 0.3341, 0.2891



19.1691, 0.3284, 0.3385



0.0000, 0.0000, 0.0000



21.4041, 0.3127, 0.3290

Same Dimension

The Same Dimension uses a secret algorithm to generate beautiful new colors.



58.1846, 0.3599, 0.3552



70.0172, 0.3712, 0.3605



71.9518, 0.3525, 0.3853



15.3012, 0.3283, 0.3384



14.0047, 0.5702, 0.3855



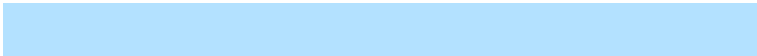
1.2122, 0.5434, 0.4067

Inverse Universe

The Inverse Universe completely reimagines the original color for something new.



58.4570, 0.2732, 0.3012



70.4107, 0.2655, 0.2951



46.0755, 0.2700, 0.2657



15.3267, 0.2981, 0.3195



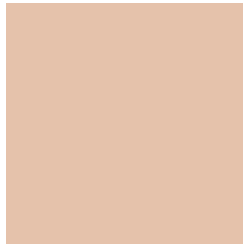
13.8975, 0.1872, 0.1939



1.2072, 0.1933, 0.2157

Previews

White Background



This preview shows how the Yxy color 58.1819, 0.3599, 0.3552 looks on a white background.

Color Contrast Check

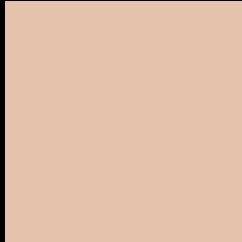
Large Text (above 18pt) WCAG AA × Fail

Any Text WCAG AA × Fail

Large Text (above 18pt) WCAG AAA × Fail

Any Text WCAG AAA × Fail

Black Background



This preview shows how the Yxy color 58.1819, 0.3599, 0.3552 looks on a black background.

Color Contrast Check

Large Text (above 18pt) WCAG AA ✓ Pass

Any Text WCAG AA ✓ Pass

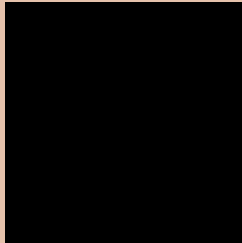
Large Text (above 18pt) WCAG AAA ✓ Pass

Any Text WCAG AAA ✓ Pass

If you want to check with other color combinations, try the [Color Contrast Checker](#).

Yxy 58.1819, 0.3599, 0.3552

Background



This preview shows how black text looks on a background with the Yxy color 58.1819, 0.3599, 0.3552.



This preview shows how white text looks on a background with the Yxy color 58.1819, 0.3599, 0.3552.

Color Blindness Simulation

Color vision deficiency is a very complex topic, and I could not describe the different causes any better than Wikipedia does, so if you want to learn more, you should check out their [article about color blindness](#).

Dichromacy



Original Color

58.1819, 0.3599, 0.3552

Protanopia

58.2134, 0.3410, 0.3599

Deuteranopia

58.0691, 0.3619, 0.3540



Tritanopia

58.0785, 0.3374, 0.3126

Trichromacy



Original Color

58.1819, 0.3599, 0.3552

Protanomaly

58.3107, 0.3480, 0.3582

Deuteranomaly

57.9032, 0.3611, 0.3540

Tritanomaly

58.2232, 0.3460, 0.3280

Monochromacy



Original Color

58.1819, 0.3599, 0.3552

Achromatopsia

59.0619, 0.3127, 0.3290

Achromatomaly

58.6055, 0.3290, 0.3384

CSS Examples

Text

The CSS property to change the color of the text to Yxy 58.1819, 0.3599, 0.3552 is called "color". The color property can be set on classes, ids or directly on the HTML element.

This example shows how text in the color `rgb(229, 194, 171)` looks like.

```
.text, #text, p{  
    color:rgb(229, 194, 171)  
}
```

If you want to add a text shadow in that color use the text-shadow property, you can generate a text shadow directly with our [CSS Text Shadow Generator](#).

Here you see how black text with a 4 pixel rgb(229, 194, 171) colored shadow looks like.

```
.shadow{ text-shadow: 4px 4px 2px rgb(229, 194, 171) }
```

Border

The CSS property to change the border of an element to Yxy 58.1819, 0.3599, 0.3552 is called "border". The border property can be set on classes, ids or directly on the HTML element.

This example shows the color as border, it can be applied via the CSS property "border" or "border-color".

```
.border, #border, table{ border:4px solid rgb(229, 194, 171) }
```

If only the border color should be changed use the property border-color.

```
.border{ border-color:rgb(229, 194, 171) }
```

If you want to add a box shadow in that color use:

Here you see how a box with a 4 pixel rgb(229, 194, 171) colored shadow looks like.

```
.boxshadow{ -moz-box-shadow:4px 4px 4px  
4px rgb(229, 194, 171); -webkit-box-  
shadow:4px 4px 4px 4px rgb(229, 194, 171);  
box-shadow:4px 4px 4px 4px rgb(229, 194,  
171) }
```


Background

The CSS property to change the background color of an element to Yxy 58.1819, 0.3599, 0.3552 is called "background". The background property can be set on classes, ids or directly on the HTML element.

```
.background, #background, body{  
background: rgb(229, 194, 171) }
```

If only the background color should be changed can be used:

```
.background{ background-color: rgb(229,  
194, 171) }
```

This example shows the color as background, it is applied via the CSS property "background".

To optimize and compress your CSS code, you can use our [online CSS compressor and optimizer](#) based on csstidy. If you want to create a linear or radial gradient as background or border, check our [CSS Gradient Generator](#).

Hey! You found this booklet interesting? Support Converting Colors with the new Membership Option!

The pro membership hides all ads, plus gives you double the colors in the color bucket, and more awesome pro features!

[Learn more, Memberships starting at \\$2.50/m!](#)

**Follow me
on Twitter!**

@ConvertingColor