

Converting Colors

Yxy(58.3605, 0.3250, 0.3311)

Have a look what the booklet for
Yxy(58.3605, 0.3250, 0.3311)
contains.

Yxy(58.3707, 0.3253, 0.3314)	3
Conversions	4
Details	6
Harmonies	12
Previews	24
Color Blindness Simulation	27
CSS Examples	30

Color

Yxy(58.3707, 0.3253, 0.3314)

Conversions

Conversions Part 1

Format	Color
Hex	D4C6C4
RGB	212, 198, 196
RGB Percent	83%, 78%, 77%
CMY	0.1688, 0.2234, 0.2314
CMYK	0.00, 0.07, 0.08, 0.17
HSL	8°, 16%, 80%
HSV	8°, 8%, 83%
XYZ	57.2963, 58.3707, 60.4667
YIQ	201.9580, 8.9860, 2.3460

Conversions

Conversions Part 2

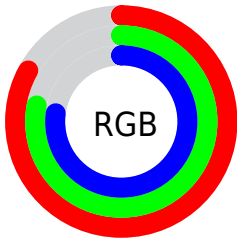
Format	Color
R_{YB}	212, 198, 196
Decimal	13944516
CIE Lab	80.94, 4.51, 2.75
CIE LCh	81, 5.286, 31.390
Yxy	58.3707, 0.3253, 0.3314
Android (android.graphics.Color)	4292134596 (0xFFD4C6C4)
YUV	201.9580, -2.9373, 8.8068
Hunter-Lab	76.4007, 0.1638, 6.5559

Details

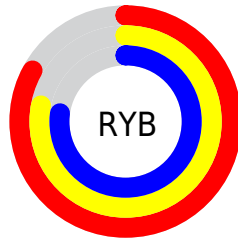
The Yxy color **58.3707, 0.3253, 0.3314** is a light color, and the websafe version is hex **CCCCCC**. A complement of this color would be **62.5357, 0.3012, 0.3266**, and the grayscale version is **59.0467, 0.3127, 0.3290**.

A 20% lighter version of the original color is **99.8718, 0.3139, 0.3309**, and **29.0676, 0.3286, 0.3321** is the 20% darker color. If you saturate the color by 10%, you get **49.5285, 0.3453, 0.3348**, and if you desaturate by 10%, it is **68.3870, 0.3090, 0.3282**.

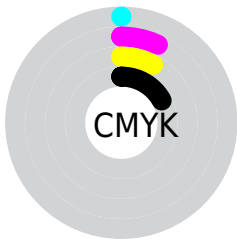
Distribution



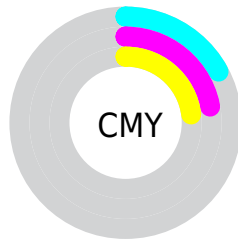
- Red (83%)
- Green (78%)
- Blue (77%)



- Red (83%)
- Yellow (78%)
- Blue (77%)



- Cyan (0%)
- Magenta (7%)
- Yellow (8%)
- Black (17%)



- Cyan (17%)
- Magenta (22%)
- Yellow (23%)

Brightness & Saturation Gradients

These gradients show how the Yxy color 58.3707, 0.3253, 0.3314 changes by changing the brightness by 10 percent. The first figure shows a shift by +10% for each color and the second figure -10%.

Similar to the brightness gradients but the following saturation gradients show a change of the Yxy color 58.3707, 0.3253, 0.3314 by changing the saturation by 10% instead.

■ 58.3707, 0.3253,
0.3314

■ 58.3707, 0.3253,
0.3314

418.5658, 0.3192,
0.3303

■ 42.1067, 0.3268,
0.3317

102.4625, 0.3231,
0.3310

■ 29.1849, 0.3286,
0.3320

131.0591, 0.3223,
0.3309

■ 19.2207, 0.3310,
0.3324

164.5354, 0.3216,
0.3307

■ 11.8299, 0.3342,
0.3329

203.2758, 0.3210,
0.3306

■ 6.6279, 0.3388,
0.3337

247.6646, 0.3205,
0.3305

■ 3.2305, 0.3460,
0.3348

298.0863, 0.3200,

■ 1.2532, 0.3585,

0.3304

354.9252, 0.3196,
0.3304

0.3365

0.1046, 0.6671,
0.3329

0.0000, 0.0000,
0.0000

58.3707, 0.3253,
0.3314

58.3707, 0.3253,
0.3314

49.5285, 0.3453,
0.3348

68.3870, 0.3090,
0.3282

41.8098, 0.3698,
0.3384

79.6101, 0.2956,
0.3254

35.1721, 0.3994,
0.3420

91.7829, 0.2871,
0.3274

29.5668, 0.4347,
0.3452

92.7287, 0.2871,
0.3289

■ 24.9419, 0.4753,
0.3477

■ 21.2406, 0.5192,
0.3488

■ 18.4006, 0.5626,
0.3478

■ 16.3514, 0.5996,
0.3444

■ 15.0098, 0.6250,
0.3391

Harmonies

Analogous

The Analogous color harmony consists of three colors that are next to each other on the color wheel.



58.3707, 0.3211, 0.3254



58.3707, 0.3253, 0.3314



58.3707, 0.3260, 0.3369

Triad

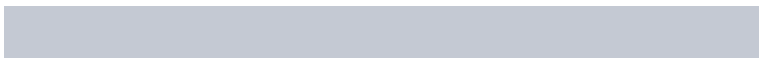
The Triadic color harmony groups three colors that are evenly spaced from another and form a triangle on the color wheel.



58.3707, 0.3253, 0.3314



58.3707, 0.3106, 0.3379



58.3707, 0.3023, 0.3178

Complementary

The Complementary color scheme is a pair of colors which are on the opposite of each other on the color wheel.



58.3707, 0.3253, 0.3314



62.5357, 0.3012, 0.3266

Split Complementary

Split-complementary colors differ from the complementary color scheme. The scheme consists of three colors, the original color and two neighbors of the complement color.



58.3707, 0.2996, 0.3210



58.3707, 0.3253, 0.3314



58.3707, 0.3043, 0.3326

Square

The Square scheme is like the rectangle color scheme, but the four colors are evenly spaced on the color wheel.



58.3707, 0.3253, 0.3314



58.3707, 0.3175, 0.3407



58.3707, 0.3003, 0.3264



58.3707, 0.3079, 0.3176

Rectangle

The Rectangle color scheme consists of four colors that form a rectangle on the color wheel.



58.3707, 0.3253, 0.3314



58.3707, 0.3245, 0.3395



58.3707, 0.3003, 0.3264



58.3707, 0.3011, 0.3185

Sweetspot

The Sweet Spot groups the original color and five complimentary colors.



58.3733, 0.3253, 0.3314



96.8690, 0.3159, 0.3296



58.1229, 0.3149, 0.3128



20.7668, 0.3157, 0.3296



0.0000, 0.0000, 0.0000



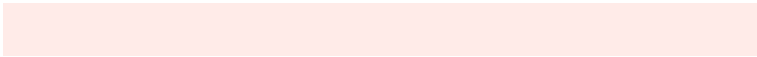
21.4041, 0.3127, 0.3290

Same Dimension

The Same Dimension uses a secret algorithm to generate beautiful new colors.



58.3733, 0.3253, 0.3314



86.4897, 0.3282, 0.3319



62.0345, 0.3245, 0.3404



12.6731, 0.3288, 0.3320



9.2055, 0.6283, 0.3393



0.6410, 0.6019, 0.3603

Inverse Universe

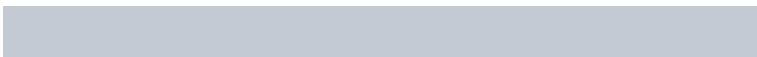
The Inverse Universe completely reimagines the original color for something new.



62.5357, 0.3012, 0.3266



94.0539, 0.2988, 0.3261



58.7772, 0.3012, 0.3173



13.8255, 0.2983, 0.3260



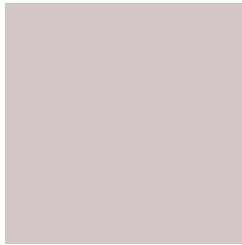
24.4600, 0.2135, 0.2885



1.5524, 0.2156, 0.2961

Previews

White Background



This preview shows how the Yxy color 58.3707, 0.3253, 0.3314 looks on a white background.

Color Contrast Check

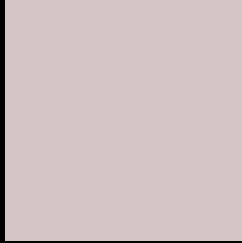
Large Text (above 18pt) WCAG AA × Fail

Any Text WCAG AA × Fail

Large Text (above 18pt) WCAG AAA × Fail

Any Text WCAG AAA × Fail

Black Background



This preview shows how the Yxy color 58.3707, 0.3253, 0.3314 looks on a black background.

Color Contrast Check

Large Text (above 18pt) WCAG AA ✓ Pass

Any Text WCAG AA ✓ Pass

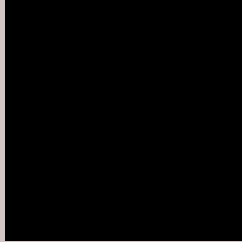
Large Text (above 18pt) WCAG AAA ✓ Pass

Any Text WCAG AAA ✓ Pass

If you want to check with other color combinations, try the [Color Contrast Checker](#).

Yxy 58.3707, 0.3253, 0.3314

Background



This preview shows how black text looks on a background with the Yxy color 58.3707, 0.3253, 0.3314.



This preview shows how white text looks on a background with the Yxy color 58.3707, 0.3253, 0.3314.

Color Blindness Simulation

Color vision deficiency is a very complex topic, and I could not describe the different causes any better than Wikipedia does, so if you want to learn more, you should check out their [article about color blindness](#).

Dichromacy



Original Color

58.3707, 0.3253, 0.3314

Protanopia

58.3189, 0.3188, 0.3326

Deuteranopia

58.1444, 0.3332, 0.3256



Tritanopia

58.4791, 0.3159, 0.3119

Trichromacy



Original Color

58.3707, 0.3253, 0.3314

Protanomaly

58.2880, 0.3213, 0.3314

Deuteranomaly

57.9669, 0.3298, 0.3268

Tritanomaly

58.5349, 0.3187, 0.3187

Monochromacy



Original Color

58.3707, 0.3253, 0.3314

Achromatopsia

59.0619, 0.3127, 0.3290

Achromatomaly

59.0652, 0.3173, 0.3302

CSS Examples

Text

The CSS property to change the color of the text to Yxy 58.3707, 0.3253, 0.3314 is called "color". The color property can be set on classes, ids or directly on the HTML element.

This example shows how text in the color `rgb(212, 198, 196)` looks like.

```
.text, #text, p{  
    color:rgb(212, 198, 196)  
}
```

If you want to add a text shadow in that color use the text-shadow property, you can generate a text shadow directly with our [CSS Text Shadow Generator](#).

Here you see how black text with a 4 pixel rgb(212, 198, 196) colored shadow looks like.

```
.shadow{ text-shadow: 4px 4px 2px rgb(212, 198, 196) }
```

Border

The CSS property to change the border of an element to Yxy 58.3707, 0.3253, 0.3314 is called "border". The border property can be set on classes, ids or directly on the HTML element.

This example shows the color as border, it can be applied via the CSS property "border" or "border-color".

```
.border, #border, table{ border:4px solid rgb(212, 198, 196) }
```

If only the border color should be changed use the property `border-color`.

```
.border{ border-color:rgb(212, 198, 196) }
```

If you want to add a box shadow in that color use:

Here you see how a box with a 4 pixel `rgb(212, 198, 196)` colored shadow looks like.

```
.boxshadow{ -moz-box-shadow:4px 4px 4px  
4px rgb(212, 198, 196); -webkit-box-  
shadow:4px 4px 4px 4px rgb(212, 198, 196);  
box-shadow:4px 4px 4px 4px rgb(212, 198,  
196) }
```


Background

The CSS property to change the background color of an element to Yxy 58.3707, 0.3253, 0.3314 is called "background". The background property can be set on classes, ids or directly on the HTML element.

```
.background, #background, body{  
background: rgb(212, 198, 196) }
```

If only the background color should be changed can be used:

```
.background{ background-color: rgb(212,  
198, 196) }
```

This example shows the color as background, it is applied via the CSS property "background".

To optimize and compress your CSS code, you can use our [online CSS compressor and optimizer](#) based on csstidy. If you want to create a linear or radial gradient as background or border, check our [CSS Gradient Generator](#).

Hey! You found this booklet interesting? Support Converting Colors with the new Membership Option!

The pro membership hides all ads, plus gives you double the colors in the color bucket, and more awesome pro features!

[Learn more, Memberships starting at \\$2.50/m!](#)

**Follow me
on Twitter!**

@ConvertingColor