

Converting Colors

Yxy(58.4711, 0.3190, 0.3148)

Have a look what the booklet for
Yxy(58.4711, 0.3190, 0.3148)
contains.

Yxy(58.4810, 0.3189, 0.3153)	3
<i>Conversions</i>	4
<i>Details</i>	6
<i>Harmonies</i>	12
<i>Previews</i>	24
<i>Color Blindness Simulation</i>	27
<i>CSS Examples</i>	30

Color

Yxy(58.4810, 0.3189, 0.3153)

Conversions

Conversions Part 1

Format	Color
Hex	D7C4D0
RGB	215, 196, 208
RGB Percent	84%, 77%, 82%
CMY	0.1569, 0.2313, 0.1843
CMYK	0.00, 0.09, 0.03, 0.16
HSL	322°, 19%, 81%
HSV	322°, 9%, 84%
XYZ	59.1487, 58.4810, 67.8476
YIQ	203.0490, 7.4720, 7.7600

Conversions

Conversions Part 2

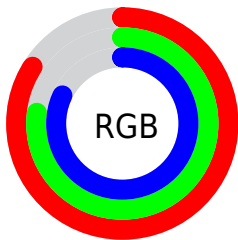
Format	Color
R _Y B	215, 196, 208
Decimal	14140624
CIE Lab	81.01, 8.75, -3.58
CIE LCh	81, 9.455, 337.780
Yxy	58.4810, 0.3189, 0.3153
Android (android.graphics.Color)	4292330704 (0xFFD7C4D0)
YUV	203.0490, 2.4408, 10.4810
Hunter-Lab	76.4729, 4.2351, 0.9282

Details

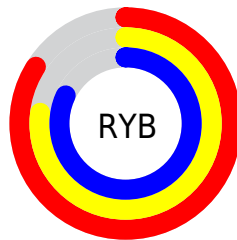
The Yxy color **58.4810, 0.3189, 0.3153** is a light color, and the websafe version is hex **CCCCCC**. A complement of this color would be **64.6472, 0.3070, 0.3431**, and the grayscale version is **59.7355, 0.3127, 0.3290**.

A 20% lighter version of the original color is **98.7306, 0.3128, 0.3271**, and **29.1527, 0.3200, 0.3109** is the 20% darker color. If you saturate the color by 10%, you get **49.0891, 0.3271, 0.2991**, and if you desaturate by 10%, it is **69.2872, 0.3120, 0.3308**.

Distribution



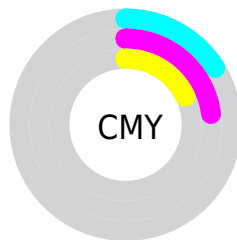
- Red (84%)
- Green (77%)
- Blue (82%)



- Red (84%)
- Yellow (77%)
- Blue (82%)



- Cyan (0%)
- Magenta (9%)
- Yellow (3%)
- Black (16%)



- Cyan (16%)
- Magenta (23%)
- Yellow (18%)

Brightness & Saturation Gradients

These gradients show how the Yxy color 58.4810, 0.3189, 0.3153 changes by changing the brightness by 10 percent. The first figure shows a shift by +10% for each color and the second figure -10%.

Similar to the brightness gradients but the following saturation gradients show a change of the Yxy color 58.4810, 0.3189, 0.3153 by changing the saturation by 10% instead.

■ 58.4810, 0.3189,
0.3153

■ 58.4810, 0.3189,
0.3153

■ 418.9759, 0.3160,
0.3218

■ 42.1955, 0.3196,
0.3138

■ 102.6230, 0.3179,
0.3176

■ 29.2544, 0.3205,
0.3118

■ 131.2482, 0.3175,
0.3185

■ 19.2733, 0.3216,
0.3093

■ 164.7555, 0.3171,
0.3192

■ 11.8680, 0.3231,
0.3060

■ 203.5291, 0.3168,
0.3199

■ 6.6538, 0.3252,
0.3013

■ 247.9536, 0.3166,
0.3205

■ 3.2466, 0.3283,
0.2943

■ 298.4133, 0.3163,

■ 1.2618, 0.3337,

0.3210

0.2824

355.2926, 0.3161,
0.3214

0.1113, 0.3984,
0.1388

0.0000, 0.0000,
0.0000

58.4810, 0.3189,
0.3153

58.4810, 0.3189,
0.3153

49.0891, 0.3271,
0.2991

69.2872, 0.3120,
0.3308

41.0449, 0.3369,
0.2825

81.5556, 0.3062,
0.3453

34.2874, 0.3482,
0.2660

91.7785, 0.3014,
0.3532

28.7484, 0.3611,
0.2503

92.2378, 0.2971,
0.3448

■ 24.3529, 0.3756,
0.2366

■ 92.7177, 0.2928,
0.3366

■ 21.0180, 0.3913,
0.2258

■ 93.1865, 0.2889,
0.3289

■ 18.6491, 0.4078,
0.2192

■ 17.1349, 0.4244,
0.2175

■ 16.3006, 0.4407,
0.2207

Harmonies

Analogous

The Analogous color harmony consists of three colors that are next to each other on the color wheel.



58.4810, 0.3065, 0.3094



58.4810, 0.3189, 0.3153



58.4810, 0.3298, 0.3247

Triad

The Triadic color harmony groups three colors that are evenly spaced from another and form a triangle on the color wheel.



58.4810, 0.3189, 0.3153



58.4810, 0.3296, 0.3499



58.4810, 0.2899, 0.3219

Complementary

The Complementary color scheme is a pair of colors which are on the opposite of each other on the color wheel.



58.4810, 0.3189, 0.3153



64.6472, 0.3070, 0.3431

Split Complementary

Split-complementary colors differ from the complementary color scheme. The scheme consists of three colors, the original color and two neighbors of the complement color.



58.4810, 0.2958, 0.3331



58.4810, 0.3189, 0.3153



58.4810, 0.3186, 0.3496

Square

The Square scheme is like the rectangle color scheme, but the four colors are evenly spaced on the color wheel.



58.4810, 0.3189, 0.3153



58.4810, 0.3360, 0.3446



58.4810, 0.3063, 0.3433



58.4810, 0.2899, 0.3130

Rectangle

The Rectangle color scheme consists of four colors that form a rectangle on the color wheel.



58.4810, 0.3189, 0.3153



58.4810, 0.3347, 0.3318



58.4810, 0.3063, 0.3433



58.4810, 0.2912, 0.3255

Sweetspot

The Sweet Spot groups the original color and five complimentary colors.



58.4835, 0.3189, 0.3153



95.0357, 0.3147, 0.3244



57.0810, 0.3044, 0.3068



20.0646, 0.3153, 0.3231



0.0000, 0.0000, 0.0000



21.4041, 0.3127, 0.3290

Same Dimension

The Same Dimension uses a secret algorithm to generate beautiful new colors.



58.4835, 0.3189, 0.3153



82.7435, 0.3207, 0.3117



58.0313, 0.3261, 0.3261



12.5515, 0.3193, 0.3144



9.7228, 0.4403, 0.2199



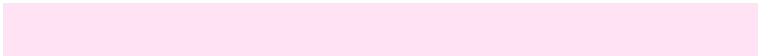
0.6021, 0.4143, 0.2056

Inverse Universe

The Inverse Universe completely reimagines the original color for something new.



58.4835, 0.3189, 0.3153



82.7435, 0.3207, 0.3117



65.1125, 0.3008, 0.3319



12.5515, 0.3193, 0.3144



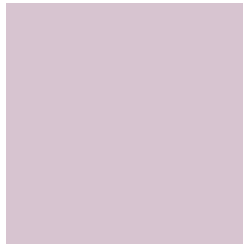
9.7228, 0.4403, 0.2199



0.6021, 0.4143, 0.2056

Previews

White Background



This preview shows how the Yxy color 58.4810, 0.3189, 0.3153 looks on a white background.

Color Contrast Check

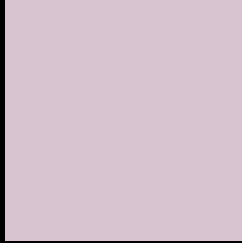
Large Text (above 18pt) WCAG AA × Fail

Any Text WCAG AA × Fail

Large Text (above 18pt) WCAG AAA × Fail

Any Text WCAG AAA × Fail

Black Background



This preview shows how the Yxy color 58.4810, 0.3189, 0.3153 looks on a black background.

Color Contrast Check

Large Text (above 18pt) WCAG AA ✓ Pass

Any Text WCAG AA ✓ Pass

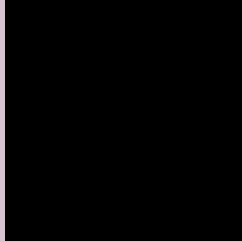
Large Text (above 18pt) WCAG AAA ✓ Pass

Any Text WCAG AAA ✓ Pass

If you want to check with other color combinations, try the [Color Contrast Checker](#).

Yxy 58.4810, 0.3189, 0.3153

Background



This preview shows how black text looks on a background with the Yxy color 58.4810, 0.3189, 0.3153.



This preview shows how white text looks on a background with the Yxy color 58.4810, 0.3189, 0.3153.

Color Blindness Simulation

Color vision deficiency is a very complex topic, and I could not describe the different causes any better than Wikipedia does, so if you want to learn more, you should check out their [article about color blindness](#).

Dichromacy



Original Color

58.4810, 0.3189, 0.3153

Protanopia

58.5183, 0.3071, 0.3173

Deuteranopia

58.3360, 0.3206, 0.3142



Tritanopia

58.6301, 0.3167, 0.3119

Trichromacy



Original Color

58.4810, 0.3189, 0.3153

Protanomaly

58.7157, 0.3117, 0.3174

Deuteranomaly

58.1832, 0.3198, 0.3142

Tritanomaly

58.5801, 0.3174, 0.3131

Monochromacy



Original Color

58.4810, 0.3189, 0.3153

Achromatopsia

59.7202, 0.3127, 0.3290

Achromatomaly

58.9817, 0.3145, 0.3232

CSS Examples

Text

The CSS property to change the color of the text to Yxy 58.4810, 0.3189, 0.3153 is called "color". The color property can be set on classes, ids or directly on the HTML element.

This example shows how text in the color `rgb(215, 196, 208)` looks like.

```
.text, #text, p{  
    color:rgb(215, 196, 208)  
}
```

If you want to add a text shadow in that color use the text-shadow property, you can generate a text shadow directly with our [CSS Text Shadow Generator](#).

Here you see how black text with a 4 pixel rgb(215, 196, 208) colored shadow looks like.

```
.shadow{ text-shadow: 4px 4px 2px rgb(215, 196, 208) }
```

Border

The CSS property to change the border of an element to Yxy 58.4810, 0.3189, 0.3153 is called "border". The border property can be set on classes, ids or directly on the HTML element.

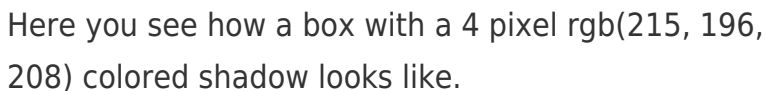
This example shows the color as border, it can be applied via the CSS property "border" or "border-color".

```
.border, #border, table{ border:4px solid rgb(215, 196, 208) }
```

If only the border color should be changed use the property border-color.

```
.border{ border-color:rgb(215, 196, 208) }
```

If you want to add a box shadow in that color use:



Here you see how a box with a 4 pixel rgb(215, 196, 208) colored shadow looks like.

```
.boxshadow{ -moz-box-shadow:4px 4px 4px  
4px rgb(215, 196, 208); -webkit-box-  
shadow:4px 4px 4px 4px rgb(215, 196, 208);  
box-shadow:4px 4px 4px 4px rgb(215, 196,  
208) }
```


Background

The CSS property to change the background color of an element to Yxy 58.4810, 0.3189, 0.3153 is called "background". The background property can be set on classes, ids or directly on the HTML element.

```
.background, #background, body{  
background: rgb(215, 196, 208) }
```

If only the background color should be changed can be used:

```
.background{ background-color: rgb(215,  
196, 208) }
```

This example shows the color as background, it is applied via the CSS property "background".

To optimize and compress your CSS code, you can use our [online CSS compressor and optimizer](#) based on csstidy. If you want to create a linear or radial gradient as background or border, check our [CSS Gradient Generator](#).

Hey! You found this booklet interesting? Support Converting Colors with the new Membership Option!

The pro membership hides all ads, plus gives you double the colors in the color bucket, and more awesome pro features!

[Learn more, Memberships starting at \\$2.50/m!](#)

**Follow me
on Twitter!**

@ConvertingColor