

# Converting Colors

Yxy(58.4711, 0.3245, 0.3177)

Have a look what the booklet for  
Yxy(58.4711, 0.3245, 0.3177)  
contains.

<b>Yxy(58.4981, 0.3245, 0.3177)</b> .....	3
<b>Conversions</b> .....	4
<b>Details</b> .....	6
<b>Harmonies</b> .....	12
<b>Previews</b> .....	24
<b>Color Blindness Simulation</b> .....	27
<b>CSS Examples</b> .....	30

# Color

**Yxy(58.4981, 0.3245, 0.3177)**

# Conversions

## Conversions Part 1

Format	Color
Hex	DBC3CD
RGB	219, 195, 205
RGB Percent	86%, 76%, 80%
CMY	0.1411, 0.2353, 0.1962
CMYK	0.00, 0.11, 0.06, 0.14
HSL	335°, 25%, 81%
HSV	335°, 11%, 86%
XYZ	59.7502, 58.4981, 65.8817
YIQ	203.3160, 11.0940, 8.1980

# Conversions

## Conversions Part 2

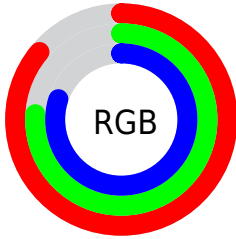
<b>Format</b>	<b>Color</b>
R <sub>Y</sub> B	219, 195, 205
Decimal	14402509
CIE Lab	81.01, 10.15, -1.89
CIE LCh	81, 10.329, 349.439
Yxy	58.4981, 0.3245, 0.3177
Android (android.graphics.Color)	4292592589 (0xFFDBC3CD)
YUV	203.3160, 0.8302, 13.7549
Hunter-Lab	76.4841, 5.5991, 2.4677

# Details

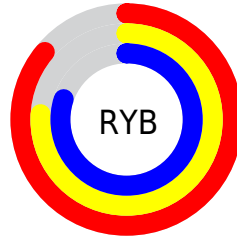
The Yxy color **58.4981, 0.3245, 0.3177** is a light color, and the websafe version is hex **CCCCCC**. A complement of this color would be **66.8833, 0.3023, 0.3406**, and the grayscale version is **59.9214, 0.3127, 0.3290**.

A 20% lighter version of the original color is **98.1008, 0.3128, 0.3261**, and **29.1766, 0.3274, 0.3141** is the 20% darker color. If you saturate the color by 10%, you get **48.8015, 0.3377, 0.3068**, and if you desaturate by 10%, it is **69.6900, 0.3137, 0.3280**.

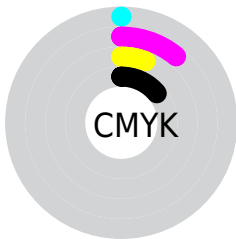
# Distribution



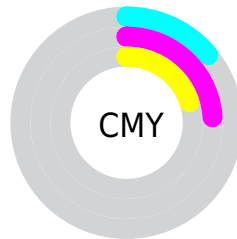
- Red (86%)
- Green (76%)
- Blue (80%)



- Red (86%)
- Yellow (76%)
- Blue (80%)



- Cyan (0%)
- Magenta (11%)
- Yellow (6%)
- Black (14%)




- Cyan (14%)
- Magenta (24%)
- Yellow (20%)

# Brightness & Saturation Gradients

These gradients show how the Yxy color 58.4981, 0.3245, 0.3177 changes by changing the brightness by 10 percent. The first figure shows a shift by +10% for each color and the second figure -10%.


Similar to the brightness gradients but the following saturation gradients show a change of the Yxy color 58.4981, 0.3245, 0.3177 by changing the saturation by 10% instead.




 58.4981, 0.3245,  
0.3177

 58.4981, 0.3245,  
0.3177


419.0394, 0.3189,  
0.3231

 42.2092, 0.3258,  
0.3164

 102.6479, 0.3225,  
0.3196

 29.2652, 0.3275,  
0.3148


131.2775, 0.3217,  
0.3203

 19.2815, 0.3297,  
0.3127


164.7896, 0.3211,  
0.3210

 11.8739, 0.3327,  
0.3100

203.5684, 0.3205,  
0.3215

 6.6578, 0.3368,  
0.3060

247.9984, 0.3200,  
0.3220

 3.2491, 0.3432,  
0.3001

298.4640, 0.3196,

 1.2631, 0.3542,

0.3224

0.2900

355.3495, 0.3192,  
0.3228

0.1124, 0.4914,  
0.1557

0.0000, 0.0000,  
0.0000

58.4981, 0.3245,  
0.3177

58.4981, 0.3245,  
0.3177

48.8015, 0.3377,  
0.3068

69.6900, 0.3137,  
0.3280

40.5290, 0.3536,  
0.2956

82.4293, 0.3048,  
0.3377

33.6148, 0.3727,  
0.2845

93.0792, 0.2974,  
0.3408

27.9850, 0.3952,  
0.2742

93.8037, 0.2912,  
0.3289

■ 23.5587, 0.4210,  
0.2658

■ 20.2455, 0.4496,  
0.2605

■ 17.9421, 0.4796,  
0.2596

■ 16.5254, 0.5092,  
0.2639

■ 15.8176, 0.5343,  
0.2717

# Harmonies

## Analogous

The Analogous color harmony consists of three colors that are next to each other on the color wheel.



58.4981, 0.3111, 0.3096



58.4981, 0.3245, 0.3177



58.4981, 0.3348, 0.3288

# Triad

The Triadic color harmony groups three colors that are evenly spaced from another and form a triangle on the color wheel.



58.4981, 0.3245, 0.3177



58.4981, 0.3269, 0.3525



58.4981, 0.2870, 0.3170

# Complementary

The Complementary color scheme is a pair of colors which are on the opposite of each other on the color wheel.



58.4981, 0.3245, 0.3177



66.8833, 0.3023, 0.3406

# Split Complementary

Split-complementary colors differ from the complementary color scheme. The scheme consists of three colors, the original color and two neighbors of the complement color.



58.4981, 0.2910, 0.3286



58.4981, 0.3245, 0.3177



58.4981, 0.3139, 0.3495

# Square

The Square scheme is like the rectangle color scheme, but the four colors are evenly spaced on the color wheel.



58.4981, 0.3245, 0.3177



58.4981, 0.3362, 0.3489



58.4981, 0.3008, 0.3407



58.4981, 0.2897, 0.3089



# Rectangle

The Rectangle color scheme consists of four colors that form a rectangle on the color wheel.



58.4981, 0.3245, 0.3177



58.4981, 0.3385, 0.3365



58.4981, 0.3008, 0.3407



58.4981, 0.2876, 0.3206

# Sweetspot

The Sweet Spot groups the original color and five complimentary colors.



58.5007, 0.3245, 0.3177



94.9310, 0.3157, 0.3260



57.7035, 0.3062, 0.3015



20.0364, 0.3165, 0.3251



0.0000, 0.0000, 0.0000



21.4041, 0.3127, 0.3290



# Same Dimension

The Same Dimension uses a secret algorithm to generate beautiful new colors.



58.5007, 0.3245, 0.3177



79.4565, 0.3271, 0.3154



58.9375, 0.3319, 0.3314



13.1407, 0.3227, 0.3193



9.3975, 0.5305, 0.2696



0.6257, 0.4883, 0.2464



# Inverse Universe

The Inverse Universe completely reimagines the original color for something new.



58.5007, 0.3245, 0.3177



79.4565, 0.3271, 0.3154



66.3546, 0.2959, 0.3266



13.1407, 0.3227, 0.3193



9.3975, 0.5305, 0.2696

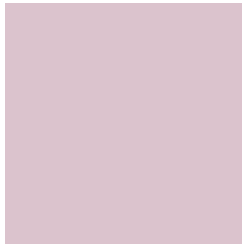


0.6257, 0.4883, 0.2464



# Previews

## White Background



This preview shows how the Yxy color 58.4981, 0.3245, 0.3177 looks on a white background.

## Color Contrast Check

Large Text (above 18pt) WCAG AA × Fail

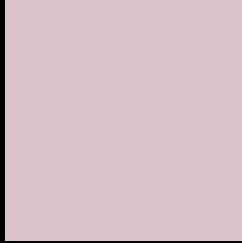
Any Text WCAG AA × Fail

Large Text (above 18pt) WCAG AAA × Fail

Any Text WCAG AAA × Fail



# Black Background



This preview shows how the Yxy color 58.4981, 0.3245, 0.3177 looks on a black background.

## Color Contrast Check

Large Text (above 18pt) WCAG AA ✓ Pass

Any Text WCAG AA ✓ Pass

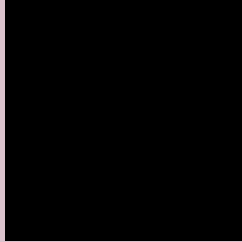
Large Text (above 18pt) WCAG AAA ✓ Pass

Any Text WCAG AAA ✓ Pass

If you want to check with other color combinations, try the [Color Contrast Checker](#).

**Yxy 58.4981, 0.3245, 0.3177**

## Background



This preview shows how black text looks on a background with the Yxy color 58.4981, 0.3245, 0.3177.



This preview shows how white text looks on a background with the Yxy color 58.4981, 0.3245, 0.3177.

# Color Blindness Simulation

Color vision deficiency is a very complex topic, and I could not describe the different causes any better than Wikipedia does, so if you want to learn more, you should check out their [article about color blindness](#).

## Dichromacy



### Original Color

58.4981, 0.3245, 0.3177

### Protanopia

58.5591, 0.3093, 0.3196

### Deuteranopia

58.4981, 0.3245, 0.3177



## Tritanopia

58.4524, 0.3216, 0.3110

# Trichromacy



## Original Color

58.4981, 0.3245, 0.3177

## Protanomaly

58.4485, 0.3148, 0.3186

## Deuteranomaly

58.4981, 0.3245, 0.3177

## Tritanomaly

58.3533, 0.3231, 0.3132

# Monochromacy



## Original Color

58.4981, 0.3245, 0.3177

## Achromatopsia

59.7202, 0.3127, 0.3290

## Achromatomaly

59.2235, 0.3168, 0.3244

# CSS Examples

## Text

The CSS property to change the color of the text to Yxy 58.4981, 0.3245, 0.3177 is called "color". The color property can be set on classes, ids or directly on the HTML element.

This example shows how text in the color `rgb(219, 195, 205)` looks like.

```
.text, #text, p{  
    color:rgb(219, 195, 205)  
}
```

If you want to add a text shadow in that color use the text-shadow property, you can generate a text shadow directly with our [CSS Text Shadow Generator](#).

Here you see how black text with a 4 pixel rgb(219, 195, 205) colored shadow looks like.

```
.shadow{ text-shadow: 4px 4px 2px rgb(219, 195, 205) }
```

## Border

The CSS property to change the border of an element to Yxy 58.4981, 0.3245, 0.3177 is called "border". The border property can be set on classes, ids or directly on the HTML element.

This example shows the color as border, it can be applied via the CSS property "border" or "border-color".

```
.border, #border, table{ border:4px solid rgb(219, 195, 205) }
```

If only the border color should be changed use the property `border-color`.

```
.border{ border-color:rgb(219, 195, 205) }
```

If you want to add a box shadow in that color use:

Here you see how a box with a 4 pixel `rgb(219, 195, 205)` colored shadow looks like.

```
.boxshadow{ -moz-box-shadow:4px 4px 4px  
4px rgb(219, 195, 205); -webkit-box-  
shadow:4px 4px 4px 4px rgb(219, 195, 205);  
box-shadow:4px 4px 4px 4px rgb(219, 195,  
205) }
```



# Background

The CSS property to change the background color of an element to Yxy 58.4981, 0.3245, 0.3177 is called "background". The background property can be set on classes, ids or directly on the HTML element.

```
.background, #background, body{  
background: rgb(219, 195, 205) }
```

If only the background color should be changed can be used:

```
.background{ background-color: rgb(219,  
195, 205) }
```

This example shows the color as background, it is applied via the CSS property "background".

To optimize and compress your CSS code, you can use our [online CSS compressor and optimizer](#) based on csstidy. If you want to create a linear or radial gradient as background or border, check our [CSS Gradient Generator](#).

Hey! You found this booklet interesting? Support Converting Colors with the new Membership Option!

The pro membership hides all ads, plus gives you double the colors in the color bucket, and more awesome pro features!

**[Learn more, Memberships starting at \\$2.50/m!](#)**

**Follow me  
on Twitter!**

@ConvertingColor