

Converting Colors

Yxy(58.4711, 0.3405, 0.3298)

Have a look what the booklet for
Yxy(58.4711, 0.3405, 0.3298)
contains.

Yxy(58.3211, 0.3407, 0.3291)	3
<i>Conversions</i>	4
<i>Details</i>	6
<i>Harmonies</i>	12
<i>Previews</i>	24
<i>Color Blindness Simulation</i>	27
<i>CSS Examples</i>	30

Color

Yxy(58.3211, 0.3407, 0.3291)

Conversions

Conversions Part 1

Format	Color
Hex	E3C1C1
RGB	227, 193, 193
RGB Percent	89%, 76%, 76%
CMY	0.1097, 0.2431, 0.2432
CMYK	0.00, 0.15, 0.15, 0.11
HSL	0°, 38%, 82%
HSV	0°, 15%, 89%
XYZ	60.3768, 58.3211, 58.5160
YIQ	203.1660, 20.2640, 7.2080

Conversions

Conversions Part 2

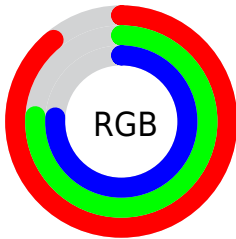
Format	Color
R_{YB}	227, 193, 193
Decimal	14926273
CIE _{Lab}	80.92, 12.07, 4.49
CIE _{LCh}	81, 12.878, 20.420
Yxy	58.3211, 0.3407, 0.3291
Android (android.graphics.Color)	4293116353 (0xFFE3C1C1)
YUV	203.1660, -5.0118, 20.9024
Hunter-Lab	76.3683, 7.4778, 8.0277

Details

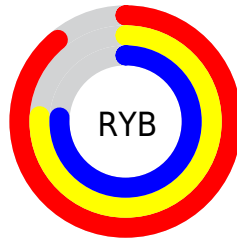
The Yxy color **58.3211, 0.3407, 0.3291** is a light color, and the websafe version is hex **FFCCCC**. A complement of this color would be **71.8210, 0.2900, 0.3289**, and the grayscale version is **59.8551, 0.3127, 0.3290**.

A 20% lighter version of the original color is **95.8509, 0.3165, 0.3290**, and **29.0166, 0.3473, 0.3276** is the 20% darker color. If you saturate the color by 10%, you get **48.1130, 0.3654, 0.3292**, and if you desaturate by 10%, it is **70.2289, 0.3210, 0.3290**.

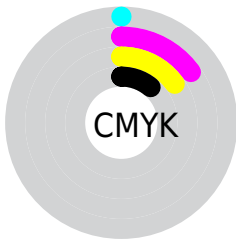
Distribution



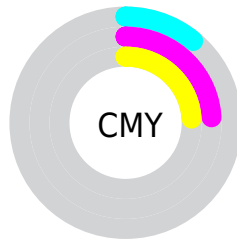
- Red (89%)
- Green (76%)
- Blue (76%)



- Red (89%)
- Yellow (76%)
- Blue (76%)



- Cyan (0%)
- Magenta (15%)
- Yellow (15%)
- Black (11%)





- Cyan (11%)
- Magenta (24%)
- Yellow (24%)

Brightness & Saturation Gradients


These gradients show how the Yxy color 58.3211, 0.3407, 0.3291 changes by changing the brightness by 10 percent. The first figure shows a shift by +10% for each color and the second figure -10%.

Similar to the brightness gradients but the following saturation gradients show a change of the Yxy color 58.3211, 0.3407, 0.3291 by changing the saturation by 10% instead.


 58.3211, 0.3407,
0.3291

 58.3211, 0.3407,
0.3291


418.3814, 0.3272,
0.3292

 42.0668, 0.3440,
0.3290


 102.3903, 0.3359,
0.3292

 29.1536, 0.3481,
0.3290


130.9741, 0.3340,
0.3292

 19.1971, 0.3534,
0.3288


164.4364, 0.3325,
0.3292

 11.8128, 0.3607,
0.3285

203.1618, 0.3311,
0.3292

 6.6163, 0.3710,
0.3281

247.5346, 0.3299,
0.3292

 3.2233, 0.3871,
0.3270

297.9392, 0.3289,

 1.2494, 0.4151,

0.3292

354.7600, 0.3280,
0.3292

0.3245

0.1015, 0.7939,
0.2061

0.0000, 0.0000,
0.0000

58.3211, 0.3407,
0.3291

58.3211, 0.3407,
0.3291

48.1130, 0.3654,
0.3292

70.2289, 0.3210,
0.3290

39.5199, 0.3960,
0.3293

83.9006, 0.3053,
0.3290

32.4613, 0.4334,
0.3294

95.0740, 0.2958,
0.3290

26.8470, 0.4771,
0.3296

■ 22.5772, 0.5250,
0.3297

■ 19.5397, 0.5718,
0.3298

■ 17.6038, 0.6101,
0.3299

■ 16.6096, 0.6332,
0.3300

■ 16.3366, 0.6400,
0.3300

Harmonies

Analogous

The Analogous color harmony consists of three colors that are next to each other on the color wheel.



58.3211, 0.3279, 0.3154



58.3211, 0.3407, 0.3291



58.3211, 0.3458, 0.3432

Triad

The Triadic color harmony groups three colors that are evenly spaced from another and form a triangle on the color wheel.



58.3211, 0.3407, 0.3291



58.3211, 0.3135, 0.3545



58.3211, 0.2843, 0.3037

Complementary

The Complementary color scheme is a pair of colors which are on the opposite of each other on the color wheel.



58.3211, 0.3407, 0.3291



71.8210, 0.2900, 0.3289

Split Complementary

Split-complementary colors differ from the complementary color scheme. The scheme consists of three colors, the original color and two neighbors of the complement color.



58.3211, 0.2807, 0.3135



58.3211, 0.3407, 0.3291



58.3211, 0.2973, 0.3432

Square

The Square scheme is like the rectangle color scheme, but the four colors are evenly spaced on the color wheel.



58.3211, 0.3407, 0.3291



58.3211, 0.3298, 0.3585



58.3211, 0.2854, 0.3279



58.3211, 0.2953, 0.3009

Rectangle

The Rectangle color scheme consists of four colors that form a rectangle on the color wheel.



58.3211, 0.3407, 0.3291



58.3211, 0.3441, 0.3510



58.3211, 0.2854, 0.3279



58.3211, 0.2822, 0.3063

Sweetspot

The Sweet Spot groups the original color and five complimentary colors.



58.3237, 0.3407, 0.3291



93.0275, 0.3193, 0.3290



60.0134, 0.3145, 0.2920



19.6400, 0.3206, 0.3290



0.0000, 0.0000, 0.0000



21.4041, 0.3127, 0.3290

Same Dimension

The Same Dimension uses a secret algorithm to generate beautiful new colors.



58.3237, 0.3407, 0.3291



71.5304, 0.3478, 0.3291



66.2771, 0.3379, 0.3480



14.3692, 0.3293, 0.3291



9.5263, 0.6400, 0.3300



0.7044, 0.6399, 0.3301

Inverse Universe

The Inverse Universe completely reimagines the original color for something new.



71.8210, 0.2900, 0.3289



92.2944, 0.2855, 0.3289



62.9759, 0.2893, 0.3093



16.3351, 0.2982, 0.3289



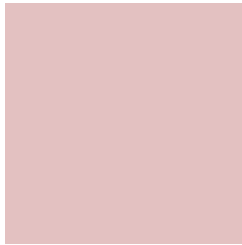
35.2369, 0.2246, 0.3286



2.6043, 0.2246, 0.3286

Previews

White Background



This preview shows how the Yxy color 58.3211, 0.3407, 0.3291 looks on a white background.

Color Contrast Check

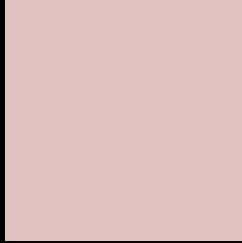
Large Text (above 18pt) WCAG AA × Fail

Any Text WCAG AA × Fail

Large Text (above 18pt) WCAG AAA × Fail

Any Text WCAG AAA × Fail

Black Background



This preview shows how the Yxy color 58.3211, 0.3407, 0.3291 looks on a black background.

Color Contrast Check

Large Text (above 18pt) WCAG AA ✓ Pass

Any Text WCAG AA ✓ Pass

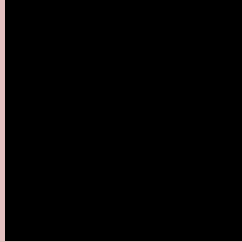
Large Text (above 18pt) WCAG AAA ✓ Pass

Any Text WCAG AAA ✓ Pass

If you want to check with other color combinations, try the [Color Contrast Checker](#).

Yxy 58.3211, 0.3407, 0.3291

Background



This preview shows how black text looks on a background with the Yxy color 58.3211, 0.3407, 0.3291.

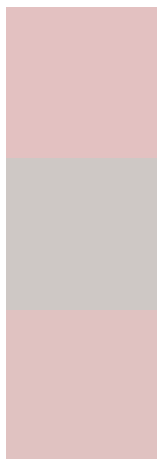


This preview shows how white text looks on a background with the Yxy color 58.3211, 0.3407, 0.3291.

Color Blindness Simulation

Color vision deficiency is a very complex topic, and I could not describe the different causes any better than Wikipedia does, so if you want to learn more, you should check out their [article about color blindness](#).

Dichromacy



Original Color

58.3211, 0.3407, 0.3291

Protanopia

58.4616, 0.3196, 0.3326

Deuteranopia

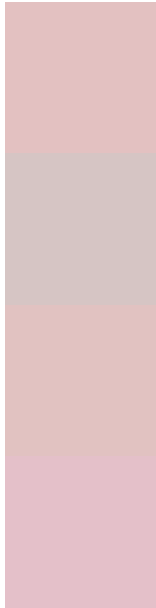
58.2811, 0.3380, 0.3302



Tritanopia

58.3758, 0.3323, 0.3124

Trichromacy



Original Color

58.3211, 0.3407, 0.3291

Protanomaly

58.2142, 0.3271, 0.3302

Deuteranomaly

58.4414, 0.3388, 0.3302

Tritanomaly

58.4103, 0.3353, 0.3190

Monochromacy



Original Color

58.3211, 0.3407, 0.3291

Achromatopsia

59.7202, 0.3127, 0.3290

Achromatomaly

58.9674, 0.3230, 0.3290

CSS Examples

Text

The CSS property to change the color of the text to Yxy 58.3211, 0.3407, 0.3291 is called "color". The color property can be set on classes, ids or directly on the HTML element.

This example shows how text in the color `rgb(227, 193, 193)` looks like.

```
.text, #text, p{  
    color:rgb(227, 193, 193)  
}
```

If you want to add a text shadow in that color use the text-shadow property, you can generate a text shadow directly with our [CSS Text Shadow Generator](#).

Here you see how black text with a 4 pixel rgb(227, 193, 193) colored shadow looks like.

```
.shadow{ text-shadow: 4px 4px 2px rgb(227, 193, 193) }
```

Border

The CSS property to change the border of an element to Yxy 58.3211, 0.3407, 0.3291 is called "border". The border property can be set on classes, ids or directly on the HTML element.

This example shows the color as border, it can be applied via the CSS property "border" or "border-color".

```
.border, #border, table{ border:4px solid rgb(227, 193, 193) }
```

If only the border color should be changed use the property border-color.

```
.border{ border-color:rgb(227, 193, 193) }
```

If you want to add a box shadow in that color use:

Here you see how a box with a 4 pixel rgb(227, 193, 193) colored shadow looks like.

```
.boxshadow{ -moz-box-shadow:4px 4px 4px  
4px rgb(227, 193, 193); -webkit-box-  
shadow:4px 4px 4px 4px rgb(227, 193, 193);  
box-shadow:4px 4px 4px 4px rgb(227, 193,  
193) }
```


Background

The CSS property to change the background color of an element to Yxy 58.3211, 0.3407, 0.3291 is called "background". The background property can be set on classes, ids or directly on the HTML element.

```
.background, #background, body{  
background: rgb(227, 193, 193) }
```

If only the background color should be changed can be used:

```
.background{ background-color: rgb(227,  
193, 193) }
```

This example shows the color as background, it is applied via the CSS property "background".

To optimize and compress your CSS code, you can use our [online CSS compressor and optimizer](#) based on csstidy. If you want to create a linear or radial gradient as background or border, check our [CSS Gradient Generator](#).

Hey! You found this booklet interesting? Support Converting Colors with the new Membership Option!

The pro membership hides all ads, plus gives you double the colors in the color bucket, and more awesome pro features!

[Learn more, Memberships starting at \\$2.50/m!](#)

**Follow me
on Twitter!**

@ConvertingColor