

Converting Colors

Yxy(58.4864, 0.3430, 0.3349)

Have a look what the booklet for
Yxy(58.4864, 0.3430, 0.3349)
contains.

Yxy(58.4264, 0.3429, 0.3348)	3
Conversions	4
Details	6
Harmonies	12
Previews	24
Color Blindness Simulation	27
CSS Examples	30

Color

Yxy(58.4264, 0.3429, 0.3348)

Conversions

Conversions Part 1

Format	Color
Hex	E2C2BD
RGB	226, 194, 189
RGB Percent	89%, 76%, 74%
CMY	0.1137, 0.2392, 0.2590
CMYK	0.00, 0.14, 0.16, 0.11
HSL	8°, 39%, 81%
HSV	8°, 16%, 89%
XYZ	59.8399, 58.4264, 56.2450
YIQ	202.9980, 20.6770, 5.2290

Conversions

Conversions Part 2

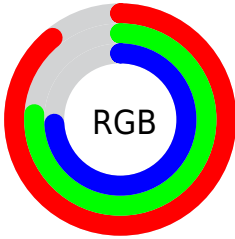
Format	Color
R _Y B	226, 195, 189
Decimal	14860989
CIE Lab	80.98, 10.54, 6.72
CIE LCh	81, 12.502, 32.540
Yxy	58.4264, 0.3429, 0.3348
Android (android.graphics.Color)	4293051069 (0xFFE2C2BD)
YUV	202.9980, -6.9010, 20.1728
Hunter-Lab	76.4372, 5.9763, 9.8785

Details

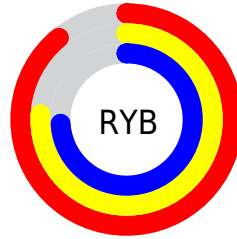
The Yxy color **58.4264, 0.3429, 0.3348** is a light color, and the websafe version is hex **FFCCCC**. A complement of this color would be **68.0007, 0.2877, 0.3231**, and the grayscale version is **59.7547, 0.3127, 0.3290**.

A 20% lighter version of the original color is **96.8469, 0.3188, 0.3348**, and **29.0798, 0.3503, 0.3351** is the 20% darker color. If you saturate the color by 10%, you get **49.3954, 0.3668, 0.3386**, and if you desaturate by 10%, it is **68.7573, 0.3233, 0.3312**.

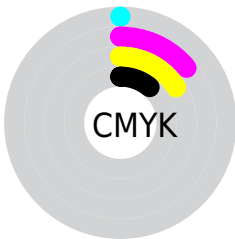
Distribution



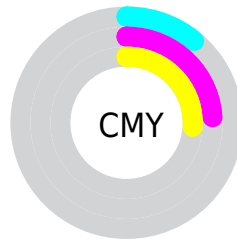
- Red (89%)
- Green (76%)
- Blue (74%)



- Red (89%)
- Yellow (76%)
- Blue (74%)



- Cyan (0%)
- Magenta (14%)
- Yellow (16%)
- Black (11%)





- Cyan (11%)
- Magenta (24%)
- Yellow (26%)

Brightness & Saturation Gradients


These gradients show how the Yxy color 58.4264, 0.3429, 0.3348 changes by changing the brightness by 10 percent. The first figure shows a shift by +10% for each color and the second figure -10%.


Similar to the brightness gradients but the following saturation gradients show a change of the Yxy color 58.4264, 0.3429, 0.3348 by changing the saturation by 10% instead.

 58.4264, 0.3429,
0.3348

 58.4264, 0.3429,
0.3348

418.7729, 0.3283,
0.3322

 42.1515, 0.3464,
0.3354

 102.5435, 0.3377,
0.3339

 29.2200, 0.3508,
0.3361


131.1546, 0.3357,
0.3336

 19.2473, 0.3566,
0.3369


164.6465, 0.3340,
0.3333

 11.8491, 0.3644,
0.3380

203.4037, 0.3326,
0.3330

 6.6410, 0.3756,
0.3394

247.8106, 0.3313,
0.3328

 3.2386, 0.3929,
0.3412

298.2514, 0.3302,

 1.2575, 0.4236,

0.3325

0.3435

355.1108, 0.3292,
0.3324

0.1080, 0.7692,
0.2308

0.0000, 0.0000,
0.0000

58.4264, 0.3429,
0.3348

58.4264, 0.3429,
0.3348

49.3954, 0.3668,
0.3386

68.7573, 0.3233,
0.3312

41.6053, 0.3959,
0.3425

80.4287, 0.3073,
0.3278

35.0040, 0.4305,
0.3460

93.3747, 0.2952,
0.3265

29.5328, 0.4705,
0.3488

94.9105, 0.2952,
0.3289

■ 25.1279, 0.5141,
0.3502

■ 21.7192, 0.5576,
0.3494

■ 19.2278, 0.5955,
0.3460

■ 17.5627, 0.6221,
0.3404

■ 17.1385, 0.6292,
0.3386

Harmonies

Analogous

The Analogous color harmony consists of three colors that are next to each other on the color wheel.



58.4264, 0.3332, 0.3209



58.4264, 0.3429, 0.3348



58.4264, 0.3443, 0.3476

Triad

The Triadic color harmony groups three colors that are evenly spaced from another and form a triangle on the color wheel.



58.4264, 0.3429, 0.3348



58.4264, 0.3069, 0.3500



58.4264, 0.2887, 0.3025

Complementary

The Complementary color scheme is a pair of colors which are on the opposite of each other on the color wheel.



58.4264, 0.3429, 0.3348



68.0007, 0.2877, 0.3231

Split Complementary

Split-complementary colors differ from the complementary color scheme. The scheme consists of three colors, the original color and two neighbors of the complement color.



58.4264, 0.2821, 0.3094



58.4264, 0.3429, 0.3348



58.4264, 0.2924, 0.3370

Square

The Square scheme is like the rectangle color scheme, but the four colors are evenly spaced on the color wheel.



58.4264, 0.3429, 0.3348



58.4264, 0.3232, 0.3570



58.4264, 0.2834, 0.3220



58.4264, 0.3017, 0.3026

Rectangle

The Rectangle color scheme consists of four colors that form a rectangle on the color wheel.



58.4264, 0.3429, 0.3348



58.4264, 0.3403, 0.3539



58.4264, 0.2834, 0.3220



58.4264, 0.2856, 0.3041

Sweetspot

The Sweet Spot groups the original color and five complimentary colors.



58.4290, 0.3429, 0.3348



92.3787, 0.3209, 0.3307



57.7734, 0.3183, 0.2937



19.5513, 0.3222, 0.3310



0.0000, 0.0000, 0.0000



21.4041, 0.3127, 0.3290

Same Dimension

The Same Dimension uses a secret algorithm to generate beautiful new colors.



58.4290, 0.3429, 0.3348



72.1800, 0.3513, 0.3362



67.1431, 0.3396, 0.3552



13.9999, 0.3289, 0.3323



9.8757, 0.6274, 0.3401



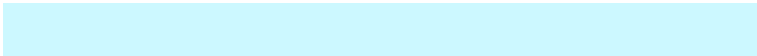
0.7826, 0.6028, 0.3596

Inverse Universe

The Inverse Universe completely reimagines the original color for something new.



68.0007, 0.2877, 0.3231



87.2270, 0.2822, 0.3217



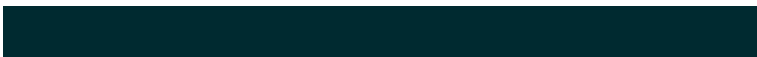
58.8034, 0.2868, 0.3014



15.2374, 0.2982, 0.3257



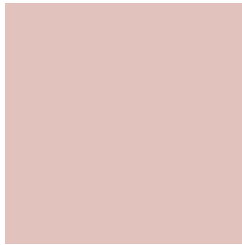
25.5876, 0.2126, 0.2855



1.8627, 0.2147, 0.2928

Previews

White Background



This preview shows how the Yxy color 58.4264, 0.3429, 0.3348 looks on a white background.

Color Contrast Check

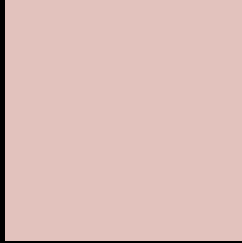
Large Text (above 18pt) WCAG AA × Fail

Any Text WCAG AA × Fail

Large Text (above 18pt) WCAG AAA × Fail

Any Text WCAG AAA × Fail

Black Background



This preview shows how the Yxy color 58.4264, 0.3429, 0.3348 looks on a black background.

Color Contrast Check

Large Text (above 18pt) WCAG AA ✓ Pass

Any Text WCAG AA ✓ Pass

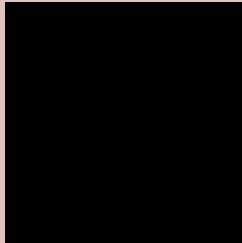
Large Text (above 18pt) WCAG AAA ✓ Pass

Any Text WCAG AAA ✓ Pass

If you want to check with other color combinations, try the [Color Contrast Checker](#).

Yxy 58.4264, 0.3429, 0.3348

Background



This preview shows how black text looks on a background with the Yxy color 58.4264, 0.3429, 0.3348.



This preview shows how white text looks on a background with the Yxy color 58.4264, 0.3429, 0.3348.

Color Blindness Simulation

Color vision deficiency is a very complex topic, and I could not describe the different causes any better than Wikipedia does, so if you want to learn more, you should check out their [article about color blindness](#).

Dichromacy



Original Color

58.4264, 0.3429, 0.3348

Protanopia

58.3797, 0.3241, 0.3385

Deuteranopia

58.2652, 0.3420, 0.3348



Tritanopia

58.2118, 0.3315, 0.3124

Trichromacy



Original Color

58.4264, 0.3429, 0.3348

Protanomaly

58.4459, 0.3308, 0.3372

Deuteranomaly

58.2652, 0.3420, 0.3348

Tritanomaly

58.2003, 0.3352, 0.3201

Monochromacy



Original Color

58.4264, 0.3429, 0.3348

Achromatopsia

59.7202, 0.3127, 0.3290

Achromatomaly

59.2347, 0.3228, 0.3314

CSS Examples

Text

The CSS property to change the color of the text to Yxy 58.4264, 0.3429, 0.3348 is called "color". The color property can be set on classes, ids or directly on the HTML element.

This example shows how text in the color `rgb(226, 194, 189)` looks like.

```
.text, #text, p{  
    color:rgb(226, 194, 189)  
}
```

If you want to add a text shadow in that color use the text-shadow property, you can generate a text shadow directly with our [CSS Text Shadow Generator](#).

Here you see how black text with a 4 pixel rgb(226, 194, 189) colored shadow looks like.

```
.shadow{ text-shadow: 4px 4px 2px rgb(226, 194, 189) }
```

Border

The CSS property to change the border of an element to Yxy 58.4264, 0.3429, 0.3348 is called "border". The border property can be set on classes, ids or directly on the HTML element.

This example shows the color as border, it can be applied via the CSS property "border" or "border-color".

```
.border, #border, table{ border:4px solid rgb(226, 194, 189) }
```

If only the border color should be changed use the property `border-color`.

```
.border{ border-color:rgb(226, 194, 189) }
```

If you want to add a box shadow in that color use:

Here you see how a box with a 4 pixel `rgb(226, 194, 189)` colored shadow looks like.

```
.boxshadow{ -moz-box-shadow:4px 4px 4px  
4px rgb(226, 194, 189); -webkit-box-  
shadow:4px 4px 4px 4px rgb(226, 194, 189);  
box-shadow:4px 4px 4px 4px rgb(226, 194,  
189) }
```


Background

The CSS property to change the background color of an element to Yxy 58.4264, 0.3429, 0.3348 is called "background". The background property can be set on classes, ids or directly on the HTML element.

```
.background, #background, body{  
background: rgb(226, 194, 189) }
```

If only the background color should be changed can be used:

```
.background{ background-color: rgb(226,  
194, 189) }
```

This example shows the color as background, it is applied via the CSS property "background".

To optimize and compress your CSS code, you can use our [online CSS compressor and optimizer](#) based on csstidy. If you want to create a linear or radial gradient as background or border, check our [CSS Gradient Generator](#).

Hey! You found this booklet interesting? Support Converting Colors with the new Membership Option!

The pro membership hides all ads, plus gives you double the colors in the color bucket, and more awesome pro features!

[Learn more, Memberships starting at \\$2.50/m!](#)

**Follow me
on Twitter!**

@ConvertingColor