

Converting Colors

$Yxy(58.6609, 0.3407, 0.3391)$

Have a look what the booklet for
Yxy(58.6609, 0.3407, 0.3391)
contains.

Yxy(58.5973, 0.3408, 0.3394)	3
Conversions	4
Details	6
Harmonies	12
Previews	24
Color Blindness Simulation	27
CSS Examples	30

Color

Yxy(58.5973, 0.3408, 0.3394)

Conversions

Conversions Part 1

Format	Color
Hex	DEC4BB
RGB	222, 196, 187
RGB Percent	87%, 77%, 73%
CMY	0.1293, 0.2314, 0.2667
CMYK	0.00, 0.12, 0.16, 0.13
HSL	15°, 35%, 80%
HSV	15°, 16%, 87%
XYZ	58.8390, 58.5973, 55.2134
YIQ	202.7480, 18.3850, 2.7130

Conversions

Conversions Part 2

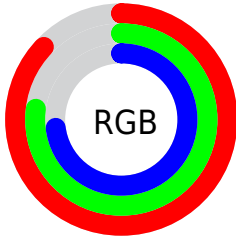
Format	Color
R _Y B	222, 199, 187
Decimal	14599355
CIE Lab	81.07, 7.73, 7.87
CIE LCh	81, 11.034, 45.534
Yxy	58.5973, 0.3408, 0.3394
Android (android.graphics.Color)	4292789435 (0xFFDEC4BB)
YUV	202.7480, -7.7638, 16.8840
Hunter-Lab	76.5489, 3.2428, 10.8194

Details

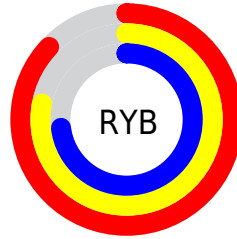
The Yxy color **58.5973, 0.3408, 0.3394** is a light color, and the websafe version is hex **CCCCCC**. A complement of this color would be **63.4359, 0.2885, 0.3184**, and the grayscale version is **59.5983, 0.3127, 0.3290**.

A 20% lighter version of the original color is **97.9816, 0.3198, 0.3386**, and **29.2827, 0.3485, 0.3412** is the 20% darker color. If you saturate the color by 10%, you get **50.6854, 0.3632, 0.3465**, and if you desaturate by 10%, it is **67.4795, 0.3221, 0.3327**.

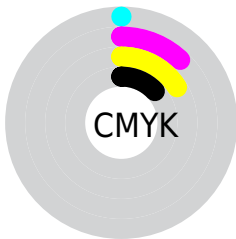
Distribution



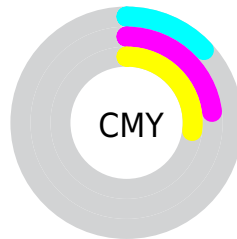
- Red (87%)
- Green (77%)
- Blue (73%)



- Red (87%)
- Yellow (78%)
- Blue (73%)



- Cyan (0%)
- Magenta (12%)
- Yellow (16%)
- Black (13%)




- Cyan (13%)
- Magenta (23%)
- Yellow (27%)

Brightness & Saturation Gradients


These gradients show how the Yxy color 58.5973, 0.3408, 0.3394 changes by changing the brightness by 10 percent. The first figure shows a shift by +10% for each color and the second figure -10%.


Similar to the brightness gradients but the following saturation gradients show a change of the Yxy color 58.5973, 0.3408, 0.3394 by changing the saturation by 10% instead.

 58.5973, 0.3408,
0.3394

 58.5973, 0.3408,
0.3394

419.4079, 0.3272,
0.3346

 42.2890, 0.3441,
0.3405


 102.7922, 0.3360,
0.3377

 29.3277, 0.3482,
0.3419


131.4475, 0.3341,
0.3371

 19.3288, 0.3535,
0.3436


164.9874, 0.3325,
0.3365

 11.9081, 0.3608,
0.3459

203.7962, 0.3312,
0.3360

 6.6812, 0.3711,
0.3490

248.2582, 0.3300,
0.3356

 3.2635, 0.3871,
0.3535

298.7579, 0.3290,

 1.2708, 0.4161,

0.3352

0.3612

355.6797, 0.3280,
0.3349

0.1184, 0.7178,
0.2822

0.0000, 0.0000,
0.0000

58.5973, 0.3408,
0.3394

58.5973, 0.3408,
0.3394

50.6854, 0.3632,
0.3465

67.4795, 0.3221,
0.3327

43.7027, 0.3897,
0.3536

77.3554, 0.3065,
0.3264

37.6170, 0.4207,
0.3605

88.2577, 0.2934,
0.3207

32.3910, 0.4560,
0.3662

94.2744, 0.2929,
0.3289

■ 27.9846, 0.4944,
0.3699

■ 24.3547, 0.5335,
0.3705

■ 21.4535, 0.5695,
0.3669

■ 19.2273, 0.5981,
0.3591

■ 18.4702, 0.6081,
0.3554

Harmonies

Analogous

The Analogous color harmony consists of three colors that are next to each other on the color wheel.



58.5973, 0.3352, 0.3271



58.5973, 0.3408, 0.3394



58.5973, 0.3386, 0.3493

Triad

The Triadic color harmony groups three colors that are evenly spaced from another and form a triangle on the color wheel.



58.5973, 0.3408, 0.3394



58.5973, 0.3017, 0.3430



58.5973, 0.2959, 0.3048

Complementary

The Complementary color scheme is a pair of colors which are on the opposite of each other on the color wheel.



58.5973, 0.3408, 0.3394



63.4359, 0.2885, 0.3184

Split Complementary

Split-complementary colors differ from the complementary color scheme. The scheme consists of three colors, the original color and two neighbors of the complement color.



58.5973, 0.2873, 0.3084



58.5973, 0.3408, 0.3394



58.5973, 0.2906, 0.3303

Square

The Square scheme is like the rectangle color scheme, but the four colors are evenly spaced on the color wheel.



58.5973, 0.3408, 0.3394



58.5973, 0.3158, 0.3518



58.5973, 0.2854, 0.3176



58.5973, 0.3091, 0.3075

Rectangle

The Rectangle color scheme consists of four colors that form a rectangle on the color wheel.



58.5973, 0.3408, 0.3394



58.5973, 0.3331, 0.3532



58.5973, 0.2854, 0.3176



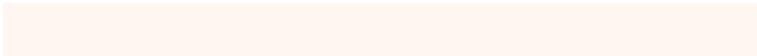
58.5973, 0.2924, 0.3053

Sweetspot

The Sweet Spot groups the original color and five complimentary colors.



58.5999, 0.3408, 0.3394



93.3111, 0.3208, 0.3322



55.8861, 0.3213, 0.2995



19.7772, 0.3220, 0.3327



0.0000, 0.0000, 0.0000



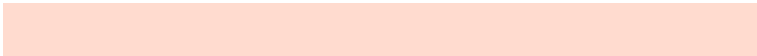
21.4041, 0.3127, 0.3290

Same Dimension

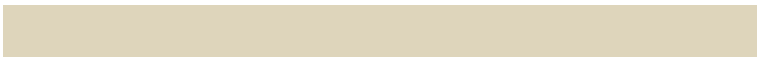
The Same Dimension uses a secret algorithm to generate beautiful new colors.



58.5999, 0.3408, 0.3394



76.4109, 0.3479, 0.3418



66.8454, 0.3378, 0.3586



14.2706, 0.3286, 0.3351



11.1200, 0.6055, 0.3574



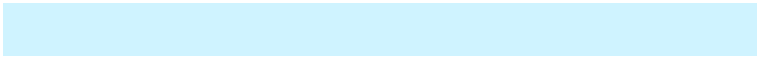
0.9136, 0.5752, 0.3815

Inverse Universe

The Inverse Universe completely reimagines the original color for something new.



63.4359, 0.2885, 0.3184



84.2473, 0.2833, 0.3159



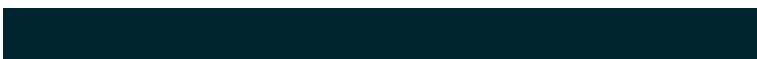
55.2036, 0.2876, 0.2975



14.9444, 0.2982, 0.3228



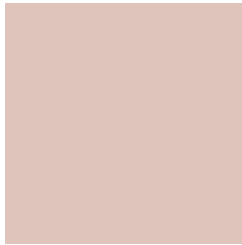
19.2855, 0.2010, 0.2437



1.4783, 0.2051, 0.2584

Previews

White Background



This preview shows how the Yxy color 58.5973, 0.3408, 0.3394 looks on a white background.

Color Contrast Check

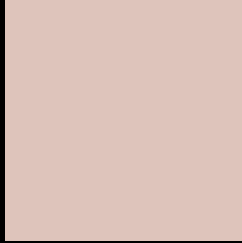
Large Text (above 18pt) WCAG AA × Fail

Any Text WCAG AA × Fail

Large Text (above 18pt) WCAG AAA × Fail

Any Text WCAG AAA × Fail

Black Background



This preview shows how the Yxy color 58.5973, 0.3408, 0.3394 looks on a black background.

Color Contrast Check

Large Text (above 18pt) WCAG AA ✓ Pass

Any Text WCAG AA ✓ Pass

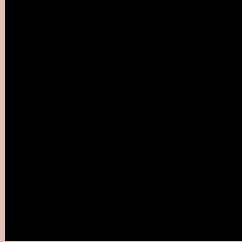
Large Text (above 18pt) WCAG AAA ✓ Pass

Any Text WCAG AAA ✓ Pass

If you want to check with other color combinations, try the [Color Contrast Checker](#).

Yxy 58.5973, 0.3408, 0.3394

Background



This preview shows how black text looks on a background with the Yxy color 58.5973, 0.3408, 0.3394.



This preview shows how white text looks on a background with the Yxy color 58.5973, 0.3408, 0.3394.

Color Blindness Simulation

Color vision deficiency is a very complex topic, and I could not describe the different causes any better than Wikipedia does, so if you want to learn more, you should check out their [article about color blindness](#).

Dichromacy



Original Color

58.5973, 0.3408, 0.3394

Protanopia

58.9009, 0.3263, 0.3420

Deuteranopia

58.3402, 0.3445, 0.3370



Tritanopia

58.7015, 0.3272, 0.3123

Trichromacy



Original Color

58.5973, 0.3408, 0.3394

Protanomaly

58.6671, 0.3313, 0.3407

Deuteranomaly

58.6256, 0.3434, 0.3382

Tritanomaly

58.6010, 0.3325, 0.3223

Monochromacy



Original Color

58.5973, 0.3408, 0.3394

Achromatopsia

59.7202, 0.3127, 0.3290

Achromatomaly

59.0414, 0.3228, 0.3325

CSS Examples

Text

The CSS property to change the color of the text to Yxy 58.5973, 0.3408, 0.3394 is called "color". The color property can be set on classes, ids or directly on the HTML element.

This example shows how text in the color `rgb(222, 196, 187)` looks like.

```
.text, #text, p{  
    color:rgb(222, 196, 187)  
}
```

If you want to add a text shadow in that color use the text-shadow property, you can generate a text shadow directly with our [CSS Text Shadow Generator](#).

Here you see how black text with a 4 pixel rgb(222, 196, 187) colored shadow looks like.

```
.shadow{ text-shadow: 4px 4px 2px rgb(222, 196, 187) }
```

Border

The CSS property to change the border of an element to Yxy 58.5973, 0.3408, 0.3394 is called "border". The border property can be set on classes, ids or directly on the HTML element.

This example shows the color as border, it can be applied via the CSS property "border" or "border-color".

```
.border, #border, table{ border:4px solid rgb(222, 196, 187) }
```

If only the border color should be changed use the property `border-color`.

```
.border{ border-color:rgb(222, 196, 187) }
```

If you want to add a box shadow in that color use:

Here you see how a box with a 4 pixel `rgb(222, 196, 187)` colored shadow looks like.

```
.boxshadow{ -moz-box-shadow:4px 4px 4px 4px rgb(222, 196, 187); -webkit-box-shadow:4px 4px 4px 4px rgb(222, 196, 187); box-shadow:4px 4px 4px 4px rgb(222, 196, 187) }
```


Background

The CSS property to change the background color of an element to Yxy 58.5973, 0.3408, 0.3394 is called "background". The background property can be set on classes, ids or directly on the HTML element.

```
.background, #background, body{  
background: rgb(222, 196, 187) }
```

If only the background color should be changed can be used:

```
.background{ background-color: rgb(222,  
196, 187) }
```

This example shows the color as background, it is applied via the CSS property "background".

To optimize and compress your CSS code, you can use our [online CSS compressor and optimizer](#) based on csstidy. If you want to create a linear or radial gradient as background or border, check our [CSS Gradient Generator](#).

Hey! You found this booklet interesting? Support Converting Colors with the new Membership Option!

The pro membership hides all ads, plus gives you double the colors in the color bucket, and more awesome pro features!

[Learn more, Memberships starting at \\$2.50/m!](#)

**Follow me
on Twitter!**

@ConvertingColor