

Converting Colors

Yxy(58.6892, 0.3281, 0.3338)

Have a look what the booklet for
Yxy(58.6892, 0.3281, 0.3338)
contains.

Yxy(58.5794, 0.3285, 0.3337)	3
Conversions	4
Details	6
Harmonies	12
Previews	24
Color Blindness Simulation	27
CSS Examples	30

Color

Yxy(58.5794, 0.3285, 0.3337)

Conversions

Conversions Part 1

Format	Color
Hex	D6C6C2
RGB	214, 198, 194
RGB Percent	84%, 78%, 76%
CMY	0.1607, 0.2235, 0.2393
CMYK	0.00, 0.07, 0.09, 0.16
HSL	12°, 20%, 80%
HSV	12°, 9%, 84%
XYZ	57.6666, 58.5794, 59.2991
YIQ	202.3280, 10.8200, 2.1480

Conversions

Conversions Part 2

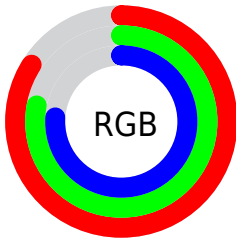
Format	Color
R _Y B	214, 199, 194
Decimal	14075586
CIE Lab	81.06, 4.92, 4.02
CIE LCh	81, 6.354, 39.216
Yxy	58.5794, 0.3285, 0.3337
Android (android.graphics.Color)	4292265666 (0xFFD6C6C2)
YUV	202.3280, -4.1057, 10.2363
Hunter-Lab	76.5372, 0.5499, 7.6396

Details

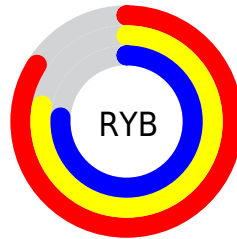
The Yxy color **58.5794, 0.3285, 0.3337** is a light color, and the websafe version is hex **CCCCCC**. A complement of this color would be **62.4224, 0.2983, 0.3243**, and the grayscale version is **59.3017, 0.3127, 0.3290**.

A 20% lighter version of the original color is **99.6821, 0.3156, 0.3338**, and **29.2109, 0.3329, 0.3352** is the 20% darker color. If you saturate the color by 10%, you get **50.3006, 0.3488, 0.3391**, and if you desaturate by 10%, it is **67.8862, 0.3117, 0.3287**.

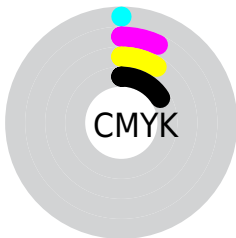
Distribution



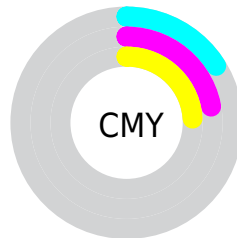
- Red (84%)
- Green (78%)
- Blue (76%)



- Red (84%)
- Yellow (78%)
- Blue (76%)



- Cyan (0%)
- Magenta (7%)
- Yellow (9%)
- Black (16%)




- Cyan (16%)
- Magenta (22%)
- Yellow (24%)

Brightness & Saturation Gradients

These gradients show how the Yxy color 58.5794, 0.3285, 0.3337 changes by changing the brightness by 10 percent. The first figure shows a shift by +10% for each color and the second figure -10%.


Similar to the brightness gradients but the following saturation gradients show a change of the Yxy color 58.5794, 0.3285, 0.3337 by changing the saturation by 10% instead.


 58.5794, 0.3285,
0.3337

 58.5794, 0.3285,
0.3337


419.3415, 0.3209,
0.3315

 42.2746, 0.3303,
0.3342


 102.7661, 0.3258,
0.3329

 29.3164, 0.3326,
0.3349


131.4169, 0.3248,
0.3326

 19.3203, 0.3356,
0.3357


164.9517, 0.3239,
0.3324

 11.9019, 0.3397,
0.3368

203.7551, 0.3231,
0.3322

 6.6769, 0.3455,
0.3383

248.2113, 0.3224,
0.3320

 3.2609, 0.3544,
0.3405

298.7049, 0.3219,

 1.2694, 0.3701,

0.3318

0.3440

355.6201, 0.3213,
0.3316

0.1173, 0.6638,
0.3362

0.0000, 0.0000,
0.0000

58.5794, 0.3285,
0.3337

58.5794, 0.3285,
0.3337

50.3006, 0.3488,
0.3391

67.8862, 0.3117,
0.3287

43.0069, 0.3732,
0.3447

78.2466, 0.2979,
0.3241

36.6636, 0.4024,
0.3502

89.4878, 0.2881,
0.3231

31.2312, 0.4366,
0.3552

93.0394, 0.2883,
0.3289

■ 26.6672, 0.4753,
0.3591

■ 22.9259, 0.5167,
0.3608

■ 19.9570, 0.5572,
0.3595

■ 17.7046, 0.5921,
0.3546

■ 16.0998, 0.6176,
0.3471

Harmonies

Analogous

The Analogous color harmony consists of three colors that are next to each other on the color wheel.



58.5794, 0.3245, 0.3265



58.5794, 0.3285, 0.3337



58.5794, 0.3282, 0.3398

Triad

The Triadic color harmony groups three colors that are evenly spaced from another and form a triangle on the color wheel.



58.5794, 0.3285, 0.3337



58.5794, 0.3080, 0.3383



58.5794, 0.3017, 0.3151

Complementary

The Complementary color scheme is a pair of colors which are on the opposite of each other on the color wheel.



58.5794, 0.3285, 0.3337



62.4224, 0.2983, 0.3243

Split Complementary

Split-complementary colors differ from the complementary color scheme. The scheme consists of three colors, the original color and two neighbors of the complement color.



58.5794, 0.2974, 0.3181



58.5794, 0.3285, 0.3337



58.5794, 0.3011, 0.3314

Square

The Square scheme is like the rectangle color scheme, but the four colors are evenly spaced on the color wheel.



58.5794, 0.3285, 0.3337



58.5794, 0.3163, 0.3426



58.5794, 0.2972, 0.3240



58.5794, 0.3090, 0.3159

Rectangle

The Rectangle color scheme consists of four colors that form a rectangle on the color wheel.



58.5794, 0.3285, 0.3337



58.5794, 0.3256, 0.3424



58.5794, 0.2972, 0.3240



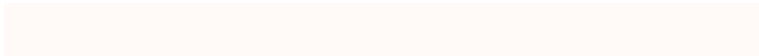
58.5794, 0.2999, 0.3157

Sweetspot

The Sweet Spot groups the original color and five complimentary colors.



58.5820, 0.3285, 0.3337



95.6753, 0.3175, 0.3305



57.5319, 0.3168, 0.3107



20.2362, 0.3189, 0.3309



0.0000, 0.0000, 0.0000



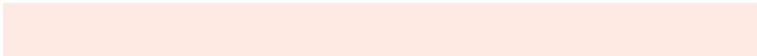
21.4041, 0.3127, 0.3290

Same Dimension

The Same Dimension uses a secret algorithm to generate beautiful new colors.



58.5820, 0.3285, 0.3337



84.8358, 0.3318, 0.3346



63.3113, 0.3273, 0.3451



12.8194, 0.3286, 0.3337



9.7971, 0.6168, 0.3485



0.7096, 0.5837, 0.3748

Inverse Universe

The Inverse Universe completely reimagines the original color for something new.



62.4224, 0.2983, 0.3243



91.5316, 0.2957, 0.3233



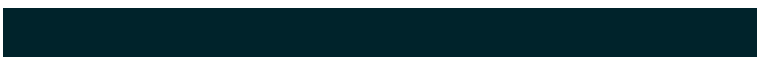
57.6319, 0.2983, 0.3123



13.6658, 0.2983, 0.3242



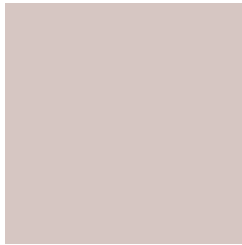
20.7243, 0.2066, 0.2638



1.3598, 0.2101, 0.2763

Previews

White Background



This preview shows how the Yxy color 58.5794, 0.3285, 0.3337 looks on a white background.

Color Contrast Check

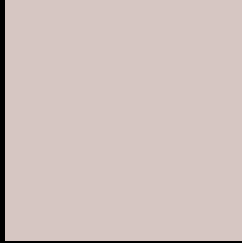
Large Text (above 18pt) WCAG AA × Fail

Any Text WCAG AA × Fail

Large Text (above 18pt) WCAG AAA × Fail

Any Text WCAG AAA × Fail

Black Background



This preview shows how the Yxy color 58.5794, 0.3285, 0.3337 looks on a black background.

Color Contrast Check

Large Text (above 18pt) WCAG AA ✓ Pass

Any Text WCAG AA ✓ Pass

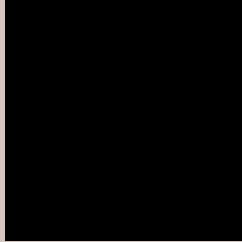
Large Text (above 18pt) WCAG AAA ✓ Pass

Any Text WCAG AAA ✓ Pass

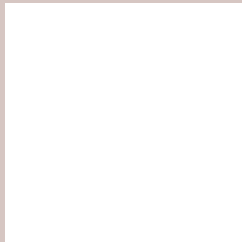
If you want to check with other color combinations, try the [Color Contrast Checker](#).

Yxy 58.5794, 0.3285, 0.3337

Background



This preview shows how black text looks on a background with the Yxy color 58.5794, 0.3285, 0.3337.



This preview shows how white text looks on a background with the Yxy color 58.5794, 0.3285, 0.3337.

Color Blindness Simulation

Color vision deficiency is a very complex topic, and I could not describe the different causes any better than Wikipedia does, so if you want to learn more, you should check out their [article about color blindness](#).

Dichromacy



Original Color

58.5794, 0.3285, 0.3337

Protanopia

58.3705, 0.3211, 0.3349

Deuteranopia

58.6583, 0.3355, 0.3291



Tritanopia

58.3323, 0.3175, 0.3108

Trichromacy



Original Color

58.5794, 0.3285, 0.3337

Protanomaly

58.3423, 0.3236, 0.3337

Deuteranomaly

58.6356, 0.3329, 0.3302

Tritanomaly

58.3347, 0.3212, 0.3187

Monochromacy



Original Color

58.5794, 0.3285, 0.3337

Achromatopsia

59.0619, 0.3127, 0.3290

Achromatomaly

59.0186, 0.3181, 0.3314

CSS Examples

Text

The CSS property to change the color of the text to Yxy 58.5794, 0.3285, 0.3337 is called "color". The color property can be set on classes, ids or directly on the HTML element.

This example shows how text in the color `rgb(214, 198, 194)` looks like.

```
.text, #text, p{  
    color:rgb(214, 198, 194)  
}
```

If you want to add a text shadow in that color use the text-shadow property, you can generate a text shadow directly with our [CSS Text Shadow Generator](#).

Here you see how black text with a 4 pixel rgb(214, 198, 194) colored shadow looks like.

```
.shadow{ text-shadow: 4px 4px 2px rgb(214, 198, 194) }
```

Border

The CSS property to change the border of an element to Yxy 58.5794, 0.3285, 0.3337 is called "border". The border property can be set on classes, ids or directly on the HTML element.

This example shows the color as border, it can be applied via the CSS property "border" or "border-color".

```
.border, #border, table{ border:4px solid rgb(214, 198, 194) }
```

If only the border color should be changed use the property `border-color`.

```
.border{ border-color:rgb(214, 198, 194) }
```

If you want to add a box shadow in that color use:

Here you see how a box with a 4 pixel `rgb(214, 198, 194)` colored shadow looks like.

```
.boxshadow{ -moz-box-shadow:4px 4px 4px 4px rgb(214, 198, 194); -webkit-box-shadow:4px 4px 4px 4px rgb(214, 198, 194); box-shadow:4px 4px 4px 4px rgb(214, 198, 194) }
```


Background

The CSS property to change the background color of an element to Yxy 58.5794, 0.3285, 0.3337 is called "background". The background property can be set on classes, ids or directly on the HTML element.

```
.background, #background, body{  
background: rgb(214, 198, 194) }
```

If only the background color should be changed can be used:

```
.background{ background-color: rgb(214,  
198, 194) }
```

This example shows the color as background, it is applied via the CSS property "background".

To optimize and compress your CSS code, you can use our [online CSS compressor and optimizer](#) based on csstidy. If you want to create a linear or radial gradient as background or border, check our [CSS Gradient Generator](#).

Hey! You found this booklet interesting? Support Converting Colors with the new Membership Option!

The pro membership hides all ads, plus gives you double the colors in the color bucket, and more awesome pro features!

[Learn more, Memberships starting at \\$2.50/m!](#)

**Follow me
on Twitter!**

@ConvertingColor