

Converting Colors

Yxy(58.7727, 0.3329, 0.3419)

Have a look what the booklet for
Yxy(58.7727, 0.3329, 0.3419)
contains.

Yxy(58.7738, 0.3329, 0.3419)	3
Conversions	4
Details	6
Harmonies	12
Previews	24
Color Blindness Simulation	27
CSS Examples	30

Color

Yxy(58.7738, 0.3329, 0.3419)

Conversions

Conversions Part 1

Format	Color
Hex	D6C7BC
RGB	214, 199, 188
RGB Percent	84%, 78%, 74%
CMY	0.1609, 0.2196, 0.2628
CMYK	0.00, 0.07, 0.12, 0.16
HSL	25°, 24%, 79%
HSV	25°, 12%, 84%
XYZ	57.2267, 58.7738, 55.9030
YIQ	202.2310, 12.4710, -0.2410

Conversions

Conversions Part 2

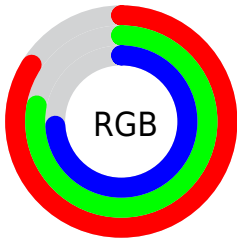
Format	Color
R _Y B	214, 207, 188
Decimal	14075836
CIE Lab	81.17, 3.38, 7.38
CIE LCh	81, 8.119, 65.388
Yxy	58.7738, 0.3329, 0.3419
Android (android.graphics.Color)	4292265916 (0xFFD6C7BC)
YUV	202.2310, -7.0159, 10.3214
Hunter-Lab	76.6641, -0.9190, 10.4309

Details

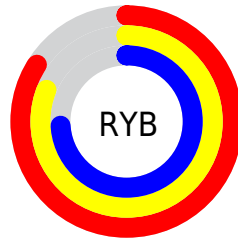
The Yxy color **58.7738, 0.3329, 0.3419** is a light color, and the websafe version is hex **CCCCCC**. A complement of this color would be **58.2388, 0.2940, 0.3158**, and the grayscale version is **59.2528, 0.3127, 0.3290**.

A 20% lighter version of the original color is **99.3117, 0.3191, 0.3396**, and **29.3710, 0.3378, 0.3446** is the 20% darker color. If you saturate the color by 10%, you get **52.4765, 0.3525, 0.3532**, and if you desaturate by 10%, it is **65.6726, 0.3160, 0.3312**.

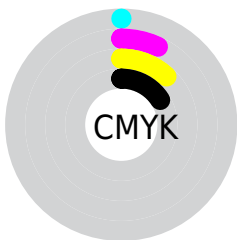
Distribution



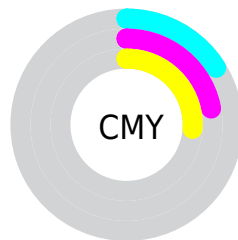
- Red (84%)
- Green (78%)
- Blue (74%)



- Red (84%)
- Yellow (81%)
- Blue (74%)



- Cyan (0%)
- Magenta (7%)
- Yellow (12%)
- Black (16%)




- Cyan (16%)
- Magenta (22%)
- Yellow (26%)

Brightness & Saturation Gradients


These gradients show how the Yxy color 58.7738, 0.3329, 0.3419 changes by changing the brightness by 10 percent. The first figure shows a shift by +10% for each color and the second figure -10%.

Similar to the brightness gradients but the following saturation gradients show a change of the Yxy color 58.7738, 0.3329, 0.3419 by changing the saturation by 10% instead.

 58.7738, 0.3329,
0.3419

 58.7738, 0.3329,
0.3419


420.0631, 0.3232,
0.3358

 42.4311, 0.3352,
0.3433


 103.0488, 0.3294,
0.3397

 29.4390, 0.3382,
0.3452

131.7499, 0.3281,
0.3389

 19.4131, 0.3420,
0.3475


165.3392, 0.3270,
0.3382

 11.9692, 0.3471,
0.3506

204.2012, 0.3260,
0.3376

 6.7227, 0.3545,
0.3550

248.7201, 0.3252,
0.3370

 3.2893, 0.3658,
0.3615

299.2805, 0.3244,

 1.2846, 0.3861,

0.3366

0.3729

356.2667, 0.3238,
0.3361

0.1292, 0.6138,
0.3862

0.0000, 0.0000,
0.0000

58.7738, 0.3329,
0.3419

58.7738, 0.3329,
0.3419

52.4765, 0.3525,
0.3532

65.6726, 0.3160,
0.3312

46.7559, 0.3749,
0.3648

73.1810, 0.3015,
0.3212

41.5972, 0.4004,
0.3762

81.3172, 0.2890,
0.3120

36.9814, 0.4287,
0.3867

88.8403, 0.2880,
0.3221

■ 32.8888, 0.4592,
0.3952

■ 93.0328, 0.2883,
0.3289

■ 29.2981, 0.4904,
0.4005

■ 26.1860, 0.5203,
0.4013

■ 23.5265, 0.5467,
0.3967

■ 21.7284, 0.5644,
0.3900

Harmonies

Analogous

The Analogous color harmony consists of three colors that are next to each other on the color wheel.



58.7738, 0.3325, 0.3338



58.7738, 0.3329, 0.3419



58.7738, 0.3278, 0.3467

Triad

The Triadic color harmony groups three colors that are evenly spaced from another and form a triangle on the color wheel.



58.7738, 0.3329, 0.3419



58.7738, 0.2988, 0.3333



58.7738, 0.3066, 0.3119

Complementary

The Complementary color scheme is a pair of colors which are on the opposite of each other on the color wheel.



58.7738, 0.3329, 0.3419



58.2388, 0.2940, 0.3158

Split Complementary

Split-complementary colors differ from the complementary color scheme. The scheme consists of three colors, the original color and two neighbors of the complement color.



58.7738, 0.2977, 0.3115



58.7738, 0.3329, 0.3419



58.7738, 0.2933, 0.3237

Square

The Square scheme is like the rectangle color scheme, but the four colors are evenly spaced on the color wheel.



58.7738, 0.3329, 0.3419



58.7738, 0.3080, 0.3418



58.7738, 0.2929, 0.3158



58.7738, 0.3172, 0.3167

Rectangle

The Rectangle color scheme consists of four colors that form a rectangle on the color wheel.



58.7738, 0.3329, 0.3419



58.7738, 0.3220, 0.3473



58.7738, 0.2929, 0.3158



58.7738, 0.3033, 0.3113

Sweetspot

The Sweet Spot groups the original color and five complimentary colors.



58.7764, 0.3329, 0.3419



95.6689, 0.3190, 0.3332



54.5772, 0.3225, 0.3115



20.3063, 0.3203, 0.3340



0.0000, 0.0000, 0.0000



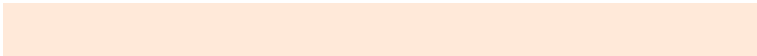
21.4041, 0.3127, 0.3290

Same Dimension

The Same Dimension uses a secret algorithm to generate beautiful new colors.



58.7764, 0.3329, 0.3419



84.5166, 0.3385, 0.3452



64.9168, 0.3311, 0.3564



13.2777, 0.3281, 0.3389



13.3331, 0.5619, 0.3921



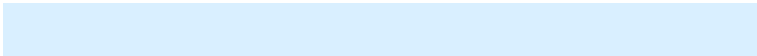
0.9662, 0.5314, 0.4163

Inverse Universe

The Inverse Universe completely reimagines the original color for something new.



58.2388, 0.2940, 0.3158



83.5388, 0.2892, 0.3122



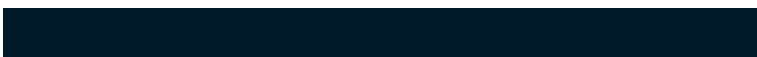
52.4423, 0.2936, 0.3000



13.1846, 0.2982, 0.3189



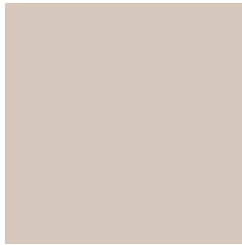
11.7466, 0.1847, 0.1847



0.8710, 0.1923, 0.2121

Previews

White Background



This preview shows how the Yxy color 58.7738, 0.3329, 0.3419 looks on a white background.

Color Contrast Check

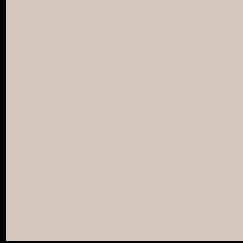
Large Text (above 18pt) WCAG AA × Fail

Any Text WCAG AA × Fail

Large Text (above 18pt) WCAG AAA × Fail

Any Text WCAG AAA × Fail

Black Background



This preview shows how the Yxy color 58.7738, 0.3329, 0.3419 looks on a black background.

Color Contrast Check

Large Text (above 18pt) WCAG AA ✓ Pass

Any Text WCAG AA ✓ Pass

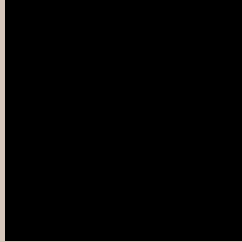
Large Text (above 18pt) WCAG AAA ✓ Pass

Any Text WCAG AAA ✓ Pass

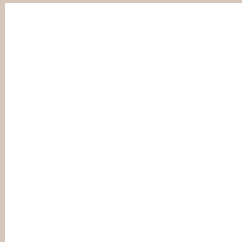
If you want to check with other color combinations, try the [Color Contrast Checker](#).

Yxy 58.7738, 0.3329, 0.3419

Background



This preview shows how black text looks on a background with the Yxy color 58.7738, 0.3329, 0.3419.



This preview shows how white text looks on a background with the Yxy color 58.7738, 0.3329, 0.3419.

Color Blindness Simulation

Color vision deficiency is a very complex topic, and I could not describe the different causes any better than Wikipedia does, so if you want to learn more, you should check out their [article about color blindness](#).

Dichromacy



Original Color

58.7738, 0.3329, 0.3419

Protanopia

58.8573, 0.3270, 0.3432

Deuteranopia

58.8731, 0.3427, 0.3359



Tritanopia

58.9347, 0.3183, 0.3120

Trichromacy



Original Color

58.7738, 0.3329, 0.3419

Protanomaly

58.6843, 0.3288, 0.3420

Deuteranomaly

58.6836, 0.3392, 0.3371

Tritanomaly

58.8432, 0.3234, 0.3222

Monochromacy



Original Color

58.7738, 0.3329, 0.3419

Achromatopsia

59.0619, 0.3127, 0.3290

Achromatomaly

58.9263, 0.3195, 0.3337

CSS Examples

Text

The CSS property to change the color of the text to Yxy 58.7738, 0.3329, 0.3419 is called "color". The color property can be set on classes, ids or directly on the HTML element.

This example shows how text in the color `rgb(214, 199, 188)` looks like.

```
.text, #text, p{  
    color:rgb(214, 199, 188)  
}
```

If you want to add a text shadow in that color use the text-shadow property, you can generate a text shadow directly with our [CSS Text Shadow Generator](#).

Here you see how black text with a 4 pixel rgb(214, 199, 188) colored shadow looks like.

```
.shadow{ text-shadow: 4px 4px 2px rgb(214, 199, 188) }
```

Border

The CSS property to change the border of an element to Yxy 58.7738, 0.3329, 0.3419 is called "border". The border property can be set on classes, ids or directly on the HTML element.

This example shows the color as border, it can be applied via the CSS property "border" or "border-color".

```
.border, #border, table{ border:4px solid rgb(214, 199, 188) }
```

If only the border color should be changed use the property border-color.

```
.border{ border-color:rgb(214, 199, 188) }
```

If you want to add a box shadow in that color use:

Here you see how a box with a 4 pixel rgb(214, 199, 188) colored shadow looks like.

```
.boxshadow{ -moz-box-shadow:4px 4px 4px  
4px rgb(214, 199, 188); -webkit-box-  
shadow:4px 4px 4px 4px rgb(214, 199, 188);  
box-shadow:4px 4px 4px 4px rgb(214, 199,  
188) }
```


Background

The CSS property to change the background color of an element to Yxy 58.7738, 0.3329, 0.3419 is called "background". The background property can be set on classes, ids or directly on the HTML element.

```
.background, #background, body{  
background: rgb(214, 199, 188) }
```

If only the background color should be changed can be used:

```
.background{ background-color: rgb(214,  
199, 188) }
```

This example shows the color as background, it is applied via the CSS property "background".

To optimize and compress your CSS code, you can use our [online CSS compressor and optimizer](#) based on csstidy. If you want to create a linear or radial gradient as background or border, check our [CSS Gradient Generator](#).

Hey! You found this booklet interesting? Support Converting Colors with the new Membership Option!

The pro membership hides all ads, plus gives you double the colors in the color bucket, and more awesome pro features!

[Learn more, Memberships starting at \\$2.50/m!](#)

**Follow me
on Twitter!**

@ConvertingColor