

# Converting Colors

$Yxy(58.7827, 0.3488, 0.3474)$

Have a look what the booklet for  
Yxy(58.7827, 0.3488, 0.3474)  
contains.

<b>Yxy(58.7827, 0.3488, 0.3474)</b> .....	3
<b>Conversions</b> .....	4
<b>Details</b> .....	6
<b>Harmonies</b> .....	12
<b>Previews</b> .....	24
<b>Color Blindness Simulation</b> .....	27
<b>CSS Examples</b> .....	30

# Color

**Yxy(58.7827, 0.3488, 0.3474)**

# Conversions

## Conversions Part 1

Format	Color
Hex	E1C4B4
RGB	225, 196, 180
RGB Percent	88%, 77%, 71%
CMY	0.1178, 0.2313, 0.2942
CMYK	0.00, 0.13, 0.20, 0.12
HSL	21°, 43%, 79%
HSV	21°, 20%, 88%
XYZ	59.0196, 58.7827, 51.4053
YIQ	202.8470, 22.4200, 1.1720

# Conversions

## Conversions Part 2

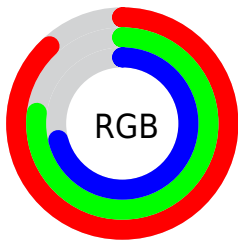
<b>Format</b>	<b>Color</b>
<b>R<sub>YB</sub></b>	225, 205, 180
Decimal	14795956
CIE <sub>Lab</sub>	81.17, 7.72, 11.81
CIE <sub>LCh</sub>	81, 14.108, 56.804
Yxy	58.7827, 0.3488, 0.3474
Android (android.graphics.Color)	4292986036 (0xFFE1C4B4)
YUV	202.8470, -11.2636, 19.4282
Hunter-Lab	76.6699, 3.2350, 13.9164

# Details

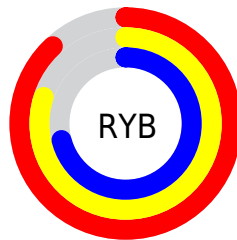
The Yxy color **58.7827, 0.3488, 0.3474** is a light color, and the websafe version is hex **FFCCCC**. A complement of this color would be **60.7005, 0.2817, 0.3098**, and the grayscale version is **59.6801, 0.3127, 0.3290**.

A 20% lighter version of the original color is **97.5667, 0.3240, 0.3454**, and **29.3133, 0.3584, 0.3517** is the 20% darker color. If you saturate the color by 10%, you get **51.7224, 0.3716, 0.3572**, and if you desaturate by 10%, it is **66.6272, 0.3293, 0.3379**.

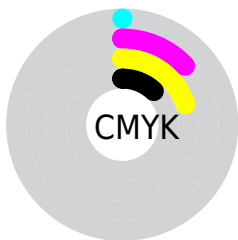
# Distribution



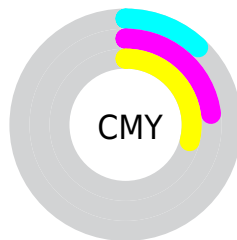
- Red (88%)
- Green (77%)
- Blue (71%)



- Red (88%)
- Yellow (80%)
- Blue (71%)



- Cyan (0%)
- Magenta (13%)
- Yellow (20%)
- Black (12%)



- Cyan (12%)
- Magenta (23%)
- Yellow (29%)

# Brightness & Saturation Gradients

These gradients show how the Yxy color 58.7827, 0.3488, 0.3474 changes by changing the brightness by 10 percent. The first figure shows a shift by +10% for each color and the second figure -10%.


Similar to the brightness gradients but the following saturation gradients show a change of the Yxy color 58.7827, 0.3488, 0.3474 by changing the saturation by 10% instead.





 58.7827, 0.3488,  
0.3474

 58.7827, 0.3488,  
0.3474


420.0962, 0.3313,  
0.3388

 42.4382, 0.3530,  
0.3494


 103.0618, 0.3426,  
0.3444

 29.4446, 0.3583,  
0.3518


131.7652, 0.3402,  
0.3432

 19.4174, 0.3651,  
0.3550


165.3570, 0.3382,  
0.3422

 11.9723, 0.3744,  
0.3590

204.2216, 0.3365,  
0.3414

 6.7248, 0.3875,  
0.3645

248.7434, 0.3349,  
0.3406

 3.2906, 0.4076,  
0.3723

299.3069, 0.3336,

 1.2853, 0.4502,

0.3399

0.3911

356.2963, 0.3324,  
0.3393

0.1297, 0.7062,  
0.2938

0.0000, 0.0000,  
0.0000

58.7827, 0.3488,  
0.3474

58.7827, 0.3488,  
0.3474

51.7224, 0.3716,  
0.3572

66.6272, 0.3293,  
0.3379

45.4135, 0.3979,  
0.3670

75.2717, 0.3127,  
0.3290

39.8322, 0.4278,  
0.3760

84.7415, 0.2986,  
0.3207

34.9507, 0.4607,  
0.3835

94.0564, 0.2946,  
0.3279

■ 30.7388, 0.4952,  
0.3880

■ 94.7419, 0.2946,  
0.3289

■ 27.1641, 0.5290,  
0.3884

■ 24.1906, 0.5592,  
0.3837

■ 21.7707, 0.5838,  
0.3746

■ 21.7697, 0.5838,  
0.3746

# Harmonies

## Analogous

The Analogous color harmony consists of three colors that are next to each other on the color wheel.



58.7827, 0.3453, 0.3324



58.7827, 0.3488, 0.3474



58.7827, 0.3423, 0.3581

# Triad

The Triadic color harmony groups three colors that are evenly spaced from another and form a triangle on the color wheel.



58.7827, 0.3488, 0.3474



58.7827, 0.2926, 0.3411



58.7827, 0.2971, 0.2987

# Complementary

The Complementary color scheme is a pair of colors which are on the opposite of each other on the color wheel.



58.7827, 0.3488, 0.3474



60.7005, 0.2817, 0.3098

# Split Complementary

Split-complementary colors differ from the complementary color scheme. The scheme consists of three colors, the original color and two neighbors of the complement color.



58.7827, 0.2836, 0.3001



58.7827, 0.3488, 0.3474



58.7827, 0.2811, 0.3242

# Square

The Square scheme is like the rectangle color scheme, but the four colors are evenly spaced on the color wheel.



58.7827, 0.3488, 0.3474



58.7827, 0.3096, 0.3549



58.7827, 0.2779, 0.3092



58.7827, 0.3150, 0.3049



# Rectangle

The Rectangle color scheme consists of four colors that form a rectangle on the color wheel.



58.7827, 0.3488, 0.3474



58.7827, 0.3333, 0.3611



58.7827, 0.2779, 0.3092



58.7827, 0.2919, 0.2983

# Sweetspot

The Sweet Spot groups the original color and five complimentary colors.



58.7854, 0.3488, 0.3474



92.9321, 0.3224, 0.3343



53.2516, 0.3276, 0.2962



19.7317, 0.3235, 0.3349



0.0000, 0.0000, 0.0000



21.4041, 0.3127, 0.3290



# Same Dimension

The Same Dimension uses a secret algorithm to generate beautiful new colors.



58.7854, 0.3488, 0.3474



74.0633, 0.3579, 0.3515



69.5520, 0.3441, 0.3716



14.4962, 0.3283, 0.3374



12.7498, 0.5810, 0.3769



1.0488, 0.5515, 0.4003

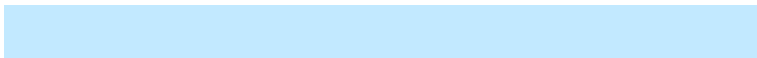


# Inverse Universe

The Inverse Universe completely reimagines the original color for something new.



60.7005, 0.2817, 0.3098



77.0426, 0.2752, 0.3054



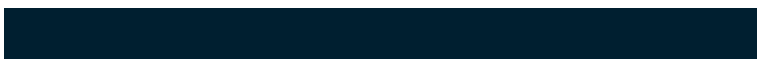
50.5615, 0.2800, 0.2825



14.7071, 0.2982, 0.3204



14.9914, 0.1912, 0.2083

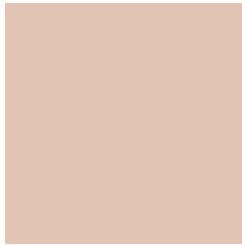


1.2063, 0.1970, 0.2290



# Previews

## White Background



This preview shows how the Yxy color 58.7827, 0.3488, 0.3474 looks on a white background.

## Color Contrast Check

Large Text (above 18pt) WCAG AA × Fail

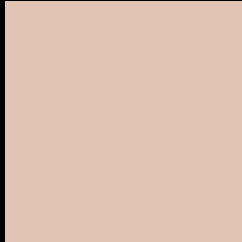
Any Text WCAG AA × Fail

Large Text (above 18pt) WCAG AAA × Fail

Any Text WCAG AAA × Fail



# Black Background



This preview shows how the Yxy color 58.7827, 0.3488, 0.3474 looks on a black background.

## Color Contrast Check

Large Text (above 18pt) WCAG AA ✓ Pass

Any Text WCAG AA ✓ Pass

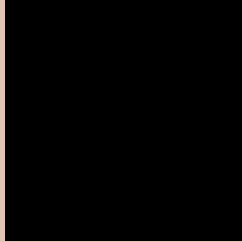
Large Text (above 18pt) WCAG AAA ✓ Pass

Any Text WCAG AAA ✓ Pass

If you want to check with other color combinations, try the [Color Contrast Checker](#).

**Yxy 58.7827, 0.3488, 0.3474**

## Background



This preview shows how black text looks on a background with the Yxy color 58.7827, 0.3488, 0.3474.



This preview shows how white text looks on a background with the Yxy color 58.7827, 0.3488, 0.3474.

# Color Blindness Simulation

Color vision deficiency is a very complex topic, and I could not describe the different causes any better than Wikipedia does, so if you want to learn more, you should check out their [article about color blindness](#).

## Dichromacy



### Original Color

58.7827, 0.3488, 0.3474

### Protanopia

58.8938, 0.3332, 0.3503

### Deuteranopia

58.5369, 0.3526, 0.3449



## Tritanopia

58.6982, 0.3305, 0.3124

# Trichromacy



## Original Color

58.7827, 0.3488, 0.3474

## Protanomaly

58.6713, 0.3383, 0.3489

## Deuteranomaly

58.8195, 0.3516, 0.3461

## Tritanomaly

58.5020, 0.3375, 0.3246

# Monochromacy



## Original Color

58.7827, 0.3488, 0.3474

## Achromatopsia

59.7202, 0.3127, 0.3290

## Achromatomaly

59.0976, 0.3251, 0.3349

# CSS Examples

## Text

The CSS property to change the color of the text to Yxy 58.7827, 0.3488, 0.3474 is called "color". The color property can be set on classes, ids or directly on the HTML element.

This example shows how text in the color `rgb(225, 196, 180)` looks like.

```
.text, #text, p{  
    color:rgb(225, 196, 180)  
}
```

If you want to add a text shadow in that color use the text-shadow property, you can generate a text shadow directly with our [CSS Text Shadow Generator](#).

Here you see how black text with a 4 pixel rgb(225, 196, 180) colored shadow looks like.

```
.shadow{ text-shadow: 4px 4px 2px rgb(225, 196, 180) }
```

## Border

The CSS property to change the border of an element to Yxy 58.7827, 0.3488, 0.3474 is called "border". The border property can be set on classes, ids or directly on the HTML element.

This example shows the color as border, it can be applied via the CSS property "border" or "border-color".

```
.border, #border, table{ border:4px solid rgb(225, 196, 180) }
```

If only the border color should be changed use the property border-color.

```
.border{ border-color:rgb(225, 196, 180) }
```

If you want to add a box shadow in that color use:

Here you see how a box with a 4 pixel rgb(225, 196, 180) colored shadow looks like.

```
.boxshadow{ -moz-box-shadow:4px 4px 4px  
4px rgb(225, 196, 180); -webkit-box-  
shadow:4px 4px 4px 4px rgb(225, 196, 180);  
box-shadow:4px 4px 4px 4px rgb(225, 196,  
180) }
```



# Background

The CSS property to change the background color of an element to Yxy 58.7827, 0.3488, 0.3474 is called "background". The background property can be set on classes, ids or directly on the HTML element.

```
.background, #background, body{  
background: rgb(225, 196, 180) }
```

If only the background color should be changed can be used:

```
.background{ background-color: rgb(225,  
196, 180) }
```

This example shows the color as background, it is applied via the CSS property "background".

To optimize and compress your CSS code, you can use our [online CSS compressor and optimizer](#) based on csstidy. If you want to create a linear or radial gradient as background or border, check our [CSS Gradient Generator](#).

Hey! You found this booklet interesting? Support Converting Colors with the new Membership Option!

The pro membership hides all ads, plus gives you double the colors in the color bucket, and more awesome pro features!

**[Learn more, Memberships starting at \\$2.50/m!](#)**

**Follow me  
on Twitter!**

@ConvertingColor