

# Converting Colors

Yxy(58.8610, 0.3209, 0.3142)

Have a look what the booklet for  
Yxy(58.8610, 0.3209, 0.3142)  
contains.

<b>Yxy(58.9887, 0.3205, 0.3143)</b> .....	3
<b>Conversions</b> .....	4
<b>Details</b> .....	6
<b>Harmonies</b> .....	12
<b>Previews</b> .....	24
<b>Color Blindness Simulation</b> .....	27
<b>CSS Examples</b> .....	30

# Color

**Yxy(58.9887, 0.3205, 0.3143)**

# Conversions

## Conversions Part 1

Format	Color
Hex	DAC4D1
RGB	218, 196, 209
RGB Percent	85%, 77%, 82%
CMY	0.1453, 0.2313, 0.1804
CMYK	0.00, 0.10, 0.04, 0.15
HSL	324°, 23%, 81%
HSV	324°, 10%, 85%
XYZ	60.1523, 58.9887, 68.5418
YIQ	204.0600, 8.9390, 8.7070

# Conversions

## Conversions Part 2

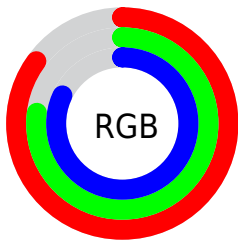
<b>Format</b>	<b>Color</b>
R <sub>Y</sub> B	218, 196, 209
Decimal	14337233
CIE Lab	81.29, 9.95, -3.67
CIE LCh	81, 10.604, 339.731
Yxy	58.9887, 0.3205, 0.3143
Android (android.graphics.Color)	4292527313 (0xFFDAC4D1)
YUV	204.0600, 2.4354, 12.2254
Hunter-Lab	76.8041, 5.3925, 0.8511

# Details

The Yxy color **58.9887, 0.3205, 0.3143** is a light color, and the websafe version is hex **CCCCCC**. A complement of this color would be **66.2639, 0.3056, 0.3442**, and the grayscale version is **60.4022, 0.3127, 0.3290**.

A 20% lighter version of the original color is **98.7306, 0.3128, 0.3271**, and **29.4991, 0.3221, 0.3096** is the 20% darker color. If you saturate the color by 10%, you get **49.4331, 0.3297, 0.2990**, and if you desaturate by 10%, it is **70.0023, 0.3128, 0.3289**.

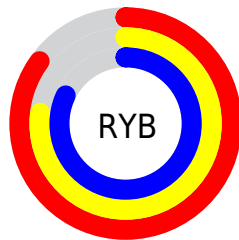
# Distribution



Red (85%)

Green (77%)

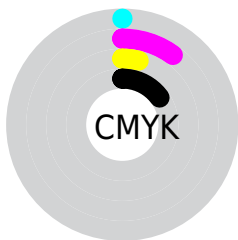
Blue (82%)



Red (85%)

Yellow (77%)

Blue (82%)

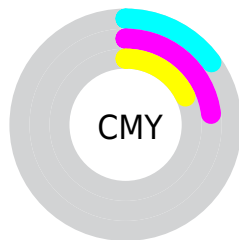


Cyan (0%)

Magenta (10%)

Yellow (4%)

Black (15%)



Cyan (15%)

Magenta (23%)


Yellow (18%)

# Brightness & Saturation Gradients

These gradients show how the Yxy color 58.9887, 0.3205, 0.3143 changes by changing the brightness by 10 percent. The first figure shows a shift by +10% for each color and the second figure -10%.

Similar to the brightness gradients but the following saturation gradients show a change of the Yxy color 58.9887, 0.3205, 0.3143 by changing the saturation by 10% instead.



 58.9887, 0.3205,  
0.3143

 58.9887, 0.3205,  
0.3143


420.8600, 0.3168,  
0.3213

 42.6040, 0.3214,  
0.3127

 103.3612, 0.3192,  
0.3168

 29.5745, 0.3225,  
0.3106

132.1179, 0.3187,  
0.3177

 19.5159, 0.3239,  
0.3080


165.7673, 0.3183,  
0.3185

 12.0436, 0.3257,  
0.3044

204.6939, 0.3179,  
0.3192

 6.7734, 0.3284,  
0.2995

249.2821, 0.3176,  
0.3198

 3.3208, 0.3323,  
0.2920

299.9163, 0.3173,

 1.3014, 0.3390,

0.3204

0.2796

356.9808, 0.3170,  
0.3209

0.1423, 0.4056,  
0.1527

0.0000, 0.0000,  
0.0000

58.9887, 0.3205,  
0.3143

58.9887, 0.3205,  
0.3143

49.4331, 0.3297,  
0.2990

70.0023, 0.3128,  
0.3289

41.2662, 0.3407,  
0.2833

82.5242, 0.3063,  
0.3426

34.4243, 0.3535,  
0.2678

92.4558, 0.3010,  
0.3489

28.8358, 0.3682,  
0.2532

92.9846, 0.2961,  
0.3396

■ 24.4224, 0.3848,  
0.2405

■ 93.5394, 0.2914,  
0.3305

■ 21.0967, 0.4028,  
0.2310

■ 93.6384, 0.2905,  
0.3289

■ 18.7590, 0.4217,  
0.2258

■ 17.2910, 0.4407,  
0.2257

■ 16.4850, 0.4591,  
0.2303

# Harmonies

## Analogous

The Analogous color harmony consists of three colors that are next to each other on the color wheel.



58.9887, 0.3066, 0.3074



58.9887, 0.3205, 0.3143



58.9887, 0.3325, 0.3249

# Triad

The Triadic color harmony groups three colors that are evenly spaced from another and form a triangle on the color wheel.



58.9887, 0.3205, 0.3143



58.9887, 0.3309, 0.3526



58.9887, 0.2870, 0.3203

# Complementary

The Complementary color scheme is a pair of colors which are on the opposite of each other on the color wheel.



58.9887, 0.3205, 0.3143



66.2639, 0.3056, 0.3442

# Split Complementary

Split-complementary colors differ from the complementary color scheme. The scheme consists of three colors, the original color and two neighbors of the complement color.



58.9887, 0.2932, 0.3327



58.9887, 0.3205, 0.3143



58.9887, 0.3184, 0.3518

# Square

The Square scheme is like the rectangle color scheme, but the four colors are evenly spaced on the color wheel.



58.9887, 0.3205, 0.3143



58.9887, 0.3385, 0.3470



58.9887, 0.3046, 0.3444



58.9887, 0.2875, 0.3106



# Rectangle

The Rectangle color scheme consists of four colors that form a rectangle on the color wheel.



58.9887, 0.3205, 0.3143



58.9887, 0.3377, 0.3329



58.9887, 0.3046, 0.3444



58.9887, 0.2884, 0.3243

# Sweetspot

The Sweet Spot groups the original color and five complimentary colors.



58.9913, 0.3205, 0.3143



95.0165, 0.3149, 0.3247



57.4984, 0.3037, 0.3036



20.0594, 0.3155, 0.3235



0.0000, 0.0000, 0.0000



21.4041, 0.3127, 0.3290



# Same Dimension

The Same Dimension uses a secret algorithm to generate beautiful new colors.



58.9913, 0.3205, 0.3143



81.2286, 0.3223, 0.3112



58.4745, 0.3287, 0.3265



13.1803, 0.3200, 0.3152



9.9027, 0.4565, 0.2288



0.6585, 0.4284, 0.2134



# Inverse Universe

The Inverse Universe completely reimagines the original color for something new.



58.9913, 0.3205, 0.3143



81.2286, 0.3223, 0.3112



66.8033, 0.2987, 0.3315



13.1803, 0.3200, 0.3152



9.9027, 0.4565, 0.2288



0.6585, 0.4284, 0.2134



# Previews

## White Background



This preview shows how the Yxy color 58.9887, 0.3205, 0.3143 looks on a white background.

## Color Contrast Check

Large Text (above 18pt) WCAG AA × Fail

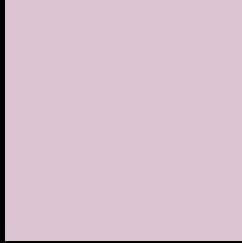
Any Text WCAG AA × Fail

Large Text (above 18pt) WCAG AAA × Fail

Any Text WCAG AAA × Fail



# Black Background



This preview shows how the Yxy color 58.9887, 0.3205, 0.3143 looks on a black background.

## Color Contrast Check

Large Text (above 18pt) WCAG AA ✓ Pass

Any Text WCAG AA ✓ Pass

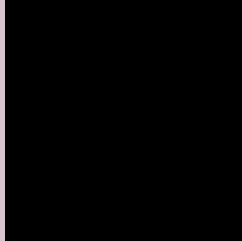
Large Text (above 18pt) WCAG AAA ✓ Pass

Any Text WCAG AAA ✓ Pass

If you want to check with other color combinations, try the [Color Contrast Checker](#).

**Yxy 58.9887, 0.3205, 0.3143**

## **Background**



This preview shows how black text looks on a background with the Yxy color 58.9887, 0.3205, 0.3143.



This preview shows how white text looks on a background with the Yxy color 58.9887, 0.3205, 0.3143.

# Color Blindness Simulation

Color vision deficiency is a very complex topic, and I could not describe the different causes any better than Wikipedia does, so if you want to learn more, you should check out their [article about color blindness](#).

## Dichromacy



### Original Color

58.9887, 0.3205, 0.3143

### Protanopia

59.2233, 0.3064, 0.3162

### Deuteranopia

58.9887, 0.3205, 0.3143



## Tritanopia

59.0884, 0.3190, 0.3121

# Trichromacy



## Original Color

58.9887, 0.3205, 0.3143

## Protanomaly

58.9599, 0.3110, 0.3151

## Deuteranomaly

58.9887, 0.3205, 0.3143

## Tritanomaly

59.0384, 0.3198, 0.3132

# Monochromacy



## Original Color

58.9887, 0.3205, 0.3143

## Achromatopsia

60.3827, 0.3127, 0.3290

## Achromatomaly

59.7848, 0.3153, 0.3232

# CSS Examples

## Text

The CSS property to change the color of the text to Yxy 58.9887, 0.3205, 0.3143 is called "color". The color property can be set on classes, ids or directly on the HTML element.

This example shows how text in the color `rgb(218, 196, 209)` looks like.

```
.text, #text, p{  
    color:rgb(218, 196, 209)  
}
```

If you want to add a text shadow in that color use the text-shadow property, you can generate a text shadow directly with our [CSS Text Shadow Generator](#).

Here you see how black text with a 4 pixel rgb(218, 196, 209) colored shadow looks like.

```
.shadow{ text-shadow: 4px 4px 2px rgb(218, 196, 209) }
```

## Border

The CSS property to change the border of an element to Yxy 58.9887, 0.3205, 0.3143 is called "border". The border property can be set on classes, ids or directly on the HTML element.

This example shows the color as border, it can be applied via the CSS property "border" or "border-color".

```
.border, #border, table{ border:4px solid rgb(218, 196, 209) }
```

If only the border color should be changed use the property `border-color`.

```
.border{ border-color:rgb(218, 196, 209) }
```

If you want to add a box shadow in that color use:

Here you see how a box with a 4 pixel `rgb(218, 196, 209)` colored shadow looks like.

```
.boxshadow{ -moz-box-shadow:4px 4px 4px  
4px rgb(218, 196, 209); -webkit-box-  
shadow:4px 4px 4px 4px rgb(218, 196, 209);  
box-shadow:4px 4px 4px 4px rgb(218, 196,  
209) }
```



# Background

The CSS property to change the background color of an element to Yxy 58.9887, 0.3205, 0.3143 is called "background". The background property can be set on classes, ids or directly on the HTML element.

```
.background, #background, body{  
background: rgb(218, 196, 209) }
```

If only the background color should be changed can be used:

```
.background{ background-color: rgb(218,  
196, 209) }
```

This example shows the color as background, it is applied via the CSS property "background".

To optimize and compress your CSS code, you can use our [online CSS compressor and optimizer](#) based on csstidy. If you want to create a linear or radial gradient as background or border, check our [CSS Gradient Generator](#).

Hey! You found this booklet interesting? Support Converting Colors with the new Membership Option!

The pro membership hides all ads, plus gives you double the colors in the color bucket, and more awesome pro features!

**[Learn more, Memberships starting at \\$2.50/m!](#)**

**Follow me  
on Twitter!**

@ConvertingColor