

Converting Colors

$Yxy(59.0464, 0.3532, 0.3574)$

Have a look what the booklet for
Yxy(59.0464, 0.3532, 0.3574)
contains.

Yxy(59.2526, 0.3531, 0.3578)	3
Conversions	4
Details	6
Harmonies	12
Previews	24
Color Blindness Simulation	27
CSS Examples	30

Color

Yxy(59.2526, 0.3531, 0.3578)

Conversions

Conversions Part 1

Format	Color
Hex	E0C6AD
RGB	224, 198, 173
RGB Percent	88%, 78%, 68%
CMY	0.1216, 0.2235, 0.3217
CMYK	0.00, 0.12, 0.23, 0.12
HSL	29°, 45%, 78%
HSV	29°, 23%, 88%
XYZ	58.4743, 59.2526, 47.8757
YIQ	202.9240, 23.5210, -2.2630

Conversions

Conversions Part 2

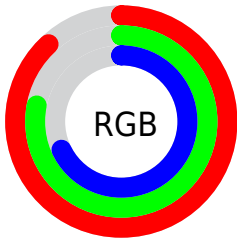
Format	Color
RYB	224, 222, 173
Decimal	14730925
CIELab	81.43, 5.29, 15.90
CIELCh	81, 16.758, 71.587
Yxy	59.2526, 0.3531, 0.3578
Android (android.graphics.Color)	4292921005 (0xFFE0C6AD)
YUV	202.9240, -14.7525, 18.4837
Hunter-Lab	76.9757, 0.8893, 17.0071

Details

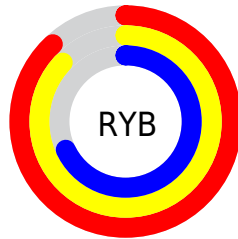
The Yxy color **59.2526, 0.3531, 0.3578** is a light color, and the websafe version is hex **FFCCCC**. A complement of this color would be **55.0914, 0.2767, 0.2984**, and the grayscale version is **59.7542, 0.3127, 0.3290**.

A 20% lighter version of the original color is **98.3814, 0.3286, 0.3552**, and **29.6518, 0.3630, 0.3639** is the 20% darker color. If you saturate the color by 10%, you get **53.4388, 0.3749, 0.3711**, and if you desaturate by 10%, it is **65.6100, 0.3338, 0.3448**.

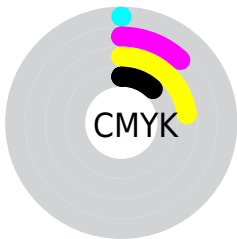
Distribution



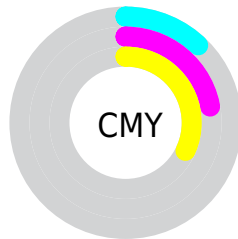
- Red (88%)
- Green (78%)
- Blue (68%)



- Red (88%)
- Yellow (87%)
- Blue (68%)



- Cyan (0%)
- Magenta (12%)
- Yellow (23%)
- Black (12%)





- Cyan (12%)
- Magenta (22%)
- Yellow (32%)

Brightness & Saturation Gradients


These gradients show how the Yxy color 59.2526, 0.3531, 0.3578 changes by changing the brightness by 10 percent. The first figure shows a shift by +10% for each color and the second figure -10%.


Similar to the brightness gradients but the following saturation gradients show a change of the Yxy color 59.2526, 0.3531, 0.3578 by changing the saturation by 10% instead.


 59.2526, 0.3531,
0.3578

 59.2526, 0.3531,
0.3578


421.8374, 0.3336,
0.3442

 42.8165, 0.3577,
0.3610


 103.7447, 0.3462,
0.3530

 29.7412, 0.3636,
0.3649


132.5695, 0.3436,
0.3512

 19.6422, 0.3711,
0.3699


166.2926, 0.3413,
0.3496

 12.1352, 0.3812,
0.3764

205.2985, 0.3393,
0.3483

 6.8358, 0.3954,
0.3853

249.9715, 0.3376,
0.3471

 3.3596, 0.4167,
0.3979

300.6961, 0.3362,

 1.3223, 0.4743,

0.3460

0.4376

357.8566, 0.3348,
0.3451

0.1583, 0.6385,
0.3615

0.0000, 0.0000,
0.0000

59.2526, 0.3531,
0.3578

59.2526, 0.3531,
0.3578

53.4388, 0.3749,
0.3711

65.6100, 0.3338,
0.3448

48.1447, 0.3992,
0.3842

72.5181, 0.3170,
0.3323

43.3562, 0.4256,
0.3963

79.9939, 0.3023,
0.3207

39.0555, 0.4535,
0.4062

87.5538, 0.2938,
0.3174

■ 35.2233, 0.4815,
0.4126

■ 94.5867, 0.2940,
0.3289

■ 31.8384, 0.5079,
0.4144

■ 28.8768, 0.5309,
0.4107

■ 26.9794, 0.5453,
0.4052

Harmonies

Analogous

The Analogous color harmony consists of three colors that are next to each other on the color wheel.



59.2526, 0.3550, 0.3419



59.2526, 0.3531, 0.3578



59.2526, 0.3402, 0.3666

Triad

The Triadic color harmony groups three colors that are evenly spaced from another and form a triangle on the color wheel.



59.2526, 0.3531, 0.3578



59.2526, 0.2812, 0.3335



59.2526, 0.3042, 0.2959

Complementary

The Complementary color scheme is a pair of colors which are on the opposite of each other on the color wheel.



59.2526, 0.3531, 0.3578



55.0914, 0.2767, 0.2984

Split Complementary

Split-complementary colors differ from the complementary color scheme. The scheme consists of three colors, the original color and two neighbors of the complement color.



59.2526, 0.2852, 0.2929



59.2526, 0.3531, 0.3578



59.2526, 0.2723, 0.3137

Square

The Square scheme is like the rectangle color scheme, but the four colors are evenly spaced on the color wheel.



59.2526, 0.3531, 0.3578



59.2526, 0.2985, 0.3527



59.2526, 0.2737, 0.2991



59.2526, 0.3262, 0.3070

Rectangle

The Rectangle color scheme consists of four colors that form a rectangle on the color wheel.



59.2526, 0.3531, 0.3578



59.2526, 0.3272, 0.3668



59.2526, 0.2737, 0.2991



59.2526, 0.2973, 0.2939

Sweetspot

The Sweet Spot groups the original color and five complimentary colors.



59.2553, 0.3531, 0.3578



93.2392, 0.3239, 0.3375



49.8627, 0.3359, 0.2989



19.8360, 0.3249, 0.3383



0.0000, 0.0000, 0.0000



21.4041, 0.3127, 0.3290

Same Dimension

The Same Dimension uses a secret algorithm to generate beautiful new colors.



59.2553, 0.3531, 0.3578



75.9630, 0.3624, 0.3637



71.7163, 0.3472, 0.3848



14.8055, 0.3280, 0.3405



15.9336, 0.5429, 0.4071



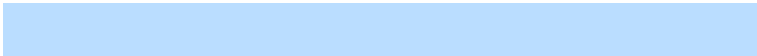
1.2833, 0.5189, 0.4262

Inverse Universe

The Inverse Universe completely reimagines the original color for something new.



55.0914, 0.2767, 0.2984



69.5052, 0.2695, 0.2916



44.4668, 0.2743, 0.2664



14.3917, 0.2981, 0.3172



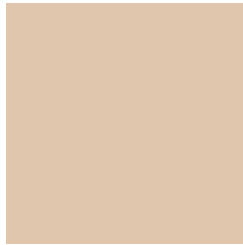
10.3801, 0.1782, 0.1615



0.8986, 0.1858, 0.1890

Previews

White Background



This preview shows how the Yxy color 59.2526, 0.3531, 0.3578 looks on a white background.

Color Contrast Check

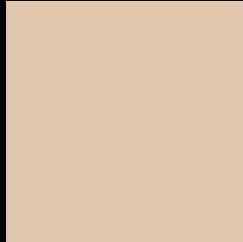
Large Text (above 18pt) WCAG AA × Fail

Any Text WCAG AA × Fail

Large Text (above 18pt) WCAG AAA × Fail

Any Text WCAG AAA × Fail

Black Background



This preview shows how the Yxy color 59.2526, 0.3531, 0.3578 looks on a black background.

Color Contrast Check

Large Text (above 18pt) WCAG AA ✓ Pass

Any Text WCAG AA ✓ Pass

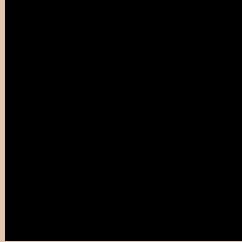
Large Text (above 18pt) WCAG AAA ✓ Pass

Any Text WCAG AAA ✓ Pass

If you want to check with other color combinations, try the [Color Contrast Checker](#).

Yxy 59.2526, 0.3531, 0.3578

Background



This preview shows how black text looks on a background with the Yxy color 59.2526, 0.3531, 0.3578.



This preview shows how white text looks on a background with the Yxy color 59.2526, 0.3531, 0.3578.

Color Blindness Simulation

Color vision deficiency is a very complex topic, and I could not describe the different causes any better than Wikipedia does, so if you want to learn more, you should check out their [article about color blindness](#).

Dichromacy



Original Color

59.2526, 0.3531, 0.3578

Protanopia

59.3333, 0.3407, 0.3609

Deuteranopia

59.2420, 0.3598, 0.3527



Tritanopia

59.1880, 0.3296, 0.3124

Trichromacy



Original Color

59.2526, 0.3531, 0.3578

Protanomaly

59.4282, 0.3450, 0.3606

Deuteranomaly

59.1939, 0.3570, 0.3540

Tritanomaly

59.3012, 0.3387, 0.3291

Monochromacy



Original Color

59.2526, 0.3531, 0.3578

Achromatopsia

59.7202, 0.3127, 0.3290

Achromatomaly

59.4279, 0.3272, 0.3396

CSS Examples

Text

The CSS property to change the color of the text to Yxy 59.2526, 0.3531, 0.3578 is called "color". The color property can be set on classes, ids or directly on the HTML element.

This example shows how text in the color `rgb(224, 198, 173)` looks like.

```
.text, #text, p{  
    color:rgb(224, 198, 173)  
}
```

If you want to add a text shadow in that color use the text-shadow property, you can generate a text shadow directly with our [CSS Text Shadow Generator](#).

Here you see how black text with a 4 pixel rgb(224, 198, 173) colored shadow looks like.

```
.shadow{ text-shadow: 4px 4px 2px rgb(224, 198, 173) }
```

Border

The CSS property to change the border of an element to Yxy 59.2526, 0.3531, 0.3578 is called "border". The border property can be set on classes, ids or directly on the HTML element.

This example shows the color as border, it can be applied via the CSS property "border" or "border-color".

```
.border, #border, table{ border:4px solid rgb(224, 198, 173) }
```

If only the border color should be changed use the property `border-color`.

```
.border{ border-color:rgb(224, 198, 173) }
```

If you want to add a box shadow in that color use:

Here you see how a box with a 4 pixel `rgb(224, 198, 173)` colored shadow looks like.

```
.boxshadow{ -moz-box-shadow:4px 4px 4px  
4px rgb(224, 198, 173); -webkit-box-  
shadow:4px 4px 4px 4px rgb(224, 198, 173);  
box-shadow:4px 4px 4px 4px rgb(224, 198,  
173) }
```


Background

The CSS property to change the background color of an element to Yxy 59.2526, 0.3531, 0.3578 is called "background". The background property can be set on classes, ids or directly on the HTML element.

```
.background, #background, body{  
background: rgb(224, 198, 173) }
```

If only the background color should be changed can be used:

```
.background{ background-color: rgb(224,  
198, 173) }
```

This example shows the color as background, it is applied via the CSS property "background".

To optimize and compress your CSS code, you can use our [online CSS compressor and optimizer](#) based on csstidy. If you want to create a linear or radial gradient as background or border, check our [CSS Gradient Generator](#).

Hey! You found this booklet interesting? Support Converting Colors with the new Membership Option!

The pro membership hides all ads, plus gives you double the colors in the color bucket, and more awesome pro features!

[Learn more, Memberships starting at \\$2.50/m!](#)

**Follow me
on Twitter!**

@ConvertingColor