

Converting Colors

Yxy(59.1840, 0.3997, 0.3650)

Have a look what the booklet for
Yxy(59.1840, 0.3997, 0.3650)
contains.

Yxy(59.1006, 0.3998, 0.3648)	3
<i>Conversions</i>	4
<i>Details</i>	6
<i>Harmonies</i>	12
<i>Previews</i>	24
<i>Color Blindness Simulation</i>	27
<i>CSS Examples</i>	30

Color

Yxy(59.1006, 0.3998, 0.3648)

Conversions

Conversions Part 1

Format	Color
Hex	FFBB99
RGB	255, 187, 153
RGB Percent	100%, 73%, 60%
CMY	0.0000, 0.2667, 0.3999
CMYK	0.00, 0.27, 0.40, 0.00
HSL	20°, 100%, 80%
HSV	20°, 40%, 100%
XYZ	64.7709, 59.1006, 38.1367
YIQ	203.4560, 51.4420, 3.8420

Conversions

Conversions Part 2

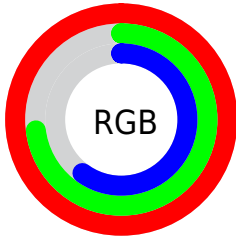
Format	Color
R _Y B	255, 204, 153
Decimal	16759705
CIE Lab	81.35, 20.40, 26.86
CIE LCh	81, 33.728, 52.784
Yxy	59.1006, 0.3998, 0.3648
Android (android.graphics.Color)	4294949785 (0xFFFFBB99)
YUV	203.4560, -24.8748, 45.2041
Hunter-Lab	76.8769, 15.8565, 24.4015

Details

The Yxy color **59.1006, 0.3998, 0.3648** is a light color, and the websafe version is hex **FFCC99**. A complement of this color would be **65.7204, 0.2513, 0.2894**, and the grayscale version is **60.1540, 0.3127, 0.3290**.

A 20% lighter version of the original color is **89.9153, 0.3426, 0.3638**, and **29.7453, 0.4213, 0.3720** is the 20% darker color. If you saturate the color by 10%, you get **51.5493, 0.4307, 0.3733**, and if you desaturate by 10%, it is **67.6783, 0.3726, 0.3556**.

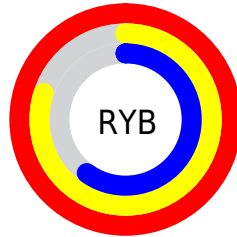
Distribution



Red (100%)

Green (73%)

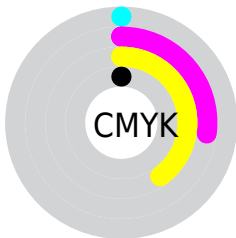
Blue (60%)



Red (100%)

Yellow (80%)

Blue (60%)

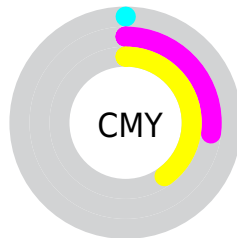


Cyan (0%)

Magenta (27%)

Yellow (40%)

Black (0%)



Cyan (0%)


Magenta (27%)


Yellow (40%)

Brightness & Saturation Gradients


These gradients show how the Yxy color 59.1006, 0.3998, 0.3648 changes by changing the brightness by 10 percent. The first figure shows a shift by +10% for each color and the second figure -10%.


Similar to the brightness gradients but the following saturation gradients show a change of the Yxy color 59.1006, 0.3998, 0.3648 by changing the saturation by 10% instead.

 59.1006, 0.3998,
0.3648

 59.1006, 0.3998,
0.3648


421.2746, 0.3577,
0.3492

 42.6941, 0.4098,
0.3680


 103.5239, 0.3849,
0.3597

 29.6452, 0.4222,
0.3717


 132.3094, 0.3792,
0.3576

 19.5694, 0.4381,
0.3760


165.9901, 0.3743,
0.3558

 12.0824, 0.4591,
0.3807

204.9504, 0.3701,
0.3541

 6.7999, 0.4877,
0.3855

249.5745, 0.3664,
0.3527

 3.3372, 0.5294,
0.3894

300.2470, 0.3632,

 1.3102, 0.6054,

0.3514

0.3946

357.3523, 0.3603,
0.3503

0.1491, 0.8110,
0.1890

0.0000, 0.0000,
0.0000

59.1006, 0.3998,
0.3648

59.1006, 0.3998,
0.3648

51.5493, 0.4307,
0.3733

67.6783, 0.3726,
0.3556

44.9952, 0.4648,
0.3801

77.3332, 0.3493,
0.3463

39.3900, 0.5007,
0.3840

88.0980, 0.3295,
0.3374

34.6854, 0.5358,
0.3837

100.0000, 0.3127,
0.3290

■ 30.8280, 0.5667,
0.3784

■ 27.7505, 0.5912,
0.3688

■ 27.7488, 0.5912,
0.3688

Harmonies

Analogous

The Analogous color harmony consists of three colors that are next to each other on the color wheel.



59.1006, 0.3885, 0.3298



59.1006, 0.3998, 0.3648



59.1006, 0.3859, 0.3940

Triad

The Triadic color harmony groups three colors that are evenly spaced from another and form a triangle on the color wheel.



59.1006, 0.3998, 0.3648



59.1006, 0.2694, 0.3637



59.1006, 0.2703, 0.2594

Complementary

The Complementary color scheme is a pair of colors which are on the opposite of each other on the color wheel.



59.1006, 0.3998, 0.3648



65.7204, 0.2513, 0.2894

Split Complementary

Split-complementary colors differ from the complementary color scheme. The scheme consists of three colors, the original color and two neighbors of the complement color.



59.1006, 0.2426, 0.2631



59.1006, 0.3998, 0.3648



59.1006, 0.2420, 0.3207

Square

The Square scheme is like the rectangle color scheme, but the four colors are evenly spaced on the color wheel.



59.1006, 0.3998, 0.3648



59.1006, 0.3096, 0.3972



59.1006, 0.2326, 0.2842



59.1006, 0.3110, 0.2717

Rectangle

The Rectangle color scheme consists of four colors that form a rectangle on the color wheel.



59.1006, 0.3998, 0.3648



59.1006, 0.3651, 0.4054



59.1006, 0.2326, 0.2842



59.1006, 0.2593, 0.2588

Sweetspot

The Sweet Spot groups the original color and five complimentary colors.



59.0966, 0.3998, 0.3648



85.8478, 0.3332, 0.3392



49.3593, 0.3452, 0.2585



18.0666, 0.3357, 0.3403



0.0000, 0.0000, 0.0000



21.4041, 0.3127, 0.3290

Same Dimension

The Same Dimension uses a secret algorithm to generate beautiful new colors.



59.0966, 0.3998, 0.3648



52.9736, 0.4242, 0.3717



83.7259, 0.3796, 0.4124



18.9756, 0.3286, 0.3370



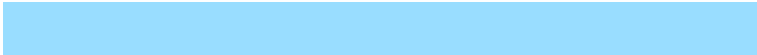
14.7431, 0.5882, 0.3711



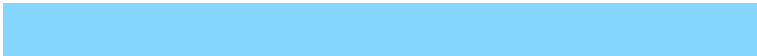
1.6267, 0.5663, 0.3886

Inverse Universe

The Inverse Universe completely reimagines the original color for something new.



65.7204, 0.2513, 0.2894



60.3811, 0.2400, 0.2800



43.3896, 0.2417, 0.2286



19.4020, 0.2980, 0.3209



19.0910, 0.1933, 0.2160



2.0599, 0.1973, 0.2304

Previews

White Background



This preview shows how the Yxy color 59.1006, 0.3998, 0.3648 looks on a white background.

Color Contrast Check

Large Text (above 18pt) WCAG AA × Fail

Any Text WCAG AA × Fail

Large Text (above 18pt) WCAG AAA × Fail

Any Text WCAG AAA × Fail

Black Background



This preview shows how the Yxy color 59.1006, 0.3998, 0.3648 looks on a black background.

Color Contrast Check

Large Text (above 18pt) WCAG AA ✓ Pass

Any Text WCAG AA ✓ Pass

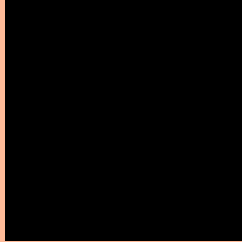
Large Text (above 18pt) WCAG AAA ✓ Pass

Any Text WCAG AAA ✓ Pass

If you want to check with other color combinations, try the [Color Contrast Checker](#).

Yxy 59.1006, 0.3998, 0.3648

Background



This preview shows how black text looks on a background with the Yxy color 59.1006, 0.3998, 0.3648.



This preview shows how white text looks on a background with the Yxy color 59.1006, 0.3998, 0.3648.

Color Blindness Simulation

Color vision deficiency is a very complex topic, and I could not describe the different causes any better than Wikipedia does, so if you want to learn more, you should check out their [article about color blindness](#).

Dichromacy



Original Color

59.1006, 0.3998, 0.3648

Protanopia

59.2262, 0.3546, 0.3785

Deuteranopia

59.2013, 0.3840, 0.3754



Tritanopia

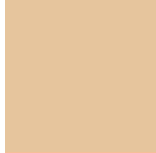
59.1125, 0.3638, 0.3156

Trichromacy



Original Color

59.1006, 0.3998, 0.3648



Protanomaly

59.1898, 0.3712, 0.3744



Deuteranomaly

58.9411, 0.3904, 0.3714



Tritanomaly

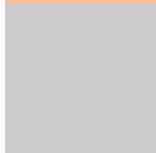
58.8363, 0.3775, 0.3334

Monochromacy



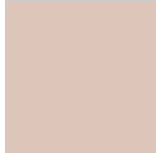
Original Color

59.1006, 0.3998, 0.3648



Achromatopsia

59.7202, 0.3127, 0.3290



Achromatomaly

58.9649, 0.3422, 0.3428

CSS Examples

Text

The CSS property to change the color of the text to Yxy 59.1006, 0.3998, 0.3648 is called "color". The color property can be set on classes, ids or directly on the HTML element.

This example shows how text in the color `rgb(255, 187, 153)` looks like.

```
.text, #text, p{  
    color:rgb(255, 187, 153)  
}
```

If you want to add a text shadow in that color use the text-shadow property, you can generate a text shadow directly with our [CSS Text Shadow Generator](#).

Here you see how black text with a 4 pixel rgb(255, 187, 153) colored shadow looks like.

```
.shadow{ text-shadow: 4px 4px 2px rgb(255, 187, 153) }
```

Border

The CSS property to change the border of an element to Yxy 59.1006, 0.3998, 0.3648 is called "border". The border property can be set on classes, ids or directly on the HTML element.

This example shows the color as border, it can be applied via the CSS property "border" or "border-color".

```
.border, #border, table{ border:4px solid rgb(255, 187, 153) }
```

If only the border color should be changed use the property `border-color`.

```
.border{ border-color:rgb(255, 187, 153) }
```

If you want to add a box shadow in that color use:

Here you see how a box with a 4 pixel `rgb(255, 187, 153)` colored shadow looks like.

```
.boxshadow{ -moz-box-shadow:4px 4px 4px  
4px rgb(255, 187, 153); -webkit-box-  
shadow:4px 4px 4px 4px rgb(255, 187, 153);  
box-shadow:4px 4px 4px 4px rgb(255, 187,  
153) }
```


Background

The CSS property to change the background color of an element to Yxy 59.1006, 0.3998, 0.3648 is called "background". The background property can be set on classes, ids or directly on the HTML element.

```
.background, #background, body{  
background: rgb(255, 187, 153) }
```

If only the background color should be changed can be used:

```
.background{ background-color: rgb(255,  
187, 153) }
```

This example shows the color as background, it is applied via the CSS property "background".

To optimize and compress your CSS code, you can use our [online CSS compressor and optimizer](#) based on csstidy. If you want to create a linear or radial gradient as background or border, check our [CSS Gradient Generator](#).

Hey! You found this booklet interesting? Support Converting Colors with the new Membership Option!

The pro membership hides all ads, plus gives you double the colors in the color bucket, and more awesome pro features!

[Learn more, Memberships starting at \\$2.50/m!](#)

**Follow me
on Twitter!**

@ConvertingColor