

Converting Colors

$Yxy(59.1892, 0.3212, 0.3176)$

Have a look what the booklet for
Yxy(59.1892, 0.3212, 0.3176)
contains.

Yxy(59.1892, 0.3212, 0.3176)	3
Conversions	4
Details	6
Harmonies	12
Previews	24
Color Blindness Simulation	27
CSS Examples	30

Color

Yxy(59.1892, 0.3212, 0.3176)

Conversions

Conversions Part 1

Format	Color
Hex	D9C5CF
RGB	217, 197, 207
RGB Percent	85%, 77%, 81%
CMY	0.1488, 0.2275, 0.1881
CMYK	0.00, 0.09, 0.05, 0.15
HSL	330°, 21%, 81%
HSV	330°, 9%, 85%
XYZ	59.8601, 59.1892, 67.3147
YIQ	204.1200, 8.7100, 7.3500

Conversions

Conversions Part 2

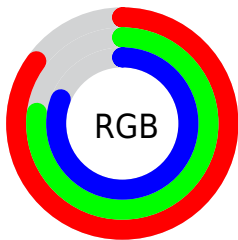
Format	Color
R_{YB}	217, 197, 207
Decimal	14271951
CIE _{Lab}	81.40, 8.78, -2.45
CIE _{LCh}	81, 9.113, 344.374
Yxy	59.1892, 0.3212, 0.3176
Android (android.graphics.Color)	4292462031 (0xFFD9C5CF)
YUV	204.1200, 1.4198, 11.2958
Hunter-Lab	76.9345, 4.2493, 1.9778

Details

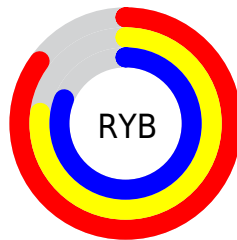
The Yxy color **59.1892, 0.3212, 0.3176** is a light color, and the websafe version is hex **CCCCCC**. A complement of this color would be **66.0331, 0.3050, 0.3407**, and the grayscale version is **60.4565, 0.3127, 0.3290**.

A 20% lighter version of the original color is **99.3636, 0.3128, 0.3281**, and **29.6262, 0.3230, 0.3140** is the 20% darker color. If you saturate the color by 10%, you get **49.5219, 0.3322, 0.3046**, and if you desaturate by 10%, it is **70.3174, 0.3121, 0.3299**.

Distribution



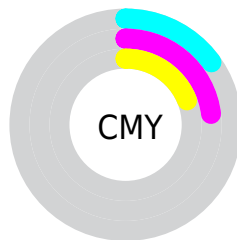
- Red (85%)
- Green (77%)
- Blue (81%)



- Red (85%)
- Yellow (77%)
- Blue (81%)



- Cyan (0%)
- Magenta (9%)
- Yellow (5%)
- Black (15%)



- Cyan (15%)
- Magenta (23%)
- Yellow (19%)

Brightness & Saturation Gradients

These gradients show how the Yxy color 59.1892, 0.3212, 0.3176 changes by changing the brightness by 10 percent. The first figure shows a shift by +10% for each color and the second figure -10%.

Similar to the brightness gradients but the following saturation gradients show a change of the Yxy color 59.1892, 0.3212, 0.3176 by changing the saturation by 10% instead.

■ 59.1892, 0.3212,
0.3176

■ 59.1892, 0.3212,
0.3176

421.6027, 0.3172,
0.3230

■ 42.7654, 0.3222,
0.3163

103.6526, 0.3198,
0.3195

■ 29.7011, 0.3234,
0.3147

132.4610, 0.3192,
0.3203

■ 19.6118, 0.3249,
0.3126

166.1665, 0.3188,
0.3209

■ 12.1132, 0.3270,
0.3099

205.1533, 0.3183,
0.3214

■ 6.8208, 0.3299,
0.3060

249.8060, 0.3180,
0.3219

■ 3.3503, 0.3344,
0.3001

300.5088, 0.3177,

■ 1.3172, 0.3420,

0.3223

0.2902

357.6463, 0.3174,
0.3227

0.1545, 0.4221,
0.1806

0.0000, 0.0000,
0.0000

59.1892, 0.3212,
0.3176

59.1892, 0.3212,
0.3176

49.5219, 0.3322,
0.3046

70.3174, 0.3121,
0.3299

41.2467, 0.3454,
0.2913

82.9564, 0.3046,
0.3414

34.3007, 0.3610,
0.2780

92.5483, 0.2983,
0.3449

28.6132, 0.3793,
0.2654

93.2113, 0.2925,
0.3336

■ 24.1068, 0.4002,
0.2546

■ 93.5017, 0.2900,
0.3289

■ 20.6953, 0.4233,
0.2468

■ 18.2811, 0.4478,
0.2431

■ 16.7483, 0.4726,
0.2447

■ 15.9083, 0.4964,
0.2513

Harmonies

Analogous

The Analogous color harmony consists of three colors that are next to each other on the color wheel.



59.1892, 0.3093, 0.3110



59.1892, 0.3212, 0.3176



59.1892, 0.3309, 0.3271

Triad

The Triadic color harmony groups three colors that are evenly spaced from another and form a triangle on the color wheel.



59.1892, 0.3212, 0.3176



59.1892, 0.3269, 0.3495



59.1892, 0.2903, 0.3201

Complementary

The Complementary color scheme is a pair of colors which are on the opposite of each other on the color wheel.



59.1892, 0.3212, 0.3176



66.0331, 0.3050, 0.3407

Split Complementary

Split-complementary colors differ from the complementary color scheme. The scheme consists of three colors, the original color and two neighbors of the complement color.



59.1892, 0.2948, 0.3306



59.1892, 0.3212, 0.3176



59.1892, 0.3158, 0.3478

Square

The Square scheme is like the rectangle color scheme, but the four colors are evenly spaced on the color wheel.



59.1892, 0.3212, 0.3176



59.1892, 0.3342, 0.3455



59.1892, 0.3041, 0.3408



59.1892, 0.2916, 0.3123

Rectangle

The Rectangle color scheme consists of four colors that form a rectangle on the color wheel.



59.1892, 0.3212, 0.3176



59.1892, 0.3348, 0.3340



59.1892, 0.3041, 0.3408



59.1892, 0.2911, 0.3234

Sweetspot

The Sweet Spot groups the original color and five complimentary colors.



59.1918, 0.3212, 0.3176



94.9719, 0.3153, 0.3253



58.2059, 0.3060, 0.3059



20.0474, 0.3161, 0.3244



0.0000, 0.0000, 0.0000



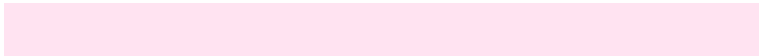
21.4041, 0.3127, 0.3290

Same Dimension

The Same Dimension uses a secret algorithm to generate beautiful new colors.



59.1918, 0.3212, 0.3176



82.5201, 0.3231, 0.3153



58.7161, 0.3288, 0.3290



13.1596, 0.3214, 0.3174



9.6130, 0.4950, 0.2500



0.6402, 0.4590, 0.2302

Inverse Universe

The Inverse Universe completely reimagines the original color for something new.



59.1918, 0.3212, 0.3176



82.5201, 0.3231, 0.3153



66.5401, 0.2985, 0.3290



13.1596, 0.3214, 0.3174



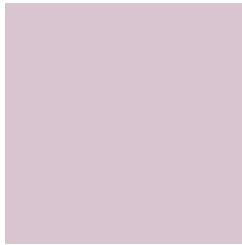
9.6130, 0.4950, 0.2500



0.6402, 0.4590, 0.2302

Previews

White Background



This preview shows how the Yxy color 59.1892, 0.3212, 0.3176 looks on a white background.

Color Contrast Check

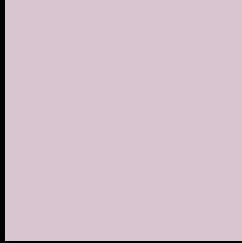
Large Text (above 18pt) WCAG AA × Fail

Any Text WCAG AA × Fail

Large Text (above 18pt) WCAG AAA × Fail

Any Text WCAG AAA × Fail

Black Background



This preview shows how the Yxy color 59.1892, 0.3212, 0.3176 looks on a black background.

Color Contrast Check

Large Text (above 18pt) WCAG AA ✓ Pass

Any Text WCAG AA ✓ Pass

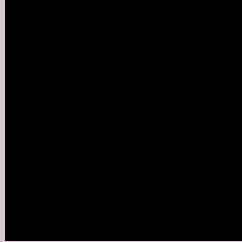
Large Text (above 18pt) WCAG AAA ✓ Pass

Any Text WCAG AAA ✓ Pass

If you want to check with other color combinations, try the [Color Contrast Checker](#).

Yxy 59.1892, 0.3212, 0.3176

Background



This preview shows how black text looks on a background with the Yxy color 59.1892, 0.3212, 0.3176.



This preview shows how white text looks on a background with the Yxy color 59.1892, 0.3212, 0.3176.

Color Blindness Simulation

Color vision deficiency is a very complex topic, and I could not describe the different causes any better than Wikipedia does, so if you want to learn more, you should check out their [article about color blindness](#).

Dichromacy



Original Color

59.1892, 0.3212, 0.3176

Protanopia

59.2141, 0.3093, 0.3197

Deuteranopia

59.2005, 0.3236, 0.3166



Tritanopia

59.1387, 0.3183, 0.3109

Trichromacy



Original Color

59.1892, 0.3212, 0.3176

Protanomaly

59.4179, 0.3139, 0.3198

Deuteranomaly

59.0449, 0.3228, 0.3166

Tritanomaly

59.0384, 0.3198, 0.3132

Monochromacy



Original Color

59.1892, 0.3212, 0.3176

Achromatopsia

60.3827, 0.3127, 0.3290

Achromatomaly

59.7364, 0.3160, 0.3244

CSS Examples

Text

The CSS property to change the color of the text to Yxy 59.1892, 0.3212, 0.3176 is called "color". The color property can be set on classes, ids or directly on the HTML element.

This example shows how text in the color `rgb(217, 197, 207)` looks like.

```
.text, #text, p{  
    color:rgb(217, 197, 207)  
}
```

If you want to add a text shadow in that color use the text-shadow property, you can generate a text shadow directly with our [CSS Text Shadow Generator](#).

Here you see how black text with a 4 pixel rgb(217, 197, 207) colored shadow looks like.

```
.shadow{ text-shadow: 4px 4px 2px rgb(217, 197, 207) }
```

Border

The CSS property to change the border of an element to Yxy 59.1892, 0.3212, 0.3176 is called "border". The border property can be set on classes, ids or directly on the HTML element.

This example shows the color as border, it can be applied via the CSS property "border" or "border-color".

```
.border, #border, table{ border:4px solid rgb(217, 197, 207) }
```

If only the border color should be changed use the property `border-color`.

```
.border{ border-color:rgb(217, 197, 207) }
```

If you want to add a box shadow in that color use:

Here you see how a box with a 4 pixel `rgb(217, 197, 207)` colored shadow looks like.

```
.boxshadow{ -moz-box-shadow:4px 4px 4px 4px rgb(217, 197, 207); -webkit-box-shadow:4px 4px 4px 4px rgb(217, 197, 207); box-shadow:4px 4px 4px 4px rgb(217, 197, 207) }
```


Background

The CSS property to change the background color of an element to Yxy 59.1892, 0.3212, 0.3176 is called "background". The background property can be set on classes, ids or directly on the HTML element.

```
.background, #background, body{  
background: rgb(217, 197, 207) }
```

If only the background color should be changed can be used:

```
.background{ background-color: rgb(217,  
197, 207) }
```

This example shows the color as background, it is applied via the CSS property "background".

To optimize and compress your CSS code, you can use our [online CSS compressor and optimizer](#) based on csstidy. If you want to create a linear or radial gradient as background or border, check our [CSS Gradient Generator](#).

Hey! You found this booklet interesting? Support Converting Colors with the new Membership Option!

The pro membership hides all ads, plus gives you double the colors in the color bucket, and more awesome pro features!

[Learn more, Memberships starting at \\$2.50/m!](#)

**Follow me
on Twitter!**

@ConvertingColor