

Converting Colors

Yxy(59.2431, 0.3264, 0.3283)

Have a look what the booklet for
Yxy(59.2431, 0.3264, 0.3283)
contains.

Yxy(59.1106, 0.3263, 0.3279)	3
<i>Conversions</i>	4
<i>Details</i>	6
<i>Harmonies</i>	12
<i>Previews</i>	24
<i>Color Blindness Simulation</i>	27
<i>CSS Examples</i>	30

Color

Yxy(59.1106, 0.3263, 0.3279)

Conversions

Conversions Part 1

Format	Color
Hex	D8C6C7
RGB	216, 198, 199
RGB Percent	85%, 78%, 78%
CMY	0.1529, 0.2235, 0.2196
CMYK	0.00, 0.08, 0.08, 0.15
HSL	357°, 19%, 81%
HSV	357°, 8%, 85%
XYZ	58.8222, 59.1106, 62.3374
YIQ	203.4960, 10.4070, 4.1270

Conversions

Conversions Part 2

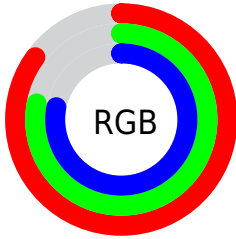
Format	Color
R _Y B	216, 198, 199
Decimal	14206663
CIE Lab	81.35, 6.47, 1.78
CIE LCh	81, 6.710, 15.366
Yxy	59.1106, 0.3263, 0.3279
Android (android.graphics.Color)	4292396743 (0xFFD8C6C7)
YUV	203.4960, -2.2165, 10.9660
Hunter-Lab	76.8834, 2.0213, 5.7458

Details

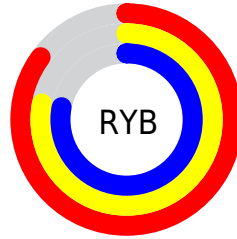
The Yxy color $59.1106, 0.3263, 0.3279$ is a light color, and the websafe version is hex `CCCCCC`. A complement of this color would be $66.0283, 0.3005, 0.3301$, and the grayscale version is $60.0600, 0.3127, 0.3290$.

A 20% lighter version of the original color is $100.0000, 0.3127, 0.3290$, and $29.5679, 0.3299, 0.3275$ is the 20% darker color. If you saturate the color by 10%, you get $49.0468, 0.3463, 0.3265$, and if you desaturate by 10%, it is $70.7150, 0.3103, 0.3292$.

Distribution



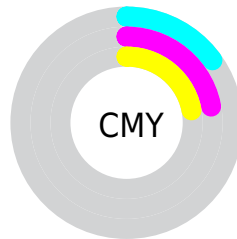
- Red (85%)
- Green (78%)
- Blue (78%)



- Red (85%)
- Yellow (78%)
- Blue (78%)



- Cyan (0%)
- Magenta (8%)
- Yellow (8%)
- Black (15%)



- Cyan (15%)
- Magenta (22%)
- Yellow (22%)

Brightness & Saturation Gradients

These gradients show how the Yxy color 59.1106, 0.3263, 0.3279 changes by changing the brightness by 10 percent. The first figure shows a shift by +10% for each color and the second figure -10%.

Similar to the brightness gradients but the following saturation gradients show a change of the Yxy color 59.1106, 0.3263, 0.3279 by changing the saturation by 10% instead.

■ 59.1106, 0.3263,
0.3279

■ 59.1106, 0.3263,
0.3279

421.3117, 0.3198,
0.3285

■ 42.7022, 0.3279,
0.3278

103.5384, 0.3240,
0.3281

■ 29.6515, 0.3298,
0.3276

132.3265, 0.3231,
0.3282

■ 19.5742, 0.3324,
0.3273

166.0100, 0.3223,
0.3282

■ 12.0859, 0.3358,
0.3270

204.9733, 0.3217,
0.3283

■ 6.8022, 0.3408,
0.3265

249.6007, 0.3211,
0.3284

■ 3.3387, 0.3484,
0.3256

300.2766, 0.3206,

■ 1.3110, 0.3615,

0.3284

0.3240

357.3855, 0.3202,
0.3284

0.1497, 0.6144,
0.3064

0.0000, 0.0000,
0.0000

59.1106, 0.3263,
0.3279

59.1106, 0.3263,
0.3279

49.0468, 0.3463,
0.3265

70.7150, 0.3103,
0.3292

40.4514, 0.3712,
0.3251

83.9127, 0.2974,
0.3304

33.2583, 0.4020,
0.3237

93.3398, 0.2894,
0.3289

27.3929, 0.4391,
0.3225

■ 22.7741, 0.4821,
0.3217

■ 19.3117, 0.5286,
0.3217

■ 16.9034, 0.5736,
0.3227

■ 15.4291, 0.6101,
0.3248

■ 14.7133, 0.6327,
0.3272

Harmonies

Analogous

The Analogous color harmony consists of three colors that are next to each other on the color wheel.



59.1106, 0.3193, 0.3208



59.1106, 0.3263, 0.3279



59.1106, 0.3297, 0.3354

Triad

The Triadic color harmony groups three colors that are evenly spaced from another and form a triangle on the color wheel.



59.1106, 0.3263, 0.3279



59.1106, 0.3147, 0.3427



59.1106, 0.2972, 0.3165

Complementary

The Complementary color scheme is a pair of colors which are on the opposite of each other on the color wheel.



59.1106, 0.3263, 0.3279



66.0283, 0.3005, 0.3301

Split Complementary

Split-complementary colors differ from the complementary color scheme. The scheme consists of three colors, the original color and two neighbors of the complement color.



59.1106, 0.2961, 0.3222



59.1106, 0.3263, 0.3279



59.1106, 0.3061, 0.3375

Square

The Square scheme is like the rectangle color scheme, but the four colors are evenly spaced on the color wheel.



59.1106, 0.3263, 0.3279



59.1106, 0.3229, 0.3441



59.1106, 0.2993, 0.3299



59.1106, 0.3025, 0.3142

Rectangle

The Rectangle color scheme consists of four colors that form a rectangle on the color wheel.



59.1106, 0.3263, 0.3279



59.1106, 0.3294, 0.3397



59.1106, 0.2993, 0.3299



59.1106, 0.2964, 0.3181

Sweetspot

The Sweet Spot groups the original color and five complimentary colors.



59.1132, 0.3263, 0.3279



94.7589, 0.3174, 0.3286



59.7660, 0.3127, 0.3086



19.9901, 0.3187, 0.3285



0.0000, 0.0000, 0.0000



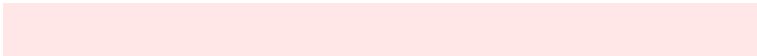
21.4041, 0.3127, 0.3290

Same Dimension

The Same Dimension uses a secret algorithm to generate beautiful new colors.



59.1132, 0.3263, 0.3279



83.3397, 0.3295, 0.3277



62.7261, 0.3262, 0.3379



12.4318, 0.3283, 0.3278



8.6617, 0.6337, 0.3265



0.5264, 0.6145, 0.3159

Inverse Universe

The Inverse Universe completely reimagines the original color for something new.



59.1132, 0.3263, 0.3279



83.3397, 0.3295, 0.3277



62.1764, 0.2999, 0.3199



12.4318, 0.3283, 0.3278



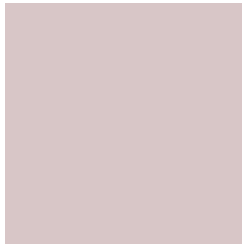
8.6617, 0.6337, 0.3265



0.5264, 0.6145, 0.3159

Previews

White Background



This preview shows how the Yxy color 59.1106, 0.3263, 0.3279 looks on a white background.

Color Contrast Check

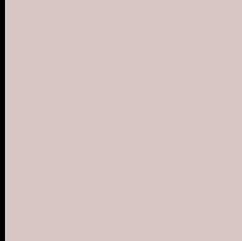
Large Text (above 18pt) WCAG AA × Fail

Any Text WCAG AA × Fail

Large Text (above 18pt) WCAG AAA × Fail

Any Text WCAG AAA × Fail

Black Background



This preview shows how the Yxy color 59.1106, 0.3263, 0.3279 looks on a black background.

Color Contrast Check

Large Text (above 18pt) WCAG AA ✓ Pass

Any Text WCAG AA ✓ Pass

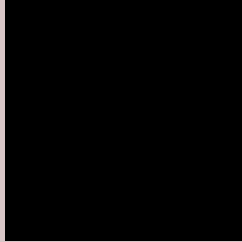
Large Text (above 18pt) WCAG AAA ✓ Pass

Any Text WCAG AAA ✓ Pass

If you want to check with other color combinations, try the [Color Contrast Checker](#).

Yxy 59.1106, 0.3263, 0.3279

Background



This preview shows how black text looks on a background with the Yxy color 59.1106, 0.3263, 0.3279.



This preview shows how white text looks on a background with the Yxy color 59.1106, 0.3263, 0.3279.

Color Blindness Simulation

Color vision deficiency is a very complex topic, and I could not describe the different causes any better than Wikipedia does, so if you want to learn more, you should check out their [article about color blindness](#).

Dichromacy



Original Color

59.1106, 0.3263, 0.3279

Protanopia

59.1121, 0.3166, 0.3290

Deuteranopia

59.2914, 0.3322, 0.3257



Tritanopia

59.0884, 0.3190, 0.3121

Trichromacy



Original Color

59.1106, 0.3263, 0.3279

Protanomaly

59.1803, 0.3206, 0.3290

Deuteranomaly

59.2717, 0.3296, 0.3268

Tritanomaly

59.1892, 0.3212, 0.3176

Monochromacy



Original Color

59.1106, 0.3263, 0.3279

Achromatopsia

59.7202, 0.3127, 0.3290

Achromatomaly

59.4475, 0.3174, 0.3279

CSS Examples

Text

The CSS property to change the color of the text to Yxy 59.1106, 0.3263, 0.3279 is called "color". The color property can be set on classes, ids or directly on the HTML element.

This example shows how text in the color $rgb(216, 198, 199)$ looks like.

```
.text, #text, p{  
    color:rgb(216, 198, 199)  
}
```

If you want to add a text shadow in that color use the text-shadow property, you can generate a text shadow directly with our [CSS Text Shadow Generator](#).

Here you see how black text with a 4 pixel rgb(216, 198, 199) colored shadow looks like.

```
.shadow{ text-shadow: 4px 4px 2px rgb(216, 198, 199) }
```

Border

The CSS property to change the border of an element to Yxy 59.1106, 0.3263, 0.3279 is called "border". The border property can be set on classes, ids or directly on the HTML element.

This example shows the color as border, it can be applied via the CSS property "border" or "border-color".

```
.border, #border, table{ border:4px solid rgb(216, 198, 199) }
```

If only the border color should be changed use the property `border-color`.

```
.border{ border-color:rgb(216, 198, 199) }
```

If you want to add a box shadow in that color use:

Here you see how a box with a 4 pixel `rgb(216, 198, 199)` colored shadow looks like.

```
.boxshadow{ -moz-box-shadow:4px 4px 4px  
4px rgb(216, 198, 199); -webkit-box-  
shadow:4px 4px 4px 4px rgb(216, 198, 199);  
box-shadow:4px 4px 4px 4px rgb(216, 198,  
199) }
```


Background

The CSS property to change the background color of an element to Yxy 59.1106, 0.3263, 0.3279 is called "background". The background property can be set on classes, ids or directly on the HTML element.

```
.background, #background, body{  
background: rgb(216, 198, 199) }
```

If only the background color should be changed can be used:

```
.background{ background-color: rgb(216,  
198, 199) }
```

This example shows the color as background, it is applied via the CSS property "background".

To optimize and compress your CSS code, you can use our [online CSS compressor and optimizer](#) based on csstidy. If you want to create a linear or radial gradient as background or border, check our [CSS Gradient Generator](#).

Hey! You found this booklet interesting? Support Converting Colors with the new Membership Option!

The pro membership hides all ads, plus gives you double the colors in the color bucket, and more awesome pro features!

[Learn more, Memberships starting at \\$2.50/m!](#)

**Follow me
on Twitter!**

@ConvertingColor