

# Converting Colors

Yxy(59.2488, 0.3380, 0.3292)

Have a look what the booklet for  
Yxy(59.2488, 0.3380, 0.3292)  
contains.

<b>Yxy(59.1391, 0.3379, 0.3291)</b> .....	3
<b>Conversions</b> .....	4
<b>Details</b> .....	6
<b>Harmonies</b> .....	12
<b>Previews</b> .....	24
<b>Color Blindness Simulation</b> .....	27
<b>CSS Examples</b> .....	30

# Color

**Yxy(59.1391, 0.3379, 0.3291)**

# Conversions

## Conversions Part 1

Format	Color
Hex	E2C3C3
RGB	226, 195, 195
RGB Percent	89%, 76%, 76%
CMY	0.1139, 0.2352, 0.2353
CMYK	0.00, 0.14, 0.14, 0.11
HSL	0°, 35%, 83%
HSV	0°, 14%, 89%
XYZ	60.7205, 59.1391, 59.8399
YIQ	204.2690, 18.4760, 6.5720

# Conversions

## Conversions Part 2

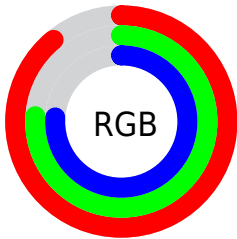
<b>Format</b>	<b>Color</b>
R <sub>Y</sub> B	226, 195, 195
Decimal	14861251
CIE Lab	81.37, 10.94, 4.05
CIE LCh	81, 11.665, 20.333
Yxy	59.1391, 0.3379, 0.3291
Android (android.graphics.Color)	4293051331 (0xFFE2C3C3)
YUV	204.2690, -4.5696, 19.0581
Hunter-Lab	76.9020, 6.3621, 7.6959

# Details

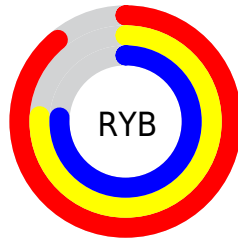
The Yxy color **59.1391, 0.3379, 0.3291** is a light color, and the websafe version is hex **FFCCCC**. A complement of this color would be **71.4503, 0.2919, 0.3289**, and the grayscale version is **60.5824, 0.3127, 0.3290**.

A 20% lighter version of the original color is **97.9091, 0.3146, 0.3290**, and **29.5189, 0.3446, 0.3291** is the 20% darker color. If you saturate the color by 10%, you get **48.8302, 0.3619, 0.3292**, and if you desaturate by 10%, it is **71.1378, 0.3188, 0.3290**.

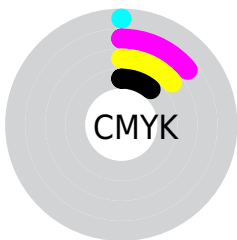
# Distribution



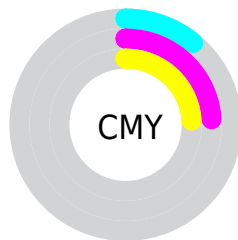
- Red (89%)
- Green (76%)
- Blue (76%)



- Red (89%)
- Yellow (76%)
- Blue (76%)



- Cyan (0%)
- Magenta (14%)
- Yellow (14%)
- Black (11%)




- Cyan (11%)
- Magenta (24%)
- Yellow (24%)


# Brightness & Saturation Gradients

These gradients show how the Yxy color 59.1391, 0.3379, 0.3291 changes by changing the brightness by 10 percent. The first figure shows a shift by +10% for each color and the second figure -10%.


Similar to the brightness gradients but the following saturation gradients show a change of the Yxy color 59.1391, 0.3379, 0.3291 by changing the saturation by 10% instead.





 59.1391, 0.3379,  
0.3291

 59.1391, 0.3379,  
0.3291


421.4172, 0.3257,  
0.3292

 42.7251, 0.3408,  
0.3291


 103.5798, 0.3336,  
0.3291

 29.6695, 0.3445,  
0.3290


132.3753, 0.3319,  
0.3292

 19.5879, 0.3492,  
0.3289


166.0668, 0.3305,  
0.3292

 12.0958, 0.3557,  
0.3287

205.0386, 0.3293,  
0.3292

 6.8090, 0.3649,  
0.3283

249.6751, 0.3282,  
0.3292

 3.3429, 0.3791,  
0.3275

300.3608, 0.3273,

 1.3133, 0.4037,

0.3292

357.4800, 0.3265,  
0.3292

0.3255

0.1514, 0.7307,  
0.2693

0.0000, 0.0000,  
0.0000

59.1391, 0.3379,  
0.3291

59.1391, 0.3379,  
0.3291

48.8302, 0.3619,  
0.3292

71.1378, 0.3188,  
0.3290

40.1277, 0.3917,  
0.3293

84.8889, 0.3035,  
0.3290

32.9532, 0.4281,  
0.3294

94.9031, 0.2952,  
0.3289

27.2185, 0.4711,  
0.3296

■ 22.8265, 0.5186,  
0.3297

■ 19.6681, 0.5660,  
0.3299

■ 17.6170, 0.6058,  
0.3300

■ 16.5202, 0.6311,  
0.3300

■ 16.1671, 0.6400,  
0.3300

# Harmonies

## Analogous

The Analogous color harmony consists of three colors that are next to each other on the color wheel.



59.1391, 0.3264, 0.3166



59.1391, 0.3379, 0.3291



59.1391, 0.3425, 0.3419

# Triad

The Triadic color harmony groups three colors that are evenly spaced from another and form a triangle on the color wheel.



59.1391, 0.3379, 0.3291



59.1391, 0.3135, 0.3520



59.1391, 0.2870, 0.3062

# Complementary

The Complementary color scheme is a pair of colors which are on the opposite of each other on the color wheel.



59.1391, 0.3379, 0.3291



71.4503, 0.2919, 0.3289

# Split Complementary

Split-complementary colors differ from the complementary color scheme. The scheme consists of three colors, the original color and two neighbors of the complement color.



59.1391, 0.2838, 0.3151



59.1391, 0.3379, 0.3291



59.1391, 0.2989, 0.3418

# Square

The Square scheme is like the rectangle color scheme, but the four colors are evenly spaced on the color wheel.



59.1391, 0.3379, 0.3291



59.1391, 0.3282, 0.3555



59.1391, 0.2881, 0.3281



59.1391, 0.2970, 0.3036



# Rectangle

The Rectangle color scheme consists of four colors that form a rectangle on the color wheel.



59.1391, 0.3379, 0.3291



59.1391, 0.3410, 0.3489



59.1391, 0.2881, 0.3281



59.1391, 0.2851, 0.3086

# Sweetspot

The Sweet Spot groups the original color and five complimentary colors.



59.1417, 0.3379, 0.3291



93.0293, 0.3193, 0.3290



60.6796, 0.3143, 0.2953



19.6405, 0.3206, 0.3290



0.0000, 0.0000, 0.0000



21.4041, 0.3127, 0.3290



# Same Dimension

The Same Dimension uses a secret algorithm to generate beautiful new colors.



59.1417, 0.3379, 0.3291



74.3366, 0.3432, 0.3291



66.4332, 0.3355, 0.3463



13.7023, 0.3292, 0.3291



9.2274, 0.6400, 0.3300



0.6402, 0.6398, 0.3302



# Inverse Universe

The Inverse Universe completely reimagines the original color for something new.



71.4503, 0.2919, 0.3289



93.0450, 0.2884, 0.3289



63.4206, 0.2914, 0.3111



15.5704, 0.2982, 0.3289



34.1073, 0.2246, 0.3285

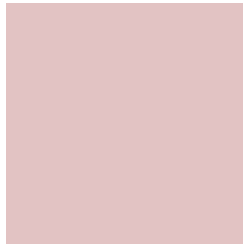


2.3648, 0.2246, 0.3285



# Previews

## White Background



This preview shows how the Yxy color 59.1391, 0.3379, 0.3291 looks on a white background.

## Color Contrast Check

Large Text (above 18pt) WCAG AA × Fail

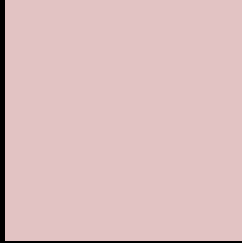
Any Text WCAG AA × Fail

Large Text (above 18pt) WCAG AAA × Fail

Any Text WCAG AAA × Fail



# Black Background



This preview shows how the Yxy color 59.1391, 0.3379, 0.3291 looks on a black background.

## Color Contrast Check

Large Text (above 18pt) WCAG AA ✓ Pass

Any Text WCAG AA ✓ Pass

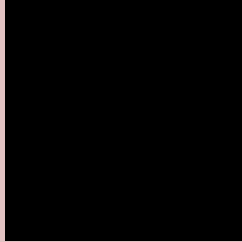
Large Text (above 18pt) WCAG AAA ✓ Pass

Any Text WCAG AAA ✓ Pass

If you want to check with other color combinations, try the [Color Contrast Checker](#).

**Yxy 59.1391, 0.3379, 0.3291**

## Background



This preview shows how black text looks on a background with the Yxy color 59.1391, 0.3379, 0.3291.



This preview shows how white text looks on a background with the Yxy color 59.1391, 0.3379, 0.3291.

# Color Blindness Simulation

Color vision deficiency is a very complex topic, and I could not describe the different causes any better than Wikipedia does, so if you want to learn more, you should check out their [article about color blindness](#).

## Dichromacy



### Original Color

59.1391, 0.3379, 0.3291

### Protanopia

59.1622, 0.3188, 0.3314

### Deuteranopia

59.4275, 0.3369, 0.3302



## Tritanopia

59.1880, 0.3296, 0.3124

# Trichromacy



## Original Color

59.1391, 0.3379, 0.3291

## Protanomaly

59.2202, 0.3253, 0.3302

## Deuteranomaly

59.4275, 0.3369, 0.3302

## Tritanomaly

59.2263, 0.3326, 0.3190

# Monochromacy



## Original Color

59.1391, 0.3379, 0.3291

## Achromatopsia

60.3827, 0.3127, 0.3290

## Achromatomaly

59.9874, 0.3213, 0.3290

# CSS Examples

## Text

The CSS property to change the color of the text to Yxy 59.1391, 0.3379, 0.3291 is called "color". The color property can be set on classes, ids or directly on the HTML element.

This example shows how text in the color `rgb(226, 195, 195)` looks like.

```
.text, #text, p{  
    color:rgb(226, 195, 195)  
}
```

If you want to add a text shadow in that color use the text-shadow property, you can generate a text shadow directly with our [CSS Text Shadow Generator](#).

Here you see how black text with a 4 pixel rgb(226, 195, 195) colored shadow looks like.

```
.shadow{ text-shadow: 4px 4px 2px rgb(226, 195, 195) }
```

## Border

The CSS property to change the border of an element to Yxy 59.1391, 0.3379, 0.3291 is called "border". The border property can be set on classes, ids or directly on the HTML element.

This example shows the color as border, it can be applied via the CSS property "border" or "border-color".

```
.border, #border, table{ border:4px solid rgb(226, 195, 195) }
```

If only the border color should be changed use the property `border-color`.

```
.border{ border-color:rgb(226, 195, 195) }
```

If you want to add a box shadow in that color use:

Here you see how a box with a 4 pixel `rgb(226, 195, 195)` colored shadow looks like.

```
.boxshadow{ -moz-box-shadow:4px 4px 4px 4px rgb(226, 195, 195); -webkit-box-shadow:4px 4px 4px 4px rgb(226, 195, 195); box-shadow:4px 4px 4px 4px rgb(226, 195, 195) }
```



# Background

The CSS property to change the background color of an element to Yxy 59.1391, 0.3379, 0.3291 is called "background". The background property can be set on classes, ids or directly on the HTML element.

```
.background, #background, body{  
background: rgb(226, 195, 195) }
```

If only the background color should be changed can be used:

```
.background{ background-color: rgb(226,  
195, 195) }
```

This example shows the color as background, it is applied via the CSS property "background".

To optimize and compress your CSS code, you can use our [online CSS compressor and optimizer](#) based on csstidy. If you want to create a linear or radial gradient as background or border, check our [CSS Gradient Generator](#).

Hey! You found this booklet interesting? Support Converting Colors with the new Membership Option!

The pro membership hides all ads, plus gives you double the colors in the color bucket, and more awesome pro features!

**[Learn more, Memberships starting at \\$2.50/m!](#)**

**Follow me  
on Twitter!**

@ConvertingColor