

Converting Colors

$Yxy(59.4243, 0.3395, 0.3367)$

Have a look what the booklet for
Yxy(59.4243, 0.3395, 0.3367)
contains.

Yxy(59.4975, 0.3399, 0.3370)	3
Conversions	4
Details	6
Harmonies	12
Previews	24
Color Blindness Simulation	27
CSS Examples	30

Color

Yxy(59.4975, 0.3399, 0.3370)

Conversions

Conversions Part 1

Format	Color
Hex	E0C5BE
RGB	224, 197, 190
RGB Percent	88%, 77%, 75%
CMY	0.1214, 0.2275, 0.2548
CMYK	0.00, 0.12, 0.15, 0.12
HSL	12°, 35%, 81%
HSV	12°, 15%, 88%
XYZ	60.0095, 59.4975, 57.0434
YIQ	204.2750, 18.3390, 3.5470

Conversions

Conversions Part 2

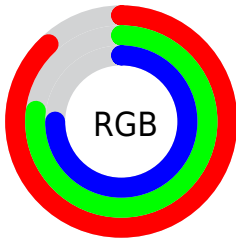
Format	Color
R _Y B	224, 199, 190
Decimal	14730686
CIE Lab	81.56, 8.40, 6.98
CIE LCh	82, 10.928, 39.727
Yxy	59.4975, 0.3399, 0.3370
Android (android.graphics.Color)	4292920766 (0xFFE0C5BE)
YUV	204.2750, -7.0376, 17.2988
Hunter-Lab	77.1346, 3.8845, 10.1474

Details

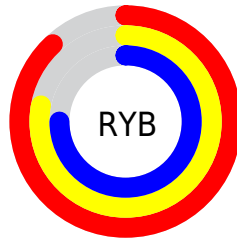
The Yxy color **59.4975, 0.3399, 0.3370** is a light color, and the websafe version is hex **FFCCCC**. A complement of this color would be **65.9860, 0.2894, 0.3209**, and the grayscale version is **60.6071, 0.3127, 0.3290**.

A 20% lighter version of the original color is **98.7974, 0.3180, 0.3367**, and **29.7759, 0.3462, 0.3381** is the 20% darker color. If you saturate the color by 10%, you get **50.9799, 0.3626, 0.3427**, and if you desaturate by 10%, it is **69.1262, 0.3211, 0.3316**.

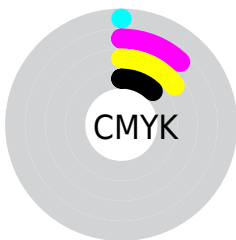
Distribution



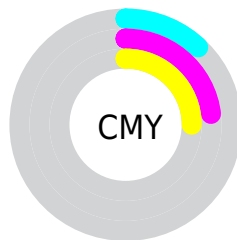
- Red (88%)
- Green (77%)
- Blue (75%)



- Red (88%)
- Yellow (78%)
- Blue (75%)



- Cyan (0%)
- Magenta (12%)
- Yellow (15%)
- Black (12%)




- Cyan (12%)
- Magenta (23%)
- Yellow (25%)

Brightness & Saturation Gradients


These gradients show how the Yxy color 59.4975, 0.3399, 0.3370 changes by changing the brightness by 10 percent. The first figure shows a shift by +10% for each color and the second figure -10%.


Similar to the brightness gradients but the following saturation gradients show a change of the Yxy color 59.4975, 0.3399, 0.3370 by changing the saturation by 10% instead.

 59.4975, 0.3399,
0.3370

 59.4975, 0.3399,
0.3370


422.7431, 0.3268,
0.3333

 43.0137, 0.3430,
0.3378


 104.1004, 0.3352,
0.3357

 29.8959, 0.3470,
0.3389


132.9883, 0.3335,
0.3352

 19.7596, 0.3521,
0.3402


166.7797, 0.3319,
0.3348

 12.2204, 0.3591,
0.3419

205.8590, 0.3306,
0.3344

 6.8940, 0.3690,
0.3441

250.6106, 0.3295,
0.3341

 3.3959, 0.3842,
0.3473

301.4189, 0.3285,

 1.3417, 0.4106,

0.3338

0.3519

358.6682, 0.3276,
0.3335

0.1732, 0.6810,
0.3190

0.0000, 0.0000,
0.0000

59.4975, 0.3399,
0.3370

59.4975, 0.3399,
0.3370

50.9799, 0.3626,
0.3427

69.1262, 0.3211,
0.3316

43.5256, 0.3898,
0.3484

79.8960, 0.3056,
0.3267

37.0947, 0.4219,
0.3539

91.7016, 0.2940,
0.3243

31.6420, 0.4588,
0.3584

94.5926, 0.2941,
0.3289

■ 27.1187, 0.4993,
0.3613

■ 23.4718, 0.5407,
0.3613

■ 20.6427, 0.5784,
0.3578

■ 18.5647, 0.6076,
0.3508

■ 17.8036, 0.6185,
0.3471

Harmonies

Analogous

The Analogous color harmony consists of three colors that are next to each other on the color wheel.



59.4975, 0.3331, 0.3248



59.4975, 0.3399, 0.3370



59.4975, 0.3393, 0.3475

Triad

The Triadic color harmony groups three colors that are evenly spaced from another and form a triangle on the color wheel.



59.4975, 0.3399, 0.3370



59.4975, 0.3044, 0.3449



59.4975, 0.2941, 0.3054

Complementary

The Complementary color scheme is a pair of colors which are on the opposite of each other on the color wheel.



59.4975, 0.3399, 0.3370



65.9860, 0.2894, 0.3209

Split Complementary

Split-complementary colors differ from the complementary color scheme. The scheme consists of three colors, the original color and two neighbors of the complement color.



59.4975, 0.2868, 0.3100



59.4975, 0.3399, 0.3370



59.4975, 0.2927, 0.3328

Square

The Square scheme is like the rectangle color scheme, but the four colors are evenly spaced on the color wheel.



59.4975, 0.3399, 0.3370



59.4975, 0.3185, 0.3524



59.4975, 0.2863, 0.3200



59.4975, 0.3064, 0.3068

Rectangle

The Rectangle color scheme consists of four colors that form a rectangle on the color wheel.



59.4975, 0.3399, 0.3370



59.4975, 0.3347, 0.3520



59.4975, 0.2863, 0.3200



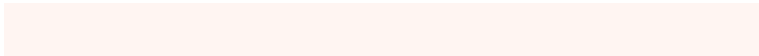
59.4975, 0.2910, 0.3063

Sweetspot

The Sweet Spot groups the original color and five complimentary colors.



59.5002, 0.3399, 0.3370



92.9094, 0.3209, 0.3316



57.7071, 0.3196, 0.2988



19.6799, 0.3221, 0.3319



0.0000, 0.0000, 0.0000



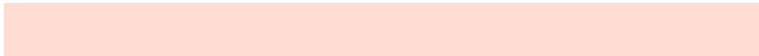
21.4041, 0.3127, 0.3290

Same Dimension

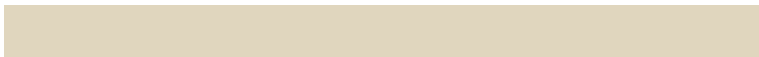
The Same Dimension uses a secret algorithm to generate beautiful new colors.



59.5002, 0.3399, 0.3370



76.2796, 0.3461, 0.3386



67.5766, 0.3371, 0.3556



14.1537, 0.3287, 0.3339



10.4919, 0.6162, 0.3489



0.8552, 0.5868, 0.3722

Inverse Universe

The Inverse Universe completely reimagines the original color for something new.



65.9860, 0.2894, 0.3209



86.4482, 0.2850, 0.3191



57.7428, 0.2887, 0.3009



15.0698, 0.2982, 0.3241



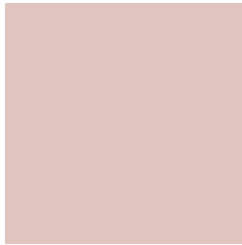
21.8458, 0.2061, 0.2620



1.6362, 0.2093, 0.2734

Previews

White Background



This preview shows how the Yxy color 59.4975, 0.3399, 0.3370 looks on a white background.

Color Contrast Check

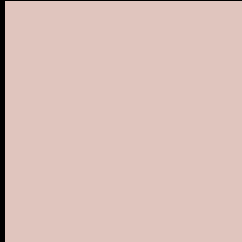
Large Text (above 18pt) WCAG AA × Fail

Any Text WCAG AA × Fail

Large Text (above 18pt) WCAG AAA × Fail

Any Text WCAG AAA × Fail

Black Background



This preview shows how the Yxy color 59.4975, 0.3399, 0.3370 looks on a black background.

Color Contrast Check

Large Text (above 18pt) WCAG AA ✓ Pass

Any Text WCAG AA ✓ Pass

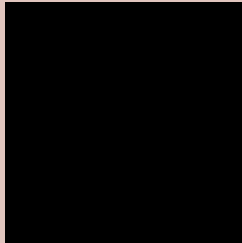
Large Text (above 18pt) WCAG AAA ✓ Pass

Any Text WCAG AAA ✓ Pass

If you want to check with other color combinations, try the [Color Contrast Checker](#).

Yxy 59.4975, 0.3399, 0.3370

Background



This preview shows how black text looks on a background with the Yxy color 59.4975, 0.3399, 0.3370.



This preview shows how white text looks on a background with the Yxy color 59.4975, 0.3399, 0.3370.

Color Blindness Simulation

Color vision deficiency is a very complex topic, and I could not describe the different causes any better than Wikipedia does, so if you want to learn more, you should check out their [article about color blindness](#).

Dichromacy



Original Color

59.4975, 0.3399, 0.3370

Protanopia

59.6466, 0.3247, 0.3396

Deuteranopia

59.5285, 0.3425, 0.3359



Tritanopia

59.5179, 0.3280, 0.3124

Trichromacy



Original Color

59.4975, 0.3399, 0.3370

Protanomaly

59.4105, 0.3297, 0.3383

Deuteranomaly

59.3663, 0.3417, 0.3359

Tritanomaly

59.4632, 0.3324, 0.3212

Monochromacy



Original Color

59.4975, 0.3399, 0.3370

Achromatopsia

60.3827, 0.3127, 0.3290

Achromatomaly

59.7457, 0.3220, 0.3313

CSS Examples

Text

The CSS property to change the color of the text to Yxy 59.4975, 0.3399, 0.3370 is called "color". The color property can be set on classes, ids or directly on the HTML element.

This example shows how text in the color `rgb(224, 197, 190)` looks like.

```
.text, #text, p{  
    color:rgb(224, 197, 190)  
}
```

If you want to add a text shadow in that color use the text-shadow property, you can generate a text shadow directly with our [CSS Text Shadow Generator](#).

Here you see how black text with a 4 pixel rgb(224, 197, 190) colored shadow looks like.

```
.shadow{ text-shadow: 4px 4px 2px rgb(224, 197, 190) }
```

Border

The CSS property to change the border of an element to Yxy 59.4975, 0.3399, 0.3370 is called "border". The border property can be set on classes, ids or directly on the HTML element.

This example shows the color as border, it can be applied via the CSS property "border" or "border-color".

```
.border, #border, table{ border:4px solid rgb(224, 197, 190) }
```

If only the border color should be changed use the property border-color.

```
.border{ border-color:rgb(224, 197, 190) }
```

If you want to add a box shadow in that color use:

Here you see how a box with a 4 pixel rgb(224, 197, 190) colored shadow looks like.

```
.boxshadow{ -moz-box-shadow:4px 4px 4px  
4px rgb(224, 197, 190); -webkit-box-  
shadow:4px 4px 4px 4px rgb(224, 197, 190);  
box-shadow:4px 4px 4px 4px rgb(224, 197,  
190) }
```


Background

The CSS property to change the background color of an element to Yxy 59.4975, 0.3399, 0.3370 is called "background". The background property can be set on classes, ids or directly on the HTML element.

```
.background, #background, body{  
background: rgb(224, 197, 190) }
```

If only the background color should be changed can be used:

```
.background{ background-color: rgb(224,  
197, 190) }
```

This example shows the color as background, it is applied via the CSS property "background".

To optimize and compress your CSS code, you can use our [online CSS compressor and optimizer](#) based on csstidy. If you want to create a linear or radial gradient as background or border, check our [CSS Gradient Generator](#).

Hey! You found this booklet interesting? Support Converting Colors with the new Membership Option!

The pro membership hides all ads, plus gives you double the colors in the color bucket, and more awesome pro features!

[Learn more, Memberships starting at \\$2.50/m!](#)

**Follow me
on Twitter!**

@ConvertingColor