

Converting Colors

Yxy(59.5621, 0.3421, 0.3435)

Have a look what the booklet for
Yxy(59.5621, 0.3421, 0.3435)
contains.

Yxy(59.5789, 0.3428, 0.3439)	3
Conversions	4
Details	6
Harmonies	12
Previews	24
Color Blindness Simulation	27
CSS Examples	30

Color

Yxy(59.5789, 0.3428, 0.3439)

Conversions

Conversions Part 1

Format	Color
Hex	DFC6B9
RGB	223, 198, 185
RGB Percent	87%, 78%, 73%
CMY	0.1254, 0.2235, 0.2744
CMYK	0.00, 0.11, 0.17, 0.13
HSL	20°, 37%, 80%
HSV	20°, 17%, 87%
XYZ	59.3883, 59.5789, 54.2776
YIQ	203.9930, 19.0730, 1.2570

Conversions

Conversions Part 2

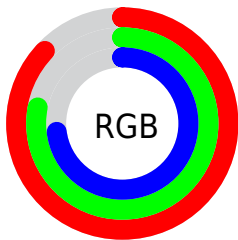
Format	Color
R _Y B	223, 205, 185
Decimal	14665401
CIE Lab	81.61, 6.73, 9.71
CIE LCh	82, 11.813, 55.283
Yxy	59.5789, 0.3428, 0.3439
Android (android.graphics.Color)	4292855481 (0xFFDFC6B9)
YUV	203.9930, -9.3635, 16.6691
Hunter-Lab	77.1874, 2.2609, 12.3389

Details

The Yxy color **59.5789, 0.3428, 0.3439** is a light color, and the websafe version is hex **CCCCCC**. A complement of this color would be **61.7587, 0.2864, 0.3136**, and the grayscale version is **60.4335, 0.3127, 0.3290**.

A 20% lighter version of the original color is **99.1309, 0.3209, 0.3425**, and **29.9373, 0.3512, 0.3472** is the 20% darker color. If you saturate the color by 10%, you get **52.3212, 0.3647, 0.3533**, and if you desaturate by 10%, it is **67.6406, 0.3241, 0.3350**.

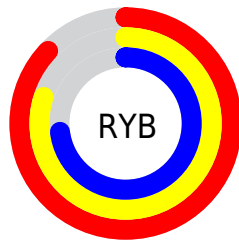
Distribution



Red (87%)

Green (78%)

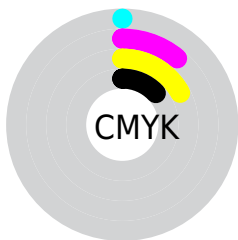
Blue (73%)



Red (87%)

Yellow (80%)

Blue (73%)

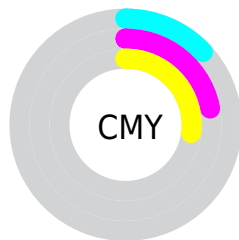


Cyan (0%)

Magenta (11%)

Yellow (17%)

Black (13%)



Cyan (13%)


Magenta (22%)

Yellow (27%)

Brightness & Saturation Gradients


These gradients show how the Yxy color 59.5789, 0.3428, 0.3439 changes by changing the brightness by 10 percent. The first figure shows a shift by +10% for each color and the second figure -10%.


Similar to the brightness gradients but the following saturation gradients show a change of the Yxy color 59.5789, 0.3428, 0.3439 by changing the saturation by 10% instead.

 59.5789, 0.3428,
0.3439

 59.5789, 0.3428,
0.3439

423.0439, 0.3283,
0.3369

 43.0793, 0.3463,
0.3455

 104.2186, 0.3376,
0.3415

 29.9473, 0.3506,
0.3475


133.1274, 0.3357,
0.3405

 19.7986, 0.3563,
0.3501


166.9415, 0.3340,
0.3397

 12.2487, 0.3640,
0.3534

206.0452, 0.3325,
0.3390

 6.9133, 0.3748,
0.3580

250.8229, 0.3313,
0.3384

 3.4080, 0.3915,
0.3646

301.6589, 0.3302,

 1.3482, 0.4222,

0.3378

358.9378, 0.3292,
0.3374

0.3766

0.1781, 0.6519,
0.3481

0.0000, 0.0000,
0.0000

59.5789, 0.3428,
0.3439

59.5789, 0.3428,
0.3439

52.3212, 0.3647,
0.3533

67.6406, 0.3241,
0.3350

45.8342, 0.3903,
0.3627

76.5224, 0.3083,
0.3266

40.0939, 0.4195,
0.3716

86.2499, 0.2949,
0.3189

35.0720, 0.4522,
0.3793

94.4312, 0.2935,
0.3289

■ 30.7381, 0.4870,
0.3845

■ 27.0595, 0.5221,
0.3859

■ 24.0003, 0.5543,
0.3826

■ 21.5190, 0.5807,
0.3744

■ 20.8836, 0.5877,
0.3715

Harmonies

Analogous

The Analogous color harmony consists of three colors that are next to each other on the color wheel.



59.5789, 0.3395, 0.3313



59.5789, 0.3428, 0.3439



59.5789, 0.3378, 0.3530

Triad

The Triadic color harmony groups three colors that are evenly spaced from another and form a triangle on the color wheel.



59.5789, 0.3428, 0.3439



59.5789, 0.2966, 0.3398



59.5789, 0.2990, 0.3035

Complementary

The Complementary color scheme is a pair of colors which are on the opposite of each other on the color wheel.



59.5789, 0.3428, 0.3439



61.7587, 0.2864, 0.3136

Split Complementary

Split-complementary colors differ from the complementary color scheme. The scheme consists of three colors, the original color and two neighbors of the complement color.



59.5789, 0.2880, 0.3051



59.5789, 0.3428, 0.3439



59.5789, 0.2866, 0.3258

Square

The Square scheme is like the rectangle color scheme, but the four colors are evenly spaced on the color wheel.



59.5789, 0.3428, 0.3439



59.5789, 0.3110, 0.3509



59.5789, 0.2835, 0.3131



59.5789, 0.3139, 0.3084

Rectangle

The Rectangle color scheme consists of four colors that form a rectangle on the color wheel.



59.5789, 0.3428, 0.3439



59.5789, 0.3306, 0.3556



59.5789, 0.2835, 0.3131



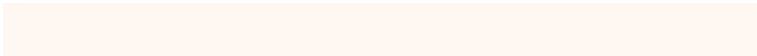
59.5789, 0.2947, 0.3033

Sweetspot

The Sweet Spot groups the original color and five complimentary colors.



59.5816, 0.3428, 0.3439



93.9658, 0.3207, 0.3332



55.0672, 0.3245, 0.3005



19.9359, 0.3219, 0.3338



0.0000, 0.0000, 0.0000



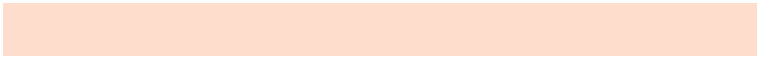
21.4041, 0.3127, 0.3290

Same Dimension

The Same Dimension uses a secret algorithm to generate beautiful new colors.



59.5816, 0.3428, 0.3439



77.5538, 0.3493, 0.3468



68.6591, 0.3394, 0.3645



14.4620, 0.3283, 0.3371



12.4658, 0.5850, 0.3737



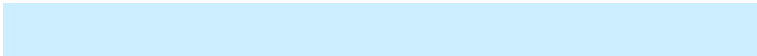
1.0264, 0.5551, 0.3974

Inverse Universe

The Inverse Universe completely reimagines the original color for something new.



61.7587, 0.2864, 0.3136



80.9630, 0.2815, 0.3105



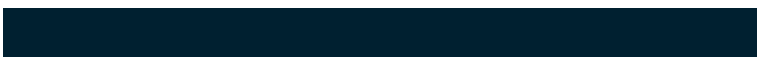
53.0603, 0.2853, 0.2909



14.7428, 0.2982, 0.3208



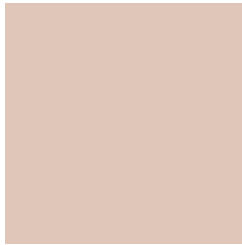
15.5902, 0.1927, 0.2137



1.2449, 0.1982, 0.2335

Previews

White Background



This preview shows how the Yxy color 59.5789, 0.3428, 0.3439 looks on a white background.

Color Contrast Check

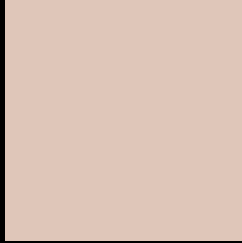
Large Text (above 18pt) WCAG AA × Fail

Any Text WCAG AA × Fail

Large Text (above 18pt) WCAG AAA × Fail

Any Text WCAG AAA × Fail

Black Background



This preview shows how the Yxy color 59.5789, 0.3428, 0.3439 looks on a black background.

Color Contrast Check

Large Text (above 18pt) WCAG AA ✓ Pass

Any Text WCAG AA ✓ Pass

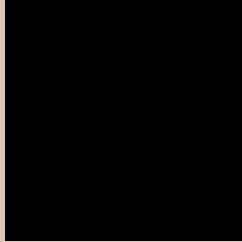
Large Text (above 18pt) WCAG AAA ✓ Pass

Any Text WCAG AAA ✓ Pass

If you want to check with other color combinations, try the [Color Contrast Checker](#).

Yxy 59.5789, 0.3428, 0.3439

Background



This preview shows how black text looks on a background with the Yxy color 59.5789, 0.3428, 0.3439.



This preview shows how white text looks on a background with the Yxy color 59.5789, 0.3428, 0.3439.

Color Blindness Simulation

Color vision deficiency is a very complex topic, and I could not describe the different causes any better than Wikipedia does, so if you want to learn more, you should check out their [article about color blindness](#).

Dichromacy



Original Color

59.5789, 0.3428, 0.3439

Protanopia

59.5306, 0.3300, 0.3467

Deuteranopia

59.6407, 0.3482, 0.3415



Tritanopia

59.4055, 0.3264, 0.3113

Trichromacy



Original Color

59.5789, 0.3428, 0.3439

Protanomaly

59.7655, 0.3350, 0.3465

Deuteranomaly

59.7662, 0.3463, 0.3427

Tritanomaly

59.2548, 0.3324, 0.3223

Monochromacy



Original Color

59.5789, 0.3428, 0.3439

Achromatopsia

60.3827, 0.3127, 0.3290

Achromatomaly

60.1212, 0.3234, 0.3348

CSS Examples

Text

The CSS property to change the color of the text to Yxy 59.5789, 0.3428, 0.3439 is called "color". The color property can be set on classes, ids or directly on the HTML element.

This example shows how text in the color `rgb(223, 198, 185)` looks like.

```
.text, #text, p{  
    color:rgb(223, 198, 185)  
}
```

If you want to add a text shadow in that color use the text-shadow property, you can generate a text shadow directly with our [CSS Text Shadow Generator](#).

Here you see how black text with a 4 pixel rgb(223, 198, 185) colored shadow looks like.

```
.shadow{ text-shadow: 4px 4px 2px rgb(223, 198, 185) }
```

Border

The CSS property to change the border of an element to Yxy 59.5789, 0.3428, 0.3439 is called "border". The border property can be set on classes, ids or directly on the HTML element.

This example shows the color as border, it can be applied via the CSS property "border" or "border-color".

```
.border, #border, table{ border:4px solid rgb(223, 198, 185) }
```

If only the border color should be changed use the property `border-color`.

```
.border{ border-color:rgb(223, 198, 185) }
```

If you want to add a box shadow in that color use:

Here you see how a box with a 4 pixel `rgb(223, 198, 185)` colored shadow looks like.

```
.boxshadow{ -moz-box-shadow:4px 4px 4px 4px rgb(223, 198, 185); -webkit-box-shadow:4px 4px 4px 4px rgb(223, 198, 185); box-shadow:4px 4px 4px 4px rgb(223, 198, 185) }
```


Background

The CSS property to change the background color of an element to Yxy 59.5789, 0.3428, 0.3439 is called "background". The background property can be set on classes, ids or directly on the HTML element.

```
.background, #background, body{  
background: rgb(223, 198, 185) }
```

If only the background color should be changed can be used:

```
.background{ background-color: rgb(223,  
198, 185) }
```

This example shows the color as background, it is applied via the CSS property "background".

To optimize and compress your CSS code, you can use our [online CSS compressor and optimizer](#) based on csstidy. If you want to create a linear or radial gradient as background or border, check our [CSS Gradient Generator](#).

Hey! You found this booklet interesting? Support Converting Colors with the new Membership Option!

The pro membership hides all ads, plus gives you double the colors in the color bucket, and more awesome pro features!

[Learn more, Memberships starting at \\$2.50/m!](#)

**Follow me
on Twitter!**

@ConvertingColor