

Converting Colors

$Y_{xy}(59.5723, 0.3417, 0.3347)$

Have a look what the booklet for
Yxy(59.5723, 0.3417, 0.3347)
contains.

Yxy(59.5723, 0.3417, 0.3347)	3
Conversions	4
Details	6
Harmonies	12
Previews	24
Color Blindness Simulation	27
CSS Examples	30

Color

Yxy(59.5723, 0.3417, 0.3347)

Conversions

Conversions Part 1

Format	Color
Hex	E3C4BF
RGB	227, 196, 191
RGB Percent	89%, 77%, 75%
CMY	0.1099, 0.2313, 0.2509
CMYK	0.00, 0.14, 0.16, 0.11
HSL	8°, 39%, 82%
HSV	8°, 16%, 89%
XYZ	60.8182, 59.5723, 57.5966
YIQ	204.6990, 20.0810, 5.0170

Conversions

Conversions Part 2

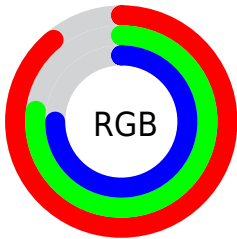
Format	Color
R _Y B	227, 197, 191
Decimal	14927039
CIE Lab	81.61, 10.15, 6.54
CIE LCh	82, 12.070, 32.785
Yxy	59.5723, 0.3417, 0.3347
Android (android.graphics.Color)	4293117119 (0xFFE3C4BF)
YUV	204.6990, -6.7536, 19.5580
Hunter-Lab	77.1831, 5.5828, 9.7840

Details

The Yxy color **59.5723, 0.3417, 0.3347** is a light color, and the websafe version is hex **FFCCCC**. A complement of this color would be **68.8591, 0.2885, 0.3232**, and the grayscale version is **60.8841, 0.3127, 0.3290**.

A 20% lighter version of the original color is **98.2260, 0.3175, 0.3348**, and **29.8389, 0.3487, 0.3350** is the 20% darker color. If you saturate the color by 10%, you get **50.3993, 0.3654, 0.3386**, and if you desaturate by 10%, it is **70.0545, 0.3223, 0.3310**.

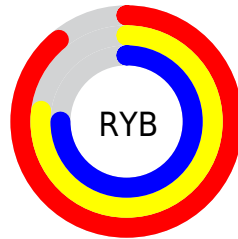
Distribution



Red (89%)

Green (77%)

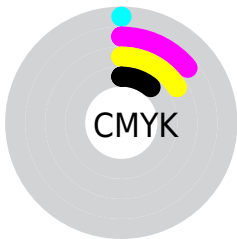
Blue (75%)



Red (89%)

Yellow (77%)

Blue (75%)

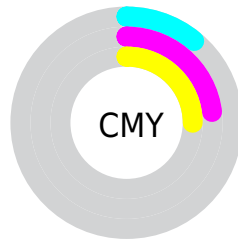


Cyan (0%)

Magenta (14%)

Yellow (16%)

Black (11%)



Cyan (11%)


Magenta (23%)


Yellow (25%)

Brightness & Saturation Gradients


These gradients show how the Yxy color 59.5723, 0.3417, 0.3347 changes by changing the brightness by 10 percent. The first figure shows a shift by +10% for each color and the second figure -10%.


Similar to the brightness gradients but the following saturation gradients show a change of the Yxy color 59.5723, 0.3417, 0.3347 by changing the saturation by 10% instead.

 59.5723, 0.3417,
0.3347

 59.5723, 0.3417,
0.3347


423.0195, 0.3277,
0.3321

 43.0740, 0.3450,
0.3353


 104.2090, 0.3367,
0.3338

 29.9432, 0.3493,
0.3360


133.1161, 0.3348,
0.3335

 19.7955, 0.3547,
0.3368


166.9284, 0.3332,
0.3332

 12.2464, 0.3622,
0.3379

206.0301, 0.3318,
0.3329

 6.9118, 0.3727,
0.3393

250.8057, 0.3306,
0.3327

 3.4070, 0.3889,
0.3411

301.6395, 0.3295,

 1.3477, 0.4170,

0.3325

358.9160, 0.3286,
0.3323

0.3432

0.1777, 0.7010,
0.2990

0.0000, 0.0000,
0.0000

59.5723, 0.3417,
0.3347

59.5723, 0.3417,
0.3347

50.3993, 0.3654,
0.3386

70.0545, 0.3223,
0.3310

42.4763, 0.3941,
0.3425

81.8861, 0.3065,
0.3276

35.7515, 0.4284,
0.3462

94.8478, 0.2958,
0.3286

30.1661, 0.4680,
0.3491

95.0667, 0.2958,
0.3290

■ 25.6567, 0.5114,
0.3506

■ 22.1534, 0.5550,
0.3500

■ 19.5779, 0.5933,
0.3467

■ 17.8401, 0.6207,
0.3410

■ 17.3327, 0.6289,
0.3388

Harmonies

Analogous

The Analogous color harmony consists of three colors that are next to each other on the color wheel.



59.5723, 0.3324, 0.3213



59.5723, 0.3417, 0.3347



59.5723, 0.3430, 0.3470

Triad

The Triadic color harmony groups three colors that are evenly spaced from another and form a triangle on the color wheel.



59.5723, 0.3417, 0.3347



59.5723, 0.3070, 0.3491



59.5723, 0.2897, 0.3035

Complementary

The Complementary color scheme is a pair of colors which are on the opposite of each other on the color wheel.



59.5723, 0.3417, 0.3347



68.8591, 0.2885, 0.3232

Split Complementary

Split-complementary colors differ from the complementary color scheme. The scheme consists of three colors, the original color and two neighbors of the complement color.



59.5723, 0.2833, 0.3101



59.5723, 0.3417, 0.3347



59.5723, 0.2932, 0.3365

Square

The Square scheme is like the rectangle color scheme, but the four colors are evenly spaced on the color wheel.



59.5723, 0.3417, 0.3347



59.5723, 0.3227, 0.3558



59.5723, 0.2846, 0.3222



59.5723, 0.3023, 0.3036

Rectangle

The Rectangle color scheme consists of four colors that form a rectangle on the color wheel.



59.5723, 0.3417, 0.3347



59.5723, 0.3391, 0.3529



59.5723, 0.2846, 0.3222



59.5723, 0.2868, 0.3050

Sweetspot

The Sweet Spot groups the original color and five complimentary colors.



59.5750, 0.3417, 0.3347



92.3988, 0.3209, 0.3307



58.8826, 0.3181, 0.2949



19.5562, 0.3222, 0.3310



0.0000, 0.0000, 0.0000



21.4041, 0.3127, 0.3290

Same Dimension

The Same Dimension uses a secret algorithm to generate beautiful new colors.



59.5750, 0.3417, 0.3347



73.4689, 0.3490, 0.3360



68.0775, 0.3386, 0.3543



14.6888, 0.3289, 0.3323



10.2096, 0.6271, 0.3403



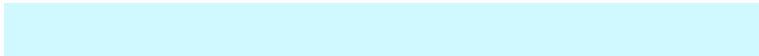
0.8574, 0.6036, 0.3589

Inverse Universe

The Inverse Universe completely reimagines the original color for something new.



68.8591, 0.2885, 0.3232



87.7260, 0.2837, 0.3219



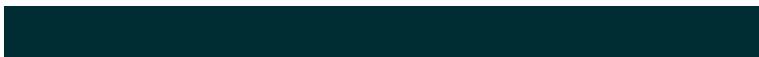
59.9079, 0.2877, 0.3024



15.9774, 0.2981, 0.3257



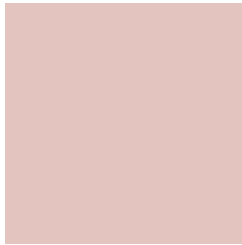
26.2571, 0.2124, 0.2846



2.0347, 0.2144, 0.2917

Previews

White Background



This preview shows how the Yxy color 59.5723, 0.3417, 0.3347 looks on a white background.

Color Contrast Check

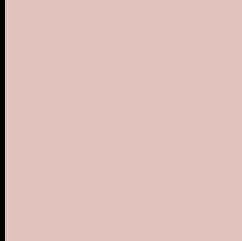
Large Text (above 18pt) WCAG AA × Fail

Any Text WCAG AA × Fail

Large Text (above 18pt) WCAG AAA × Fail

Any Text WCAG AAA × Fail

Black Background



This preview shows how the Yxy color 59.5723, 0.3417, 0.3347 looks on a black background.

Color Contrast Check

Large Text (above 18pt) WCAG AA ✓ Pass

Any Text WCAG AA ✓ Pass

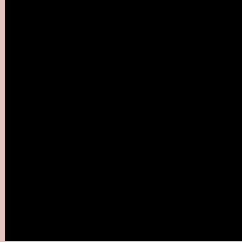
Large Text (above 18pt) WCAG AAA ✓ Pass

Any Text WCAG AAA ✓ Pass

If you want to check with other color combinations, try the [Color Contrast Checker](#).

Yxy 59.5723, 0.3417, 0.3347

Background



This preview shows how black text looks on a background with the Yxy color 59.5723, 0.3417, 0.3347.

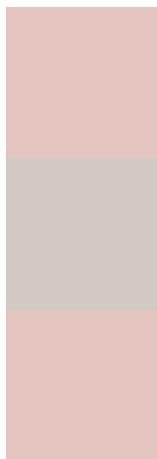


This preview shows how white text looks on a background with the Yxy color 59.5723, 0.3417, 0.3347.

Color Blindness Simulation

Color vision deficiency is a very complex topic, and I could not describe the different causes any better than Wikipedia does, so if you want to learn more, you should check out their [article about color blindness](#).

Dichromacy



Original Color

59.5723, 0.3417, 0.3347

Protanopia

59.6914, 0.3240, 0.3384

Deuteranopia

59.5723, 0.3417, 0.3347



Tritanopia

59.3520, 0.3305, 0.3125

Trichromacy



Original Color

59.5723, 0.3417, 0.3347

Protanomaly

59.7577, 0.3306, 0.3371

Deuteranomaly

59.5723, 0.3417, 0.3347

Tritanomaly

59.3418, 0.3342, 0.3202

Monochromacy



Original Color

59.5723, 0.3417, 0.3347

Achromatopsia

61.0496, 0.3127, 0.3290

Achromatomaly

60.5573, 0.3227, 0.3313

CSS Examples

Text

The CSS property to change the color of the text to Yxy 59.5723, 0.3417, 0.3347 is called "color". The color property can be set on classes, ids or directly on the HTML element.

This example shows how text in the color `rgb(227, 196, 191)` looks like.

```
.text, #text, p{  
    color:rgb(227, 196, 191)  
}
```

If you want to add a text shadow in that color use the text-shadow property, you can generate a text shadow directly with our [CSS Text Shadow Generator](#).

Here you see how black text with a 4 pixel rgb(227, 196, 191) colored shadow looks like.

```
.shadow{ text-shadow: 4px 4px 2px rgb(227, 196, 191) }
```

Border

The CSS property to change the border of an element to Yxy 59.5723, 0.3417, 0.3347 is called "border". The border property can be set on classes, ids or directly on the HTML element.

This example shows the color as border, it can be applied via the CSS property "border" or "border-color".

```
.border, #border, table{ border:4px solid rgb(227, 196, 191) }
```

If only the border color should be changed use the property `border-color`.

```
.border{ border-color:rgb(227, 196, 191) }
```

If you want to add a box shadow in that color use:

Here you see how a box with a 4 pixel `rgb(227, 196, 191)` colored shadow looks like.

```
.boxshadow{ -moz-box-shadow:4px 4px 4px  
4px rgb(227, 196, 191); -webkit-box-  
shadow:4px 4px 4px 4px rgb(227, 196, 191);  
box-shadow:4px 4px 4px 4px rgb(227, 196,  
191) }
```


Background

The CSS property to change the background color of an element to Yxy 59.5723, 0.3417, 0.3347 is called "background". The background property can be set on classes, ids or directly on the HTML element.

```
.background, #background, body{  
background: rgb(227, 196, 191) }
```

If only the background color should be changed can be used:

```
.background{ background-color: rgb(227,  
196, 191) }
```

This example shows the color as background, it is applied via the CSS property "background".

To optimize and compress your CSS code, you can use our [online CSS compressor and optimizer](#) based on csstidy. If you want to create a linear or radial gradient as background or border, check our [CSS Gradient Generator](#).

Hey! You found this booklet interesting? Support Converting Colors with the new Membership Option!

The pro membership hides all ads, plus gives you double the colors in the color bucket, and more awesome pro features!

[Learn more, Memberships starting at \\$2.50/m!](#)

**Follow me
on Twitter!**

@ConvertingColor