

Converting Colors

Yxy(59.6163, 0.3332, 0.3295)

Have a look what the booklet for
Yxy(59.6163, 0.3332, 0.3295)
contains.

Yxy(59.4933, 0.3328, 0.3291)	3
Conversions	4
Details	6
Harmonies	12
Previews	24
Color Blindness Simulation	27
CSS Examples	30

Color

Yxy(59.4933, 0.3328, 0.3291)

Conversions

Conversions Part 1

Format	Color
Hex	DEC5C5
RGB	222, 197, 197
RGB Percent	87%, 77%, 77%
CMY	0.1295, 0.2274, 0.2275
CMYK	0.00, 0.11, 0.11, 0.13
HSL	0°, 27%, 82%
HSV	0°, 11%, 87%
XYZ	60.1622, 59.4933, 61.1203
YIQ	204.4750, 14.9000, 5.3000

Conversions

Conversions Part 2

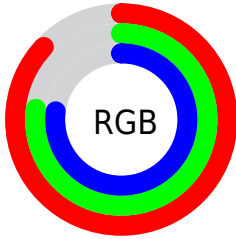
Format	Color
R _Y B	222, 197, 197
Decimal	14599621
CIE Lab	81.56, 8.78, 3.23
CIE LCh	82, 9.353, 20.188
Yxy	59.4933, 0.3328, 0.3291
Android (android.graphics.Color)	4292789701 (0xFFDEC5C5)
YUV	204.4750, -3.6852, 15.3694
Hunter-Lab	77.1319, 4.2475, 7.0102

Details

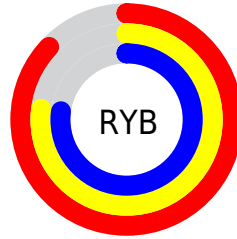
The Yxy color **59.4933, 0.3328, 0.3291** is a light color, and the websafe version is hex **CCCCCC**. A complement of this color would be **69.3535, 0.2955, 0.3289**, and the grayscale version is **60.7160, 0.3127, 0.3290**.

A 20% lighter version of the original color is **99.2994, 0.3133, 0.3290**, and **29.8436, 0.3387, 0.3291** is the 20% darker color. If you saturate the color by 10%, you get **49.2148, 0.3554, 0.3292**, and if you desaturate by 10%, it is **71.4067, 0.3147, 0.3290**.

Distribution



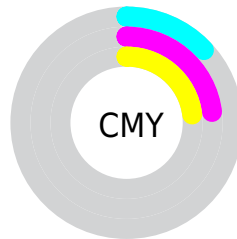
- Red (87%)
- Green (77%)
- Blue (77%)



- Red (87%)
- Yellow (77%)
- Blue (77%)



- Cyan (0%)
- Magenta (11%)
- Yellow (11%)
- Black (13%)



- Cyan (13%)
- Magenta (23%)
- Yellow (23%)

Brightness & Saturation Gradients

These gradients show how the Yxy color 59.4933, 0.3328, 0.3291 changes by changing the brightness by 10 percent. The first figure shows a shift by +10% for each color and the second figure -10%.

Similar to the brightness gradients but the following saturation gradients show a change of the Yxy color 59.4933, 0.3328, 0.3291 by changing the saturation by 10% instead.

■ 59.4933, 0.3328,
0.3291

■ 59.4933, 0.3328,
0.3291

422.7276, 0.3231,
0.3291

■ 43.0104, 0.3351,
0.3291

104.0943, 0.3294,
0.3291

■ 29.8932, 0.3380,
0.3290

132.9811, 0.3281,
0.3291

■ 19.7576, 0.3418,
0.3290

166.7713, 0.3269,
0.3291

■ 12.2189, 0.3469,
0.3288

205.8494, 0.3260,
0.3291

■ 6.8930, 0.3542,
0.3286

250.5996, 0.3251,
0.3291

■ 3.3953, 0.3654,
0.3281

301.4065, 0.3244,

■ 1.3414, 0.3848,

0.3291

358.6543, 0.3237,
0.3291

0.3269

0.1729, 0.6865,
0.3135

0.0000, 0.0000,
0.0000

59.4933, 0.3328,
0.3291

59.4933, 0.3328,
0.3291

49.2148, 0.3554,
0.3292

71.4067, 0.3147,
0.3290

40.4926, 0.3837,
0.3293

85.0137, 0.3003,
0.3289

33.2532, 0.4184,
0.3295

94.2670, 0.2929,
0.3289

27.4141, 0.4598,
0.3296

■ 22.8850, 0.5064,
0.3298

■ 19.5647, 0.5544,
0.3299

■ 17.3375, 0.5968,
0.3300

■ 16.0651, 0.6263,
0.3300

■ 15.5344, 0.6400,
0.3300

Harmonies

Analogous

The Analogous color harmony consists of three colors that are next to each other on the color wheel.



59.4933, 0.3236, 0.3190



59.4933, 0.3328, 0.3291



59.4933, 0.3365, 0.3393

Triad

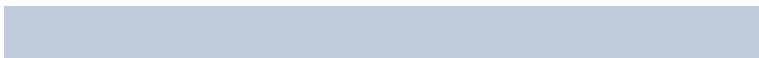
The Triadic color harmony groups three colors that are evenly spaced from another and form a triangle on the color wheel.



59.4933, 0.3328, 0.3291



59.4933, 0.3135, 0.3473



59.4933, 0.2921, 0.3108

Complementary

The Complementary color scheme is a pair of colors which are on the opposite of each other on the color wheel.



59.4933, 0.3328, 0.3291



69.3535, 0.2955, 0.3289

Split Complementary

Split-complementary colors differ from the complementary color scheme. The scheme consists of three colors, the original color and two neighbors of the complement color.



59.4933, 0.2895, 0.3180



59.4933, 0.3328, 0.3291



59.4933, 0.3017, 0.3393

Square

The Square scheme is like the rectangle color scheme, but the four colors are evenly spaced on the color wheel.



59.4933, 0.3328, 0.3291



59.4933, 0.3252, 0.3502



59.4933, 0.2930, 0.3284



59.4933, 0.3001, 0.3086

Rectangle

The Rectangle color scheme consists of four colors that form a rectangle on the color wheel.



59.4933, 0.3328, 0.3291



59.4933, 0.3353, 0.3450



59.4933, 0.2930, 0.3284



59.4933, 0.2905, 0.3127

Sweetspot

The Sweet Spot groups the original color and five complimentary colors.



59.4959, 0.3328, 0.3291



94.7400, 0.3176, 0.3290



60.7215, 0.3140, 0.3014



19.9850, 0.3190, 0.3290



0.0000, 0.0000, 0.0000



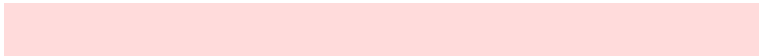
21.4041, 0.3127, 0.3290

Same Dimension

The Same Dimension uses a secret algorithm to generate beautiful new colors.



59.4959, 0.3328, 0.3291



77.2386, 0.3387, 0.3291



65.3937, 0.3311, 0.3431



13.7039, 0.3292, 0.3291



9.2301, 0.6400, 0.3301



0.6410, 0.6396, 0.3303

Inverse Universe

The Inverse Universe completely reimagines the original color for something new.



69.3535, 0.2955, 0.3289



93.8117, 0.2913, 0.3289



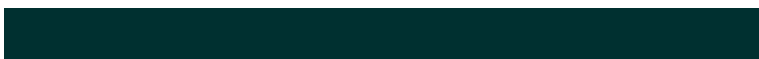
62.9767, 0.2953, 0.3145



15.5686, 0.2982, 0.3289



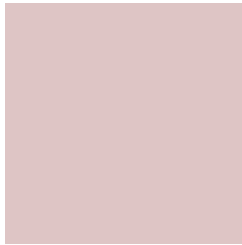
34.0580, 0.2245, 0.3283



2.3619, 0.2246, 0.3284

Previews

White Background



This preview shows how the Yxy color 59.4933, 0.3328, 0.3291 looks on a white background.

Color Contrast Check

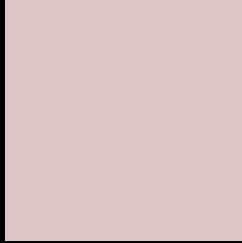
Large Text (above 18pt) WCAG AA × Fail

Any Text WCAG AA × Fail

Large Text (above 18pt) WCAG AAA × Fail

Any Text WCAG AAA × Fail

Black Background



This preview shows how the Yxy color 59.4933, 0.3328, 0.3291 looks on a black background.

Color Contrast Check

Large Text (above 18pt) WCAG AA ✓ Pass

Any Text WCAG AA ✓ Pass

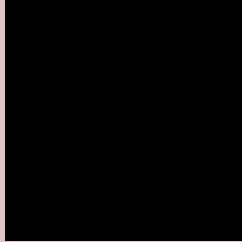
Large Text (above 18pt) WCAG AAA ✓ Pass

Any Text WCAG AAA ✓ Pass

If you want to check with other color combinations, try the [Color Contrast Checker](#).

Yxy 59.4933, 0.3328, 0.3291

Background



This preview shows how black text looks on a background with the Yxy color 59.4933, 0.3328, 0.3291.



This preview shows how white text looks on a background with the Yxy color 59.4933, 0.3328, 0.3291.

Color Blindness Simulation

Color vision deficiency is a very complex topic, and I could not describe the different causes any better than Wikipedia does, so if you want to learn more, you should check out their [article about color blindness](#).

Dichromacy



Original Color

59.4933, 0.3328, 0.3291

Protanopia

59.6766, 0.3180, 0.3314

Deuteranopia

59.3584, 0.3346, 0.3279



Tritanopia

59.5307, 0.3247, 0.3123

Trichromacy



Original Color

59.4933, 0.3328, 0.3291

Protanomaly

59.4291, 0.3229, 0.3302

Deuteranomaly

59.1990, 0.3337, 0.3279

Tritanomaly

59.5756, 0.3276, 0.3189

Monochromacy



Original Color

59.4933, 0.3328, 0.3291

Achromatopsia

60.3827, 0.3127, 0.3290

Achromatomaly

59.8392, 0.3205, 0.3290

CSS Examples

Text

The CSS property to change the color of the text to Yxy 59.4933, 0.3328, 0.3291 is called "color". The color property can be set on classes, ids or directly on the HTML element.

This example shows how text in the color `rgb(222, 197, 197)` looks like.

```
.text, #text, p{  
    color:rgb(222, 197, 197)  
}
```

If you want to add a text shadow in that color use the text-shadow property, you can generate a text shadow directly with our [CSS Text Shadow Generator](#).

Here you see how black text with a 4 pixel rgb(222, 197, 197) colored shadow looks like.

```
.shadow{ text-shadow: 4px 4px 2px rgb(222, 197, 197) }
```

Border

The CSS property to change the border of an element to Yxy 59.4933, 0.3328, 0.3291 is called "border". The border property can be set on classes, ids or directly on the HTML element.

This example shows the color as border, it can be applied via the CSS property "border" or "border-color".

```
.border, #border, table{ border:4px solid rgb(222, 197, 197) }
```

If only the border color should be changed use the property `border-color`.

```
.border{ border-color:rgb(222, 197, 197) }
```

If you want to add a box shadow in that color use:

Here you see how a box with a 4 pixel `rgb(222, 197, 197)` colored shadow looks like.

```
.boxshadow{ -moz-box-shadow:4px 4px 4px 4px rgb(222, 197, 197); -webkit-box-shadow:4px 4px 4px 4px rgb(222, 197, 197); box-shadow:4px 4px 4px 4px rgb(222, 197, 197) }
```


Background

The CSS property to change the background color of an element to Yxy 59.4933, 0.3328, 0.3291 is called "background". The background property can be set on classes, ids or directly on the HTML element.

```
.background, #background, body{  
background: rgb(222, 197, 197) }
```

If only the background color should be changed can be used:

```
.background{ background-color: rgb(222,  
197, 197) }
```

This example shows the color as background, it is applied via the CSS property "background".

To optimize and compress your CSS code, you can use our [online CSS compressor and optimizer](#) based on csstidy. If you want to create a linear or radial gradient as background or border, check our [CSS Gradient Generator](#).

Hey! You found this booklet interesting? Support Converting Colors with the new Membership Option!

The pro membership hides all ads, plus gives you double the colors in the color bucket, and more awesome pro features!

[Learn more, Memberships starting at \\$2.50/m!](#)

**Follow me
on Twitter!**

@ConvertingColor