

Converting Colors

$Y_{xy}(59.6341, 0.3370, 0.3291)$

Have a look what the booklet for
Yxy(59.6341, 0.3370, 0.3291)
contains.

Yxy(59.6341, 0.3370, 0.3291)	3
Conversions	4
Details	6
Harmonies	12
Previews	24
Color Blindness Simulation	27
CSS Examples	30

Color

Yxy(59.6341, 0.3370, 0.3291)

Conversions

Conversions Part 1

Format	Color
Hex	E2C4C4
RGB	226, 196, 196
RGB Percent	89%, 77%, 77%
CMY	0.1137, 0.2313, 0.2315
CMYK	0.00, 0.13, 0.13, 0.11
HSL	0°, 34%, 83%
HSV	0°, 13%, 89%
XYZ	61.0656, 59.6341, 60.5039
YIQ	204.9700, 17.8800, 6.3600

Conversions

Conversions Part 2

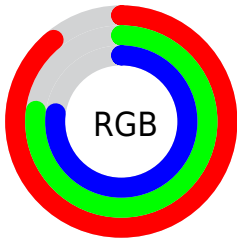
Format	Color
R _Y B	226, 196, 196
Decimal	14861508
CIE Lab	81.64, 10.59, 3.92
CIE LCh	82, 11.286, 20.306
Yxy	59.6341, 0.3370, 0.3291
Android (android.graphics.Color)	4293051588 (0xFFE2C4C4)
YUV	204.9700, -4.4222, 18.4433
Hunter-Lab	77.2231, 6.0117, 7.6028

Details

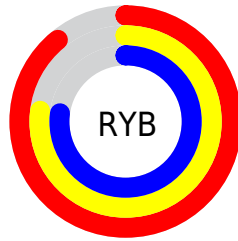
The Yxy color **59.6341, 0.3370, 0.3291** is a light color, and the websafe version is hex **FFCCCC**. A complement of this color would be **71.6017, 0.2925, 0.3289**, and the grayscale version is **61.0512, 0.3127, 0.3290**.

A 20% lighter version of the original color is **98.6024, 0.3140, 0.3290**, and **29.8450, 0.3433, 0.3291** is the 20% darker color. If you saturate the color by 10%, you get **49.2524, 0.3607, 0.3292**, and if you desaturate by 10%, it is **71.7089, 0.3181, 0.3290**.

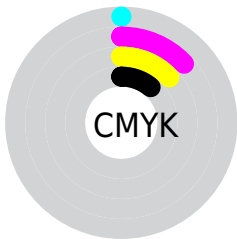
Distribution



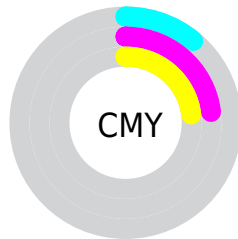
- Red (89%)
- Green (77%)
- Blue (77%)



- Red (89%)
- Yellow (77%)
- Blue (77%)



- Cyan (0%)
- Magenta (13%)
- Yellow (13%)
- Black (11%)




- Cyan (11%)
- Magenta (23%)
- Yellow (23%)

Brightness & Saturation Gradients


These gradients show how the Yxy color 59.6341, 0.3370, 0.3291 changes by changing the brightness by 10 percent. The first figure shows a shift by +10% for each color and the second figure -10%.


Similar to the brightness gradients but the following saturation gradients show a change of the Yxy color 59.6341, 0.3370, 0.3291 by changing the saturation by 10% instead.

 59.6341, 0.3370,
0.3291

 59.6341, 0.3370,
0.3291


423.2478, 0.3253,
0.3292

 43.1238, 0.3398,
0.3291


 104.2987, 0.3328,
0.3291

 29.9822, 0.3433,
0.3290

133.2218, 0.3313,
0.3292

 19.8251, 0.3479,
0.3289


167.0512, 0.3299,
0.3292

 12.2680, 0.3541,
0.3287

206.1714, 0.3287,
0.3292

 6.9265, 0.3629,
0.3283

250.9668, 0.3277,
0.3292

 3.4161, 0.3764,
0.3276

301.8217, 0.3268,

 1.3527, 0.3998,

0.3292

0.3259

359.1206, 0.3260,
0.3292

0.1814, 0.7037,
0.2963

0.0000, 0.0000,
0.0000

59.6341, 0.3370,
0.3291

59.6341, 0.3370,
0.3291

49.2524, 0.3607,
0.3292

71.7089, 0.3181,
0.3290

40.4808, 0.3903,
0.3293

85.5394, 0.3029,
0.3290

33.2410, 0.4264,
0.3294

94.9087, 0.2952,
0.3289

27.4452, 0.4691,
0.3296

■ 22.9967, 0.5166,
0.3297

■ 19.7869, 0.5640,
0.3299

■ 17.6906, 0.6044,
0.3300

■ 16.5561, 0.6304,
0.3300

■ 16.1733, 0.6400,
0.3300

Harmonies

Analogous

The Analogous color harmony consists of three colors that are next to each other on the color wheel.



59.6341, 0.3259, 0.3171



59.6341, 0.3370, 0.3291



59.6341, 0.3415, 0.3414

Triad

The Triadic color harmony groups three colors that are evenly spaced from another and form a triangle on the color wheel.



59.6341, 0.3370, 0.3291



59.6341, 0.3135, 0.3512



59.6341, 0.2879, 0.3070

Complementary

The Complementary color scheme is a pair of colors which are on the opposite of each other on the color wheel.



59.6341, 0.3370, 0.3291



71.6017, 0.2925, 0.3289

Split Complementary

Split-complementary colors differ from the complementary color scheme. The scheme consists of three colors, the original color and two neighbors of the complement color.



59.6341, 0.2848, 0.3156



59.6341, 0.3370, 0.3291



59.6341, 0.2994, 0.3414

Square

The Square scheme is like the rectangle color scheme, but the four colors are evenly spaced on the color wheel.



59.6341, 0.3370, 0.3291



59.6341, 0.3277, 0.3546



59.6341, 0.2890, 0.3282



59.6341, 0.2975, 0.3044

Rectangle

The Rectangle color scheme consists of four colors that form a rectangle on the color wheel.



59.6341, 0.3370, 0.3291



59.6341, 0.3400, 0.3482



59.6341, 0.2890, 0.3282



59.6341, 0.2861, 0.3093

Sweetspot

The Sweet Spot groups the original color and five complimentary colors.



59.6368, 0.3370, 0.3291



93.0299, 0.3193, 0.3290



61.1306, 0.3142, 0.2963



19.6406, 0.3206, 0.3290



0.0000, 0.0000, 0.0000



21.4041, 0.3127, 0.3290

Same Dimension

The Same Dimension uses a secret algorithm to generate beautiful new colors.



59.6368, 0.3370, 0.3291



74.3388, 0.3432, 0.3291



66.7370, 0.3347, 0.3457



13.7026, 0.3292, 0.3291



9.2278, 0.6400, 0.3300



0.6403, 0.6398, 0.3302

Inverse Universe

The Inverse Universe completely reimagines the original color for something new.



71.6017, 0.2925, 0.3289



93.0422, 0.2884, 0.3289



63.8077, 0.2920, 0.3117



15.5701, 0.2982, 0.3289



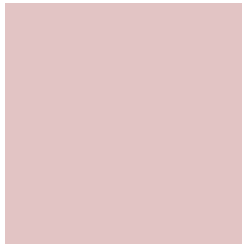
34.1000, 0.2246, 0.3285



2.3643, 0.2246, 0.3285

Previews

White Background



This preview shows how the Yxy color 59.6341, 0.3370, 0.3291 looks on a white background.

Color Contrast Check

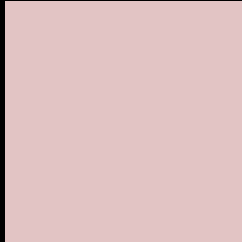
Large Text (above 18pt) WCAG AA × Fail

Any Text WCAG AA × Fail

Large Text (above 18pt) WCAG AAA × Fail

Any Text WCAG AAA × Fail

Black Background



This preview shows how the Yxy color 59.6341, 0.3370, 0.3291 looks on a black background.

Color Contrast Check

Large Text (above 18pt) WCAG AA ✓ Pass

Any Text WCAG AA ✓ Pass

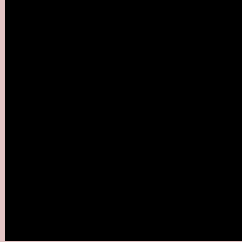
Large Text (above 18pt) WCAG AAA ✓ Pass

Any Text WCAG AAA ✓ Pass

If you want to check with other color combinations, try the [Color Contrast Checker](#).

Yxy 59.6341, 0.3370, 0.3291

Background



This preview shows how black text looks on a background with the Yxy color 59.6341, 0.3370, 0.3291.



This preview shows how white text looks on a background with the Yxy color 59.6341, 0.3370, 0.3291.

Color Blindness Simulation

Color vision deficiency is a very complex topic, and I could not describe the different causes any better than Wikipedia does, so if you want to learn more, you should check out their [article about color blindness](#).

Dichromacy



Original Color

59.6341, 0.3370, 0.3291

Protanopia

59.6300, 0.3188, 0.3325

Deuteranopia

59.4729, 0.3362, 0.3291



Tritanopia

59.6810, 0.3288, 0.3125

Trichromacy



Original Color

59.6341, 0.3370, 0.3291

Protanomaly

59.6819, 0.3252, 0.3313

Deuteranomaly

59.4729, 0.3362, 0.3291

Tritanomaly

59.7207, 0.3317, 0.3190

Monochromacy



Original Color

59.6341, 0.3370, 0.3291

Achromatopsia

61.0496, 0.3127, 0.3290

Achromatomaly

60.6515, 0.3213, 0.3290

CSS Examples

Text

The CSS property to change the color of the text to Yxy 59.6341, 0.3370, 0.3291 is called "color". The color property can be set on classes, ids or directly on the HTML element.

This example shows how text in the color `rgb(226, 196, 196)` looks like.

```
.text, #text, p{  
    color:rgb(226, 196, 196)  
}
```

If you want to add a text shadow in that color use the text-shadow property, you can generate a text shadow directly with our [CSS Text Shadow Generator](#).

Here you see how black text with a 4 pixel rgb(226, 196, 196) colored shadow looks like.

```
.shadow{ text-shadow: 4px 4px 2px rgb(226, 196, 196) }
```

Border

The CSS property to change the border of an element to Yxy 59.6341, 0.3370, 0.3291 is called "border". The border property can be set on classes, ids or directly on the HTML element.

This example shows the color as border, it can be applied via the CSS property "border" or "border-color".

```
.border, #border, table{ border:4px solid rgb(226, 196, 196) }
```

If only the border color should be changed use the property `border-color`.

```
.border{ border-color:rgb(226, 196, 196) }
```

If you want to add a box shadow in that color use:

Here you see how a box with a 4 pixel `rgb(226, 196, 196)` colored shadow looks like.

```
.boxshadow{ -moz-box-shadow:4px 4px 4px  
4px rgb(226, 196, 196); -webkit-box-  
shadow:4px 4px 4px 4px rgb(226, 196, 196);  
box-shadow:4px 4px 4px 4px rgb(226, 196,  
196) }
```


Background

The CSS property to change the background color of an element to Yxy 59.6341, 0.3370, 0.3291 is called "background". The background property can be set on classes, ids or directly on the HTML element.

```
.background, #background, body{  
background: rgb(226, 196, 196) }
```

If only the background color should be changed can be used:

```
.background{ background-color: rgb(226,  
196, 196) }
```

This example shows the color as background, it is applied via the CSS property "background".

To optimize and compress your CSS code, you can use our [online CSS compressor and optimizer](#) based on csstidy. If you want to create a linear or radial gradient as background or border, check our [CSS Gradient Generator](#).

Hey! You found this booklet interesting? Support Converting Colors with the new Membership Option!

The pro membership hides all ads, plus gives you double the colors in the color bucket, and more awesome pro features!

[Learn more, Memberships starting at \\$2.50/m!](#)

**Follow me
on Twitter!**

@ConvertingColor