

Converting Colors

$Y_{xy}(59.7710, 0.3222, 0.3170)$

Have a look what the booklet for
Yxy(59.7710, 0.3222, 0.3170)
contains.

Yxy(59.5466, 0.3220, 0.3166)	3
Conversions	4
Details	6
Harmonies	12
Previews	24
Color Blindness Simulation	27
CSS Examples	30

Color

Yxy(59.5466, 0.3220, 0.3166)

Conversions

Conversions Part 1

Format	Color
Hex	DBC5D0
RGB	219, 197, 208
RGB Percent	86%, 77%, 82%
CMY	0.1412, 0.2274, 0.1843
CMYK	0.00, 0.10, 0.05, 0.14
HSL	330°, 23%, 82%
HSV	330°, 10%, 86%
XYZ	60.5622, 59.5466, 67.9727
YIQ	204.8320, 9.5810, 8.0850

Conversions

Conversions Part 2

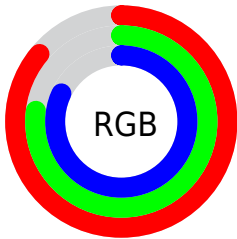
Format	Color
R _Y B	219, 197, 208
Decimal	14403024
CIE Lab	81.59, 9.60, -2.67
CIE LCh	82, 9.967, 344.457
Yxy	59.5466, 0.3220, 0.3166
Android (android.graphics.Color)	4292593104 (0xFFDBC5D0)
YUV	204.8320, 1.5618, 12.4253
Hunter-Lab	77.1664, 5.0502, 1.7905

Details

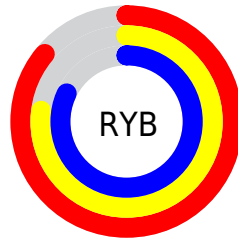
The Yxy color **59.5466, 0.3220, 0.3166** is a light color, and the websafe version is hex **CCCCCC**. A complement of this color would be **67.0847, 0.3043, 0.3417**, and the grayscale version is **60.9241, 0.3127, 0.3290**.

A 20% lighter version of the original color is **99.3636, 0.3128, 0.3281**, and **29.8705, 0.3241, 0.3126** is the 20% darker color. If you saturate the color by 10%, you get **49.7946, 0.3332, 0.3036**, and if you desaturate by 10%, it is **70.7857, 0.3127, 0.3290**.

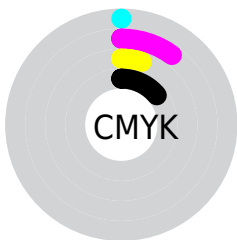
Distribution



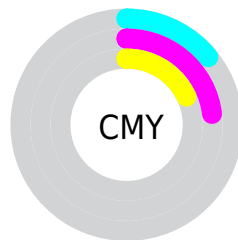
- Red (86%)
- Green (77%)
- Blue (82%)



- Red (86%)
- Yellow (77%)
- Blue (82%)



- Cyan (0%)
- Magenta (10%)
- Yellow (5%)
- Black (14%)



- Cyan (14%)
- Magenta (23%)
- Yellow (18%)

Brightness & Saturation Gradients

These gradients show how the Yxy color 59.5466, 0.3220, 0.3166 changes by changing the brightness by 10 percent. The first figure shows a shift by +10% for each color and the second figure -10%.

Similar to the brightness gradients but the following saturation gradients show a change of the Yxy color 59.5466, 0.3220, 0.3166 by changing the saturation by 10% instead.

■ 59.5466, 0.3220,
0.3166

■ 59.5466, 0.3220,
0.3166

422.9245, 0.3176,
0.3225

■ 43.0533, 0.3230,
0.3152

104.1717, 0.3204,
0.3187

■ 29.9269, 0.3244,
0.3135

133.0722, 0.3198,
0.3195

■ 19.7831, 0.3260,
0.3112

166.8773, 0.3193,
0.3202

■ 12.2375, 0.3283,
0.3082

205.9713, 0.3189,
0.3208

■ 6.9056, 0.3315,
0.3041

250.7386, 0.3185,
0.3213

■ 3.4032, 0.3363,
0.2977

301.5637, 0.3182,

■ 1.3457, 0.3445,

0.3217

0.2872

358.8309, 0.3179,
0.3221

0.1761, 0.4201,
0.1842

0.0000, 0.0000,
0.0000

59.5466, 0.3220,
0.3166

59.5466, 0.3220,
0.3166

49.7946, 0.3332,
0.3036

70.7857, 0.3127,
0.3290

41.4591, 0.3465,
0.2902

83.5631, 0.3051,
0.3405

34.4755, 0.3624,
0.2769

92.9212, 0.2988,
0.3435

28.7710, 0.3809,
0.2645

93.5952, 0.2928,
0.3322

■ 24.2659, 0.4020,
0.2539

■ 93.7988, 0.2911,
0.3289

■ 20.8714, 0.4253,
0.2463

■ 18.4863, 0.4499,
0.2431

■ 16.9905, 0.4747,
0.2451

■ 16.1727, 0.4984,
0.2519

Harmonies

Analogous

The Analogous color harmony consists of three colors that are next to each other on the color wheel.



59.5466, 0.3090, 0.3095



59.5466, 0.3220, 0.3166



59.5466, 0.3326, 0.3269

Triad

The Triadic color harmony groups three colors that are evenly spaced from another and form a triangle on the color wheel.



59.5466, 0.3220, 0.3166



59.5466, 0.3281, 0.3514



59.5466, 0.2882, 0.3192

Complementary

The Complementary color scheme is a pair of colors which are on the opposite of each other on the color wheel.



59.5466, 0.3220, 0.3166



67.0847, 0.3043, 0.3417

Split Complementary

Split-complementary colors differ from the complementary color scheme. The scheme consists of three colors, the original color and two neighbors of the complement color.



59.5466, 0.2931, 0.3306



59.5466, 0.3220, 0.3166



59.5466, 0.3160, 0.3496

Square

The Square scheme is like the rectangle color scheme, but the four colors are evenly spaced on the color wheel.



59.5466, 0.3220, 0.3166



59.5466, 0.3362, 0.3470



59.5466, 0.3032, 0.3419



59.5466, 0.2897, 0.3107

Rectangle

The Rectangle color scheme consists of four colors that form a rectangle on the color wheel.



59.5466, 0.3220, 0.3166



59.5466, 0.3369, 0.3344



59.5466, 0.3032, 0.3419



59.5466, 0.2892, 0.3228

Sweetspot

The Sweet Spot groups the original color and five complimentary colors.



59.5492, 0.3220, 0.3166



94.9718, 0.3153, 0.3253



58.4605, 0.3054, 0.3038



20.0474, 0.3161, 0.3244



0.0000, 0.0000, 0.0000



21.4041, 0.3127, 0.3290

Same Dimension

The Same Dimension uses a secret algorithm to generate beautiful new colors.



59.5492, 0.3220, 0.3166



81.0597, 0.3241, 0.3140



59.0270, 0.3303, 0.3291



13.1595, 0.3214, 0.3174



9.6125, 0.4950, 0.2501



0.6401, 0.4591, 0.2303

Inverse Universe

The Inverse Universe completely reimagines the original color for something new.



59.5492, 0.3220, 0.3166



81.0597, 0.3241, 0.3140



67.6445, 0.2973, 0.3290



13.1595, 0.3214, 0.3174



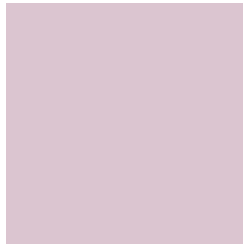
9.6125, 0.4950, 0.2501



0.6401, 0.4591, 0.2303

Previews

White Background



This preview shows how the Yxy color 59.5466, 0.3220, 0.3166 looks on a white background.

Color Contrast Check

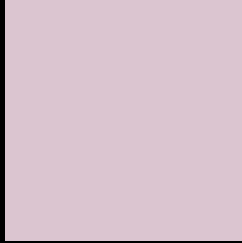
Large Text (above 18pt) WCAG AA × Fail

Any Text WCAG AA × Fail

Large Text (above 18pt) WCAG AAA × Fail

Any Text WCAG AAA × Fail

Black Background



This preview shows how the Yxy color 59.5466, 0.3220, 0.3166 looks on a black background.

Color Contrast Check

Large Text (above 18pt) WCAG AA ✓ Pass

Any Text WCAG AA ✓ Pass

Large Text (above 18pt) WCAG AAA ✓ Pass

Any Text WCAG AAA ✓ Pass

If you want to check with other color combinations, try the [Color Contrast Checker](#).

Yxy 59.5466, 0.3220, 0.3166

Background



This preview shows how black text looks on a background with the Yxy color 59.5466, 0.3220, 0.3166.



This preview shows how white text looks on a background with the Yxy color 59.5466, 0.3220, 0.3166.

Color Blindness Simulation

Color vision deficiency is a very complex topic, and I could not describe the different causes any better than Wikipedia does, so if you want to learn more, you should check out their [article about color blindness](#).

Dichromacy



Original Color

59.5466, 0.3220, 0.3166

Protanopia

59.7816, 0.3079, 0.3185

Deuteranopia

59.7022, 0.3228, 0.3166



Tritanopia

59.4490, 0.3199, 0.3110

Trichromacy



Original Color

59.5466, 0.3220, 0.3166

Protanomaly

59.5170, 0.3125, 0.3175

Deuteranomaly

59.7022, 0.3228, 0.3166

Tritanomaly

59.3986, 0.3206, 0.3121

Monochromacy



Original Color

59.5466, 0.3220, 0.3166

Achromatopsia

61.0496, 0.3127, 0.3290

Achromatomaly

60.3989, 0.3160, 0.3244

CSS Examples

Text

The CSS property to change the color of the text to Yxy 59.5466, 0.3220, 0.3166 is called "color". The color property can be set on classes, ids or directly on the HTML element.

This example shows how text in the color `rgb(219, 197, 208)` looks like.

```
.text, #text, p{  
    color:rgb(219, 197, 208)  
}
```

If you want to add a text shadow in that color use the text-shadow property, you can generate a text shadow directly with our [CSS Text Shadow Generator](#).

Here you see how black text with a 4 pixel rgb(219, 197, 208) colored shadow looks like.

```
.shadow{ text-shadow: 4px 4px 2px rgb(219, 197, 208) }
```

Border

The CSS property to change the border of an element to Yxy 59.5466, 0.3220, 0.3166 is called "border". The border property can be set on classes, ids or directly on the HTML element.

This example shows the color as border, it can be applied via the CSS property "border" or "border-color".

```
.border, #border, table{ border:4px solid rgb(219, 197, 208) }
```

If only the border color should be changed use the property `border-color`.

```
.border{ border-color:rgb(219, 197, 208) }
```

If you want to add a box shadow in that color use:

Here you see how a box with a 4 pixel `rgb(219, 197, 208)` colored shadow looks like.

```
.boxshadow{ -moz-box-shadow:4px 4px 4px 4px rgb(219, 197, 208); -webkit-box-shadow:4px 4px 4px 4px rgb(219, 197, 208); box-shadow:4px 4px 4px 4px rgb(219, 197, 208) }
```


Background

The CSS property to change the background color of an element to Yxy 59.5466, 0.3220, 0.3166 is called "background". The background property can be set on classes, ids or directly on the HTML element.

```
.background, #background, body{  
background: rgb(219, 197, 208) }
```

If only the background color should be changed can be used:

```
.background{ background-color: rgb(219,  
197, 208) }
```

This example shows the color as background, it is applied via the CSS property "background".

To optimize and compress your CSS code, you can use our [online CSS compressor and optimizer](#) based on csstidy. If you want to create a linear or radial gradient as background or border, check our [CSS Gradient Generator](#).

Hey! You found this booklet interesting? Support Converting Colors with the new Membership Option!

The pro membership hides all ads, plus gives you double the colors in the color bucket, and more awesome pro features!

[Learn more, Memberships starting at \\$2.50/m!](#)

**Follow me
on Twitter!**

@ConvertingColor