

# Converting Colors

$Yxy(59.8301, 0.3465, 0.3508)$

Have a look what the booklet for  
Yxy(59.8301, 0.3465, 0.3508)  
contains.

<b>Yxy(59.8301, 0.3465, 0.3508)</b> .....	3
<b>Conversions</b> .....	4
<b>Details</b> .....	6
<b>Harmonies</b> .....	12
<b>Previews</b> .....	24
<b>Color Blindness Simulation</b> .....	27
<b>CSS Examples</b> .....	30

# Color

**Yxy(59.8301, 0.3465, 0.3508)**

# Conversions

## Conversions Part 1

Format	Color
Hex	DFC7B4
RGB	223, 199, 180
RGB Percent	87%, 78%, 71%
CMY	0.1255, 0.2196, 0.2940
CMYK	0.00, 0.11, 0.19, 0.13
HSL	26°, 40%, 79%
HSV	26°, 19%, 87%
XYZ	59.0967, 59.8301, 51.6265
YIQ	204.0100, 20.4030, -0.8210

# Conversions

## Conversions Part 2

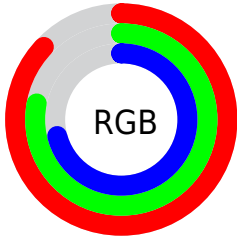
<b>Format</b>	<b>Color</b>
R <sub>Y</sub> B	223, 214, 180
Decimal	14665652
CIE Lab	81.75, 5.44, 12.57
CIE LCh	82, 13.697, 66.613
Yxy	59.8301, 0.3465, 0.3508
Android (android.graphics.Color)	4292855732 (0xFFDFC7B4)
YUV	204.0100, -11.8369, 16.6542
Hunter-Lab	77.3499, 1.0148, 14.5724

# Details

The Yxy color  $59.8301, 0.3465, 0.3508$  is a light color, and the websafe version is hex `CCCCCC`. A complement of this color would be  $58.2358, 0.2826, 0.3062$ , and the grayscale version is  $60.4597, 0.3127, 0.3290$ .

A 20% lighter version of the original color is  $98.8361, 0.3238, 0.3473$ , and  $29.9986, 0.3551, 0.3563$  is the 20% darker color. If you saturate the color by 10%, you get  $53.4963, 0.3680, 0.3628$ , and if you desaturate by 10%, it is  $66.7847, 0.3278, 0.3392$ .

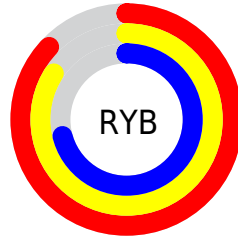
# Distribution



Red (87%)

Green (78%)

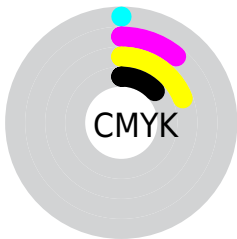
Blue (71%)



Red (87%)

Yellow (84%)

Blue (71%)

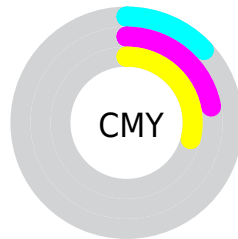


Cyan (0%)

Magenta (11%)

Yellow (19%)

Black (13%)



Cyan (13%)

Magenta (22%)


Yellow (29%)


# Brightness & Saturation Gradients

These gradients show how the Yxy color 59.8301, 0.3465, 0.3508 changes by changing the brightness by 10 percent. The first figure shows a shift by +10% for each color and the second figure -10%.


Similar to the brightness gradients but the following saturation gradients show a change of the Yxy color 59.8301, 0.3465, 0.3508 by changing the saturation by 10% instead.





 59.8301, 0.3465,  
0.3508

 59.8301, 0.3465,  
0.3508


423.9712, 0.3302,  
0.3405

 43.2817, 0.3504,  
0.3532


 104.5832, 0.3407,  
0.3472

 30.1062, 0.3553,  
0.3562


133.5566, 0.3385,  
0.3458

 19.9192, 0.3616,  
0.3599

167.4406, 0.3366,  
0.3446

 12.3363, 0.3701,  
0.3649

206.6194, 0.3350,  
0.3436

 6.9732, 0.3821,  
0.3717

251.4775, 0.3336,  
0.3427

 3.4453, 0.4002,  
0.3816

302.3992, 0.3323,

 1.3684, 0.4382,

0.3419

0.4035

359.7690, 0.3312,  
0.3412

0.1933, 0.6208,  
0.3792

0.0000, 0.0000,  
0.0000

59.8301, 0.3465,  
0.3508

59.8301, 0.3465,  
0.3508

53.4963, 0.3680,  
0.3628

66.7847, 0.3278,  
0.3392

47.7571, 0.3924,  
0.3748

74.3694, 0.3116,  
0.3282

42.5960, 0.4195,  
0.3861

82.6033, 0.2977,  
0.3180

37.9927, 0.4488,  
0.3957

90.5518, 0.2933,  
0.3227

■ 33.9253, 0.4793,  
0.4025

■ 94.4293, 0.2935,  
0.3289

■ 30.3703, 0.5090,  
0.4049

■ 27.3014, 0.5358,  
0.4022

■ 24.6838, 0.5582,  
0.3944

■ 24.5091, 0.5598,  
0.3937

# Harmonies

## Analogous

The Analogous color harmony consists of three colors that are next to each other on the color wheel.



59.8301, 0.3463, 0.3373



59.8301, 0.3465, 0.3508



59.8301, 0.3374, 0.3590

# Triad

The Triadic color harmony groups three colors that are evenly spaced from another and form a triangle on the color wheel.



59.8301, 0.3465, 0.3508



59.8301, 0.2889, 0.3355



59.8301, 0.3030, 0.3009

# Complementary

The Complementary color scheme is a pair of colors which are on the opposite of each other on the color wheel.



59.8301, 0.3465, 0.3508



58.2358, 0.2826, 0.3062

# Split Complementary

Split-complementary colors differ from the complementary color scheme. The scheme consists of three colors, the original color and two neighbors of the complement color.



59.8301, 0.2882, 0.2998



59.8301, 0.3465, 0.3508



59.8301, 0.2802, 0.3192

# Square

The Square scheme is like the rectangle color scheme, but the four colors are evenly spaced on the color wheel.



59.8301, 0.3465, 0.3508



59.8301, 0.3040, 0.3503



59.8301, 0.2800, 0.3063



59.8301, 0.3208, 0.3090



# Rectangle

The Rectangle color scheme consists of four colors that form a rectangle on the color wheel.



59.8301, 0.3465, 0.3508



59.8301, 0.3274, 0.3600



59.8301, 0.2800, 0.3063



59.8301, 0.2975, 0.2997

# Sweetspot

The Sweet Spot groups the original color and five complimentary colors.



59.8328, 0.3465, 0.3508



93.7218, 0.3223, 0.3356



52.7201, 0.3299, 0.3014



19.9181, 0.3234, 0.3363



0.0000, 0.0000, 0.0000



21.4041, 0.3127, 0.3290



# Same Dimension

The Same Dimension uses a secret algorithm to generate beautiful new colors.



59.8328, 0.3465, 0.3508



77.6326, 0.3545, 0.3555



70.2468, 0.3422, 0.3738



14.6914, 0.3281, 0.3394



14.6271, 0.5572, 0.3958



1.1901, 0.5308, 0.4168

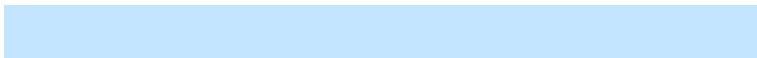


# Inverse Universe

The Inverse Universe completely reimagines the original color for something new.



58.2358, 0.2826, 0.3062



75.1012, 0.2763, 0.3010



48.8566, 0.2810, 0.2799



14.5068, 0.2981, 0.3184



11.9194, 0.1829, 0.1783

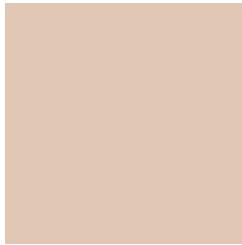


1.0038, 0.1899, 0.2036



# Previews

## White Background



This preview shows how the Yxy color 59.8301, 0.3465, 0.3508 looks on a white background.

## Color Contrast Check

Large Text (above 18pt) WCAG AA × Fail

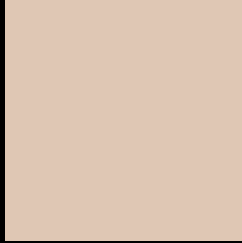
Any Text WCAG AA × Fail

Large Text (above 18pt) WCAG AAA × Fail

Any Text WCAG AAA × Fail



# Black Background



This preview shows how the Yxy color 59.8301, 0.3465, 0.3508 looks on a black background.

## Color Contrast Check

Large Text (above 18pt) WCAG AA ✓ Pass

Any Text WCAG AA ✓ Pass

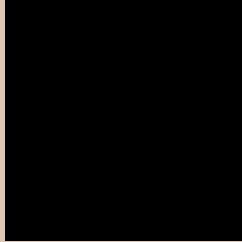
Large Text (above 18pt) WCAG AAA ✓ Pass

Any Text WCAG AAA ✓ Pass

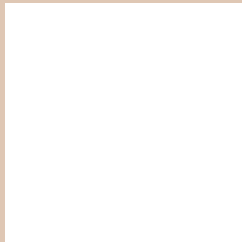
If you want to check with other color combinations, try the [Color Contrast Checker](#).

**Yxy 59.8301, 0.3465, 0.3508**

## **Background**



This preview shows how black text looks on a background with the Yxy color 59.8301, 0.3465, 0.3508.



This preview shows how white text looks on a background with the Yxy color 59.8301, 0.3465, 0.3508.

# Color Blindness Simulation

Color vision deficiency is a very complex topic, and I could not describe the different causes any better than Wikipedia does, so if you want to learn more, you should check out their [article about color blindness](#).

## Dichromacy



### Original Color

59.8301, 0.3465, 0.3508

### Protanopia

60.0863, 0.3352, 0.3537

### Deuteranopia

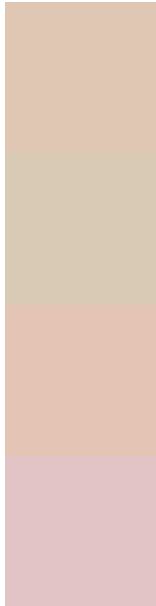
59.8050, 0.3530, 0.3459



## Tritanopia

60.0143, 0.3271, 0.3124

# Trichromacy



**Original Color**

59.8301, 0.3465, 0.3508

**Protanomaly**

60.1762, 0.3394, 0.3535

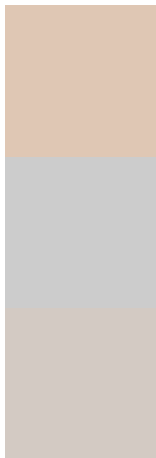
**Deuteranomaly**

59.7627, 0.3503, 0.3472

**Tritanomaly**

59.7721, 0.3346, 0.3257

# Monochromacy



**Original Color**

59.8301, 0.3465, 0.3508

**Achromatopsia**

60.3827, 0.3127, 0.3290

**Achromatomaly**

60.0301, 0.3249, 0.3372

# CSS Examples

## Text

The CSS property to change the color of the text to Yxy 59.8301, 0.3465, 0.3508 is called "color". The color property can be set on classes, ids or directly on the HTML element.

This example shows how text in the color `rgb(223, 199, 180)` looks like.

```
.text, #text, p{  
    color:rgb(223, 199, 180)  
}
```

If you want to add a text shadow in that color use the text-shadow property, you can generate a text shadow directly with our [CSS Text Shadow Generator](#).

Here you see how black text with a 4 pixel rgb(223, 199, 180) colored shadow looks like.

```
.shadow{ text-shadow: 4px 4px 2px rgb(223, 199, 180) }
```

## Border

The CSS property to change the border of an element to Yxy 59.8301, 0.3465, 0.3508 is called "border". The border property can be set on classes, ids or directly on the HTML element.

This example shows the color as border, it can be applied via the CSS property "border" or "border-color".

```
.border, #border, table{ border:4px solid rgb(223, 199, 180) }
```

If only the border color should be changed use the property `border-color`.

```
.border{ border-color:rgb(223, 199, 180) }
```

If you want to add a box shadow in that color use:

Here you see how a box with a 4 pixel `rgb(223, 199, 180)` colored shadow looks like.

```
.boxshadow{ -moz-box-shadow:4px 4px 4px  
4px rgb(223, 199, 180); -webkit-box-  
shadow:4px 4px 4px 4px rgb(223, 199, 180);  
box-shadow:4px 4px 4px 4px rgb(223, 199,  
180) }
```



# Background

The CSS property to change the background color of an element to Yxy 59.8301, 0.3465, 0.3508 is called "background". The background property can be set on classes, ids or directly on the HTML element.

```
.background, #background, body{  
background: rgb(223, 199, 180) }
```

If only the background color should be changed can be used:

```
.background{ background-color: rgb(223,  
199, 180) }
```

This example shows the color as background, it is applied via the CSS property "background".

To optimize and compress your CSS code, you can use our [online CSS compressor and optimizer](#) based on csstidy. If you want to create a linear or radial gradient as background or border, check our [CSS Gradient Generator](#).

Hey! You found this booklet interesting? Support Converting Colors with the new Membership Option!

The pro membership hides all ads, plus gives you double the colors in the color bucket, and more awesome pro features!

**[Learn more, Memberships starting at \\$2.50/m!](#)**

**Follow me  
on Twitter!**

@ConvertingColor