

Converting Colors

$Yxy(60.0283, 0.3367, 0.3316)$

Have a look what the booklet for
Yxy(60.0283, 0.3367, 0.3316)
contains.

Yxy(59.8802, 0.3368, 0.3313)	3
<i>Conversions</i>	4
<i>Details</i>	6
<i>Harmonies</i>	12
<i>Previews</i>	24
<i>Color Blindness Simulation</i>	27
<i>CSS Examples</i>	30

Color

Yxy(59.8802, 0.3368, 0.3313)

Conversions

Conversions Part 1

Format	Color
Hex	E1C5C3
RGB	225, 197, 195
RGB Percent	88%, 77%, 76%
CMY	0.1176, 0.2275, 0.2352
CMYK	0.00, 0.12, 0.13, 0.12
HSL	4°, 33%, 82%
HSV	4°, 13%, 88%
XYZ	60.8743, 59.8802, 59.9886
YIQ	205.1440, 17.3300, 5.3140

Conversions

Conversions Part 2

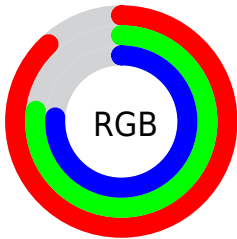
Format	Color
R _Y B	225, 197, 195
Decimal	14796227
CIE Lab	81.77, 9.56, 4.62
CIE LCh	82, 10.612, 25.783
Yxy	59.8802, 0.3368, 0.3313
Android (android.graphics.Color)	4292986307 (0xFFE1C5C3)
YUV	205.1440, -5.0010, 17.4137
Hunter-Lab	77.3823, 5.0015, 8.2046

Details

The Yxy color **59.8802, 0.3368, 0.3313** is a light color, and the websafe version is hex **FFCCCC**. A complement of this color would be **69.8401, 0.2924, 0.3267**, and the grayscale version is **61.1743, 0.3127, 0.3290**.

A 20% lighter version of the original color is **99.1719, 0.3145, 0.3309**, and **30.0030, 0.3430, 0.3321** is the 20% darker color. If you saturate the color by 10%, you get **50.0517, 0.3600, 0.3332**, and if you desaturate by 10%, it is **71.1981, 0.3181, 0.3296**.

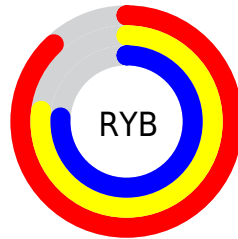
Distribution



Red (88%)

Green (77%)

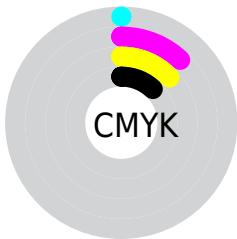
Blue (76%)



Red (88%)

Yellow (77%)

Blue (76%)

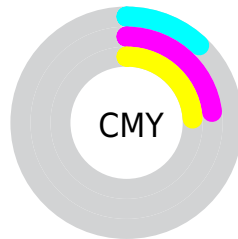


Cyan (0%)

Magenta (12%)

Yellow (13%)

Black (12%)



Cyan (12%)


Magenta (23%)


Yellow (24%)

Brightness & Saturation Gradients


These gradients show how the Yxy color 59.8802, 0.3368, 0.3313 changes by changing the brightness by 10 percent. The first figure shows a shift by +10% for each color and the second figure -10%.


Similar to the brightness gradients but the following saturation gradients show a change of the Yxy color 59.8802, 0.3368, 0.3313 by changing the saturation by 10% instead.


 59.8802, 0.3368,
0.3313

 59.8802, 0.3368,
0.3313


424.1561, 0.3252,
0.3303

 43.3221, 0.3396,
0.3315


 104.6559, 0.3327,
0.3310

 30.1379, 0.3431,
0.3318


133.6422, 0.3311,
0.3308

 19.9433, 0.3476,
0.3320


167.5401, 0.3298,
0.3307

 12.3538, 0.3537,
0.3324

206.7338, 0.3286,
0.3306

 6.9851, 0.3624,
0.3328

251.6079, 0.3276,
0.3305

 3.4528, 0.3758,
0.3332

302.5467, 0.3267,

 1.3724, 0.3989,

0.3304

359.9346, 0.3259,
0.3304

0.3333

0.1963, 0.6814,
0.3186

0.0000, 0.0000,
0.0000

59.8802, 0.3368,
0.3313

59.8802, 0.3368,
0.3313

50.0517, 0.3600,
0.3332

71.1981, 0.3181,
0.3296

41.6431, 0.3885,
0.3351

84.0555, 0.3030,
0.3279

34.5911, 0.4231,
0.3369

94.7511, 0.2946,
0.3289

28.8247, 0.4638,
0.3384

■ 24.2662, 0.5091,
0.3392

■ 20.8298, 0.5553,
0.3390

■ 18.4181, 0.5960,
0.3374

■ 16.9172, 0.6247,
0.3347

■ 16.3484, 0.6362,
0.3331

Harmonies

Analogous

The Analogous color harmony consists of three colors that are next to each other on the color wheel.



59.8802, 0.3273, 0.3197



59.8802, 0.3368, 0.3313



59.8802, 0.3397, 0.3426

Triad

The Triadic color harmony groups three colors that are evenly spaced from another and form a triangle on the color wheel.



59.8802, 0.3368, 0.3313



59.8802, 0.3110, 0.3485



59.8802, 0.2906, 0.3075

Complementary

The Complementary color scheme is a pair of colors which are on the opposite of each other on the color wheel.



59.8802, 0.3368, 0.3313



69.8401, 0.2924, 0.3267

Split Complementary

Split-complementary colors differ from the complementary color scheme. The scheme consists of three colors, the original color and two neighbors of the complement color.



59.8802, 0.2865, 0.3146



59.8802, 0.3368, 0.3313



59.8802, 0.2981, 0.3385

Square

The Square scheme is like the rectangle color scheme, but the four colors are evenly spaced on the color wheel.



59.8802, 0.3368, 0.3313



59.8802, 0.3245, 0.3529



59.8802, 0.2892, 0.3259



59.8802, 0.3006, 0.3061

Rectangle

The Rectangle color scheme consists of four colors that form a rectangle on the color wheel.



59.8802, 0.3368, 0.3313



59.8802, 0.3374, 0.3485



59.8802, 0.2892, 0.3259



59.8802, 0.2885, 0.3093

Sweetspot

The Sweet Spot groups the original color and five complimentary colors.



59.8829, 0.3368, 0.3313



93.4316, 0.3193, 0.3297



60.4049, 0.3154, 0.2978



19.7418, 0.3206, 0.3298



0.0000, 0.0000, 0.0000



21.4041, 0.3127, 0.3290

Same Dimension

The Same Dimension uses a secret algorithm to generate beautiful new colors.



59.8829, 0.3368, 0.3313



75.6950, 0.3427, 0.3318



66.7993, 0.3346, 0.3474



13.8449, 0.3290, 0.3306



9.4778, 0.6350, 0.3340



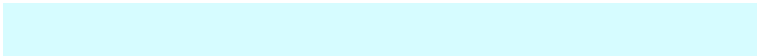
0.7088, 0.6209, 0.3452

Inverse Universe

The Inverse Universe completely reimagines the original color for something new.



69.8401, 0.2924, 0.3267



91.3611, 0.2883, 0.3262



62.4073, 0.2919, 0.3099



15.4094, 0.2982, 0.3274



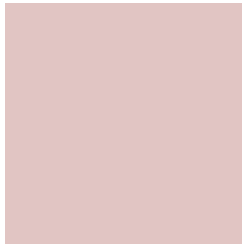
29.8067, 0.2190, 0.3084



2.1134, 0.2199, 0.3118

Previews

White Background



This preview shows how the Yxy color 59.8802, 0.3368, 0.3313 looks on a white background.

Color Contrast Check

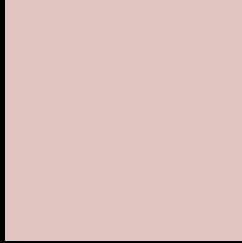
Large Text (above 18pt) WCAG AA × Fail

Any Text WCAG AA × Fail

Large Text (above 18pt) WCAG AAA × Fail

Any Text WCAG AAA × Fail

Black Background



This preview shows how the Yxy color 59.8802, 0.3368, 0.3313 looks on a black background.

Color Contrast Check

Large Text (above 18pt) WCAG AA ✓ Pass

Any Text WCAG AA ✓ Pass

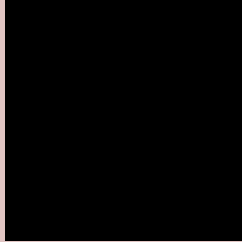
Large Text (above 18pt) WCAG AAA ✓ Pass

Any Text WCAG AAA ✓ Pass

If you want to check with other color combinations, try the [Color Contrast Checker](#).

Yxy 59.8802, 0.3368, 0.3313

Background



This preview shows how black text looks on a background with the Yxy color 59.8802, 0.3368, 0.3313.



This preview shows how white text looks on a background with the Yxy color 59.8802, 0.3368, 0.3313.

Color Blindness Simulation

Color vision deficiency is a very complex topic, and I could not describe the different causes any better than Wikipedia does, so if you want to learn more, you should check out their [article about color blindness](#).

Dichromacy



Original Color

59.8802, 0.3368, 0.3313

Protanopia

60.1990, 0.3202, 0.3349

Deuteranopia

60.0414, 0.3376, 0.3313



Tritanopia

60.0143, 0.3271, 0.3124

Trichromacy



Original Color

59.8802, 0.3368, 0.3313

Protanomaly

60.1006, 0.3259, 0.3337

Deuteranomaly

60.0414, 0.3376, 0.3313

Tritanomaly

60.0564, 0.3300, 0.3190

Monochromacy



Original Color

59.8802, 0.3368, 0.3313

Achromatopsia

61.0496, 0.3127, 0.3290

Achromatomaly

60.4552, 0.3212, 0.3302

CSS Examples

Text

The CSS property to change the color of the text to Yxy 59.8802, 0.3368, 0.3313 is called "color". The color property can be set on classes, ids or directly on the HTML element.

This example shows how text in the color `rgb(225, 197, 195)` looks like.

```
.text, #text, p{  
    color:rgb(225, 197, 195)  
}
```

If you want to add a text shadow in that color use the text-shadow property, you can generate a text shadow directly with our [CSS Text Shadow Generator](#).

Here you see how black text with a 4 pixel rgb(225, 197, 195) colored shadow looks like.

```
.shadow{ text-shadow: 4px 4px 2px rgb(225, 197, 195) }
```

Border

The CSS property to change the border of an element to Yxy 59.8802, 0.3368, 0.3313 is called "border". The border property can be set on classes, ids or directly on the HTML element.

This example shows the color as border, it can be applied via the CSS property "border" or "border-color".

```
.border, #border, table{ border:4px solid rgb(225, 197, 195) }
```

If only the border color should be changed use the property border-color.

```
.border{ border-color:rgb(225, 197, 195) }
```

If you want to add a box shadow in that color use:

Here you see how a box with a 4 pixel rgb(225, 197, 195) colored shadow looks like.

```
.boxshadow{ -moz-box-shadow:4px 4px 4px  
4px rgb(225, 197, 195); -webkit-box-  
shadow:4px 4px 4px 4px rgb(225, 197, 195);  
box-shadow:4px 4px 4px 4px rgb(225, 197,  
195) }
```


Background

The CSS property to change the background color of an element to Yxy 59.8802, 0.3368, 0.3313 is called "background". The background property can be set on classes, ids or directly on the HTML element.

```
.background, #background, body{  
background: rgb(225, 197, 195) }
```

If only the background color should be changed can be used:

```
.background{ background-color: rgb(225,  
197, 195) }
```

This example shows the color as background, it is applied via the CSS property "background".

To optimize and compress your CSS code, you can use our [online CSS compressor and optimizer](#) based on csstidy. If you want to create a linear or radial gradient as background or border, check our [CSS Gradient Generator](#).

Hey! You found this booklet interesting? Support Converting Colors with the new Membership Option!

The pro membership hides all ads, plus gives you double the colors in the color bucket, and more awesome pro features!

[Learn more, Memberships starting at \\$2.50/m!](#)

**Follow me
on Twitter!**

@ConvertingColor