

Converting Colors

$Yxy(60.0639, 0.3521, 0.3497)$

Have a look what the booklet for
Yxy(60.0639, 0.3521, 0.3497)
contains.

Yxy(60.3009, 0.3525, 0.3505)	3
Conversions	4
Details	6
Harmonies	12
Previews	24
Color Blindness Simulation	27
CSS Examples	30

Color

Yxy(60.3009, 0.3525, 0.3505)

Conversions

Conversions Part 1

Format	Color
Hex	E5C6B3
RGB	229, 198, 179
RGB Percent	90%, 78%, 70%
CMY	0.1020, 0.2235, 0.2980
CMYK	0.00, 0.14, 0.22, 0.10
HSL	23°, 49%, 80%
HSV	23°, 22%, 90%
XYZ	60.6450, 60.3009, 51.0966
YIQ	205.1030, 24.5750, 0.6630

Conversions

Conversions Part 2

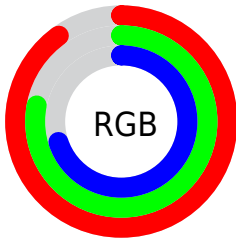
Format	Color
R_{YB}	229, 210, 179
Decimal	15058611
CIE _{Lab}	82.00, 8.03, 13.55
CIE _{LCh}	82, 15.748, 59.346
Yxy	60.3009, 0.3525, 0.3505
Android (android.graphics.Color)	4293248691 (0xFFE5C6B3)
YUV	205.1030, -12.8688, 20.9577
Hunter-Lab	77.6537, 3.5088, 15.3443

Details

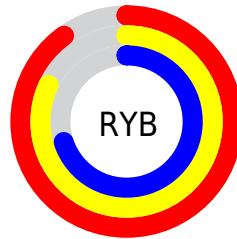
The Yxy color $60.3009, 0.3525, 0.3505$ is a light color, and the websafe version is hex `FFCCCC`. A complement of this color would be $61.3403, 0.2787, 0.3065$, and the grayscale version is $61.1931, 0.3127, 0.3290$.

A 20% lighter version of the original color is $98.7782, 0.3244, 0.3483$, and $30.3371, 0.3632, 0.3558$ is the 20% darker color. If you saturate the color by 10%, you get $53.2622, 0.3756, 0.3610$, and if you desaturate by 10%, it is $68.1076, 0.3326, 0.3403$.

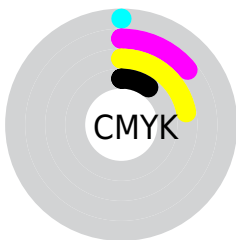
Distribution



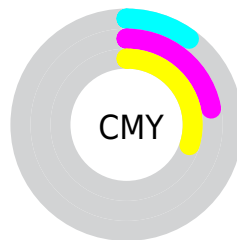
- Red (90%)
- Green (78%)
- Blue (70%)



- Red (90%)
- Yellow (82%)
- Blue (70%)



- Cyan (0%)
- Magenta (14%)
- Yellow (22%)
- Black (10%)




- Cyan (10%)
- Magenta (22%)
- Yellow (30%)

Brightness & Saturation Gradients

These gradients show how the Yxy color 60.3009, 0.3525, 0.3505 changes by changing the brightness by 10 percent. The first figure shows a shift by +10% for each color and the second figure -10%.


Similar to the brightness gradients but the following saturation gradients show a change of the Yxy color 60.3009, 0.3525, 0.3505 by changing the saturation by 10% instead.


 60.3009, 0.3525,
0.3505

 60.3009, 0.3525,
0.3505

425.7060, 0.3333,
0.3405

 43.6612, 0.3571,
0.3528


 105.2660, 0.3457,
0.3470

 30.4043, 0.3628,
0.3556


134.3603, 0.3431,
0.3457

 20.1456, 0.3702,
0.3592


168.3748, 0.3409,
0.3445

 12.5010, 0.3802,
0.3638

207.6941, 0.3390,
0.3435

 7.0858, 0.3943,
0.3700

252.7024, 0.3373,
0.3426

 3.5158, 0.4155,
0.3787

303.7843, 0.3358,

 1.4066, 0.4597,

0.3418

361.3240, 0.3345,
0.3411

0.3987

0.2216, 0.6473,
0.3527

0.0000, 0.0000,
0.0000

60.3009, 0.3525,
0.3505

60.3009, 0.3525,
0.3505

53.2622, 0.3756,
0.3610

68.1076, 0.3326,
0.3403

46.9590, 0.4022,
0.3713

76.6971, 0.3155,
0.3307

41.3685, 0.4320,
0.3807

86.0942, 0.3010,
0.3217

36.4634, 0.4643,
0.3883

95.2732, 0.2970,
0.3288

■ 32.2143, 0.4978,
0.3926

■ 95.3982, 0.2970,
0.3290

■ 28.5895, 0.5301,
0.3925

■ 25.5534, 0.5584,
0.3872

■ 23.4751, 0.5776,
0.3796

Harmonies

Analogous

The Analogous color harmony consists of three colors that are next to each other on the color wheel.



60.3009, 0.3496, 0.3342



60.3009, 0.3525, 0.3505



60.3009, 0.3444, 0.3619

Triad

The Triadic color harmony groups three colors that are evenly spaced from another and form a triangle on the color wheel.



60.3009, 0.3525, 0.3505



60.3009, 0.2891, 0.3409



60.3009, 0.2969, 0.2959

Complementary

The Complementary color scheme is a pair of colors which are on the opposite of each other on the color wheel.



60.3009, 0.3525, 0.3505



61.3403, 0.2787, 0.3065

Split Complementary

Split-complementary colors differ from the complementary color scheme. The scheme consists of three colors, the original color and two neighbors of the complement color.



60.3009, 0.2815, 0.2966



60.3009, 0.3525, 0.3505



60.3009, 0.2772, 0.3220

Square

The Square scheme is like the rectangle color scheme, but the four colors are evenly spaced on the color wheel.



60.3009, 0.3525, 0.3505



60.3009, 0.3075, 0.3568



60.3009, 0.2744, 0.3058



60.3009, 0.3170, 0.3034

Rectangle

The Rectangle color scheme consists of four colors that form a rectangle on the color wheel.



60.3009, 0.3525, 0.3505



60.3009, 0.3340, 0.3647



60.3009, 0.2744, 0.3058



60.3009, 0.2910, 0.2951

Sweetspot

The Sweet Spot groups the original color and five complimentary colors.



60.3036, 0.3525, 0.3505



92.0434, 0.3241, 0.3356



53.5902, 0.3299, 0.2939



19.5593, 0.3251, 0.3362



0.0000, 0.0000, 0.0000



21.4041, 0.3127, 0.3290

Same Dimension

The Same Dimension uses a secret algorithm to generate beautiful new colors.



60.3036, 0.3525, 0.3505



72.9580, 0.3621, 0.3550



72.3347, 0.3470, 0.3765



15.2609, 0.3283, 0.3380



13.6363, 0.5748, 0.3818



1.1824, 0.5475, 0.4035

Inverse Universe

The Inverse Universe completely reimagines the original color for something new.



61.3403, 0.2787, 0.3065



74.4891, 0.2719, 0.3014



50.2246, 0.2765, 0.2765



15.3682, 0.2981, 0.3199



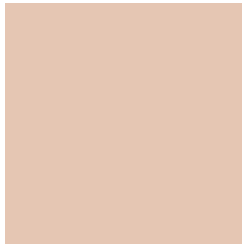
14.5345, 0.1889, 0.1998



1.2519, 0.1947, 0.2207

Previews

White Background



This preview shows how the Yxy color 60.3009, 0.3525, 0.3505 looks on a white background.

Color Contrast Check

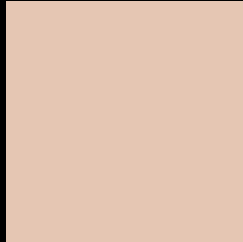
Large Text (above 18pt) WCAG AA × Fail

Any Text WCAG AA × Fail

Large Text (above 18pt) WCAG AAA × Fail

Any Text WCAG AAA × Fail

Black Background



This preview shows how the Yxy color 60.3009, 0.3525, 0.3505 looks on a black background.

Color Contrast Check

Large Text (above 18pt) WCAG AA ✓ Pass

Any Text WCAG AA ✓ Pass

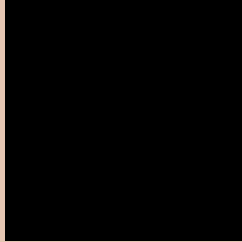
Large Text (above 18pt) WCAG AAA ✓ Pass

Any Text WCAG AAA ✓ Pass

If you want to check with other color combinations, try the [Color Contrast Checker](#).

Yxy 60.3009, 0.3525, 0.3505

Background



This preview shows how black text looks on a background with the Yxy color 60.3009, 0.3525, 0.3505.



This preview shows how white text looks on a background with the Yxy color 60.3009, 0.3525, 0.3505.

Color Blindness Simulation

Color vision deficiency is a very complex topic, and I could not describe the different causes any better than Wikipedia does, so if you want to learn more, you should check out their [article about color blindness](#).

Dichromacy



Original Color

60.3009, 0.3525, 0.3505

Protanopia

60.2354, 0.3360, 0.3536

Deuteranopia

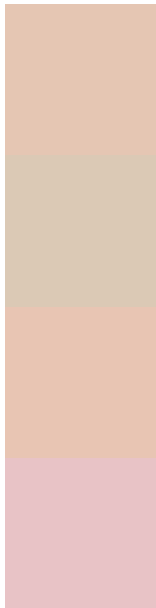
60.5108, 0.3561, 0.3492



Tritanopia

60.5107, 0.3328, 0.3127

Trichromacy



Original Color

60.3009, 0.3525, 0.3505

Protanomaly

60.1696, 0.3420, 0.3522

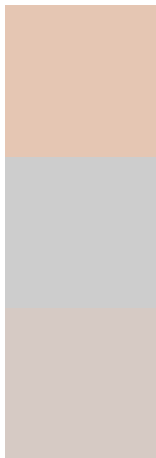
Deuteranomaly

60.3430, 0.3552, 0.3492

Tritanomaly

60.2632, 0.3405, 0.3258

Monochromacy



Original Color

60.3009, 0.3525, 0.3505

Achromatopsia

61.0496, 0.3127, 0.3290

Achromatomaly

60.5227, 0.3265, 0.3360

CSS Examples

Text

The CSS property to change the color of the text to Yxy 60.3009, 0.3525, 0.3505 is called "color". The color property can be set on classes, ids or directly on the HTML element.

This example shows how text in the color `rgb(229, 198, 179)` looks like.

```
.text, #text, p{  
    color:rgb(229, 198, 179)  
}
```

If you want to add a text shadow in that color use the text-shadow property, you can generate a text shadow directly with our [CSS Text Shadow Generator](#).

Here you see how black text with a 4 pixel rgb(229, 198, 179) colored shadow looks like.

```
.shadow{ text-shadow: 4px 4px 2px rgb(229, 198, 179) }
```

Border

The CSS property to change the border of an element to Yxy 60.3009, 0.3525, 0.3505 is called "border". The border property can be set on classes, ids or directly on the HTML element.

This example shows the color as border, it can be applied via the CSS property "border" or "border-color".

```
.border, #border, table{ border:4px solid rgb(229, 198, 179) }
```

If only the border color should be changed use the property `border-color`.

```
.border{ border-color:rgb(229, 198, 179) }
```

If you want to add a box shadow in that color use:

Here you see how a box with a 4 pixel `rgb(229, 198, 179)` colored shadow looks like.

```
.boxshadow{ -moz-box-shadow:4px 4px 4px  
4px rgb(229, 198, 179); -webkit-box-  
shadow:4px 4px 4px 4px rgb(229, 198, 179);  
box-shadow:4px 4px 4px 4px rgb(229, 198,  
179) }
```


Background

The CSS property to change the background color of an element to Yxy 60.3009, 0.3525, 0.3505 is called "background". The background property can be set on classes, ids or directly on the HTML element.

```
.background, #background, body{  
background: rgb(229, 198, 179) }
```

If only the background color should be changed can be used:

```
.background{ background-color: rgb(229,  
198, 179) }
```

This example shows the color as background, it is applied via the CSS property "background".

To optimize and compress your CSS code, you can use our [online CSS compressor and optimizer](#) based on csstidy. If you want to create a linear or radial gradient as background or border, check our [CSS Gradient Generator](#).

Hey! You found this booklet interesting? Support Converting Colors with the new Membership Option!

The pro membership hides all ads, plus gives you double the colors in the color bucket, and more awesome pro features!

[Learn more, Memberships starting at \\$2.50/m!](#)

**Follow me
on Twitter!**

@ConvertingColor