

Converting Colors

$Yxy(60.0932, 0.3296, 0.3185)$

Have a look what the booklet for
Yxy(60.0932, 0.3296, 0.3185)
contains.

Yxy(60.0564, 0.3300, 0.3190)	3
<i>Conversions</i>	4
<i>Details</i>	6
<i>Harmonies</i>	12
<i>Previews</i>	24
<i>Color Blindness Simulation</i>	27
<i>CSS Examples</i>	30

Color

Yxy(60.0564, 0.3300, 0.3190)

Conversions

Conversions Part 1

Format	Color
Hex	E2C4CD
RGB	226, 196, 205
RGB Percent	89%, 77%, 80%
CMY	0.1137, 0.2314, 0.1960
CMYK	0.00, 0.13, 0.09, 0.11
HSL	342°, 34%, 83%
HSV	342°, 13%, 89%
XYZ	62.1273, 60.0564, 66.0809
YIQ	205.9960, 14.9910, 9.1590

Conversions

Conversions Part 2

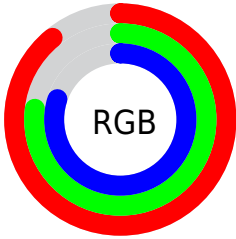
Format	Color
R _{YB}	226, 196, 205
Decimal	14861517
CIE Lab	81.87, 12.08, -0.59
CIE LCh	82, 12.094, 357.198
Yxy	60.0564, 0.3300, 0.3190
Android (android.graphics.Color)	4293051597 (0xFFE2C4CD)
YUV	205.9960, -0.4910, 17.5435
Hunter-Lab	77.4961, 7.4824, 3.6907

Details

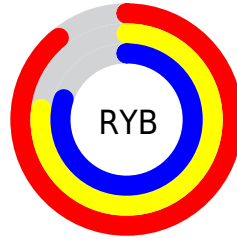
The Yxy color **60.0564, 0.3300, 0.3190** is a light color, and the websafe version is hex **FFCCCC**. A complement of this color would be **71.1460, 0.2980, 0.3392**, and the grayscale version is **61.7174, 0.3127, 0.3290**.

A 20% lighter version of the original color is **98.7306, 0.3128, 0.3271**, and **30.1264, 0.3338, 0.3159** is the 20% darker color. If you saturate the color by 10%, you get **49.8937, 0.3465, 0.3110**, and if you desaturate by 10%, it is **71.8374, 0.3166, 0.3266**.

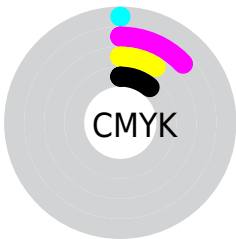
Distribution



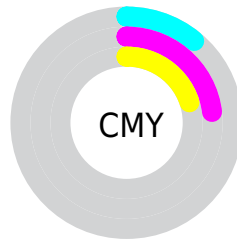
- Red (89%)
- Green (77%)
- Blue (80%)



- Red (89%)
- Yellow (77%)
- Blue (80%)



- Cyan (0%)
- Magenta (13%)
- Yellow (9%)
- Black (11%)





- Cyan (11%)
- Magenta (23%)
- Yellow (20%)

Brightness & Saturation Gradients

These gradients show how the Yxy color 60.0564, 0.3300, 0.3190 changes by changing the brightness by 10 percent. The first figure shows a shift by +10% for each color and the second figure -10%.


Similar to the brightness gradients but the following saturation gradients show a change of the Yxy color 60.0564, 0.3300, 0.3190 by changing the saturation by 10% instead.


 60.0564, 0.3300,
0.3190

 60.0564, 0.3300,
0.3190


424.8056, 0.3217,
0.3238

 43.4641, 0.3320,
0.3179

 104.9115, 0.3271,
0.3207

 30.2494, 0.3344,
0.3164


133.9430, 0.3260,
0.3213

 20.0280, 0.3376,
0.3146


167.8898, 0.3250,
0.3219

 12.4154, 0.3419,
0.3121

207.1362, 0.3242,
0.3224

 7.0272, 0.3480,
0.3087

252.0666, 0.3234,
0.3228

 3.4791, 0.3572,
0.3034

303.0653, 0.3228,

 1.3867, 0.3730,

0.3232

0.2944

360.5169, 0.3222,
0.3235

0.2069, 0.5094,
0.2144

0.0000, 0.0000,
0.0000

60.0564, 0.3300,
0.3190

60.0564, 0.3300,
0.3190

49.8937, 0.3465,
0.3110

71.8374, 0.3166,
0.3266

41.2707, 0.3667,
0.3028

85.2952, 0.3056,
0.3337

34.1140, 0.3910,
0.2948

94.7484, 0.2966,
0.3315

28.3410, 0.4199,
0.2878

94.9110, 0.2952,
0.3289

■ 23.8610, 0.4529,
0.2827

■ 20.5721, 0.4890,
0.2808

■ 18.3573, 0.5256,
0.2831

■ 17.0750, 0.5595,
0.2901

■ 16.5866, 0.5794,
0.2965

Harmonies

Analogous

The Analogous color harmony consists of three colors that are next to each other on the color wheel.



60.0564, 0.3149, 0.3085



60.0564, 0.3300, 0.3190



60.0564, 0.3405, 0.3322

Triad

The Triadic color harmony groups three colors that are evenly spaced from another and form a triangle on the color wheel.



60.0564, 0.3300, 0.3190



60.0564, 0.3254, 0.3562



60.0564, 0.2830, 0.3121

Complementary

The Complementary color scheme is a pair of colors which are on the opposite of each other on the color wheel.



60.0564, 0.3300, 0.3190



71.1460, 0.2980, 0.3392

Split Complementary

Split-complementary colors differ from the complementary color scheme. The scheme consists of three colors, the original color and two neighbors of the complement color.



60.0564, 0.2857, 0.3248



60.0564, 0.3300, 0.3190



60.0564, 0.3099, 0.3508

Square

The Square scheme is like the rectangle color scheme, but the four colors are evenly spaced on the color wheel.



60.0564, 0.3300, 0.3190



60.0564, 0.3378, 0.3539



60.0564, 0.2954, 0.3391



60.0564, 0.2880, 0.3043

Rectangle

The Rectangle color scheme consists of four colors that form a rectangle on the color wheel.



60.0564, 0.3300, 0.3190



60.0564, 0.3434, 0.3409



60.0564, 0.2954, 0.3391



60.0564, 0.2830, 0.3159

Sweetspot

The Sweet Spot groups the original color and five complimentary colors.



60.0591, 0.3300, 0.3190



93.2126, 0.3175, 0.3261



59.6482, 0.3069, 0.2956



19.6867, 0.3184, 0.3255



0.0000, 0.0000, 0.0000



21.4041, 0.3127, 0.3290

Same Dimension

The Same Dimension uses a secret algorithm to generate beautiful new colors.



60.0591, 0.3300, 0.3190



74.9701, 0.3343, 0.3168



62.1645, 0.3362, 0.3352



13.7679, 0.3245, 0.3220



9.4797, 0.5753, 0.2943



0.6726, 0.5312, 0.2700

Inverse Universe

The Inverse Universe completely reimagines the original color for something new.



60.0591, 0.3300, 0.3190



74.9701, 0.3343, 0.3168



68.6828, 0.2923, 0.3227



13.7679, 0.3245, 0.3220



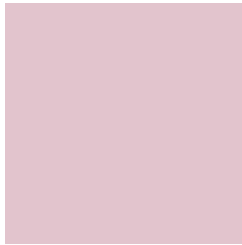
9.4797, 0.5753, 0.2943



0.6726, 0.5312, 0.2700

Previews

White Background



This preview shows how the Yxy color 60.0564, 0.3300, 0.3190 looks on a white background.

Color Contrast Check

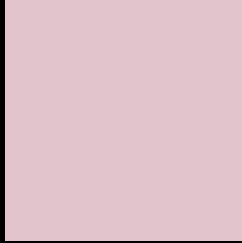
Large Text (above 18pt) WCAG AA × Fail

Any Text WCAG AA × Fail

Large Text (above 18pt) WCAG AAA × Fail

Any Text WCAG AAA × Fail

Black Background



This preview shows how the Yxy color 60.0564, 0.3300, 0.3190 looks on a black background.

Color Contrast Check

Large Text (above 18pt) WCAG AA ✓ Pass

Any Text WCAG AA ✓ Pass

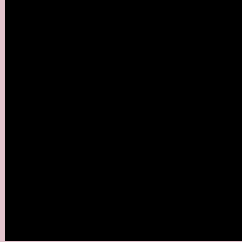
Large Text (above 18pt) WCAG AAA ✓ Pass

Any Text WCAG AAA ✓ Pass

If you want to check with other color combinations, try the [Color Contrast Checker](#).

Yxy 60.0564, 0.3300, 0.3190

Background



This preview shows how black text looks on a background with the Yxy color 60.0564, 0.3300, 0.3190.



This preview shows how white text looks on a background with the Yxy color 60.0564, 0.3300, 0.3190.

Color Blindness Simulation

Color vision deficiency is a very complex topic, and I could not describe the different causes any better than Wikipedia does, so if you want to learn more, you should check out their [article about color blindness](#).

Dichromacy



Original Color

60.0564, 0.3300, 0.3190

Protanopia

60.4371, 0.3108, 0.3220

Deuteranopia

60.0283, 0.3275, 0.3201



Tritanopia

60.0143, 0.3271, 0.3124

Trichromacy



Original Color

60.0564, 0.3300, 0.3190

Protanomaly

60.0088, 0.3170, 0.3199

Deuteranomaly

60.1876, 0.3283, 0.3201

Tritanomaly

59.9152, 0.3286, 0.3146

Monochromacy



Original Color

60.0564, 0.3300, 0.3190

Achromatopsia

61.7207, 0.3127, 0.3290

Achromatomaly

60.8434, 0.3183, 0.3244

CSS Examples

Text

The CSS property to change the color of the text to Yxy 60.0564, 0.3300, 0.3190 is called "color". The color property can be set on classes, ids or directly on the HTML element.

This example shows how text in the color `rgb(226, 196, 205)` looks like.

```
.text, #text, p{  
    color:rgb(226, 196, 205)  
}
```

If you want to add a text shadow in that color use the text-shadow property, you can generate a text shadow directly with our [CSS Text Shadow Generator](#).

Here you see how black text with a 4 pixel rgb(226, 196, 205) colored shadow looks like.

```
.shadow{ text-shadow: 4px 4px 2px rgb(226, 196, 205) }
```

Border

The CSS property to change the border of an element to Yxy 60.0564, 0.3300, 0.3190 is called "border". The border property can be set on classes, ids or directly on the HTML element.

This example shows the color as border, it can be applied via the CSS property "border" or "border-color".

```
.border, #border, table{ border:4px solid rgb(226, 196, 205) }
```

If only the border color should be changed use the property `border-color`.

```
.border{ border-color:rgb(226, 196, 205) }
```

If you want to add a box shadow in that color use:

Here you see how a box with a 4 pixel `rgb(226, 196, 205)` colored shadow looks like.

```
.boxshadow{ -moz-box-shadow:4px 4px 4px  
4px rgb(226, 196, 205); -webkit-box-  
shadow:4px 4px 4px 4px rgb(226, 196, 205);  
box-shadow:4px 4px 4px 4px rgb(226, 196,  
205) }
```


Background

The CSS property to change the background color of an element to Yxy 60.0564, 0.3300, 0.3190 is called "background". The background property can be set on classes, ids or directly on the HTML element.

```
.background, #background, body{  
background: rgb(226, 196, 205) }
```

If only the background color should be changed can be used:

```
.background{ background-color: rgb(226,  
196, 205) }
```

This example shows the color as background, it is applied via the CSS property "background".

To optimize and compress your CSS code, you can use our [online CSS compressor and optimizer](#) based on csstidy. If you want to create a linear or radial gradient as background or border, check our [CSS Gradient Generator](#).

Hey! You found this booklet interesting? Support Converting Colors with the new Membership Option!

The pro membership hides all ads, plus gives you double the colors in the color bucket, and more awesome pro features!

[Learn more, Memberships starting at \\$2.50/m!](#)

**Follow me
on Twitter!**

@ConvertingColor