

Converting Colors

$Yxy(60.0958, 0.3560, 0.3516)$

Have a look what the booklet for
Yxy(60.0958, 0.3560, 0.3516)
contains.

Yxy(60.0958, 0.3560, 0.3516)	3
Conversions	4
Details	6
Harmonies	12
Previews	24
Color Blindness Simulation	27
CSS Examples	30

Color

Yxy(60.0958, 0.3560, 0.3516)

Conversions

Conversions Part 1

Format	Color
Hex	E7C5B1
RGB	231, 197, 177
RGB Percent	91%, 77%, 69%
CMY	0.0942, 0.2274, 0.3060
CMYK	0.00, 0.15, 0.23, 0.09
HSL	22°, 53%, 80%
HSV	22°, 23%, 91%
XYZ	60.8479, 60.0958, 49.9773
YIQ	204.8860, 26.6840, 0.9880

Conversions

Conversions Part 2

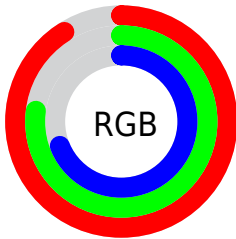
Format	Color
R _Y B	231, 209, 177
Decimal	15189425
CIE Lab	81.89, 8.99, 14.50
CIE LCh	82, 17.059, 58.205
Yxy	60.0958, 0.3560, 0.3516
Android (android.graphics.Color)	4293379505 (0xFFE7C5B1)
YUV	204.8860, -13.7478, 22.9020
Hunter-Lab	77.5215, 4.4449, 16.0414

Details

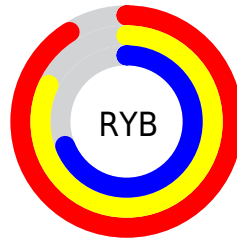
The Yxy color **60.0958, 0.3560, 0.3516** is a light color, and the websafe version is hex **FFCCCC**. A complement of this color would be **61.6670, 0.2763, 0.3052**, and the grayscale version is **61.0495, 0.3127, 0.3290**.

A 20% lighter version of the original color is **98.0268, 0.3257, 0.3493**, and **30.2141, 0.3680, 0.3571** is the 20% darker color. If you saturate the color by 10%, you get **52.9719, 0.3798, 0.3619**, and if you desaturate by 10%, it is **68.0166, 0.3355, 0.3416**.

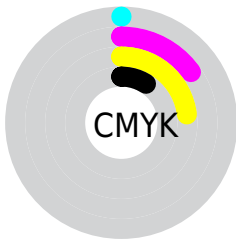
Distribution



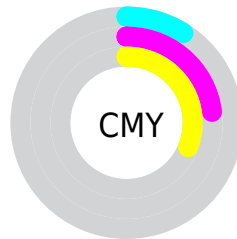
- Red (91%)
- Green (77%)
- Blue (69%)



- Red (91%)
- Yellow (82%)
- Blue (69%)



- Cyan (0%)
- Magenta (15%)
- Yellow (23%)
- Black (9%)





- Cyan (9%)
- Magenta (23%)
- Yellow (31%)

Brightness & Saturation Gradients


These gradients show how the Yxy color 60.0958, 0.3560, 0.3516 changes by changing the brightness by 10 percent. The first figure shows a shift by +10% for each color and the second figure -10%.


Similar to the brightness gradients but the following saturation gradients show a change of the Yxy color 60.0958, 0.3560, 0.3516 by changing the saturation by 10% instead.


 60.0958, 0.3560,
0.3516

 60.0958, 0.3560,
0.3516


424.9508, 0.3351,
0.3411

 43.4959, 0.3610,
0.3540


 104.9686, 0.3486,
0.3480

 30.2744, 0.3672,
0.3569


134.0103, 0.3458,
0.3466

 20.0469, 0.3753,
0.3606


167.9680, 0.3433,
0.3453

 12.4292, 0.3862,
0.3654

207.2261, 0.3413,
0.3443

 7.0367, 0.4015,
0.3717

252.1691, 0.3394,
0.3433

 3.4850, 0.4246,
0.3804

303.1812, 0.3378,

 1.3899, 0.4754,

0.3425

0.4029

360.6470, 0.3364,
0.3418

0.2093, 0.6666,
0.3334

0.0000, 0.0000,
0.0000

60.0958, 0.3560,
0.3516

60.0958, 0.3560,
0.3516

52.9719, 0.3798,
0.3619

68.0166, 0.3355,
0.3416

46.6111, 0.4071,
0.3719

76.7505, 0.3180,
0.3321

40.9887, 0.4377,
0.3809

86.3237, 0.3031,
0.3232

36.0758, 0.4707,
0.3878

95.7237, 0.2981,
0.3290

■ 31.8412, 0.5046,
0.3913

■ 28.2508, 0.5369,
0.3903

■ 25.2665, 0.5646,
0.3840

■ 23.5955, 0.5801,
0.3776

Harmonies

Analogous

The Analogous color harmony consists of three colors that are next to each other on the color wheel.



60.0958, 0.3524, 0.3338



60.0958, 0.3560, 0.3516



60.0958, 0.3476, 0.3643

Triad

The Triadic color harmony groups three colors that are evenly spaced from another and form a triangle on the color wheel.



60.0958, 0.3560, 0.3516



60.0958, 0.2878, 0.3427



60.0958, 0.2948, 0.2930

Complementary

The Complementary color scheme is a pair of colors which are on the opposite of each other on the color wheel.



60.0958, 0.3560, 0.3516



61.6670, 0.2763, 0.3052

Split Complementary

Split-complementary colors differ from the complementary color scheme. The scheme consists of three colors, the original color and two neighbors of the complement color.



60.0958, 0.2785, 0.2941



60.0958, 0.3560, 0.3516



60.0958, 0.2746, 0.3221

Square

The Square scheme is like the rectangle color scheme, but the four colors are evenly spaced on the color wheel.



60.0958, 0.3560, 0.3516



60.0958, 0.3079, 0.3597



60.0958, 0.2712, 0.3044



60.0958, 0.3164, 0.3008

Rectangle

The Rectangle color scheme consists of four colors that form a rectangle on the color wheel.



60.0958, 0.3560, 0.3516



60.0958, 0.3365, 0.3677



60.0958, 0.2712, 0.3044



60.0958, 0.2885, 0.2924

Sweetspot

The Sweet Spot groups the original color and five complimentary colors.



60.0985, 0.3560, 0.3516



91.9493, 0.3241, 0.3355



53.1326, 0.3314, 0.2913



19.5375, 0.3251, 0.3361



0.0000, 0.0000, 0.0000



21.4041, 0.3127, 0.3290

Same Dimension

The Same Dimension uses a secret algorithm to generate beautiful new colors.



60.0985, 0.3560, 0.3516



70.8468, 0.3669, 0.3565



73.3452, 0.3496, 0.3800



15.2398, 0.3283, 0.3378



13.4501, 0.5772, 0.3799



1.1672, 0.5497, 0.4017

Inverse Universe

The Inverse Universe completely reimagines the original color for something new.



61.6670, 0.2763, 0.3052



73.1230, 0.2689, 0.2997



49.4685, 0.2737, 0.2723



15.3900, 0.2981, 0.3201



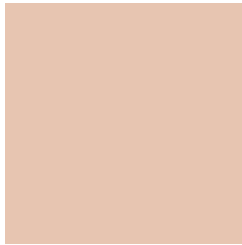
14.8778, 0.1897, 0.2030



1.2759, 0.1954, 0.2234

Previews

White Background



This preview shows how the Yxy color 60.0958, 0.3560, 0.3516 looks on a white background.

Color Contrast Check

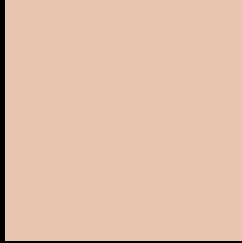
Large Text (above 18pt) WCAG AA × Fail

Any Text WCAG AA × Fail

Large Text (above 18pt) WCAG AAA × Fail

Any Text WCAG AAA × Fail

Black Background



This preview shows how the Yxy color 60.0958, 0.3560, 0.3516 looks on a black background.

Color Contrast Check

Large Text (above 18pt) WCAG AA ✓ Pass

Any Text WCAG AA ✓ Pass

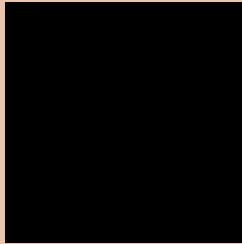
Large Text (above 18pt) WCAG AAA ✓ Pass

Any Text WCAG AAA ✓ Pass

If you want to check with other color combinations, try the [Color Contrast Checker](#).

Yxy 60.0958, 0.3560, 0.3516

Background



This preview shows how black text looks on a background with the Yxy color 60.0958, 0.3560, 0.3516.



This preview shows how white text looks on a background with the Yxy color 60.0958, 0.3560, 0.3516.

Color Blindness Simulation

Color vision deficiency is a very complex topic, and I could not describe the different causes any better than Wikipedia does, so if you want to learn more, you should check out their [article about color blindness](#).

Dichromacy



Original Color

60.0958, 0.3560, 0.3516

Protanopia

60.1533, 0.3375, 0.3560

Deuteranopia

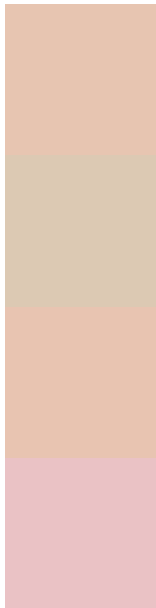
59.9778, 0.3579, 0.3503



Tritanopia

60.3562, 0.3353, 0.3127

Trichromacy



Original Color

60.0958, 0.3560, 0.3516

Protanomaly

60.2436, 0.3444, 0.3544

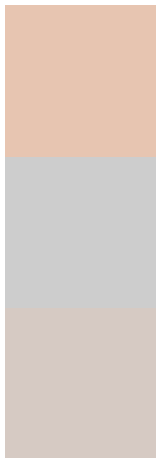
Deuteranomaly

59.8100, 0.3571, 0.3504

Tritanomaly

60.1072, 0.3431, 0.3258

Monochromacy



Original Color

60.0958, 0.3560, 0.3516

Achromatopsia

61.0496, 0.3127, 0.3290

Achromatomaly

60.4773, 0.3272, 0.3371

CSS Examples

Text

The CSS property to change the color of the text to Yxy 60.0958, 0.3560, 0.3516 is called "color". The color property can be set on classes, ids or directly on the HTML element.

This example shows how text in the color `rgb(231, 197, 177)` looks like.

```
.text, #text, p{  
    color:rgb(231, 197, 177)  
}
```

If you want to add a text shadow in that color use the text-shadow property, you can generate a text shadow directly with our [CSS Text Shadow Generator](#).

Here you see how black text with a 4 pixel rgb(231, 197, 177) colored shadow looks like.

```
.shadow{ text-shadow: 4px 4px 2px rgb(231, 197, 177) }
```

Border

The CSS property to change the border of an element to Yxy 60.0958, 0.3560, 0.3516 is called "border". The border property can be set on classes, ids or directly on the HTML element.

This example shows the color as border, it can be applied via the CSS property "border" or "border-color".

```
.border, #border, table{ border:4px solid rgb(231, 197, 177) }
```

If only the border color should be changed use the property border-color.

```
.border{ border-color:rgb(231, 197, 177) }
```

If you want to add a box shadow in that color use:

Here you see how a box with a 4 pixel rgb(231, 197, 177) colored shadow looks like.

```
.boxshadow{ -moz-box-shadow:4px 4px 4px  
4px rgb(231, 197, 177); -webkit-box-  
shadow:4px 4px 4px 4px rgb(231, 197, 177);  
box-shadow:4px 4px 4px 4px rgb(231, 197,  
177) }
```


Background

The CSS property to change the background color of an element to $\text{Yxy } 60.0958, 0.3560, 0.3516$ is called "background". The background property can be set on classes, ids or directly on the HTML element.

```
.background, #background, body{  
background: rgb(231, 197, 177) }
```

If only the background color should be changed can be used:

```
.background{ background-color: rgb(231,  
197, 177) }
```

This example shows the color as background, it is applied via the CSS property "background".

To optimize and compress your CSS code, you can use our [online CSS compressor and optimizer](#) based on csstidy. If you want to create a linear or radial gradient as background or border, check our [CSS Gradient Generator](#).

Hey! You found this booklet interesting? Support Converting Colors with the new Membership Option!

The pro membership hides all ads, plus gives you double the colors in the color bucket, and more awesome pro features!

[Learn more, Memberships starting at \\$2.50/m!](#)

**Follow me
on Twitter!**

@ConvertingColor