

Converting Colors

$Yxy(60.0993, 0.3221, 0.3216)$

Have a look what the booklet for
Yxy(60.0993, 0.3221, 0.3216)
contains.

Yxy(60.0548, 0.3217, 0.3211)	3
<i>Conversions</i>	4
<i>Details</i>	6
<i>Harmonies</i>	12
<i>Previews</i>	24
<i>Color Blindness Simulation</i>	27
<i>CSS Examples</i>	30

Color

Yxy(60.0548, 0.3217, 0.3211)

Conversions

Conversions Part 1

Format	Color
Hex	D9C7CE
RGB	217, 199, 206
RGB Percent	85%, 78%, 81%
CMY	0.1492, 0.2195, 0.1922
CMYK	0.00, 0.08, 0.05, 0.15
HSL	337°, 19%, 82%
HSV	337°, 8%, 85%
XYZ	60.1670, 60.0548, 66.8065
YIQ	205.1800, 8.4810, 5.9930

Conversions

Conversions Part 2

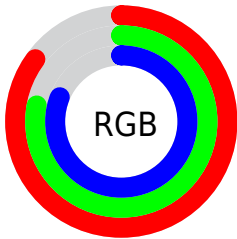
Format	Color
RYP	217, 199, 206
Decimal	14272462
CIE Lab	81.87, 7.47, -1.21
CIE LCh	82, 7.568, 350.799
Yxy	60.0548, 0.3217, 0.3211
Android (android.graphics.Color)	4292462542 (0xFFD9C7CE)
YUV	205.1800, 0.4043, 10.3661
Hunter-Lab	77.4950, 2.9708, 3.1341

Details

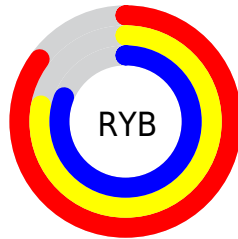
The Yxy color **60.0548, 0.3217, 0.3211** is a light color, and the websafe version is hex **CCCCCC**. A complement of this color would be **66.3976, 0.3045, 0.3370**, and the grayscale version is **61.1619, 0.3127, 0.3290**.

A 20% lighter version of the original color is **100.0000, 0.3127, 0.3290**, and **30.1992, 0.3237, 0.3185** is the 20% darker color. If you saturate the color by 10%, you get **50.1563, 0.3347, 0.3110**, and if you desaturate by 10%, it is **71.4362, 0.3110, 0.3306**.

Distribution



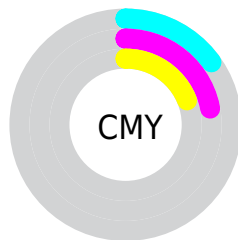
- Red (85%)
- Green (78%)
- Blue (81%)



- Red (85%)
- Yellow (78%)
- Blue (81%)



- Cyan (0%)
- Magenta (8%)
- Yellow (5%)
- Black (15%)



- Cyan (15%)
- Magenta (22%)
- Yellow (19%)

Brightness & Saturation Gradients

These gradients show how the Yxy color 60.0548, 0.3217, 0.3211 changes by changing the brightness by 10 percent. The first figure shows a shift by +10% for each color and the second figure -10%.

Similar to the brightness gradients but the following saturation gradients show a change of the Yxy color 60.0548, 0.3217, 0.3211 by changing the saturation by 10% instead.

60.0548, 0.3217,
0.3211

60.0548, 0.3217,
0.3211

424.7997, 0.3174,
0.3249

43.4628, 0.3227,
0.3202

104.9092, 0.3202,
0.3224

30.2484, 0.3240,
0.3191

133.9403, 0.3196,
0.3229

20.0272, 0.3256,
0.3176

167.8866, 0.3191,
0.3234

12.4148, 0.3279,
0.3157

207.1325, 0.3187,
0.3238

7.0269, 0.3310,
0.3130

252.0624, 0.3183,
0.3241

3.4789, 0.3358,
0.3089

303.0606, 0.3180,

1.3866, 0.3439,

0.3244

0.3019

360.5116, 0.3177,
0.3246

0.2068, 0.4231,
0.2309

0.0000, 0.0000,
0.0000

60.0548, 0.3217,
0.3211

60.0548, 0.3217,
0.3211

50.1563, 0.3347,
0.3110

71.4362, 0.3110,
0.3306

41.6716, 0.3506,
0.3005

84.3502, 0.3023,
0.3394

34.5378, 0.3697,
0.2900

92.9043, 0.2949,
0.3384

28.6841, 0.3923,
0.2802

93.4841, 0.2900,
0.3289

■ 24.0332, 0.4186,
0.2718

■ 20.4994, 0.4480,
0.2661

■ 17.9855, 0.4795,
0.2644

■ 16.3773, 0.5109,
0.2677

■ 15.5079, 0.5401,
0.2760

Harmonies

Analogous

The Analogous color harmony consists of three colors that are next to each other on the color wheel.



60.0548, 0.3120, 0.3150



60.0548, 0.3217, 0.3211



60.0548, 0.3290, 0.3293

Triad

The Triadic color harmony groups three colors that are evenly spaced from another and form a triangle on the color wheel.



60.0548, 0.3217, 0.3211



60.0548, 0.3226, 0.3460



60.0548, 0.2939, 0.3200

Complementary

The Complementary color scheme is a pair of colors which are on the opposite of each other on the color wheel.



60.0548, 0.3217, 0.3211



66.3976, 0.3045, 0.3370

Split Complementary

Split-complementary colors differ from the complementary color scheme. The scheme consists of three colors, the original color and two neighbors of the complement color.



60.0548, 0.2967, 0.3284



60.0548, 0.3217, 0.3211



60.0548, 0.3132, 0.3436

Square

The Square scheme is like the rectangle color scheme, but the four colors are evenly spaced on the color wheel.



60.0548, 0.3217, 0.3211



60.0548, 0.3295, 0.3437



60.0548, 0.3037, 0.3371



60.0548, 0.2961, 0.3142

Rectangle

The Rectangle color scheme consists of four colors that form a rectangle on the color wheel.



60.0548, 0.3217, 0.3211



60.0548, 0.3315, 0.3349



60.0548, 0.3037, 0.3371



60.0548, 0.2943, 0.3226

Sweetspot

The Sweet Spot groups the original color and five complimentary colors.



60.0574, 0.3217, 0.3211



96.5899, 0.3148, 0.3271



59.5340, 0.3082, 0.3085



20.7099, 0.3147, 0.3272



0.0000, 0.0000, 0.0000



21.4041, 0.3127, 0.3290

Same Dimension

The Same Dimension uses a secret algorithm to generate beautiful new colors.



60.0574, 0.3217, 0.3211



83.8321, 0.3239, 0.3193



60.5562, 0.3267, 0.3311



13.1349, 0.3231, 0.3199



9.3399, 0.5413, 0.2755



0.6217, 0.4975, 0.2514

Inverse Universe

The Inverse Universe completely reimagines the original color for something new.



60.0574, 0.3217, 0.3211



83.8321, 0.3239, 0.3193



65.8336, 0.3000, 0.3269



13.1349, 0.3231, 0.3199



9.3399, 0.5413, 0.2755



0.6217, 0.4975, 0.2514

Previews

White Background



This preview shows how the Yxy color 60.0548, 0.3217, 0.3211 looks on a white background.

Color Contrast Check

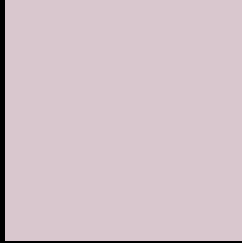
Large Text (above 18pt) WCAG AA × Fail

Any Text WCAG AA × Fail

Large Text (above 18pt) WCAG AAA × Fail

Any Text WCAG AAA × Fail

Black Background



This preview shows how the Yxy color 60.0548, 0.3217, 0.3211 looks on a black background.

Color Contrast Check

Large Text (above 18pt) WCAG AA ✓ Pass

Any Text WCAG AA ✓ Pass

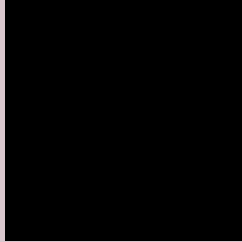
Large Text (above 18pt) WCAG AAA ✓ Pass

Any Text WCAG AAA ✓ Pass

If you want to check with other color combinations, try the [Color Contrast Checker](#).

Yxy 60.0548, 0.3217, 0.3211

Background



This preview shows how black text looks on a background with the Yxy color 60.0548, 0.3217, 0.3211.



This preview shows how white text looks on a background with the Yxy color 60.0548, 0.3217, 0.3211.

Color Blindness Simulation

Color vision deficiency is a very complex topic, and I could not describe the different causes any better than Wikipedia does, so if you want to learn more, you should check out their [article about color blindness](#).

Dichromacy



Original Color

60.0548, 0.3217, 0.3211

Protanopia

60.3877, 0.3115, 0.3232

Deuteranopia

59.9183, 0.3259, 0.3189



Tritanopia

60.0977, 0.3174, 0.3121

Trichromacy



Original Color

60.0548, 0.3217, 0.3211

Protanomaly

60.4477, 0.3153, 0.3232

Deuteranomaly

60.0600, 0.3242, 0.3200

Tritanomaly

59.9467, 0.3196, 0.3155

Monochromacy



Original Color

60.0548, 0.3217, 0.3211

Achromatopsia

61.0496, 0.3127, 0.3290

Achromatomaly

60.6750, 0.3159, 0.3267

CSS Examples

Text

The CSS property to change the color of the text to Yxy 60.0548, 0.3217, 0.3211 is called "color". The color property can be set on classes, ids or directly on the HTML element.

This example shows how text in the color `rgb(217, 199, 206)` looks like.

```
.text, #text, p{  
    color:rgb(217, 199, 206)  
}
```

If you want to add a text shadow in that color use the text-shadow property, you can generate a text shadow directly with our [CSS Text Shadow Generator](#).

Here you see how black text with a 4 pixel rgb(217, 199, 206) colored shadow looks like.

```
.shadow{ text-shadow: 4px 4px 2px rgb(217, 199, 206) }
```

Border

The CSS property to change the border of an element to Yxy 60.0548, 0.3217, 0.3211 is called "border". The border property can be set on classes, ids or directly on the HTML element.

This example shows the color as border, it can be applied via the CSS property "border" or "border-color".

```
.border, #border, table{ border:4px solid rgb(217, 199, 206) }
```

If only the border color should be changed use the property border-color.

```
.border{ border-color:rgb(217, 199, 206) }
```

If you want to add a box shadow in that color use:

Here you see how a box with a 4 pixel rgb(217, 199, 206) colored shadow looks like.

```
.boxshadow{ -moz-box-shadow:4px 4px 4px  
4px rgb(217, 199, 206); -webkit-box-  
shadow:4px 4px 4px 4px rgb(217, 199, 206);  
box-shadow:4px 4px 4px 4px rgb(217, 199,  
206) }
```


Background

The CSS property to change the background color of an element to Yxy 60.0548, 0.3217, 0.3211 is called "background". The background property can be set on classes, ids or directly on the HTML element.

```
.background, #background, body{  
background: rgb(217, 199, 206) }
```

If only the background color should be changed can be used:

```
.background{ background-color: rgb(217,  
199, 206) }
```

This example shows the color as background, it is applied via the CSS property "background".

To optimize and compress your CSS code, you can use our [online CSS compressor and optimizer](#) based on csstidy. If you want to create a linear or radial gradient as background or border, check our [CSS Gradient Generator](#).

Hey! You found this booklet interesting? Support Converting Colors with the new Membership Option!

The pro membership hides all ads, plus gives you double the colors in the color bucket, and more awesome pro features!

[Learn more, Memberships starting at \\$2.50/m!](#)

**Follow me
on Twitter!**

@ConvertingColor