

Converting Colors

$Yxy(60.1033, 0.3342, 0.3322)$

Have a look what the booklet for
Yxy(60.1033, 0.3342, 0.3322)
contains.

Yxy(60.0617, 0.3342, 0.3313)	3
Conversions	4
Details	6
Harmonies	12
Previews	24
Color Blindness Simulation	27
CSS Examples	30

Color

Yxy(60.0617, 0.3342, 0.3313)

Conversions

Conversions Part 1

Format	Color
Hex	DFC6C4
RGB	223, 198, 196
RGB Percent	87%, 78%, 77%
CMY	0.1256, 0.2235, 0.2313
CMYK	0.00, 0.11, 0.12, 0.13
HSL	4°, 30%, 82%
HSV	4°, 12%, 87%
XYZ	60.5874, 60.0617, 60.6418
YIQ	205.2470, 15.5420, 4.6780

Conversions

Conversions Part 2

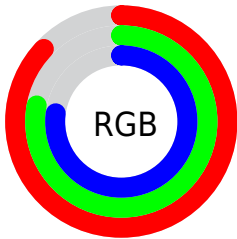
Format	Color
R _Y B	223, 198, 196
Decimal	14665412
CIE Lab	81.87, 8.45, 4.19
CIE LCh	82, 9.435, 26.386
Yxy	60.0617, 0.3342, 0.3313
Android (android.graphics.Color)	4292855492 (0xFFDFC6C4)
YUV	205.2470, -4.5588, 15.5694
Hunter-Lab	77.4995, 3.9234, 7.8564

Details

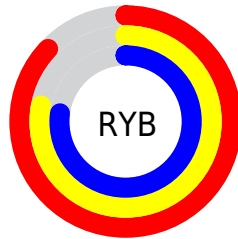
The Yxy color **60.0617, 0.3342, 0.3313** is a light color, and the websafe version is hex **CCCCCC**. A complement of this color would be **68.7807, 0.2942, 0.3267**, and the grayscale version is **61.2392, 0.3127, 0.3290**.

A 20% lighter version of the original color is **99.8718, 0.3139, 0.3309**, and **30.2243, 0.3406, 0.3321** is the 20% darker color. If you saturate the color by 10%, you get **50.3127, 0.3567, 0.3334**, and if you desaturate by 10%, it is **71.2554, 0.3160, 0.3294**.

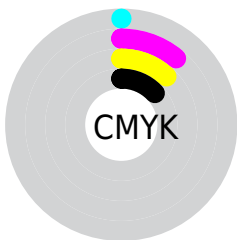
Distribution



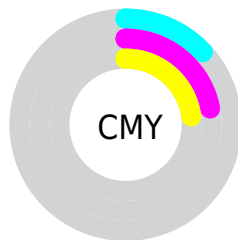
- Red (87%)
- Green (78%)
- Blue (77%)



- Red (87%)
- Yellow (78%)
- Blue (77%)



- Cyan (0%)
- Magenta (11%)
- Yellow (12%)
- Black (13%)





- Cyan (13%)
- Magenta (22%)
- Yellow (23%)

Brightness & Saturation Gradients


These gradients show how the Yxy color 60.0617, 0.3342, 0.3313 changes by changing the brightness by 10 percent. The first figure shows a shift by +10% for each color and the second figure -10%.

Similar to the brightness gradients but the following saturation gradients show a change of the Yxy color 60.0617, 0.3342, 0.3313 by changing the saturation by 10% instead.

 60.0617, 0.3342,
0.3313

 60.0617, 0.3342,
0.3313


424.8252, 0.3239,
0.3303

 43.4684, 0.3367,
0.3315


104.9192, 0.3305,
0.3310

 30.2528, 0.3398,
0.3318


133.9521, 0.3291,
0.3308

 20.0305, 0.3438,
0.3321


167.9003, 0.3279,
0.3307

 12.4172, 0.3492,
0.3325

207.1483, 0.3269,
0.3306

 7.0285, 0.3570,
0.3330

252.0804, 0.3260,
0.3305

 3.4799, 0.3689,
0.3335

303.0809, 0.3252,

 1.3871, 0.3894,

0.3304

360.5344, 0.3245,
0.3304

0.3341

0.2072, 0.6606,
0.3394

0.0000, 0.0000,
0.0000

60.0617, 0.3342,
0.3313

60.0617, 0.3342,
0.3313

50.3127, 0.3567,
0.3334

71.2554, 0.3160,
0.3294

41.9418, 0.3843,
0.3355

83.9408, 0.3014,
0.3276

34.8894, 0.4180,
0.3375

94.4249, 0.2934,
0.3289

29.0881, 0.4577,
0.3392

■ 24.4649, 0.5023,
0.3403

■ 20.9388, 0.5484,
0.3402

■ 18.4190, 0.5902,
0.3387

■ 16.7998, 0.6210,
0.3358

■ 16.0666, 0.6356,
0.3335

Harmonies

Analogous

The Analogous color harmony consists of three colors that are next to each other on the color wheel.



60.0617, 0.3259, 0.3209



60.0617, 0.3342, 0.3313



60.0617, 0.3366, 0.3413

Triad

The Triadic color harmony groups three colors that are evenly spaced from another and form a triangle on the color wheel.



60.0617, 0.3342, 0.3313



60.0617, 0.3109, 0.3461



60.0617, 0.2932, 0.3098

Complementary

The Complementary color scheme is a pair of colors which are on the opposite of each other on the color wheel.



60.0617, 0.3342, 0.3313



68.7807, 0.2942, 0.3267

Split Complementary

Split-complementary colors differ from the complementary color scheme. The scheme consists of three colors, the original color and two neighbors of the complement color.



60.0617, 0.2894, 0.3161



60.0617, 0.3342, 0.3313



60.0617, 0.2995, 0.3372

Square

The Square scheme is like the rectangle color scheme, but the four colors are evenly spaced on the color wheel.



60.0617, 0.3342, 0.3313



60.0617, 0.3230, 0.3502



60.0617, 0.2917, 0.3261



60.0617, 0.3022, 0.3087

Rectangle

The Rectangle color scheme consists of four colors that form a rectangle on the color wheel.



60.0617, 0.3342, 0.3313



60.0617, 0.3345, 0.3465



60.0617, 0.2917, 0.3261



60.0617, 0.2913, 0.3114

Sweetspot

The Sweet Spot groups the original color and five complimentary colors.



60.0644, 0.3342, 0.3313



93.4778, 0.3193, 0.3297



60.4090, 0.3154, 0.3013



19.7534, 0.3206, 0.3299



0.0000, 0.0000, 0.0000



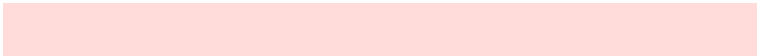
21.4041, 0.3127, 0.3290

Same Dimension

The Same Dimension uses a secret algorithm to generate beautiful new colors.



60.0644, 0.3342, 0.3313



77.2116, 0.3405, 0.3319



66.4109, 0.3323, 0.3461



13.8613, 0.3290, 0.3308



9.5100, 0.6344, 0.3345



0.7166, 0.6189, 0.3468

Inverse Universe

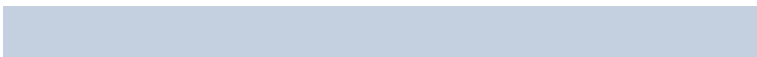
The Inverse Universe completely reimagines the original color for something new.



68.7807, 0.2942, 0.3267



91.6747, 0.2897, 0.3261



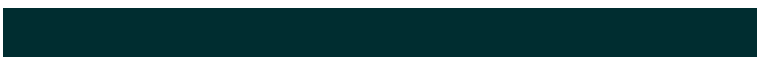
62.0366, 0.2939, 0.3113



15.3910, 0.2982, 0.3272



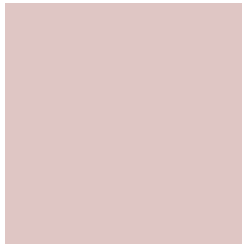
29.3382, 0.2183, 0.3060



2.0857, 0.2194, 0.3098

Previews

White Background



This preview shows how the Yxy color 60.0617, 0.3342, 0.3313 looks on a white background.

Color Contrast Check

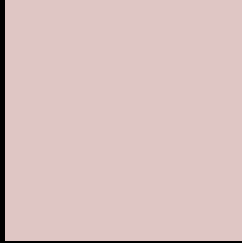
Large Text (above 18pt) WCAG AA × Fail

Any Text WCAG AA × Fail

Large Text (above 18pt) WCAG AAA × Fail

Any Text WCAG AAA × Fail

Black Background



This preview shows how the Yxy color 60.0617, 0.3342, 0.3313 looks on a black background.

Color Contrast Check

Large Text (above 18pt) WCAG AA ✓ Pass

Any Text WCAG AA ✓ Pass

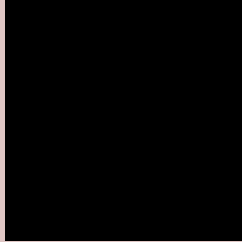
Large Text (above 18pt) WCAG AAA ✓ Pass

Any Text WCAG AAA ✓ Pass

If you want to check with other color combinations, try the [Color Contrast Checker](#).

Yxy 60.0617, 0.3342, 0.3313

Background



This preview shows how black text looks on a background with the Yxy color 60.0617, 0.3342, 0.3313.



This preview shows how white text looks on a background with the Yxy color 60.0617, 0.3342, 0.3313.

Color Blindness Simulation

Color vision deficiency is a very complex topic, and I could not describe the different causes any better than Wikipedia does, so if you want to learn more, you should check out their [article about color blindness](#).

Dichromacy



Original Color

60.0617, 0.3342, 0.3313

Protanopia

60.2453, 0.3195, 0.3337

Deuteranopia

60.0868, 0.3368, 0.3302



Tritanopia

60.1906, 0.3246, 0.3124

Trichromacy



Original Color

60.0617, 0.3342, 0.3313

Protanomaly

59.9966, 0.3243, 0.3325

Deuteranomaly

59.9256, 0.3360, 0.3302

Tritanomaly

60.2360, 0.3275, 0.3190

Monochromacy



Original Color

60.0617, 0.3342, 0.3313

Achromatopsia

61.0496, 0.3127, 0.3290

Achromatomaly

60.5024, 0.3205, 0.3290

CSS Examples

Text

The CSS property to change the color of the text to Yxy 60.0617, 0.3342, 0.3313 is called "color". The color property can be set on classes, ids or directly on the HTML element.

This example shows how text in the color `rgb(223, 198, 196)` looks like.

```
.text, #text, p{  
    color:rgb(223, 198, 196)  
}
```

If you want to add a text shadow in that color use the text-shadow property, you can generate a text shadow directly with our [CSS Text Shadow Generator](#).

Here you see how black text with a 4 pixel rgb(223, 198, 196) colored shadow looks like.

```
.shadow{ text-shadow: 4px 4px 2px rgb(223, 198, 196) }
```

Border

The CSS property to change the border of an element to Yxy 60.0617, 0.3342, 0.3313 is called "border". The border property can be set on classes, ids or directly on the HTML element.

This example shows the color as border, it can be applied via the CSS property "border" or "border-color".

```
.border, #border, table{ border:4px solid rgb(223, 198, 196) }
```

If only the border color should be changed use the property `border-color`.

```
.border{ border-color:rgb(223, 198, 196) }
```

If you want to add a box shadow in that color use:

Here you see how a box with a 4 pixel `rgb(223, 198, 196)` colored shadow looks like.

```
.boxshadow{ -moz-box-shadow:4px 4px 4px  
4px rgb(223, 198, 196); -webkit-box-  
shadow:4px 4px 4px 4px rgb(223, 198, 196);  
box-shadow:4px 4px 4px 4px rgb(223, 198,  
196) }
```


Background

The CSS property to change the background color of an element to Yxy 60.0617, 0.3342, 0.3313 is called "background". The background property can be set on classes, ids or directly on the HTML element.

```
.background, #background, body{  
background: rgb(223, 198, 196) }
```

If only the background color should be changed can be used:

```
.background{ background-color: rgb(223,  
198, 196) }
```

This example shows the color as background, it is applied via the CSS property "background".

To optimize and compress your CSS code, you can use our [online CSS compressor and optimizer](#) based on csstidy. If you want to create a linear or radial gradient as background or border, check our [CSS Gradient Generator](#).

Hey! You found this booklet interesting? Support Converting Colors with the new Membership Option!

The pro membership hides all ads, plus gives you double the colors in the color bucket, and more awesome pro features!

[Learn more, Memberships starting at \\$2.50/m!](#)

**Follow me
on Twitter!**

@ConvertingColor