

Converting Colors

$Y_{xy}(60.1173, 0.3430, 0.3291)$

Have a look what the booklet for
Yxy(60.1173, 0.3430, 0.3291)
contains.

Yxy(60.1261, 0.3429, 0.3291)	3
<i>Conversions</i>	4
<i>Details</i>	6
<i>Harmonies</i>	12
<i>Previews</i>	24
<i>Color Blindness Simulation</i>	27
<i>CSS Examples</i>	30

Color

Yxy(60.1261, 0.3429, 0.3291)

Conversions

Conversions Part 1

Format	Color
Hex	E8C3C3
RGB	232, 195, 195
RGB Percent	91%, 76%, 76%
CMY	0.0901, 0.2353, 0.2353
CMYK	0.00, 0.16, 0.16, 0.09
HSL	0°, 45%, 84%
HSV	0°, 16%, 91%
XYZ	62.6473, 60.1261, 59.9251
YIQ	206.0630, 22.0520, 7.8440

Conversions

Conversions Part 2

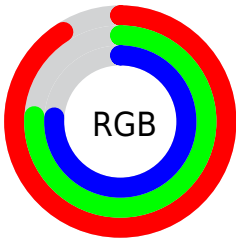
Format	Color
R _Y B	232, 195, 195
Decimal	15254467
CIE Lab	81.91, 13.12, 4.90
CIE LCh	82, 14.011, 20.490
Yxy	60.1261, 0.3429, 0.3291
Android (android.graphics.Color)	4293444547 (0xFFE8C3C3)
YUV	206.0630, -5.4541, 22.7467
Hunter-Lab	77.5410, 8.5178, 8.4583

Details

The Yxy color **60.1261, 0.3429, 0.3291** is a light color, and the websafe version is hex **FFCCCC**. A complement of this color would be **75.1448, 0.2886, 0.3289**, and the grayscale version is **61.7910, 0.3127, 0.3290**.

A 20% lighter version of the original color is **97.9091, 0.3146, 0.3290**, and **30.2029, 0.3513, 0.3291** is the 20% darker color. If you saturate the color by 10%, you get **49.5606, 0.3682, 0.3292**, and if you desaturate by 10%, it is **72.4744, 0.3227, 0.3290**.

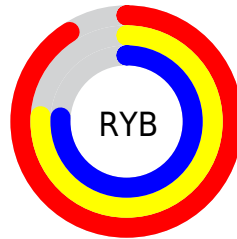
Distribution



Red (91%)

Green (76%)

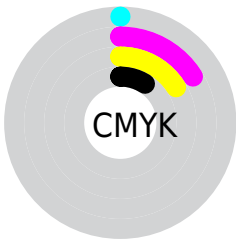
Blue (76%)



Red (91%)

Yellow (76%)

Blue (76%)

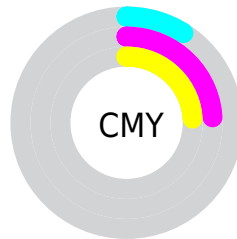


Cyan (0%)

Magenta (16%)

Yellow (16%)

Black (9%)



Cyan (9%)


Magenta (24%)


Yellow (24%)

Brightness & Saturation Gradients


These gradients show how the Yxy color 60.1261, 0.3429, 0.3291 changes by changing the brightness by 10 percent. The first figure shows a shift by +10% for each color and the second figure -10%.


Similar to the brightness gradients but the following saturation gradients show a change of the Yxy color 60.1261, 0.3429, 0.3291 by changing the saturation by 10% instead.


 60.1261, 0.3429,
0.3291

 60.1261, 0.3429,
0.3291


425.0624, 0.3284,
0.3292

 43.5203, 0.3464,
0.3290


 105.0126, 0.3377,
0.3292

 30.2935, 0.3507,
0.3289


134.0620, 0.3358,
0.3292

 20.0615, 0.3564,
0.3288


168.0281, 0.3341,
0.3292

 12.4398, 0.3641,
0.3285

207.2953, 0.3326,
0.3292

 7.0439, 0.3750,
0.3279

252.2479, 0.3314,
0.3292

 3.4896, 0.3916,
0.3268

303.2704, 0.3302,

 1.3924, 0.4203,

0.3292

0.3241

360.7471, 0.3292,
0.3292

0.2111, 0.7117,
0.2883

0.0000, 0.0000,
0.0000

60.1261, 0.3429,
0.3291

60.1261, 0.3429,
0.3291

49.5606, 0.3682,
0.3292

72.4744, 0.3227,
0.3290

40.6879, 0.3995,
0.3293

86.6740, 0.3067,
0.3290

33.4227, 0.4376,
0.3294

95.8990, 0.2988,
0.3290

27.6687, 0.4820,
0.3295

■ 23.3194, 0.5301,
0.3297

■ 20.2548, 0.5764,
0.3298

■ 18.3344, 0.6134,
0.3299

■ 17.3847, 0.6347,
0.3300

■ 17.1607, 0.6401,
0.3300

Harmonies

Analogous

The Analogous color harmony consists of three colors that are next to each other on the color wheel.



60.1261, 0.3291, 0.3144



60.1261, 0.3429, 0.3291



60.1261, 0.3484, 0.3443

Triad

The Triadic color harmony groups three colors that are evenly spaced from another and form a triangle on the color wheel.



60.1261, 0.3429, 0.3291



60.1261, 0.3135, 0.3566



60.1261, 0.2821, 0.3018

Complementary

The Complementary color scheme is a pair of colors which are on the opposite of each other on the color wheel.



60.1261, 0.3429, 0.3291



75.1448, 0.2886, 0.3289

Split Complementary

Split-complementary colors differ from the complementary color scheme. The scheme consists of three colors, the original color and two neighbors of the complement color.



60.1261, 0.2783, 0.3122



60.1261, 0.3429, 0.3291



60.1261, 0.2961, 0.3443

Square

The Square scheme is like the rectangle color scheme, but the four colors are evenly spaced on the color wheel.



60.1261, 0.3429, 0.3291



60.1261, 0.3311, 0.3608



60.1261, 0.2834, 0.3278



60.1261, 0.2940, 0.2988

Rectangle

The Rectangle color scheme consists of four colors that form a rectangle on the color wheel.



60.1261, 0.3429, 0.3291



60.1261, 0.3465, 0.3527



60.1261, 0.2834, 0.3278



60.1261, 0.2799, 0.3045

Sweetspot

The Sweet Spot groups the original color and five complimentary colors.



60.1288, 0.3429, 0.3291



91.3416, 0.3211, 0.3290



62.0109, 0.3146, 0.2896



19.3004, 0.3223, 0.3290



0.0000, 0.0000, 0.0000



21.4041, 0.3127, 0.3290

Same Dimension

The Same Dimension uses a secret algorithm to generate beautiful new colors.



60.1288, 0.3429, 0.3291



70.1588, 0.3502, 0.3291



68.9408, 0.3397, 0.3493



14.3688, 0.3293, 0.3291



9.5255, 0.6400, 0.3300



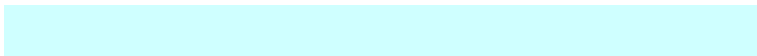
0.7042, 0.6400, 0.3300

Inverse Universe

The Inverse Universe completely reimagines the original color for something new.



75.1448, 0.2886, 0.3289



91.9302, 0.2841, 0.3289



65.2699, 0.2877, 0.3079



16.3356, 0.2982, 0.3290



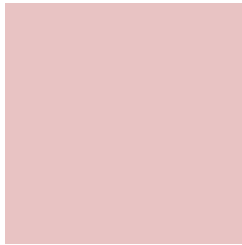
35.2506, 0.2246, 0.3286



2.6052, 0.2246, 0.3287

Previews

White Background



This preview shows how the Yxy color 60.1261, 0.3429, 0.3291 looks on a white background.

Color Contrast Check

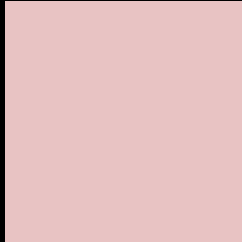
Large Text (above 18pt) WCAG AA × Fail

Any Text WCAG AA × Fail

Large Text (above 18pt) WCAG AAA × Fail

Any Text WCAG AAA × Fail

Black Background



This preview shows how the Yxy color 60.1261, 0.3429, 0.3291 looks on a black background.

Color Contrast Check

Large Text (above 18pt) WCAG AA ✓ Pass

Any Text WCAG AA ✓ Pass

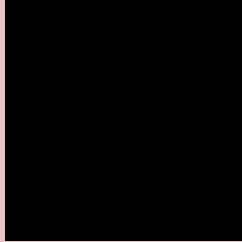
Large Text (above 18pt) WCAG AAA ✓ Pass

Any Text WCAG AAA ✓ Pass

If you want to check with other color combinations, try the [Color Contrast Checker](#).

Yxy 60.1261, 0.3429, 0.3291

Background



This preview shows how black text looks on a background with the Yxy color 60.1261, 0.3429, 0.3291.



This preview shows how white text looks on a background with the Yxy color 60.1261, 0.3429, 0.3291.

Color Blindness Simulation

Color vision deficiency is a very complex topic, and I could not describe the different causes any better than Wikipedia does, so if you want to learn more, you should check out their [article about color blindness](#).

Dichromacy



Original Color

60.1261, 0.3429, 0.3291

Protanopia

60.2453, 0.3195, 0.3337

Deuteranopia

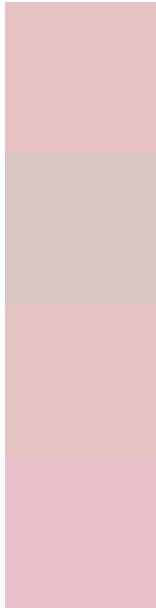
60.2035, 0.3384, 0.3313



Tritanopia

60.1864, 0.3345, 0.3127

Trichromacy



Original Color

60.1261, 0.3429, 0.3291

Protanomaly

60.1375, 0.3276, 0.3313

Deuteranomaly

60.0780, 0.3402, 0.3302

Tritanomaly

60.2190, 0.3375, 0.3192

Monochromacy



Original Color

60.1261, 0.3429, 0.3291

Achromatopsia

61.7207, 0.3127, 0.3290

Achromatomaly

60.9524, 0.3228, 0.3290

CSS Examples

Text

The CSS property to change the color of the text to Yxy 60.1261, 0.3429, 0.3291 is called "color". The color property can be set on classes, ids or directly on the HTML element.

This example shows how text in the color `rgb(232, 195, 195)` looks like.

```
.text, #text, p{  
    color:rgb(232, 195, 195)  
}
```

If you want to add a text shadow in that color use the text-shadow property, you can generate a text shadow directly with our [CSS Text Shadow Generator](#).

Here you see how black text with a 4 pixel rgb(232, 195, 195) colored shadow looks like.

```
.shadow{ text-shadow: 4px 4px 2px rgb(232, 195, 195) }
```

Border

The CSS property to change the border of an element to Yxy 60.1261, 0.3429, 0.3291 is called "border". The border property can be set on classes, ids or directly on the HTML element.

This example shows the color as border, it can be applied via the CSS property "border" or "border-color".

```
.border, #border, table{ border:4px solid rgb(232, 195, 195) }
```

If only the border color should be changed use the property `border-color`.

```
.border{ border-color:rgb(232, 195, 195) }
```

If you want to add a box shadow in that color use:

Here you see how a box with a 4 pixel `rgb(232, 195, 195)` colored shadow looks like.

```
.boxshadow{ -moz-box-shadow:4px 4px 4px  
4px rgb(232, 195, 195); -webkit-box-  
shadow:4px 4px 4px 4px rgb(232, 195, 195);  
box-shadow:4px 4px 4px 4px rgb(232, 195,  
195) }
```


Background

The CSS property to change the background color of an element to Yxy 60.1261, 0.3429, 0.3291 is called "background". The background property can be set on classes, ids or directly on the HTML element.

```
.background, #background, body{  
background: rgb(232, 195, 195) }
```

If only the background color should be changed can be used:

```
.background{ background-color: rgb(232,  
195, 195) }
```

This example shows the color as background, it is applied via the CSS property "background".

To optimize and compress your CSS code, you can use our [online CSS compressor and optimizer](#) based on csstidy. If you want to create a linear or radial gradient as background or border, check our [CSS Gradient Generator](#).

Hey! You found this booklet interesting? Support Converting Colors with the new Membership Option!

The pro membership hides all ads, plus gives you double the colors in the color bucket, and more awesome pro features!

[Learn more, Memberships starting at \\$2.50/m!](#)

**Follow me
on Twitter!**

@ConvertingColor